

Attachment A: Proposed parking restrictions and locations

Attachment A – Parking restrictions for the Infrastructure Committee for meeting May 16 2024

Note:

- Provide a separate line for each road
- Map/ Plan – with clear mark-up of the proposed restriction location for all traffic and parking restrictions listed below.– cross referenced to the schedule information

Map Ref.	Reference to relevant section in QLDC Bylaw 2018 or Land Transport Road User Rule 2004.	RAMM Road ID	Road Name	Description of issue (Include Impacts on existing restrictions)	Restriction Type Other please state	Action Required	Hours of operation	Use mobile roads or RAMM to get OPR for road direction / RPs.				Physical works completed [Y/N/NA]
								Side of road [dropdown]+ Left Right Both Middle	Start RP	End RP	Total length Or Stopping Place ID	N
1	Bylaw 16	5592	516 Frankton-Ladies Mile/NZSH6 / Howards Drive (Ladies Mile Carpark)	Freehold car park - people parking their vehicles for extended periods	P10 hour parking restriction at all times.	Install signage for P10 hour parking restriction at all times.	At all times	Whole	ORP	50RP	ID37	N
1a	Bylaw 21	2108	516 Frankton-Ladies Mile/NZSH6 / Howards Drive (Ladies Mile Carpark)	Freehold land. Parking on grass	No parking off roadway.	Install signage for no parking at all times (for area in blue square in map 1 below).	At all times	Whole	136RP	153RP	17m	N
2	Bylaw 16	2921	McDowell Drive , Lake Hayes (Private) (McDowell Drive Carpark)	QLDC have an easement over this car park - people parking their vehicles for extended periods and in front of farmers' gate	P4 hour parking restriction at all times.	Install signage for P4 hour parking restriction at all times.	At all times	Whole	ORP	49RP	ID124	N

Attachment A – Parking restrictions for the Infrastructure Committee for meeting May 16 2024

Map Ref.	Reference to relevant section in QLDC Bylaw 2018 or Land Transport Road User Rule 2004.	RAMM Road ID	Road Name	Description of issue (Include Impacts on existing restrictions)	Restriction Type Other please state	Action Required	Hours of operation	Use mobile roads or RAMM to get OPR for road direction / RPs.				Physical works completed [Y/N/NA]
								Side of road [dropdown]+ Left Right Both Middle	Start RP	End RP	Total length Or Stopping Place ID	N
3	Bylaw 16	2974	Bayview Reserve, Kelvin Peninsula	Car park in Recreation Reserve - people parking their vehicles for extended periods	P10 hour parking restriction at all times.	Install signage for P10 hour parking restriction at all times.	At all times	Whole	ORP	37RP	ID165	N
4	Bylaw 16	4713	Gray Street Car park Frankton	Freehold car park - people parking their vehicles for extended periods	P10 hour parking restriction at all times.	Install signage for P10 hour parking restriction at all times.	At all times	Whole	ORP	60RP	ID1	N
5	Bylaw 16	2381	One Mile Reserve Fernhill Road Reserve	Car park in Recreation Reserve – people parking their vehicles for extended periods	P6 hour parking restriction at all times.	Install signage for P6 hour parking restriction at all times.	At all times	Whole	9PR	144RP	ID136	N
6	Bylaw 16	5593	One Mile Reserve top car park, off Fernhill Road Reserve	Car park in Recreation Reserve – people parking their vehicles for extended periods	P4 hour parking restriction at all times.	Install signage for P4 hour parking restriction at all times.	At all times	Whole	ORP	43RP	ID251	N
7	Bylaw 21	230	Anderson Park, corner of Centennial Ave and Devon St (opposite Jack Reid	Reserve – Anderson Park	No parking off a roadway.	Install signage for no parking at all times.	At all times	Whole	63RP	204RP	141RP	N

Attachment A – Parking restrictions for the Infrastructure Committee for meeting May 16 2024

Map Ref.	Reference to relevant section in QLDC Bylaw 2018 or Land Transport Road User Rule 2004.	RAMM Road ID	Road Name	Description of issue (Include Impacts on existing restrictions)	Restriction Type	Action Required	Hours of operation	Use mobile roads or RAMM to get OPR for road direction / RPs.				Physical works completed [Y/N/NA]
								Side of road [dropdown]+ Left Right Both Middle	Start RP	End RP	Total length Or Stopping Place ID	N
			Park), Arrowtown									
8	Bylaw 16	5594	Shotover Country Sportsfield, Headley Drive	Car park in Recreation Reserve – people parking their vehicles for extended periods	P10 hour parking restriction at all times.	Install signage for P10 hour parking restriction at all times.	At all times	Whole	0 RP	50RP	ID252	N
9	Bylaw 16	5595	35 Robertson Street , Frankton	Car park in Recreation Reserve – people parking their vehicles for extended periods	P10 hour parking restriction at all times.	Install signage for P10 hour parking restriction at all times.	At all times	Whole	0 RP	91RP	ID253	N
10	Bylaw 16	341	Sunshine Bay Boat Ramp	Car park in Recreation Reserve, boat launch and trailer only	Boat Launch and trailer parking at all times.	Enforce existing signage. Boat Launch & Trailer Parking Only (for area in orange square in map 10 below).	At all times	Whole	65RP	155RP	ID140	Y
10a	Bylaw 15	341	Sunshine Bay Boat Ramp	Vehicles parking in turning bay	No parking at all times.	Enforce existing signage. No Parking – Turning Bay Only (for area in blue square in map 10 below).	At all times	Whole			ID140	Y

1. 516 Ladies Mile / Howards Drive and 1A Howards Drive property



2. McDowell Drive, Lake Hayes Estate



3. Bay View Marina, Kelvin Peninsula



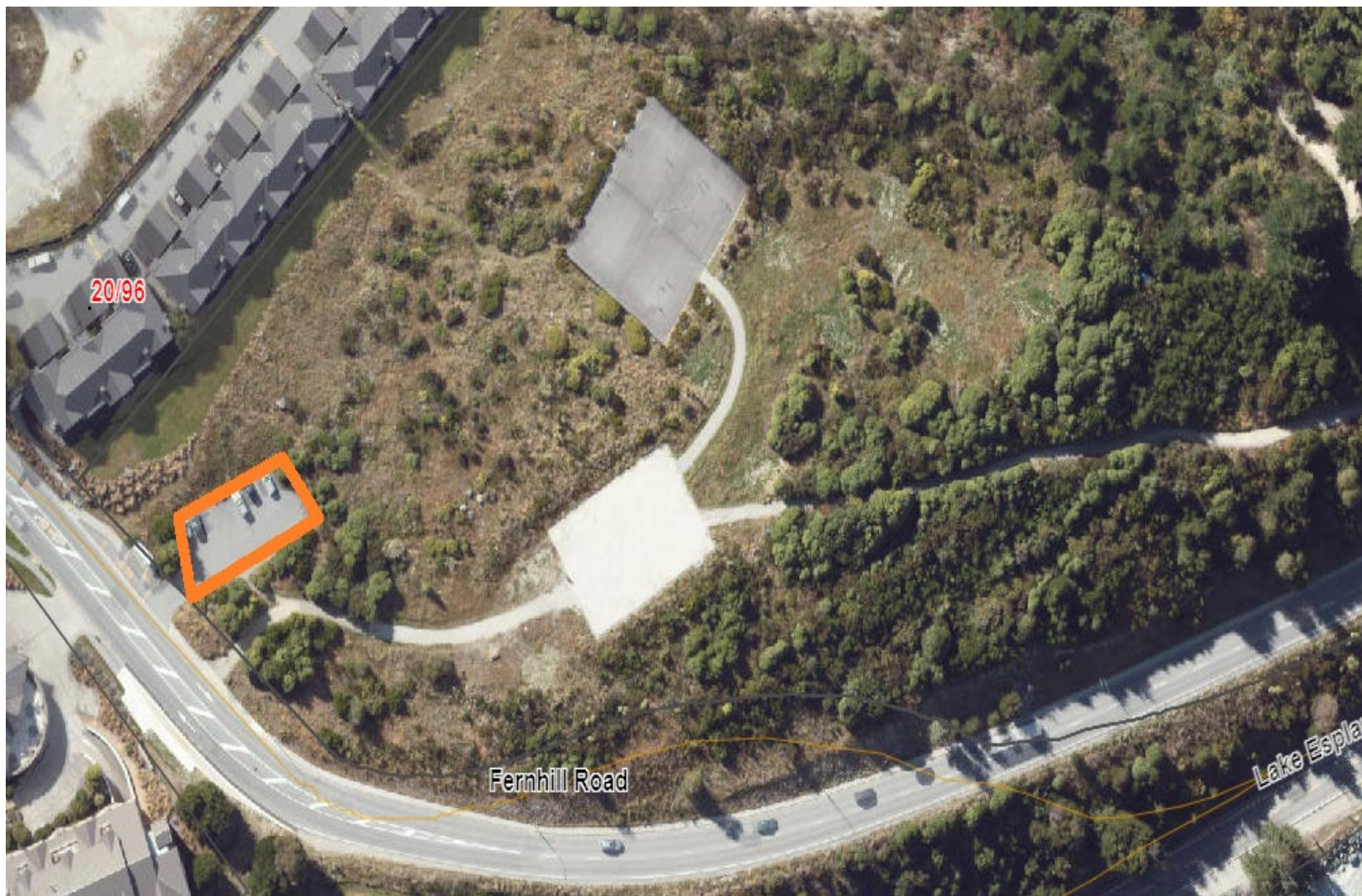
4. Gray Street, Frankton



5. One Mile Reserve, off Fernhill roundabout



6. One Mile Reserve, off Fernhill Road



7. Anderson Park, Arrowtown



8. Headley Drive, Shotover Country Sportsfield



9. 35 Robertson Street, Frankton



10.Sunshine Bay Boat Ramp & 10A No parking

