

## Item 2: Glenorchy Airstrip Reserve Management Plan (RMP) Review update

**SESSION TYPE:** Workshop

### **PURPOSE/DESIRED OUTCOME:**

---

Purpose:

1. Ensure the Community & Services Committee (the Committee) are informed of review process to date
2. Present summary of early feedback themes to RMP
3. Confirm the direction of the Vision and Objectives Themes for the draft Glenorchy Airstrip draft RMP.

Provide the Committee with an update on the review process to date, including early feedback following notification of intent to review RMP, and engagement with the Glenorchy Airstrip Consultative Governance Committee.

Confirm direction from the Committee on the RMP Vision and Objective themes (see attached presentation)

### **DATE/TIME:**

---

Thursday, 08 August 2024 at 11.30am

### **TIME BREAKDOWN:**

---

Presentation: 20 minutes

Workshop/Discussion: 10 minutes

---

**Prepared by:**



**Name:** Jeannie Galavazi  
**Title:** Principal Parks Planner  
**25 July 2024**

**Reviewed and Authorised by:**



**Name:** Kenneth Bailey  
**Title:** GM Community Services  
**30 July 2024**

### **ATTACHMENTS:**

---

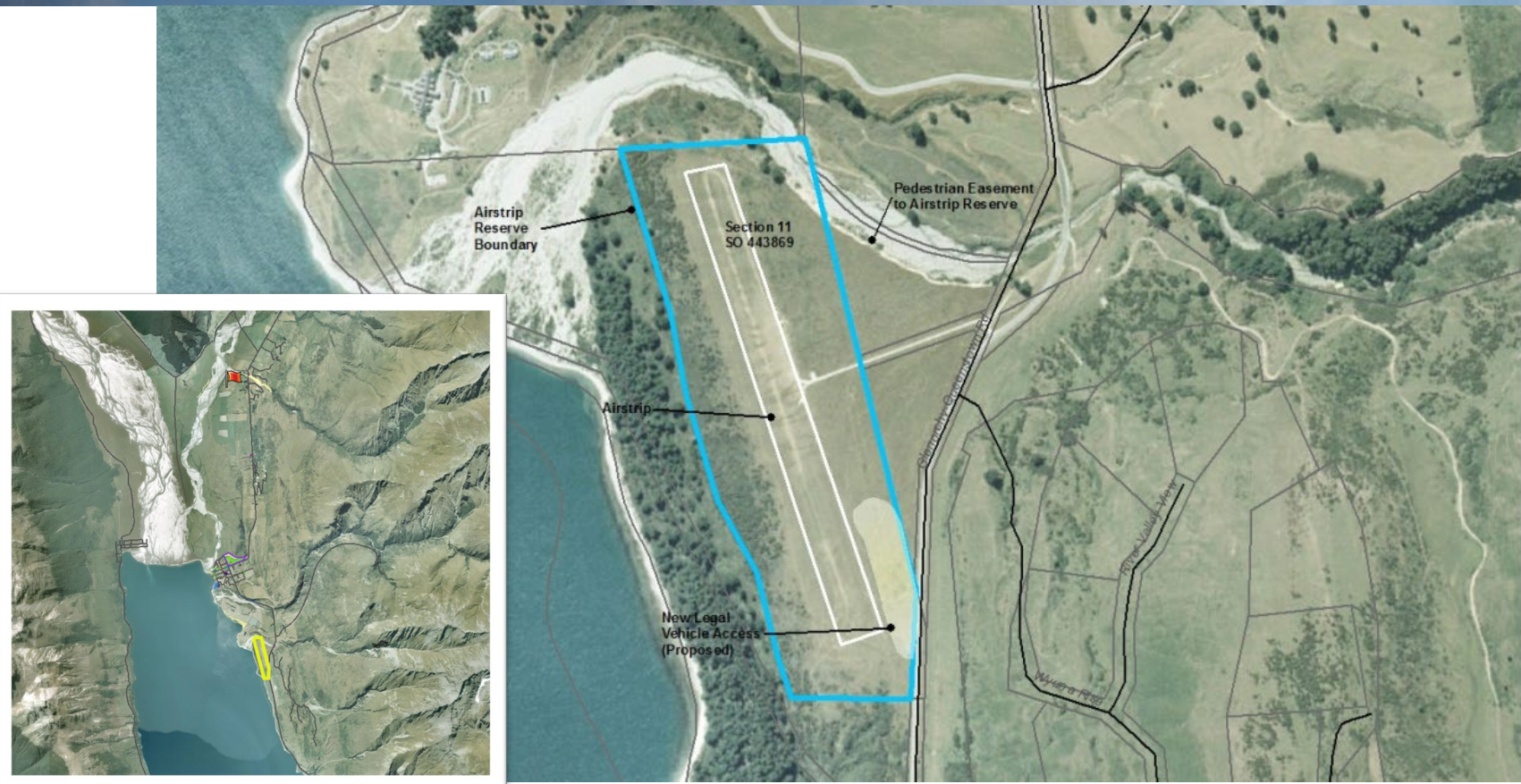
A	Presentation - Draft Glenorchy Airstrip Reserve Management Plan Vision and Objective Themes
---	---

# Glenorchy Airstrip 2024

## Community Service Workshop – 8 August 2024

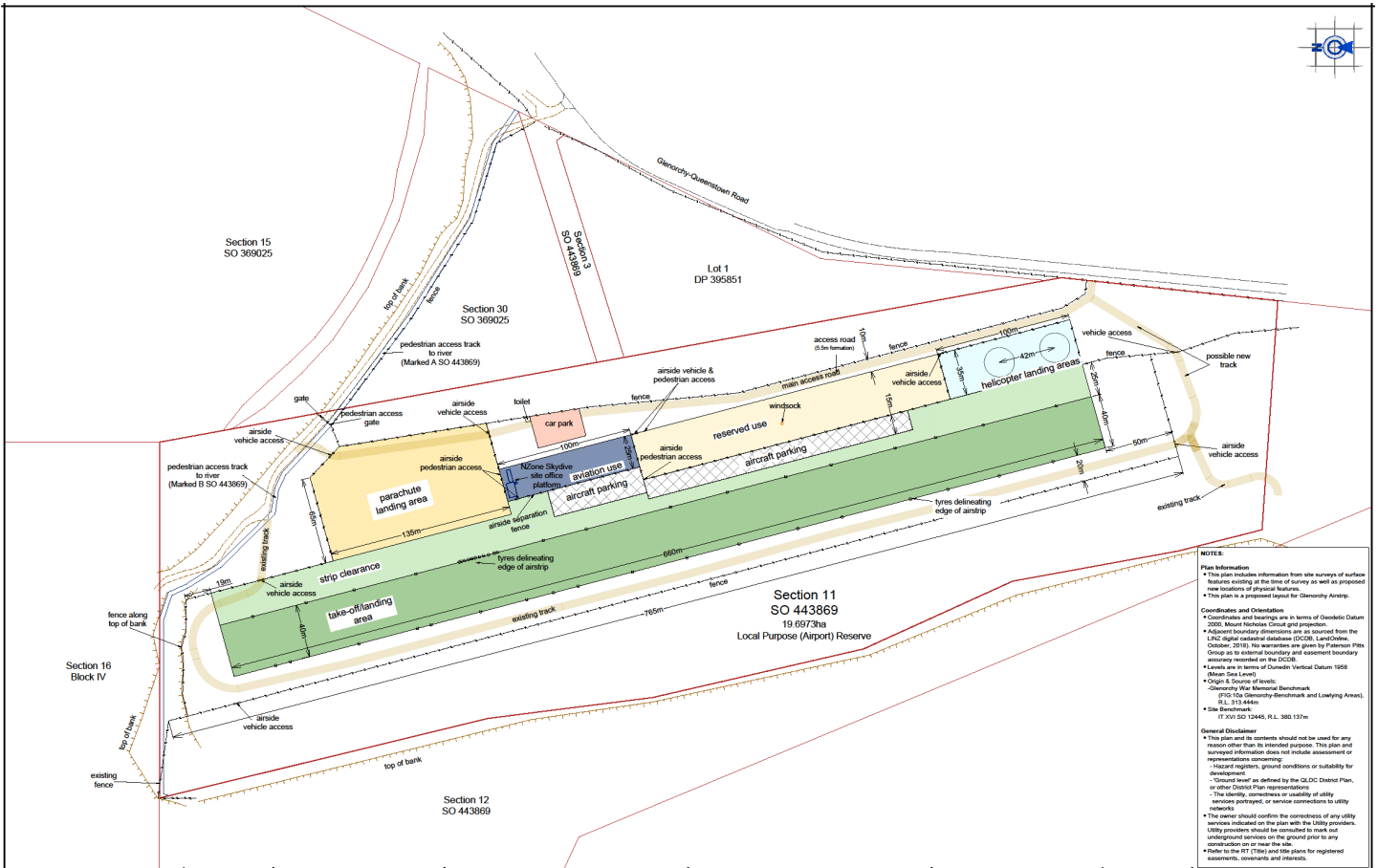
- Update on Reserve Management Plan review
- Direction on Vision and Objective themes

# Glenorchy Airstrip - location



# Site Plan

## ASTRAL AVIATION LTD



**NOTES**

**Plan Information**

- This plan illustrates information from site surveys of surface features existing at the time of survey as well as proposed new locations of physical features.
- This plan is a proposed layout for Glenorchy Airstrip.

**Coordinates and Orientation**

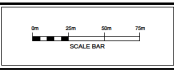
- Coordinates and bearings are in terms of Geospatial Datum 2000, Mount Nicholson Grid projection.
- Adjacent boundary dimensions are as reported from the LINZ digital cadastral database (DCDB, LandOnline, October 2018). No warranties are given by Paterson Pitts Group as to external boundary and easement boundary accuracy recorded on the DCDB.
- Levels are in terms of Dunedin Vertical Datum 1958 (Mean Sea Level).
- Origin: Datum of level:
  - Glenorchy War Memorial Benchmark
  - 970170, Glenorchy Benchmark and Looking Area, R.L. 313.444m
- Site Benchmark:
  - IT XVI SO 12445, R.L. 380.137m

**General Disclaimer**

- This plan and its contents should not be used for any reason other than its intended purpose. This plan and surveyed information does not include assessment or representations concerning:
  - hazardous regions, ground conditions or suitability for development;
  - "Ground level" as defined by the GLDC District Plan, or other District Plan representations;
  - The identity, correctness or usability of utility services portrayed, or service connections to utility networks;
- The owner should confirm the correctness of any utility services indicated on the plan with the utility providers. Utility providers should be consulted to track and underground services on the ground prior to any construction on or near the site.
- Refer to the RT (Title) and title plans for registered easements, covenants and interests.

**PATERSONPITTS GROUP**  
 Surveying • Planning • Engineering  
 Your Local Professionals  
 www.ppgroup.co.nz  
 03 333 9999

QUEENSTOWN, TERACE JARDIN, 1052 FRASER ROAD, PO BOX 2845, QUEENSTOWN 9340  
 T 03 441 4715  
 E queen@ppg.co.nz



for Queenstown Lakes District Council  
**Glenorchy Airstrip Reserve**  
 Section 11 SO 443869

Glenorchy Airstrip  
**Proposed Layout Plan**

NO.	REVISION	DATE
1	Issue for approval	15/08/2020
2	Issue for approval	15/08/2020
3	Issue for approval	15/08/2020

Project: 1:250 of A1  
 Date: 15/08/2020  
 Scale: 1:250 of A1  
 Drawing No: 02/27-14  
 Sheet No: 5  
 Date: 15/08/2020

**DON'T SCALE**





# Update

- Environment Court Decision on Designation #239 - new designation conditions
- Reserve Management Plan review
- Commercial Operators
- Glenorchy Airstrip Consultative Governance Committee

# Designation #239 Conditions

- Growth limited to Noise Contour based on 2019 flight numbers
- Noise Monitoring required once 80% reached
- Noise Management Plan
- Glenorchy Airstrip Consultative Governance Committee
- Decision reflects RMP 2016 objectives

# RMP 2016

- No longer fit for purpose
- Does not allow hangar(s)
- Assumptions about use (no monitoring)
- 80% implemented
- Notice of Intent to review in 2019
- Needs to be updated prior to designation being amended in future (if desired)

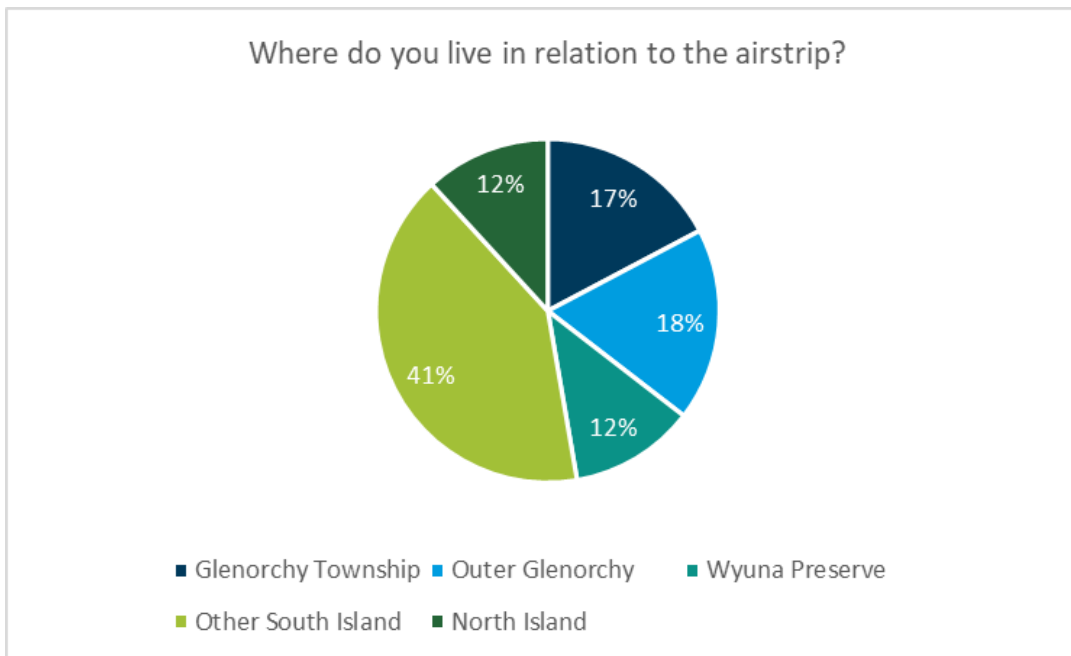
# RMP 2016 key policies

- For any new development encourage consolidation of replacement structures in one area with buildings of similar size and scale to the combined footprint area of those existing at the time of adoption of this plan.
- Facilitate existing emergency community, recreational and low intensity commercial tourism aviation as the principle purpose of the Reserve.
- Aviation activities are managed in a way that provides for the airstrip to be sustained into the future.
- The nature, scale and intensity of the use of the airstrip remain generally unchanged from the level that exists from the date of adoption of plan.



# Feedback summary

- Comprehensive survey questions
- 101 responses





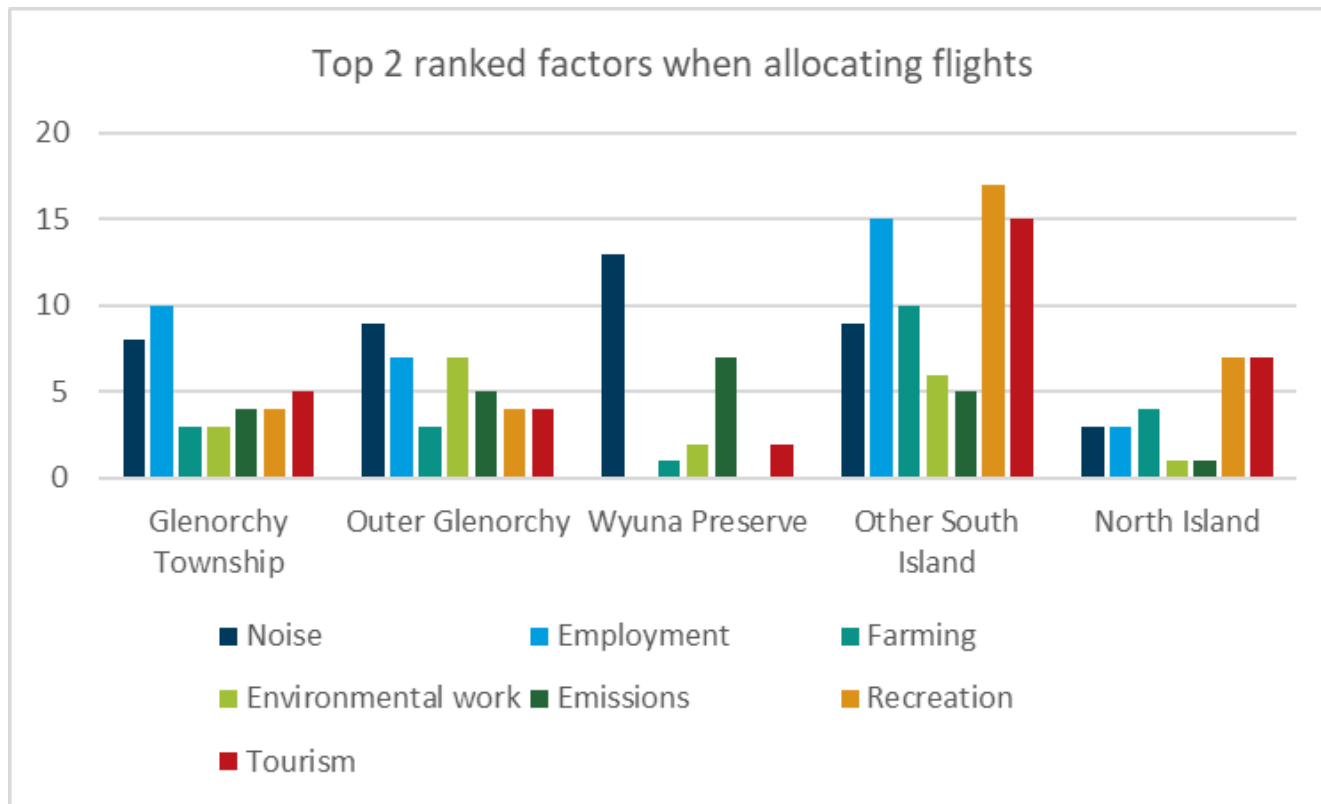
# Draft Vision

*A well-managed grass airstrip that meets the aviation needs of the Glenorchy community, and provides for the airstrip's important contribution to farming, emergency response, employment and conservation in the area, while operating within agreed limits, and allowing for innovation to reduce noise and carbon emissions of users.*

# Objective Themes

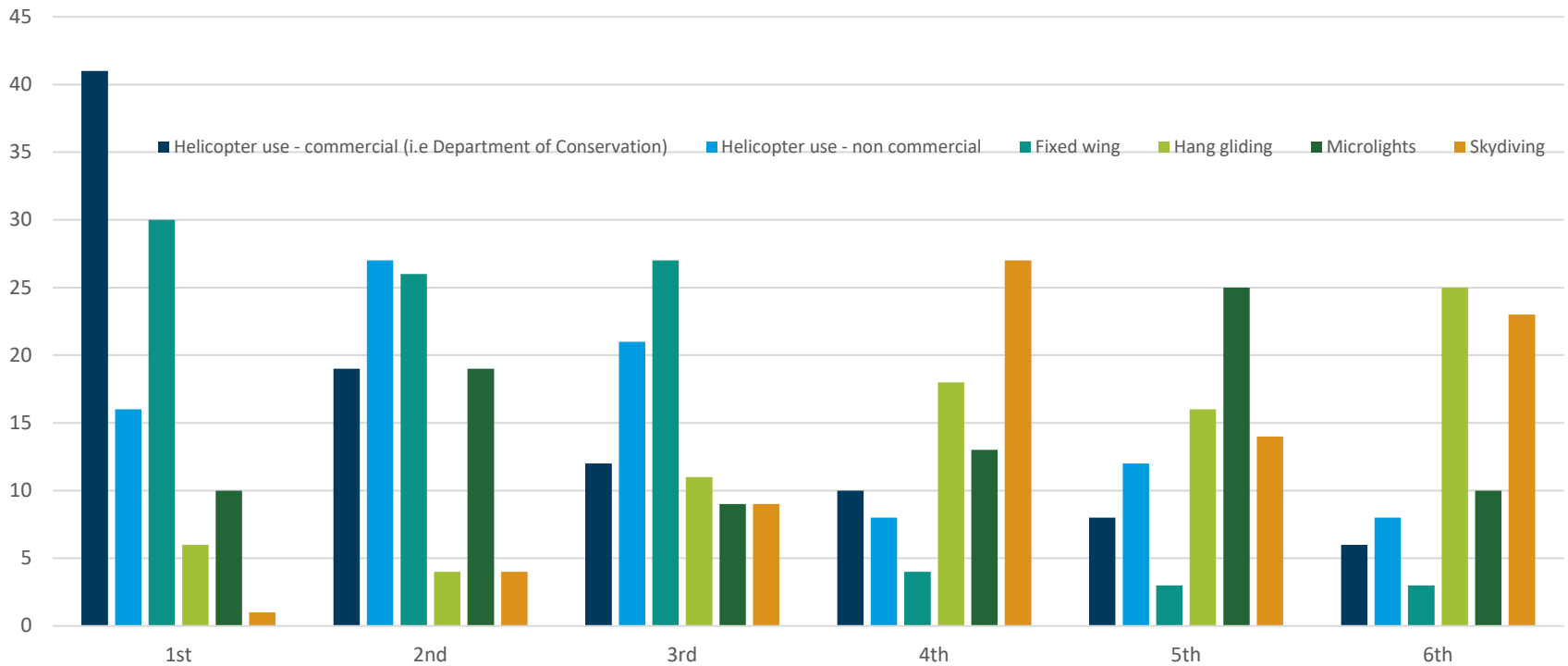
- Purpose of airstrip
- Types of aviation
  - Commercial Operators
    - Fixed Wing
    - Helicopter
  - Recreation
- Future Development
- Flight numbers
- Climate Mitigation

# Purpose of Airstrip



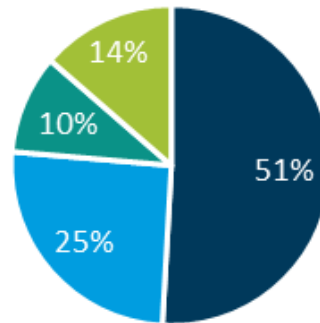
# Types of Aviation

What type of operations do you support?



# Flight Numbers

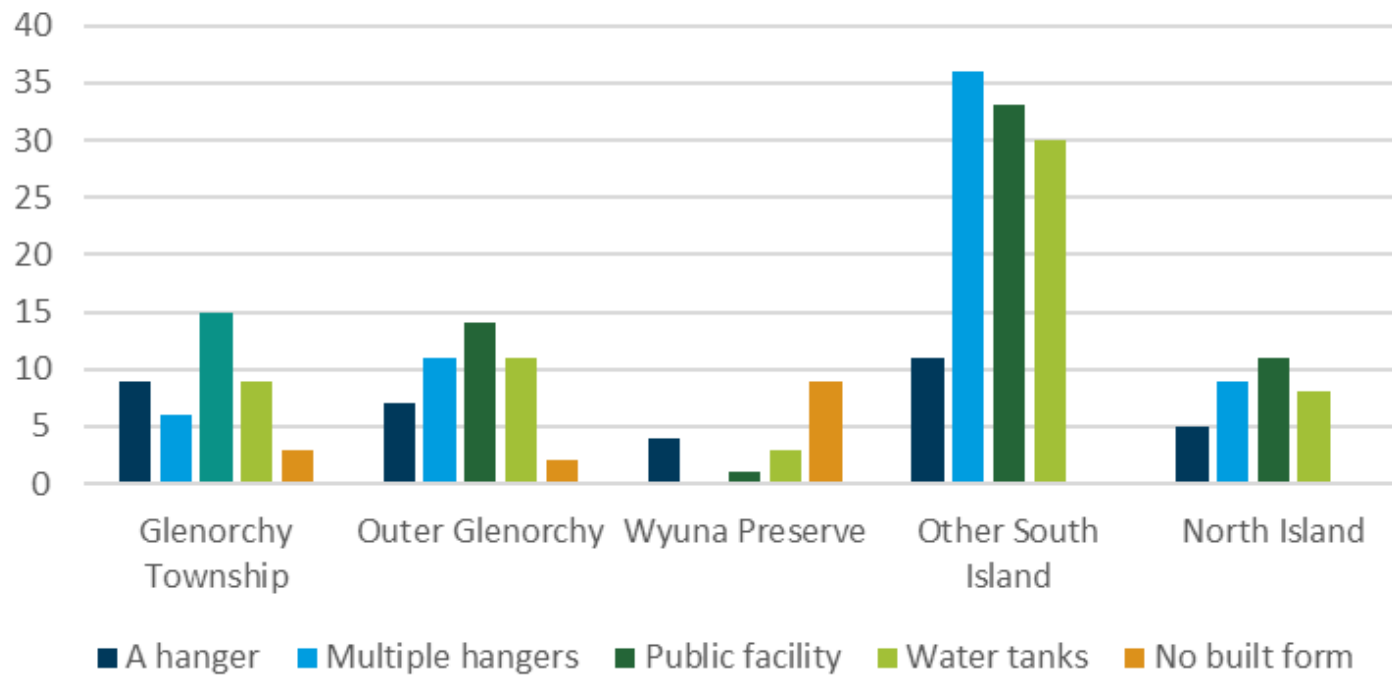
What should happen when the flight limit set by the District Plan Designation is reached?



- QLDC should apply to have the flight limits in the Designation increased
- QLDC should continue to operate the airstrip at the Designation Limits
- QLDC should decrease the numbers of flights authorised at the airstrip
- Other

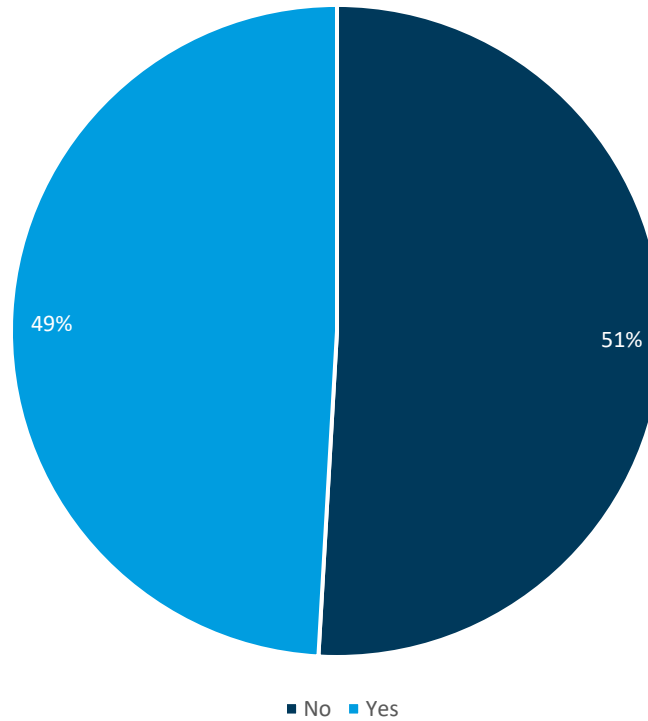
# Future Development

What level of built form (footprint or numbers of buildings) is appropriate for this site?



# Climate Mitigation

Should preferential flight allocation be given to operators who are actively trying to reduce emissions and address climate change concerns (i.e. by offsetting, investing in new technologies)?







# Direction for RMP

- Remain within Designation limits
- Some limited development
- Support local employment and activities

# Next Steps

- Report back to Glenorchy Airstrip Consultative Governance Committee
- Complete drafting of RMP
- Report back to CSC with final draft for approval for public notification.