

DRAFT WASTE MANAGEMENT AND MINIMISATION PLAN 2025-2031

STATEMENT OF PROPOSAL

30 MAY 2025

Look inside to find out about a
proposed pathway to transition
towards zero waste, and a
circular economy.

HAVE YOUR SAY AT
 [LETSTALK.QLDC.GOV.T.NZ](https://letstalk.qldc.govt.nz)
BY 30 JUNE 2025

QUEENSTOWN LAKES: TOGETHER TOWARDS ZERO WASTE AND A CIRCULAR ECONOMY



OUR COLLECTIVE
IMPACT

FOREWORD

Imagine if we could shift our district's waste story from 'production, consumption and disposal' to one where we keep our resources in use and add value for our people and environment.

Waste is everyone's responsibility and each of us can have an impact on the amount of waste we generate and where it ends up. In 2024 we sent on average 960 tonnes of waste to Victoria Flats landfill every week. Most of this could be avoided altogether by changing our behaviours, or managed better with the right services, facilities, and education.

Changing the story of how our district's waste is minimised or managed relies on working together on innovative but achievable solutions. This is where the Waste Management and Minimisation Plan (WMMP) comes in.

ALTHOUGH LEGISLATION REQUIRES COUNCIL
TO WRITE THE WMMP, THE PLAN WILL ONLY BE
SUCCESSFUL IF EVERYONE IN OUR COMMUNITY
WORKS TOGETHER TO MAKE IT HAPPEN

Aotearoa New Zealand has historically taken a very linear approach to managing waste. And despite real improvements in education, recovery and recycling systems, we still consume a lot and send most of it to landfill. Globally, there's a shift towards a different approach featuring more circular management practices known as 'the Circular Economy'. This approach is reflected in our WMMP.

This plan builds on the progress already made through initiatives such as the Zero Waste District Programme and Council's improved kerbside recycling service. It also reflects recent conversations with many people and groups in the community about what's important for success when working together to change the district's waste story.

Now we invite everyone to take a look at the draft WMMP and let us know whether you think these are the right actions to take, together.

ABOUT THIS DOCUMENT

This is a statement of proposal¹ to support public consultation on the Draft WMMP 2025-2031. It provides:

BACKGROUND
INFORMATION

A SUMMARY
OF WHAT WE'RE
PROPOSING AS PART
OF THE NEW WMMP
AND LINKS TO THE
FULL DOCUMENT

WHY WE ARE
PROPOSING A NEW
WASTE MANAGEMENT
AND MINIMISATION
PLAN

INFORMATION
ABOUT HOW TO
PARTICIPATE IN THE
CONSULTATION
PROCESS

¹ This statement of proposal has been prepared to support the Special Consultative Procedure in accordance with section 83 of the Local Government Act 2002 and sections 42 to 51 of the Waste Minimisation Act 2008.

WHY DO WE NEED A NEW WMMP

The Waste Minimisation Act 2008 requires all territorial authorities to adopt a WMMP. It also requires that existing WMMPs are reviewed at least every six years.

Our current WMMP was adopted in 2018 and has been reviewed as part of the Otago Region Waste Assessment 2023.

Completing this assessment is an important part of the process and fulfils the requirements of section 51 of the Waste Minimisation Act. It covered the whole Otago region, examining the current situation, the changing legislative environment, and what the future demand for waste will look like. It was developed by collating data from councils, community groups, the commercial sector, and in consultation with iwi and the Medical Officer of Health.

In October 2023, Queenstown Lakes District Councillors received the waste assessment and agreed to proceed with developing a new WMMP for the district.

There were several reasons for this, including:

- > Significant changes in strategic direction at a national level
- > Government decisions relating to kerbside standardisation
- > The implications of Government waste work programmes generally
- > The requirements of the Emissions Reduction Plan
- > The requirement to spend waste disposal levy funds in accordance with the Waste Management and Minimisation Plan
- > The significant progress made in completing or otherwise addressing the actions included in the current Waste Management and Minimisation Plan

HOW WE'VE DEVELOPED THE WMMP

There's been lots happening since the Council decision to proceed in October 2023. Early stakeholder and community engagement happened in September 2024. We held three in-person sessions and an online workshop, giving us a detailed understanding of what issues are important to the community and what direction the WMMP should take. Our Let's Talk page has more detail on this process and what feedback we received: letstalk.qldc.govt.nz/wmmp

Then in October 2024 we shared our progress with the Councillors, presenting findings from our early engagement and updating on the overall strategic direction for the WMMP.

Since then, we've been developing a draft WMMP, taking care to reflect the outcomes from the community engagement, feedback from elected members and input from other parts of the organisation. We've also spent time ensuring alignment with government strategy² and other Council strategies and plans, including the Long Term Plan 2024-2034³, the Climate and Biodiversity Plan⁴, and the Strategic Framework⁵.

² <https://environment.govt.nz/what-government-is-doing/areas-of-work/waste/waste-strategy/>

³ <https://www.qldc.govt.nz/your-council/council-documents/long-term-plan-ltp/>

⁴ <https://climateaction.qldc.govt.nz/>

⁵ <https://www.qldc.govt.nz/your-council/our-strategic-framework/>

WHAT ARE WE TRYING TO ACHIEVE

Our vision is to move together towards zero waste and a circular economy.

This means a focus on collaboration and harnessing the power of partnerships across the community.

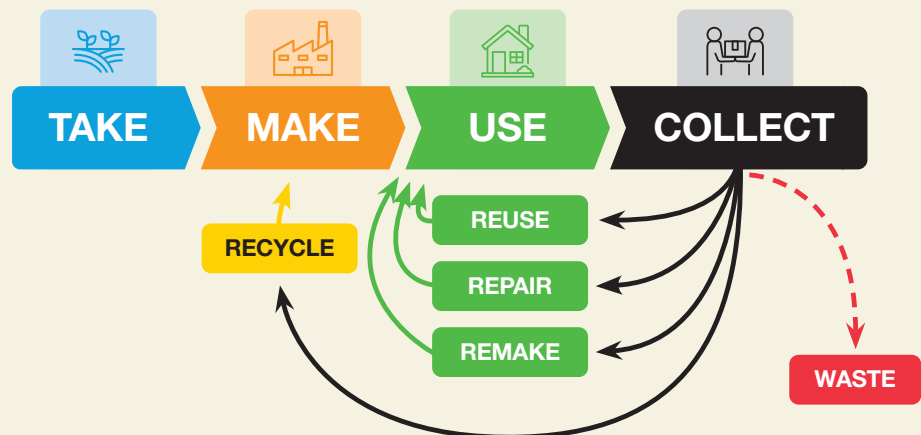


Many countries around the world have embedded circular economy principles in waste strategies, including those in Europe, Australia, and many in the South Pacific.

THE LINEAR ECONOMY



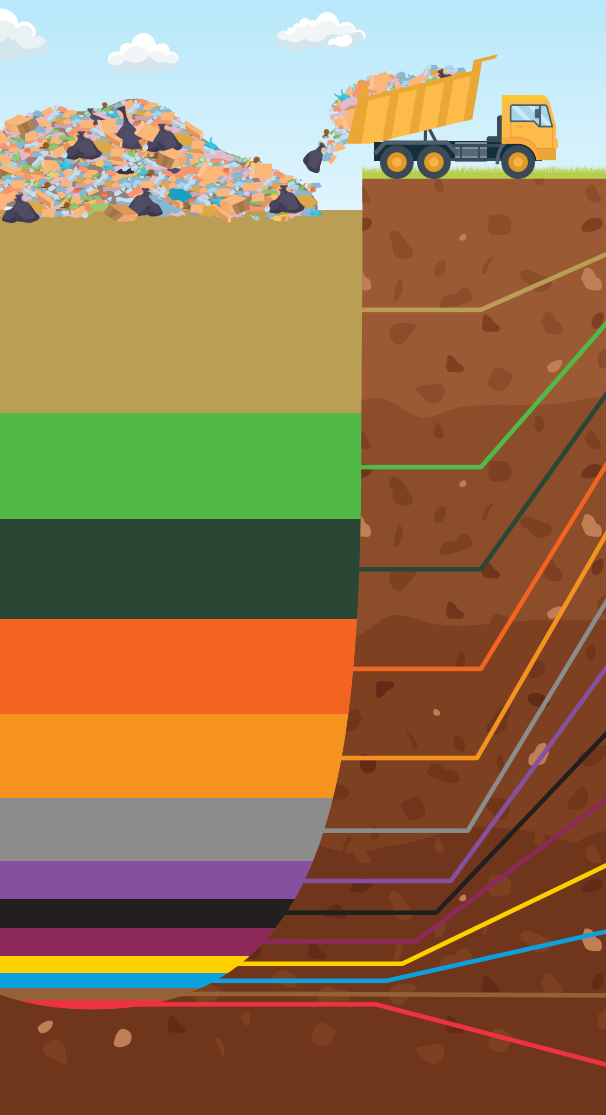
THE CIRCULAR ECONOMY



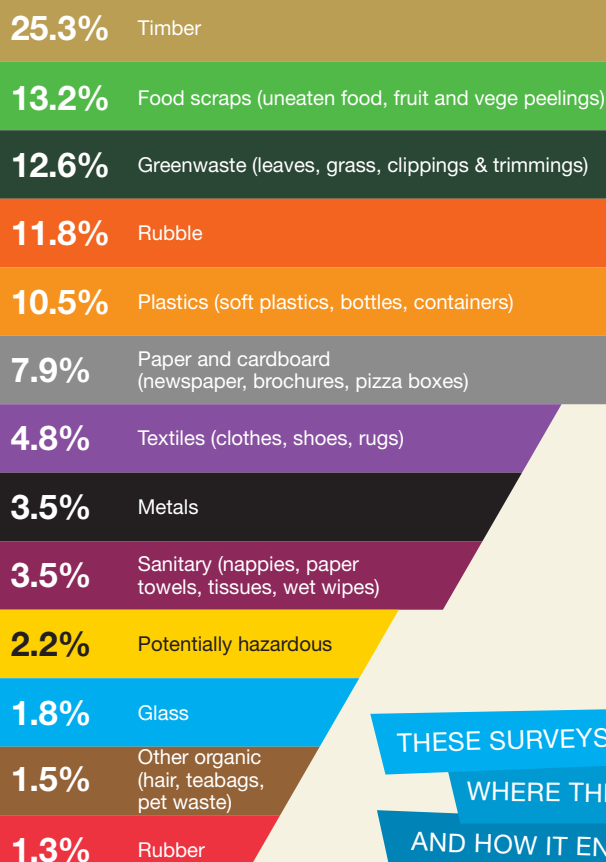
To achieve this, there are several problems we need to solve.

As a district we send a lot of waste to landfill, creating greenhouse gas emissions and wasting finite resources.

The Waste Assessment helps us understand what this waste looks like, and how and why it ends up in landfill. We develop this understanding by undertaking regular surveys including at the Queenstown and Wānaka transfer stations and Victoria Flats landfill.

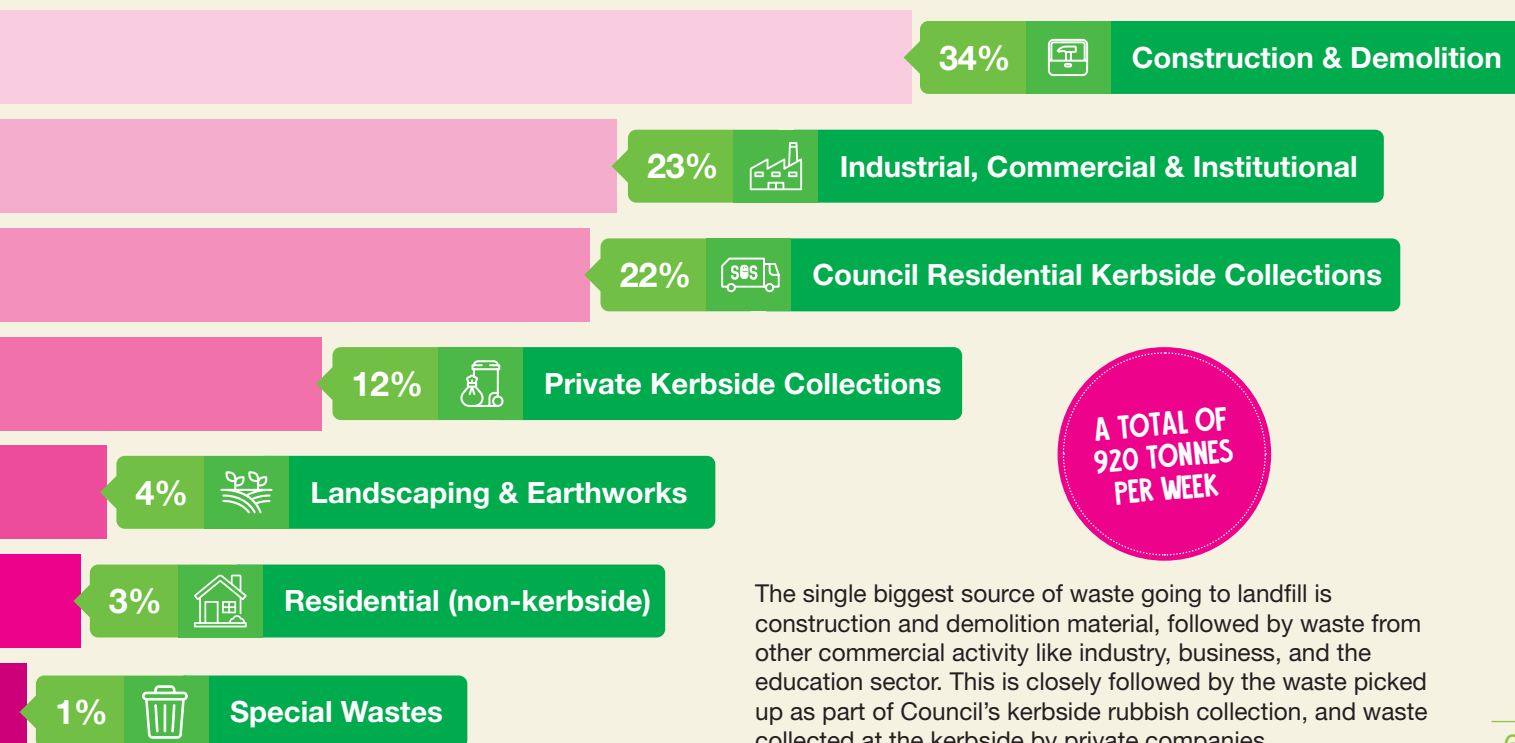


What's in the Victoria Flats landfill?



THESE SURVEYS ALSO TELL US
WHERE THE WASTE CAME FROM
AND HOW IT ENDED UP IN LANDFILL

Sources of waste to Victoria Flats landfill



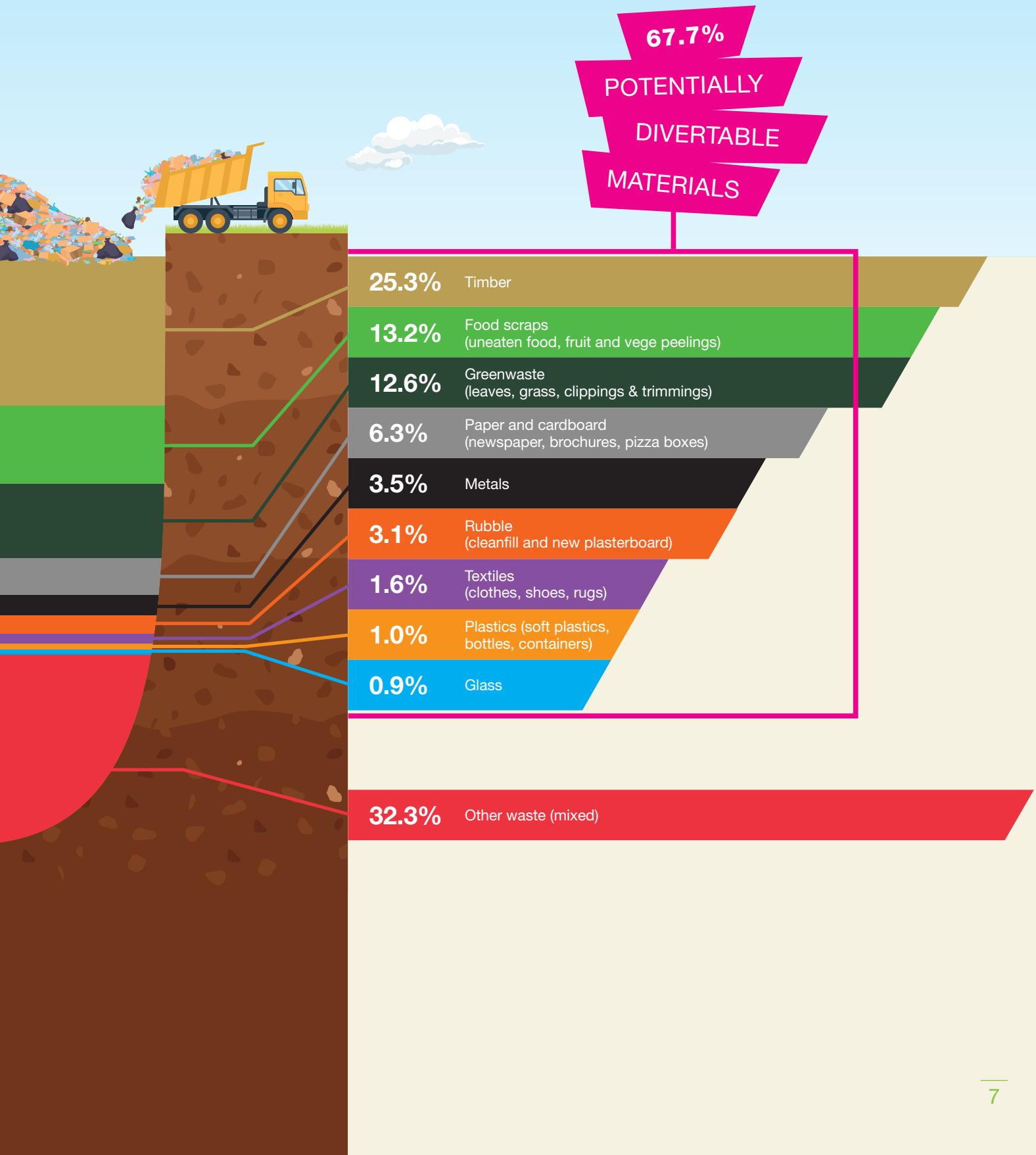
A TOTAL OF
920 TONNES
PER WEEK

The single biggest source of waste going to landfill is construction and demolition material, followed by waste from other commercial activity like industry, business, and the education sector. This is closely followed by the waste picked up as part of Council's kerbside rubbish collection, and waste collected at the kerbside by private companies.

What can be diverted from Victoria Flats landfill?

When we survey the types of materials that are disposed of at landfill, we can see over 67% could instead be avoided, reused, composted, or recycled.

The biggest quantity of material we send to landfill is timber which could be reused, followed by food scraps and garden waste, which can be composted. There are also other materials in the landfill that can be recycled, like metals, glass, plastic containers, paper and cardboard.

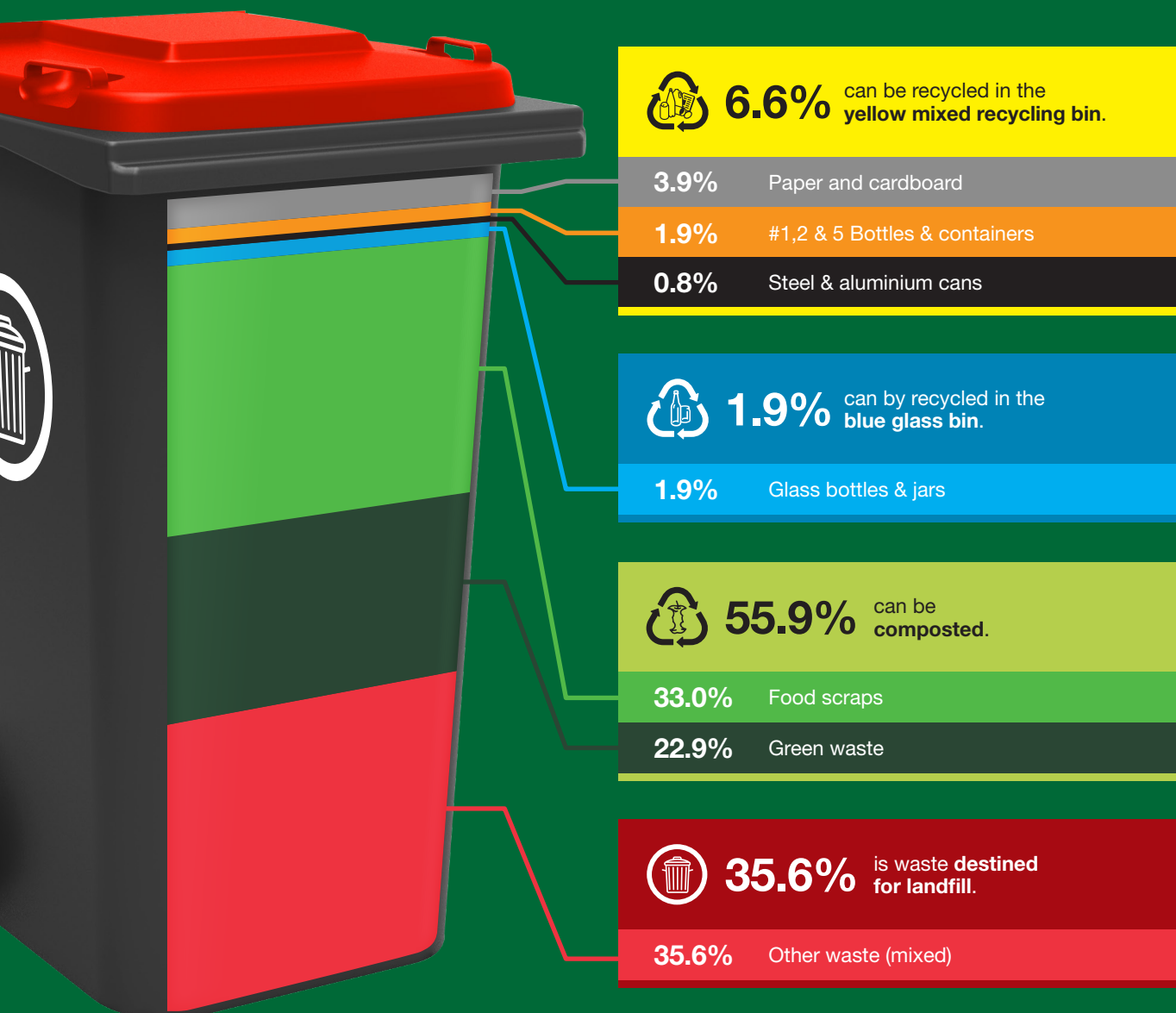


To understand what else could be diverted, we have also surveyed the waste collected in the Council kerbside rubbish bins:

WHAT CAN BE DIVERTED FROM OUR RED RUBBISH BINS?

Nearly two thirds of the waste sent to landfill, and the waste put out for collection in the Council's rubbish collection, can be recycled or composted – and even more can be avoided or not used in the first place.

These surveys also show that Council only has direct influence over a relatively small proportion of the waste stream – the 22% that is picked up in kerbside collections.



**64.4% CAN BE RECYCLED OR
COMPOSTED INSTEAD OF BEING
SENT TO LANDFILL**

SO HOW WILL WE ACHIEVE OUR VISION?

Good progress has been made over the past six years⁶ but there is still much more to do. We've identified five objectives to help make more progress towards our vision. We've also identified that the vision cannot be achieved by Council alone, it relies on a wide range of community stakeholders each playing distinct yet interconnected roles. Here's how it all works together:

WMMP Vision: Together towards zero waste and a circular economy

In order to achieve this we will work in partnership with the community...



...and together we will focus on delivering actions against five key objectives...



...and make decisions informed by our guiding principles...



... and we will measure our success by



⁶ Further information about our progress can be read on pages 19-23 of the draft WMMP at letstalk.qldc.govt.nz/wmmp

TAKING ACTION

The proposed action plan is separated into sections to address the five key objectives described above. It also outlines how each part of the community can support change, along with specific actions for Council's implementation.

The full action plan can be read on pages 28-45 of the Draft WMMP. Some highlights include:

SUPPORT
THE BETTER BUILDING
WORKING GROUP
TO DELIVER BEST
PRACTICE INITIATIVES
IN THE CONSTRUCTION
AND DEMOLITION
SECTOR

A KERBSIDE
ORGANIC WASTE
COLLECTION SERVICE FOR
ELIGIBLE RESIDENTS

REDUCED
FREQUENCY OF
GENERAL KERBSIDE
WASTE COLLECTION
WHEN ORGANIC
WASTE COLLECTION
IS IMPLEMENTED

MATERIALS
RECOVERY FACILITY
UPGRADE

TRANSFER
STATION UPGRADE
IN WĀNAKA

CONTINUE TO
BOOST GRASSROOTS
ZERO WASTE INITIATIVES
THROUGH THE ANNUAL
WASTE MINIMISATION
COMMUNITY FUND

The draft WMMP also outlines possible methods that could be used to fund the actions, including general and targeted rates, user fees and charges, landfill levies and government contestable funds.

HOW TO MAKE A SUBMISSION

There's lots of ways to get involved.



Visit letstalk.qldc.govt.nz/WMMP and make a submission online



Send us an email at letstalk@qldc.govt.nz with the subject line 'WMMP submission'



Write us a letter and post to:
WMMP, Queenstown Lakes District
Council, Private Bag 50072,
Queenstown 9348

There are a number of opportunities to talk to us in person. Check out the Lets Talk page to find out when and where we will be.

Everyone who makes a submission has the opportunity to speak at a hearing. The hearing will be held in early July. When you make a submission, make sure you let us know if you'd like to take up this opportunity and we'll get in touch to arrange an appropriate time.

SUBMISSIONS CLOSE ON

30 JUNE 2025

HOW TO FIND OUT MORE

READ THE FULL DRAFT WMMP AT

[LETSTALK.QLDC.GOV.T.NZ/WMMP](https://letstalk.qldc.govt.nz/wmmp)

You'll also find the Otago Region
Waste Assessment used to develop
the plan and lots of supporting
information and background reading.

HAVE YOUR SAY AT
 [LETSTALK.QLDC.GOV.T.NZ](https://letstalk.qldc.govt.nz)
BY 30 JUNE 2025