

LET'S TALK KŌRERO MAI

THE QUEENSTOWN LAKES DISTRICT COUNCIL NEWSLETTER // AUGUST / SEPTEMBER 2024 // ISSUE 162

THE QLD C NEWSLETTER
FORMERLY KNOWN AS SCUTTLEBUTT!



Libraries: Let's make some noise!

Work

Learn

Explore

Connect

Relax

With a new website, an end to late fines, and the ability to borrow far more than books there's never been a better time to join or revisit your local library.

FIND OUT MORE ON PAGE 8

INSIDE

03

WĀNAKA LAKEFRONT
PROJECT

04

LONG TERM PLAN
UPDATE

10

FUTURE PROOFING
OUR ECONOMY

23

ADVOCATING
FOR OUR DISTRICT



Tell us if you want to save paper and read Let's Talk Kōrero Mai online. See page 15 for details.



Let's Talk Kōrero Mai is printed on paper sourced from sustainably managed forests.



Let's Talk Kōrero Mai is recyclable. Please recycle me.

Your Council

Ever wondered how to contact your elected representatives for a chat about what's happening in your community? We've listed your Councillors and the areas they represent, along with their email addresses so you can get in touch.

There are also opportunities to pop along and see them in person at 'share with us' sessions:

WĀNAKA-UPPER CLUTHA WARD

Every two months the Wānaka-Upper Clutha Community Board hosts a lunchtime drop-in session at Paetara Aspiring Central (off Cliff Wilson Street). The next sessions are scheduled for **4 September** and **6 November, 12.00–1.00pm**.

ARROWTOWN-KAWARAU WARD

Arrowtown-Kawarau ward Councillors will shortly be hosting regular drop-in sessions at **Arrowtown Library**. Watch this space!

All welcome!

WĀNAKA-UPPER CLUTHA COMMUNITY BOARD



Simon Telfer (Chairperson)
Simon.Telfer@qldc.govt.nz



Chris Hadfield
Chris.Hadfield@qldc.govt.nz



Linda Joll
Linda.Joll@qldc.govt.nz



John Wellington
John.Wellington@qldc.govt.nz

Councillor Bruce

Councillor Cocks

Councillor Tucker



**QUEENSTOWN
LAKES DISTRICT MAYOR
GLYN LEWERS**

Glyn.Lewers@qldc.govt.nz

ARROWTOWN-KAWARAU WARD

Arrowtown, Gibbston, Shotover Country, Lake Hayes Estate, Dalefield and Arthurs Point.



Councillor Craig 'Ferg' Ferguson
Craig.Ferguson@qldc.govt.nz



Councillor Lisa Guy
Lisa.Guy@qldc.govt.nz



Councillor Melissa White
Melissa.White@qldc.govt.nz

QUEENSTOWN-WHAKATIPU WARD

Jacks Point, Hanley's Farm, Kingston, Frankton, Quail Rise, Kelvin Peninsula, Glenorchy, central Queenstown and Fernhill.



Councillor Gavin Bartlett
Gavin.Bartlett@qldc.govt.nz



Councillor Niki Gladding
Niki.Gladding@qldc.govt.nz



Councillor Esther Whitehead
Esther.Whitehead@qldc.govt.nz



Councillor Matt Wong
Matt.Wong@qldc.govt.nz

WĀNAKA-UPPER CLUTHA WARD

From the top of the Crown Range and all of the Upper Clutha area including Hāwea up to just beyond Makarora and including part of the Matukituki Valley in Mt Aspiring National Park.



Deputy Mayor Quentin Smith
Quentin.Smith@qldc.govt.nz



Councillor Barry Bruce
Barry.Bruce@qldc.govt.nz



Councillor Lyal Cocks
Lyal.Cocks@qldc.govt.nz



Councillor Cody Tucker
Cody.Tucker@qldc.govt.nz

Next stage of Wānaka lakefront project underway

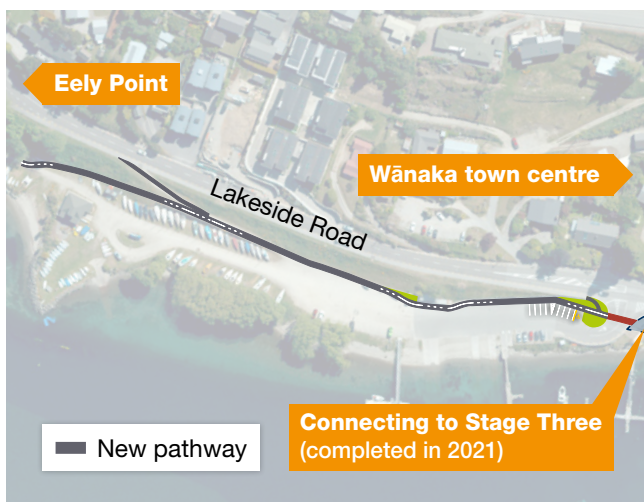
Spades have hit ground in work to improve safety and existing active travel connections on Wānaka’s lakefront between the marina and yacht club – part of Stage Five of the Wānaka Lakefront Development Plan (WLDP).

The project features an extension of the 2.5 metre shared pathway Te Ara Wānaka that already weaves along the lakefront, with a new section to run alongside the bank between Lakeside Road and the marina and yacht club, before connecting with the start of the Eely Point lakeside trail.

Given the location plays host to plenty of vehicles, boats and trailers throughout all seasons, the formalised pathway will help keep people safe when moving through the area while maintaining the existing space for recreational lake users. The project also includes three additional car parking spaces for those using the marina.

Once complete, Stage Five will complement already completed stages of the WLDP and the significant access, ecology and land use improvements each have delivered to date.

Work is expected to be completed by the end of October.



Pedestrian detours will be required along Lakeside Road while work is underway, but controlled vehicle access will be maintained for marina, yacht club, and boat ramp users.

Find out more at qldc.govt.nz/wldp-s5

*Thig an nathair as an toll
Là donn Bride,
Ged robh tri troighean dhen t-sneachd
Air leac an lai*

*The serpent will come from the hole
On the brown Day of Brigid,
Though there should be three feet of snow
On the flat surface of the ground*



**IMBOLC BLESSINGS
FROM VIVIAN AND ESPIE**

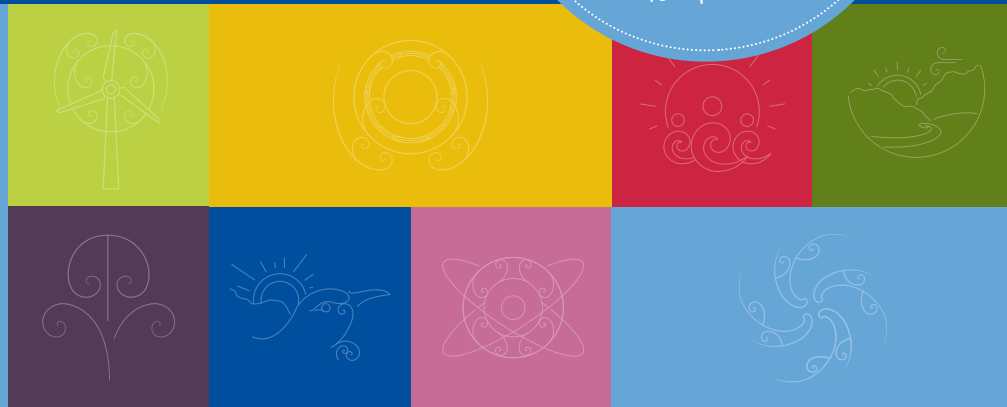
vivian+espie
resource management and landscape planning (03) 441 4189 www.vivianespie.co.nz

Out and about with the Long Term Plan



Keep an eye on
📌 letstalk.qldc.govt.nz/long-term-plan-2024-2034
or Facebook @QLDCinfo
for updates.

A huge thank you to everyone who got involved in the recent consultation about the draft Long Term Plan 2024-2034.



Mayor Glyn Lewers and Councillors attended 14 community engagement events right across the district during July. They have the difficult job of trying to align the differing views of our diverse community, so getting out and about into the community meant they were able to talk to as many people as possible.

We received more than 900 submissions covering a huge range of topics. Some of the key themes included investment in community facilities, a proposed targeted rate for Queenstown town centre properties, and alternative ways to fund infrastructure.

As you read this, Councillors will just be wrapping up deliberations after public hearings of submissions in both Queenstown and Wānaka. Then Council officers will make updates to the draft plan based on direction provided by Councillors throughout this process. An updated LTP will be presented for final Council adoption at the Full Council meeting on 19 September.



Deputy Mayor Quentin Smith chatting to local residents at Wānaka Library.



Great turnout at Paetara Aspiring Central where the Mayor, Deputy Mayor, Councillor Barry Bruce and Councillor Lyal Cocks met with local residents to discuss the draft LTP.



Councillors Niki Gladding, Melissa White and Gavin Bartlett discussing the draft LTP over a cuppa at Glenorchy Hotel.



The sun was shining as Mayor Glyn Lewers and Councillor Esther Whitehead engaged with locals and visitors at Remarkables Market.



We invited people to provide feedback by adding sticky notes to project boards displayed at various Council venues.

Share with us Wānaka Upper Clutha Community Board

Having conversations at home or work about what's happening in the Upper Clutha? Come along and share with us, we would love to hear your ideas that benefit our community and help visualise our future.

When: 4 September, 6 November.
Time: 12.00-1.30pm
Where: Paetara Aspiring Central,
35 Plantation Road, Wānaka.



Sign up to receive updates!



Property Management Award Winners 2023!

- ★ Excellence in Customer Service
- ★ Excellence in Business Development
- ★ Rising Star Property Manager

Talk to our award-winning team for honest, expert advice and a free market appraisal.



03 442 3815
housemart.co.nz



All action on the Arterial Road

It's been another busy month of progress on the Arterial Road project.

The Kā Huanui a Tāhuna team is close to completing work to upgrade infrastructure under the ground, which has involved shifting, upgrading and installing new services along the full length of Stage 1, between Frankton Road and Gorge Road.

We often talk about the benefits this road will bring for the Queenstown Town Centre, but the underground component has significant benefits too. Upsized wastewater and water supply pipes will better cater for our current population and future growth, and upgraded stormwater systems bring environmental benefits, further protecting the water quality of Lake Whakatipu.

Some highlights over the past month include progressing work at the intersection of Sydney and Melbourne streets. This has now reopened until Spring when we'll come back to complete the pavement construction and lay the asphalt. In the meantime, the team is busy upgrading footpaths, installing light and traffic poles and preparing garden beds for planting.

The large retaining wall in front of St Joseph's school is also now complete. By hydroseeding the filled area behind the walls, the kids will have an improved grass space ready for spring games and summer sports days.



The arterial road joining Henry Street.

Looking ahead

Here's a summary of work coming up over the remainder of 2024, and next year:

> **Gorge Road / Turner Street:** after ski season the team will return to install a traffic island, traffic signals, street furniture and planting, along with a safe crossing on Turner Street.

> **New traffic signals** will be installed at the intersections of Gorge Road/Henry Street, Sydney Street/Melbourne Street, and Melbourne Street/Frankton Road. Timing for this is to be confirmed.

> **Flush crossings for Dublin, Suburb and Turner Streets:** these crossings allow people to safely cross the road and are provided at non-signalised intersections. This is currently expected to happen in October.

> **Lower Ballarat Street stormwater upgrade:** we're boosting the resilience of the overall stormwater network by laying 90 metres of upgraded stormwater pipes. This will ensure we can better manage uphill stormwater runoff, particularly during more intense rainfall events associated with a changing climate. As part of this work, we'll build a headwall by the bridge at Horne Creek to support and protect the stormwater pipe. The timing of this work will be confirmed and communicated soon.

> **The final road surface:** we're still planning the best way to do this and will share more soon.

> **Above ground installations** such as street furniture, planting, line-marking and signage.

Next year:

Once traffic is flowing on the Arterial Road, there's still some final work to complete. We've provided some high-level details below and more will be shared soon.

> **Stormwater connection at Stanley Street intersection:** this is the final piece of the stormwater puzzle. The work involves connecting the piped stormwater network installed in upper and lower Ballarat Street within the Stanley Street intersection. Because this work is within the state highway, we won't start until the Arterial Road is open to traffic, to minimise disruption as much as possible.

> **Finishing touches for side roads:** once the Arterial Road is open we'll also be completing work on the side roads. This includes constructing a turning circle on Malaghan Street, final landscaping and de-commissioning the Ballarat Street yard which is currently being used as a site office and to store machinery and supplies.

Stay up to date

Scan to sign up for a monthly update on the Town Centre Arterial and Frankton Intersection and Bus Hub Improvement project.



Everyone is welcome at our libraries

Safe spaces, inspiring places, welcoming faces – your Council libraries are certainly something to shout about!

From Kingston to Makarora, Glenorchy to Lake Hāwea there are eight branches across our district and a whole world of resources available online via the brand new libraries website.

Head in for regular programmes like pre-school storytime, wriggle and rhyme, LEGO® Club, social English conversation and book clubs. There are also guest speakers, digital classes and support, virtual reality kits, dedicated teens spaces, public PCs and private study desks.

The best thing? Funded by local rates, it's completely **free to join**, logon to wifi and to borrow most items. What's more, they've just become **fine free**. To reduce barriers to library services, books and all other library items no longer accrue overdue fines, and all existing fines have been forgiven.

Your next chapter begins here!



Library Branches

Arrowtown

Kingston

Frankton

Makarora

Glenorchy

Queenstown

Hāwea

Wānaka

Relax, your library is now

fine free



Frankton Library

libraries

whare pukapuka
Queenstown Lakes

More than books

As well as thousands of books in formats including graphic novels, large font, and dementia- and dyslexia-friendly, did you know you can also borrow board games? If the weather forces you inside or if you just want some quality time with friends and family why not head in to grab Scrabble, Chess, Catan, Cluedo and heaps more.

And to get you outside, they even loan beginner telescopes and bird-watching kits as an introduction to the new Library of Things – a sustainable way to borrow. Watch this space as more items come on board.

Available 24/7 from wherever you are, free online resources include eBooks, eAudiobooks, eMagazines, car manuals, films and docos to stream, language learning apps and ancestry research tools.



How to join

It's easy to become a member!

Fill out our online form via this link:
qldclibraries.govt.nz/join
(or scan the QR code)

Head to any one of our libraries to complete your registration and collect your card.



 qldclibraries

 qldclibraries.govt.nz

 qtlakeslibraries

 libraries@qldc.govt.nz

For Families

- » Storytime
- » Wriggle & Rhyme
- » LEGO® club
- » Virtual reality
- » Teens space



Education & Life Long Learning

- » Book clubs
- » Digital classes and support
- » Guest speakers
- » Regular programmes and events
- » IELTS and ESLs Resources

Facilities

- » Free wifi
- » Photocopying & scanning
- » Public PCs & Chromebooks
- » Work and study tables



ENTRUST YOUR BIGGEST ASSET WITH AN AWARD WINNING TEAM



Property Management Company of the Year

Excellence in Team Culture
Excellence in Business Performance
Industry Award
Excellence in Administration

HOME & CO.
QUALITY PROPERTY MANAGEMENT - GUARANTEED

(03) 443 2273 - rent@homeandco.co.nz
www.homeandco.co.nz

Alpine Aqualand update

Alpine Aqualand's scheduled maintenance period was a challenge and the leisure pool closure went on longer than anticipated.

A lot of great work was done by the team:

- > A large-scale deep clean of the pools and filters – this included draining and refilling the hot pool, leisure pool and toddler pool.
- > Deep cleaning the change rooms.
- > Extension of traxite (floor coating) and tiling in the change rooms.

Maintenance and repair work continues on 'The Mountain' – the concrete structure in the middle of the leisure pool. It's been a difficult process that meant keeping the leisure pool closed much longer than anticipated.

The leisure pool is open once more and we'd like to thank the community for their patience. We know just how valuable it is to families and recreational swimmers.

While work continues on The Mountain we're unable to operate our hydroslides. Be sure to follow **Facebook @QLDCSportRec** to hear when they'll be back open for more awesome fun.



Future-proofing our economy

Over the past year we've worked closely with a wide range of local organisations to develop an economic diversification plan for the district.

The plan *New pathways to a thriving future* | *Kā ara hou ki te anamata tōnui* is designed to foster a wider range of industries and career opportunities that will help future generations build roots in the district.

It was endorsed by Councillors at a public meeting in Wānaka on 1 August and sits alongside a range of plans that seek to address climate and biodiversity, workforce and technology, housing, and spatial planning challenges and opportunities.

It aligns with these plans to ensure the needs of the businesses and industries we want to foster are considered from the outset, and to ensure the benefits of diversification extend to our community and te taiao (the environment).

New pathways to a thriving future combined with the previously endorsed destination management plan *Travel to a thriving future* will replace the district's existing economic development strategy. This signals a move from destination marketing to destination management, and a greater emphasis on the need to diversify the local economy.

Find out more and read the plan online at

[1 qldc.govt.nz/community/economic-development/diversifying-our-economy/](https://www.qldc.govt.nz/community/economic-development/diversifying-our-economy/)



New pathways to a thriving future
Kā ara hou ki te anamata tōnui

Queenstown Lakes Economic Diversification Plan
Mahere Whakawhānui Ohaoho o Queenstown Lakes

Film and creative industries are one of the opportunities identified.

(Credit: One Lane Bridge – Great Southern Television)

Partners and supporters:



HOLIDAY HOME MANAGEMENT
Sorted.

We offer all-round service from marketing, guest interaction, cleaning to property maintenance, giving our clients a complete handsfree, stress free experience. Contact us for a free assessment of your property's rental potential.

Ask us about our latest referral program.

LUXE STAY
 Queenstown • New Zealand

+64 21 126 3900 | hello@luxestay.co.nz | www.luxestay.co.nz

'Postcards' from recent events

We thought it would be good to round-up some recent events around the district with a few photos to tell the story.



ARROWTOWN LIBRARY'S 'BIG 4-0'

Balloons, streamers and party food marked Arrowtown Library building's 40th birthday celebration in July. It was lovely to see so many people drop by including past and present librarians, long-standing local bookworms, and even the original architect and builder! There were plenty of stories too, told by guests on the day and in displays showcasing significant milestones and characters. Many happy returns!



MARINA CARPARK GETS SHIPSHAPE

Work got underway beneath Glenorchy's snow-capped peaks in August to upgrade the marina carpark. We'll be formalising the area, making it safer and much easier to use, and a new stormwater system will protect the water quality in Lake Whakatipu. Whilst the area will be closed during construction, alternative parking is available in other lakefront carparks or along Benmore Place. We'll make sure it's accessible during the annual fishing comp, and access to one boat ramp will be retained apart from a few days when we're laying asphalt. For more info visit

qldc.govt.nz/glenorchy-marina-upgrade

ONE PLAN TO WELCOME THEM ALL

We've worked alongside the community to develop a draft, three-year Welcoming Plan for our district. The aim is to ensure that all newcomers – whether they're from within Aotearoa New Zealand or around the world – are able to thrive. Evening hui held in Queenstown and Wānaka during the feedback period gave heaps of people the chance to discuss the proposed actions, ask questions and connect with others. After reviewing all the great feedback, the final Welcoming Plan 2024-2027 will be presented to the Community & Services Committee for adoption in late September.



WATER IN THEM THAR HILLS!

Founded during the gold rush, it's now water 'whooshing' around Cardrona township thanks to Council's \$35M investment in new reticulated wastewater and water supply schemes. Work began in 2014 but most occurred over the last five years. As well as servicing the needs of current residents, the infrastructure has been designed to accommodate future growth including within Mt Cardrona Station. QLDC worked closely with the developers of this new 400-hectare sub-division who delivered much of the scheme on their land. Mayor Lewers was invited to cut the ribbon at an event in late July celebrating the first residents' arrival. (Image credit – Motion Bros)

EVERYONE'S FREE TO GET ARTY

Te Atamira in Frankton was one of the grant recipients via the QLDC Community Fund 2024-2027 (see page 18). The multi-purpose arts and cultural space hosts free regular programmes such as Community Sing/Dance/Draw drop-in sessions on the first/second/third Tuesdays of every month. Saturday Arts Social is a multi-arts programme and morning tea designed for our 60+ community. Recent sessions have included origami and Korean drumming workshops, and (pictured) pianist Mark Wilson, Andrea Balona from QTCats and the Turn up the Music orchestra laying down the tunes. For more visit teatamira.nz



All things planning

The rules around residential flats

Ever thought about creating a residential flat on your property? If so, you'll be pleased to know rules in our district make it nice and easy to provide small scale accommodation for others, whether it's a dwelling next to your house that can be rented by others, or for grandparents or extended family to live in.

A residential flat (as defined in our District Plan) is an additional unit which is smaller than the main house, and has a kitchen. There are a few more specific rules which apply to properties located in certain areas throughout the district.

Known as 'granny flats' by some, residential flats help to increase the supply of affordable housing options, and have recently been the focus of a proposal by the Ministry of Business, Innovation and Employment (MBIE) and the Ministry for the Environment (MfE) to make it easier to build small, self-contained and detached houses on property with an existing home on it.

If you'd like to learn more, get in touch with Council's Policy Planner service by calling **03 441 0499** or email pdpenquiries@qldc.govt.nz

Shining a light on solar panels

Solar panels are an increasingly popular way to generate renewable onsite electricity. For those thinking about tapping into the power of the sun, our District Plan rules generally focus on how the solar project looks.

Depending on what zone the property is in, our rules consider the colour of the panels, how high above a roof they sit, where they're attached, and a few other requirements too.

There are also a few locations where solar panels automatically require resource consent due to their visually sensitive nature.

If you're planning to put the sun to work at your property, be sure to check out our Solar Panel Factsheet at qldc.govt.nz/resource-consent-guidance, or by calling **03 441 0499** or email services@qldc.govt.nz

Urban Intensification Variation hearings coming next year

Independent Commissioners have been appointed to the Independent Hearings Panel that will oversee the proposed Urban Intensification Variation in our district. Hearings are set to be held some time in 2025, and the Panel will include Jane Taylor (Chair), Ian Munro and Councillor Lyal Cocks.

More information on the commissioners and the Variation can be found at qldc.govt.nz/urban-intensification

EQC becomes Natural Hazards Commission

The Earthquake Commission (EQC) has changed its name to the **Natural Hazards Commission Toka Tū Ake**, reflecting its role in supporting communities to prepare for and recover from a range of natural hazards, not just earthquakes.



Natural Hazards Commission Toka Tū Ake

The Natural Hazards Commission is the Government's natural hazards insurance scheme. It provides baseline property cover for insured homeowners, and supports more resilient communities by raising awareness through research and education before events occur.

The new name is one of the changes introduced by the new Natural Hazards Insurance Act that came into force 1 July to update and modernise the legislation.

The Commission is encouraging all homeowners to 'know your cover', including what's covered and what's not. Read more at [📍 knowyourcover.co.nz](https://www.knowyourcover.co.nz)

Learn more about the work NHC Toka Tū Ake is doing to reduce the impact of natural hazards on people, property and the community:



@naturalhazardscommission



@company/naturalhazardscommission



[naturalhazards.govt.nz](https://www.naturalhazards.govt.nz)



Get me via email

This newsletter is mailed to our local residents and out-of-town, NZ-based ratepayers six times a year. If this means you, and you still want to receive a hard copy, then sweet as – you don't need to do anything.

But if you'd like to join the thousands of people who prefer to receive a digital copy via email then it's easy to switch. Just email services@qldc.govt.nz with the word "newsletter" as the subject and be sure to include your name, postal address and the address of your property in the district so we can cross you off the mailing list.

We'll send you a website link six times a year to view/download all future issues instead (and won't spam you with anything else!). You'll be helping us reduce the number of copies we print and distribute.

And remember, every issue is also on our website [📍 qldc.govt.nz/lets-talk-korero-mai](https://www.qldc.govt.nz/lets-talk-korero-mai)



From the Chambers

NEW (OLD) BUILDING FOR A&P SOCIETY

The Upper Clutha A&P Society might be a grand, old lady but she's in good health at nearly 130 years old.

However, the society building on the showgrounds, although somewhat younger, has not fared so well and has been in need of a facelift for some time.

A report to the Wānaka-Upper Clutha Community Board in August was the final step in a long process, with the Board approving alterations to the existing building. This was the preference of the society, which owns the building, after it decided against constructing a new one due to cost and a wish to follow a different strategic direction.

The current yellow and green panelling doesn't really speak 'high country' so these panels will be covered with macrocarpa boards, and the pillars clad in schist. The 'new' building will be much more in tune with our alpine environment – a more pleasing sight from the roadway and a building that reflects the heritage values of Wānaka A&P Show, one of New Zealand's largest agricultural, pastoral and community events.

MEETING VENUES TO TEST THE MEMORY

This spring, we're hosting official meetings in locations we haven't used before. Or maybe we have!

A Wānaka-Upper Clutha Community Board meeting is scheduled to take place at Cardrona Community Centre on 10 October, and a Full Council meeting is booked for Arrowtown Community Centre two weeks later.

The Board has held meetings in different locations around the Upper Clutha for several years now but, as far as current Council officers and elected members can recall, never in Cardrona. Similarly, no one can remember the Council meeting in Arrowtown before.

Have you got a better memory than us? We'd be keen to hear from you if you have evidence we've been to these locations since 1989 when different local authorities were amalgamated to form QLDC. Please email governance@qldc.govt.nz – no prizes but heaps of brownie points!

Both these meetings will be open to the public and start at 10.00am (Board) and 1.00pm (Council). Don't forget anyone can register to speak in the public forum by contacting the governance team in advance.

NAVIGATION SAFETY BYLAW REVIEW


Being able to access and play in our wonderful lakes and rivers is very much prized by locals and visitors alike.

QLDC manages safety on the district's waterways via the Navigation Safety Bylaw 2018 and this is coming up to its five-year review.

The bylaw applies to all the district's navigable waters and foreshore. It regulates a range of activities such as the use of vessels, ski lanes, sporting and training events, and life jacket use.

Consultation will start in spring with a hearing of submissions expected to take place before Christmas. Consultation will be open for a month, so keep a look out for it on our Let's Talk online engagement portal.

Did you know you can tune in live to our full Council meetings or watch them later?

 qldc.govt.nz/your-council/council-documents/agendas-minutes

 @qldcinfo



Two cabins were successfully relocated from Cemetery Road, Queenstown.

In a full circle moment, one of the cabins has even returned to its original family owners and its 'birthplace' in Otatara, Southland.

New lease of life for cabins

Work is underway to convert land at Cemetery Road, Queenstown into a future recreation reserve.

This has involved clearing 29 cabins from the site and restoring the land to ensure it's in good condition for the public to enjoy.

While originally earmarked for demolition, the project team noticed two of the cabins were in good enough shape to be potentially relocated. In early July, both were lifted onto a relocation truck and are on their way to a new life.



Construction and demolition waste accounts for around **32% of the overall waste** generated in our district. A large portion of this material could be diverted from landfill through good design and onsite work practices. We've had clear waste minimisation objectives throughout this project and, by relocating these buildings, we're on track to achieve over **70% of material diverted from landfill**.

Rent Your Home With Confidence



Your investment is our priority. Get in touch today!



Rentals Made Easy
Great Returns - Smart Solutions - Sound Advice

+64 (0)3 409 0480 purepropertyrentals.co.nz

Funding recipients announced

Earlier this year, we opened applications for three Council funds: the Community Fund 2024-2027, Events Fund and Waste Minimisation Community Fund.

As always we were blown away by the creativity and passion by local non-profits and companies working towards community-minded goals.

Full details about each fund as well as present and past recipients are available on our website.



COMMUNITY FUND 2024-2027

We awarded \$1,778,000 in grants for the year to June 2025 to community groups and not-for-profit organisations operating across the district.

QLDC's Resilience and Climate Action team contributed **\$200,000** to the total fund to help support the ongoing delivery of community-led climate and biodiversity programmes.

Applicants were able to request up to three years of operational or project funding through this round. The total Community Fund allocated for 2024-2027 was **\$4,974,000**.

Among the 69 individual groups benefiting – more than double the number in the previous round – were Whakatipu Wilding Conifer Control Group, Community LINK, Happiness House, Whakatipu Youth Trust, Kāhu Youth Trust, WAI Wānaka and KiwiHarvest.

Smaller beneficiaries included sports clubs, family support organisations, and community gardens.

A significant portion of the grants were to support operational funding to help these organisations keep doing valuable work in our communities.



EVENTS FUND

Our annual contestable events fund supports a balanced portfolio across the district and is open for both commercial and community events.

This year our aim was to support events that have clear goals in place to improve environmental sustainability, including opportunities for waste minimisation and reducing carbon emissions.

Alongside environmental sustainability, other key factors in assessing applications included economic impact, event diversity, positive community benefits and financial sustainability.

This year's recipients are:

Arrowtown Autumn Festival, Central Lakes Polyfest, Challenge Wānaka, Lake Hayes A&P Show, LUMA Light Festival, Motatapu, NZ Golf Open, NZ Junior Rugby – Global Games, NZ Mountain Film Festival, OUT & About Wānaka, Proving Grounds (MTB event), Queenstown Marathon, Queenstown Multicultural Festival, Ripe – Wānaka Wine and Food Festival, The WILD, Wānaka A&P Show, Wānaka Festival of Colour, Wao Summit, Wheels at Wānaka 2025, Winter Games NZ.



WASTE MINIMISATION COMMUNITY FUND

This year, 13 awesome projects have secured a share of the annual Waste Minimisation Community Fund (WMCF).

The **\$60,000** fund supports local initiatives that contribute to waste reduction and resource efficiency in the district. The fund received a diverse range of applications from individuals, community groups and businesses passionate about transforming and repurposing resources, that might otherwise be viewed as waste, into useful items.

There are some really cool initiatives: upcycling grain bags from the brewing process into reusable tote bags, giving a new lease of life to old uniforms and outdoor gear, reviving sewing skills, a tool library, and transforming plastic bottle tops and lids into frisbees.

The full list is:

Wānaka Community Workshop Trust, Naylor Love, Kanuka Corner Early Childhood Centre, Sofia Cinque, TIKKI Studio Ltd, Emma Watts/Shotover School, Ian Fitzpatrick/Trash Goblin, Joaquin Bonet/Profficiency, Remarkables Primary School, Kāhu Youth Trust, Skyline Queenstown, Crimson Badger Brewing, Classic Stitch-Ups.

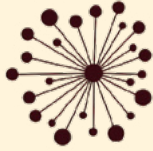


Read all about these and more at:
qldc.govt.nz/wmcf
qldc.govt.nz/community-funding

Airey | Engineering Ingenuity

Airey Consultants Ltd building a better future by delivering excellence in Civil, Structural and Fire Engineering Design

Queenstown Office
03 442 3101 | queenstown@aireys.co.nz | www.aireys.co.nz



wao
Summit 2024
29 Oct - 2 Nov



Wao Summit – unite in climate action



Collaborative efforts are more effective in addressing the climate crisis than individual actions alone. With this in mind, Wao Summit 2024 returns this October on a mission to unite our community in action.

The theme of this seventh annual event is **Better Together**. There'll be five days of workshops, masterclasses and kōrero (conversations) dedicated to Better Building, Better Business, Food Resilience and Climate and Ecosystems. The week will finish with a community Festival for Nature, celebrating all aspects of our environment with live music and films at The Camp in Lake Hāwea.

It's a chance to come together to amplify the impact of our lives and businesses on building a thriving future.

QLDC is once again supporting the summit which will be held from 29 October to 2 November in Wānaka and Queenstown.

Find out more and buy tickets at www.wao.co.nz

ARE YOU A LEFTOVER LEGEND?

Hey foodies! Get ready to spice up your kitchen game with Love Food Hate Waste's Leftover Legends campaign that's proudly backed by QLDC.

Its mission? To chop down on food waste by inspiring Kiwis to transform food destined for the bin into mouthwatering meals.

In NZ alone, more than **130,000 tonnes of food** goes to waste annually. Reducing this not only saves all of us some dough but also preserves our planet's pantry and cuts down on emissions.

As part of its campaign, Love Food Hate Waste is dishing out three myth-busting tips:

MYTH #1 It's unsafe to eat leftover rice. **FALSE!**

Cool it quickly then keep it in the fridge and eat within two days, or store it in the freezer to keep for longer.

MYTH #2 It's unsafe to eat leftover chicken. **FALSE!**

Leftover cooked chicken can stay safe for up to two days in the fridge if you chill it within two hours.

MYTH #3 Frozen veggies are less nutritious. **FALSE!**

Nutritionally, frozen vegetables can be just as good as fresh.

LEFTOVER LEGENDS.

Learn how to lift your leftover game to legendary status:

📍 lovefoodhatewaste.co.nz/home/leftover-legends/

CONTAINING CONTAMINANTS

When non-recyclable items mix with recyclables, it reduces the quality of the end product, drives up the cost of processing, and impacts on the hard-working folk that hand-sort it. Reducing common contamination is a current focus for our team. Top tips include:

- > **Put lids, pumps and spray bottle triggers** in your **RED BIN** (they can't be recycled).
- > **Cartons (Tetra Pak)** also go in your **RED BIN** unless you can take clean ones to Wastebusters in Wānaka for recycling.
- > **Soft plastics** can be taken to some supermarkets for recycling; otherwise throw them in your **RED BIN**.
- > **Discarded vapes** can cause fires in bins – visit 📍 vapecycle.co.nz for how to dispose of them responsibly.

We've recorded some cute video reels to help clean up your recycling efforts: 📺 youtube.com/@qldcinfo/shorts



Your holiday home specialists

Looking for exceptional property management? Look no further! Our expert team provides top-notch service, ensuring your holiday home is well-maintained and guest-ready. Trust us to deliver a seamless experience for you and your guests.

- Management fee 18% - No Hidden Costs
- High Occupancy

Experience the difference. Contact us today by emailing info@luxuryaway.co.nz or call +64 22 362 1588

CONTROLLING RABBITS OVER WINTER

We're halfway through our winter rabbit control programme on Council reserves across the district.

We focus operations during the colder months when vegetation growth slows. This makes rabbits' food scarcer and slows their breeding cycle.

Like all landowners, QLDC must comply with Otago Regional Council's Pest Management Plan (which you'll find on its website). The key to rabbit control is ensuring landowners work collaboratively, and QLDC works hard to achieve this.

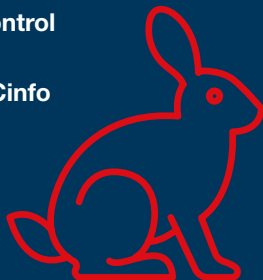
If you live in an urban area, one of the best methods is to install rabbit-proof fencing. We're currently installing it on several Luggate reserves to help protect residential properties and support biodiversity. We've also prioritised fencing in heritage sites such as Shotover and Glenorchy cemeteries.

Wherever possible, we work with local community groups to manage rabbits and help support their native planting initiatives.

For up-to-date information on pest control operations, precautions to be aware of with Pindone bait and alternative trails to walk your dog, head to:

 qldc.govt.nz/pest-control

 facebook.com/QLDCinfo




Testing private water supplies

Remember if you own a private drinking water supply it's your responsibility to maintain, monitor and treat it.

Arsenic occurs naturally in some bore water around our district. Present in low levels in soil, rocks, air and water, people may consume small amounts of arsenic every day for a long time without any obvious health effects.

However, consuming large amounts of arsenic in drinking water can be harmful to health, and consuming moderate amounts of arsenic every day for many years may also cause long-term health effects.

So ensure you include arsenic in your testing regime.

For a list of IANZ accredited laboratories visit  taumataarowai.govt.nz

Flush it out

Did you know some plumbing fittings have the potential to allow minute traces of metals to accumulate in water standing in the fittings for several hours.

Although the health risk is small, the Ministry of Health recommends you flush a mugful of water from your drinking-water tap each morning before use to remove any metals that might have dissolved from the plumbing fittings.

We are recommending this simple precaution for all households, including those on public and private water supplies.



Advocating for our district

Our feedback on proposed law and policy changes.

Over the past couple of months, we've made several submissions on central and regional government's proposed changes to legislation and policy. Our goal is to ensure what's drafted in Wellington or Dunedin is fit for purpose in our district and for our community.

Our full submissions tend to be quite wordy and often cover complex subjects. All are available in full on our website but here's a quick summary so you can see how we're advocating for you.

The Minister of Business Innovation and Employment is reviewing the international visitor conservation and tourism levy.

We asserted that the levy should not be considered a replacement for the proposed local visitor levy for Queenstown Lakes. We also recommended the national levy be apportioned between New Zealand's 30 areas that have destination management plans (which does include our district).

Ministry for the Environment proposes changes to the Emissions Trading Scheme regulations for waste.

We highlighted that the district is committed to moving toward zero waste and being a sustainable district, and recommended time frames be adjusted to spread the financial burden.

Otago Regional Council proposes to reduce the number of councillors in Dunedin by one and add one to the Dunstan constituency which covers Queenstown Lakes.

Our submission recommends creating a new constituency that encompasses our district and Cromwell.

The Government is amending the Resource Management Act in relation to "freshwater and other matters".

In a nutshell, the Bill aims to reduce regulatory burden for farming, mining, and other primary industries. We responded to say we support, in principle, a more streamlined and efficient resource management system but any changes must continue to ensure high quality environmental, social, economic, and cultural outcomes.

Waka Kotahi NZTA is proposing to limit funding for road repair

that's needed after a severe weather event. Along with many other councils, we've explained to the agency why we do not support its plans.

The Government's Local Government (Water Services Preliminary Arrangements) Bill

had a very short time frame for public submissions. Our response recommended that timeframes be adjusted to increase feasibility as the overall scale and nature of the reform will take considerable time to plan and implement.

The Government proposes to reverse speed limit reductions

(made since 2020) and remove councils' ability to lower speed limits on behalf of their communities. We've responded to say that the first priority in setting speed limits must be safety for all road users, and that local authorities, who know their roads best, should be able to set appropriate and safe speed limits.

All these submissions and more can be found in full at [qldc.govt.nz/submissions](https://www.qldc.govt.nz/submissions)

Let's Talk – we'd love to hear from you



Did you know we have a whole website dedicated to consultation and engagement?

Let's Talk is an easy way to contribute to local decision making by having a say on the topics and projects that matter to you and your community. You can even register for a regular update on the latest projects and what's coming up. Here's a snapshot:

Find full details of these projects and more at letstalk.qldc.govt.nz

WHAT'S COMING UP OVER THE NEXT FEW MONTHS:

WASTE MANAGEMENT AND MINIMISATION PLAN REVIEW Stakeholder engagement to start September	MOUNT IRON RECREATION RESERVE MANAGEMENT PLAN Formal consultation expected late September	NAVIGATION SAFETY BYLAW Formal consultation expected October	BEN LOMOND & QUEENSTOWN HILL RESERVE MANAGEMENT PLAN Formal consultation expected December	TE TAPUAE SOUTHERN CORRIDOR STRUCTURE PLAN Engagement expected late 2024	AND MUCH MORE
---	---	--	--	--	----------------------

CURRENT CONSULTATIONS:

SUBDIVISION CODE OF PRACTICE Submissions close late September

FEEDBACK HAS CLOSED AND SUBMISSIONS ARE BEING REVIEWED FOR THE FOLLOWING PROJECTS:

WELCOMING PLAN 2024-2027	LONG TERM PLAN 2024-2034	ELDERLY HOUSING ASSET TRANSFER	UPDATES TO DEVELOPMENT CONTRIBUTION POLICY
---------------------------------	---------------------------------	---------------------------------------	---

QLDC OFFICES

Queenstown Office:

10 Gorge Road
Private Bag 50072, Queenstown
Phone: 03 441 0499

Wānaka Office:

47 Ardmore Street, Wānaka
Phone: 03 443 0024

E-mail: services@qldc.govt.nz

Office Hours:

Weekdays 8.00am – 5.00pm

QUEENSTOWN EVENTS CENTRE

Alpine Aqualand
Alpine Health & Fitness
Indoor Courts
Sports fields
Phone: 03 450 9005

WĀNAKA RECREATION CENTRE

Wānaka Pool
Indoor Courts
Phone: 03 443 9334

PAETARA ASPIRING CENTRAL

Indoor Courts
Studio
Phone: 03 450 1721

VENUES

For more information on our venues please head to qldc.govt.nz/venues

LIBRARIES

For library opening hours and locations please head to codc-qldc.govt.nz

TRANSFER STATIONS

Whakatipu: 110 Glenda Drive
Frankton Industrial Area
Phone: 03 348 5126

Upper Clutha: Cnr of Ballantyne & Riverbank Roads
Phone: 03 348 6125

HARBOURMASTER

Report non-compliance of waterway rules by phone **03 441 0499** or email services@qldc.govt.nz
In an emergency on the water always call **111**

EDITORIAL & ADVERTISING CONTACT

Let's Talk Kōrero Mai is published bi-monthly by Queenstown Lakes District Council to inform ratepayers and residents of council activities.

Sam White ✉ communications@qldc.govt.nz
Feedback and ideas are welcome.

LET'S TALK KŌRERO MAI // AUGUST/SEPTEMBER 2024 // ISSUE 162 // www.qldc.govt.nz

ISSN 3021-2464 (PRINT) ISSN 3021-2472 (ONLINE)