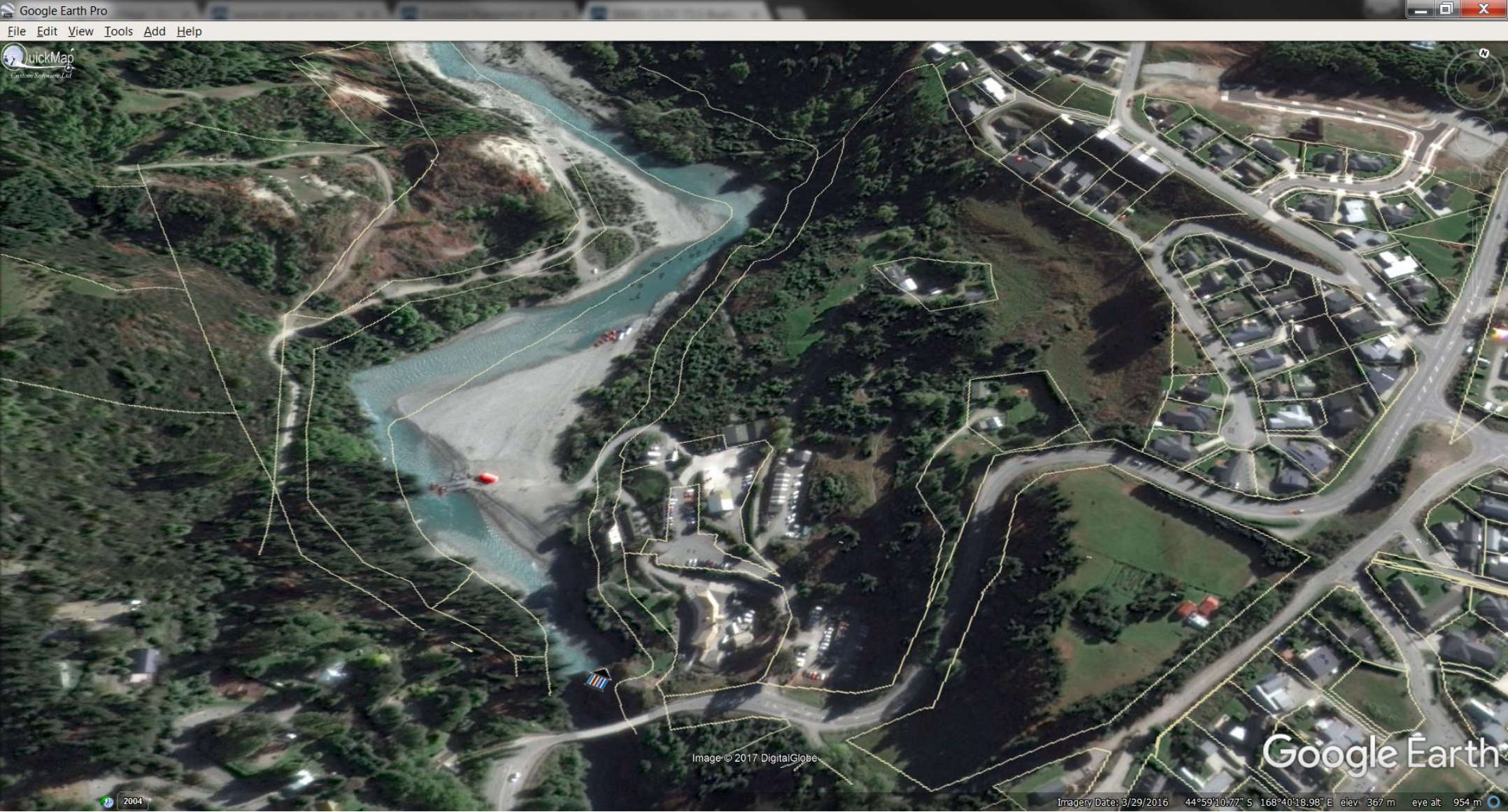


Evidence of Ben Farrell to QLDC, 22nd August 2017
Attachment 1: Aerial Image of Morning Star Reserve area



[Image Source: Google Earth and QuickMap, 2017]

Pt Section 148
XIX Shotover SD
OT18B/672
Majesty the Queen
Balance parcel, after part ...

X Shotov...

Pt Lot 1
DP 15145
142443,239370
Kahu Tours Limited
Kahu Trustees Limited
Balance parcel, following r...

Pt Section 3
SO 23901
8.3062
OT15B/790
Her Majesty The Queen
Recreation Reserve NZGZ 199...

Lot 2
DP 25724
0.3509
OT17D/409
S H Strain

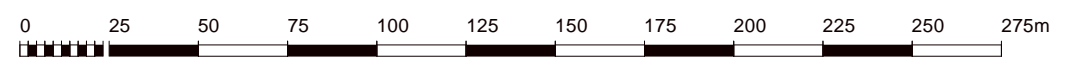
Lot 52
DP 338763
0.5578
Vesting on Deposit for Road

Section 4
SO 23901
0.4930
OT15B/790,163727
Her Majesty The Queen
Shotover Jet Queenstown Li...
Recreation Reserve NZGZ 199...

Pt Section 123
Bik XIX Shotover SD
2.0791
OT14C/1126
C J White

Section 1
SO 23662
0.5420
OT15B/790,466156
Her Majesty The Queen
Her Majesty the Queen

SECT 1
SO 322786



Any person wishing to rely on the information shown on this map must independently verify the information
Scale 1:2102 Topographical and Cadastral map derived from LINZ data. Printed: 8/08/2017 03:30.

