

# Scuttlebutt

THE QUEENSTOWN LAKES DISTRICT COUNCIL NEWSLETTER // JUNE / JULY 2023 // ISSUE 155

/ A PLACE TO CALL HOME /

## Winter Housing

### How you can help



With winter upon us there's a new online information hub for those affected by the housing crisis. Learn more, and find out about ways you can help, on page 2.

## INSIDE

02

WINTER MANAAKI

06

MILESTONE  
CELEBRATION ON  
MOUNT IRON

18

PROPOSED  
CHANGES TO  
ZONING

20

TRANSFORMING  
ORGANIC WASTE  
IN GLENORCHY



Tell us if you want to save paper and read Scuttlebutt online. See page 19 for details.



Scuttlebutt is printed on paper sourced from sustainably managed forests.



Scuttlebutt is recyclable. Please recycle me.

< Continued from cover >

# Winter Manaaki



## Do you have a spare room or perhaps a place to rent?

As the temperature drops we know there are people with immediate needs and others (including businesses) wanting to help ensure we all have a warm, dry and secure place to call home.

The current housing challenges in our district are well-documented and there's plenty happening to address it over the long term. But as more people arrive in town to enjoy the winter magic, there's naturally more demand for our already stretched accommodation.

Short-term fixes are not easy, and it will take a community effort to help alleviate the pressure.

This winter we (alongside many others) want to help ensure those in need know where to go for support, bring good people doing good things together and showcase our community's manaakitanga spirit.

## As part of this we've launched Winter Manaaki.

This is an online information hub containing links and resources for those affected by the housing crisis.

It also includes lots of great information for people who want to help, perhaps by offering a spare room or a place to live.

**Manaaki** means to support, take care of, give hospitality to, protect, look out for, show respect, generosity and care for others. It's the perfect word to capture our efforts as a community to help those in immediate need.

### WHAT ELSE HAVE WE TRIED?

For several weeks we were actively exploring options to set up a matching service between people who may have spare rooms, and businesses with workers who need accommodation. While we worked hard to get third party support the circumstances have been hugely challenging for everyone and unfortunately we weren't able to progress this in a way that would have balanced our duty of care for ratepayers and avoided us stepping beyond our remit.

## Every small action counts

### CHEAPER HOT SHOWERS

A hot shower is now cheaper for those going through difficult times. We've discounted the cost of a shower at Queenstown Events Centre and Wanaka Recreation Centre for the winter season. They're now just \$2 on weekdays between 11.00am-3.00pm and after 7.00pm, and on weekends after 3.00pm. \$5 at all other times. Under-18s are free.

### FREE WI-FI & CHARGING

Libraries are warm, safe public spaces where you're always welcome to charge your devices and relax. They provide access to free Wi-Fi as well as computer and printing services. You can join in a bunch of free programmes and chat to the friendly librarians about getting a library card that gives you access to heaps of free services.

If you'd like to read more about what's underway to improve access to housing in our district in the longer term, visit [qldc.govt.nz/your-council/improving-housing-outcomes](https://qldc.govt.nz/your-council/improving-housing-outcomes)

Check it out at [qldc.govt.nz/winter-manaaki](https://qldc.govt.nz/winter-manaaki)

# Wānaka Airport committee takes off

We recently welcomed Rob Phillips as independent chair of the newly formed Wānaka Airport Liaison Committee.

Formerly Chief Executive of Environment Southland, Rob has more than 22 years' experience in executive roles. He brings a strong strategic approach, open leadership style and a focus on achieving outcomes and recognising the importance of a strong organisational culture.



A requirement of the District Plan, the committee's responsibilities include reviewing complaints relating to airport operations or noise, assisting QLDC (in its role as regulator) and Queenstown Airport Corporation (which manages Wānaka Airport's day-to-day operations on behalf of QLDC under a management services agreement), and to communicate and engage with the community.

In addition to an appointee from QLDC still to be confirmed at time of writing, the other members of the committee are (in alphabetical order):



- > **Andrew Crawford** of Sounds Air, representing commercial airlines
- > **Don Grant** from the Wānaka Airport Users Group
- > **Jon Brooks** of Airways
- > **Juliet Breen** of Queenstown Airport Corporation
- > **Simon Telfer** representing the Wānaka-Upper Clutha Community Board.

When the weather closed in on the afternoon of the third day, Sven realised he would not be able to summit as planned. He dug a serviceable snow cave and was thawing his appendages when it was brought to his attention that the snow cave was a residential activity pursuant to Rule 21.4.9 of the Proposed District Plan and that he would require resource consent, building consent, an Environmental Management Plan and a DOC concession before he could spend the night.



Sven contacted **vivian+espie** who sorted out his consenting issues in no time, resulting in a peaceful nights sleep.

**vivian+espie**  
resource management and landscape planning  
(03) 441 4189 [www.vivianespie.co.nz](http://www.vivianespie.co.nz)



# Celebrating Matariki

Following the inaugural event in 2022, there'll be another public holiday this year to celebrate Matariki on Friday 14 July. In addition to the long-standing celebration on the Lake Wānaka foreshore there's also the return of Matariki Arrowtown Lights to enjoy.

## WĀNAKA

**When:** Friday 14 July  
2.00-7.00pm

**Where:** Dinosaur Park and Roys Bay Reserve

Kahu Youth Trust brings you a great family event that's sure to warm a cold winter's night! Spectators will be able to enjoy kapa haka, waiata (song), storytelling, fire displays, and the famous hangi (don't forget a koha donation).

**For more info:**  
Visit [kahuyouth.org/kahu-youth-events/](http://kahuyouth.org/kahu-youth-events/) or scan this QR code.



## ARROWTOWN

**When:** Friday 14 July  
4.00-10.00pm

**Where:** Buckingham Street

This event for all ages will showcase visual storytelling and stunning light projections. It will also include performances by waiatatia group Ngā Manu Hou, local kapa haka school groups and Prof. Brian Boyle sharing the wonders of the Otago night skies. This year there'll be extra kai/food stalls and fire pits to gather around and share stories.

 [arrowtown.com/our-town/events/matariki-arrowtown-lights/](http://arrowtown.com/our-town/events/matariki-arrowtown-lights/)

 @MatarikiArrowtownLights

 @MatarikiArrowtownLights

## WHAT IS MATARIKI?

Matariki is an abbreviation of 'Ngā Mata o te Ariki Tāwhirimātea' ('The Eyes of the God Tāwhirimātea') and refers to a large cluster of stars, also known as the Pleiades. The predawn rising of Matariki in the mid-winter sky marks the changing of the seasons and the beginning of the Māori New Year. It is a time for:

- > **Remembrance –**  
Honouring those we have lost since the last rising of Matariki
- > **Celebrating the present –**  
Gathering together to give thanks for what we have
- > **Looking to the future –**  
Looking forward to the promise of a new year



# Upper Clutha shuttle bus back for winter

Travelling between Lake Hāwea and Wānaka or around town?  
Catch the \$2.00 bus!

Council's Climate Action team has partnered with Community Networks/LINK Upper Clutha and Lake Wānaka Tourism to bring back the Community Shuttle service first trialed last year.

There's a brand new weekday timetable to suit full- or half-day commuting via Hāwea Flat plus five loops during the day connecting Wānaka CBD with the health centre, Three Parks, Anderson Road, Northlake and Albert Town.

Ditch the car and catch the shuttle – it's the easy, low cost, sustainable way to travel!

And don't forget to tell us what you think. Your feedback will help support the planning for future investment in public transport for the Upper Clutha.

Big thanks also to bus operator Yello and Otago Regional Council for supporting this trial that runs until 18 August.

For a timetable and bookings head to [communitynetworks.co.nz/shuttle-trial](https://communitynetworks.co.nz/shuttle-trial)



## HOUSEMART WINS 2 AWARDS!



**WINNER**  
Australasia  
Excellence in  
Customer Service  
*Housemart*

**WINNER**  
Australasia  
Property Manager  
of the Year  
*Megan Savers*

CONTACT OUR AWARD-WINNING TEAM  
TO MANAGE YOUR RENTAL PROPERTY

**HOUSEMART**  
HOW SMART

Ph: 03 442 3815  
[rentqt@housemart.co.nz](mailto:rentqt@housemart.co.nz)  
[www.housemart.co.nz](https://www.housemart.co.nz)

# Milestone celebration on Mount Iron

A fantastic turnout of over seventy people gathered at the base of Mount Iron at the end of May to celebrate nearly 100 hectares of land becoming the district's newest recreation reserve.

Members of the Cleugh family (previous owners and caretakers of the land) joined representatives from community groups, the Department of Conservation, Iwi and the Council to mark this significant milestone.

The sun shone as the site was blessed by Justin Tipa, Kaiwhakahaere

(Chair) of Te Rūnanga o Moeraki and representative of Kāi Tahu ki Tuawhenua. Mayor Glyn Lewers welcomed everyone before some words from the Cleugh family, whose youngest member Oscar later cut the ribbon with the Mayor. Councillor Quentin Smith told the story of how the seed of an idea turned into a reality and QLDC Community Services General Manager Kenneth Bailey spoke of how significant this legacy acquisition is for the community and thanked everyone for their collective efforts.

## WHAT'S NEXT FOR MOUNT IRON?

We'll be developing a Reserve Management Plan to guide how the area will be used, enjoyed, maintained and protected in the future. We'll need lots of community input as we develop this so keep your eyes peeled for details of how to get involved in the coming months.

Remember to stick to the tracks and follow signage when you're out exploring Mount Iron.

To keep in the loop, sign up to our Mount Iron newsletter at [www.qldc.govt.nz/mount-iron-acquisition](http://www.qldc.govt.nz/mount-iron-acquisition)

*Mayor Glyn Lewers and Oscar Cleugh-Gibb cut the ribbon as Kāi Tahu ki Tuawhenua representative Justin Tipa looks on.*







Council staff taking part in an EOC exercise

# Preparing for the worst

Ever wondered what would happen if a large-scale disaster hit our region?

If the worst were to occur, QLDC staff would spring into action alongside Emergency Management Otago (EMO) and form the district's Emergency Operations Centre (EOC).

In June, more than fifty Council staff took part in an EOC exercise to test our response capabilities to a hypothetical earthquake. Guided by the highly knowledgeable EMO team,

staff assumed their actual response roles including Controller, Intelligence, Logistics, Operations, Public Information, Welfare and Planning.

The exercise gave staff the opportunity to become familiar with the real-time pressure of an emergency response and went incredibly well (under the circumstances!) with EMO praising those involved for their initiative and focus.

## Are you ready?



Sign up to Otago Gets Ready, a two-way communication tool which helps people better prepare for emergencies and be more resilient when they occur: [otago.getsready.net](https://otago.getsready.net)

# Staying warm in a power cut

Have you thought about how your family might stay warm and cook hot food if the power goes out this winter?

## HERE ARE SOME HANDY TIPS!

- > **Warm up.** Snuggle up with blankets or sleeping bags. Put on layers of warm clothing and consider moving everyone into one room. Close the curtains, shut interior doors and block drafts at the base of doors with towels.
- > **Cooking.** If you have a BBQ or camping stove you can use that for cooking and boiling water. Make sure you cook outside or with suitable ventilation.
- > **Light up.** Make sure you know where to find a torch with batteries, ideally one for each member of your household.
- > **Tune in.** Have a solar or battery powered radio so you can keep up with the latest news and alerts.
- > **Fridge first.** If the power goes out eat the food from your fridge first, then your freezer. Then eat the food in the cupboard or your emergency kit.
- > **Look after each other.** Check on your neighbours, especially elderly or vulnerable people.

# From the Chambers

---

## 'WELCOME TO WĀNAKA' SIGNAGE

There are two road signs marking the entrance to Wānaka but both are missing the macron over the 'ā'. The New Zealand Geographic Board has confirmed that the official name of the town is now officially 'Wānaka' with a macron.

There is budget for signs maintenance but the signs are undamaged at present. Interestingly, someone has taken it upon themselves to update the signs and has painted a macron over the first 'ā' onto both signs, but a more permanent solution is needed.

The Wānaka-Upper Clutha Community Board will consider at its meeting on 22 June (around the time this issue of Scuttlebutt is due to appear) whether to make an official request to correct these very high profile and prominent signs.

## REMITTS TO LOCAL GOVERNMENT NEW ZEALAND

Local Government New Zealand (LGNZ) will hold its AGM on 26 July and a remit proposed by QLDC has been accepted for discussion at this meeting. If accepted, the remit will go on to direct LGNZ's policy advocacy.

The remit seeks to address the current joint and several liability approach to building defects which sees councils/Building Consent Authorities (BCAs) often being the only party left to compensate homeowners. Existing rules place the risk of insolvency or lack of insurance of one party onto other parties. Council's position is that requiring ratepayers to pay compensation where defendants are missing is unjust. This is a serious issue for QLDC, but it would also affect any council that has a BCA function. QLDC is committed to advocating for a change to the current regime.

## ANNUAL PLAN HEARINGS

The Council held a hearing of submissions to the 2023-2024 Annual Plan in the Lake Wānaka Centre on 22 May which demonstrated the huge range of interests and passions within our communities. More than 50 people spoke and more than 40 different groups were represented. Councillors were impressed with the enthusiasm and commitment demonstrated by all who spoke and it has been very challenging to decide on the priorities in the final plan. The Council will be asked to adopt the 2023-2024 Annual Plan at a meeting scheduled to take place on 29 June.

Next year will see the production of the 2024-2034 Long Term Plan and we are looking forward to hearing the community's views on the next ten years.

## NEW COUNCILLOR SWORN IN

The Council is now back to its full complement of elected members of 11 Councillors and one Mayor after the election of Councillor Melissa White in a by-election held on 5 May to fill a vacancy in the Arrowtown-Kawarau Ward. Councillor White was sworn in at the meeting held in Wānaka on 1 June. She will join the Planning & Strategy Committee and be the Council representative to the Lake Hayes and Shotover Country Community Association and the Gibbston Community Association.



# School holiday ideas

---

There's an action-packed schedule over the autumn holidays at Wānaka Recreation Centre.

Offering something for everyone. we've got sport, archery, a visit to the lavender farm and so much more. Spots are limited so book now!

Bookings are now online! Scan the QR code, or visit [qldc.govt.nz/shp](http://qldc.govt.nz/shp)

Looking for something to do at home? Try Beamafilm, Drama Online or the Bloomsbury Video Library – all free with your library card! Watch now at [codc-qldc.govt.nz/library-online/films](http://codc-qldc.govt.nz/library-online/films)



# Cool reminders about hot ashes

---

Who doesn't love a roaring fire on a frosty night, but take care when disposing of the ashes.

Embers can remain hot long after the flames have died down, and can start fires in rubbish bins, collection trucks, or the landfill. Fire and Emergency New Zealand recommends ash is put into a metal bucket and soaked with water. Leave it to cool for at least five days before bagging it and disposing of it in the rubbish.

Cold ash can also be spread on a garden as a fertiliser. Just make sure you're not burning treated wood.



**RESET**  
URBAN DESIGN

Urban Design and Landscape Architecture

[www.reseturban.co.nz](http://www.reseturban.co.nz)

# ‘Postcards’ from recent events

We thought it would be fun to round-up some recent events around the district with a few photos to tell the story.



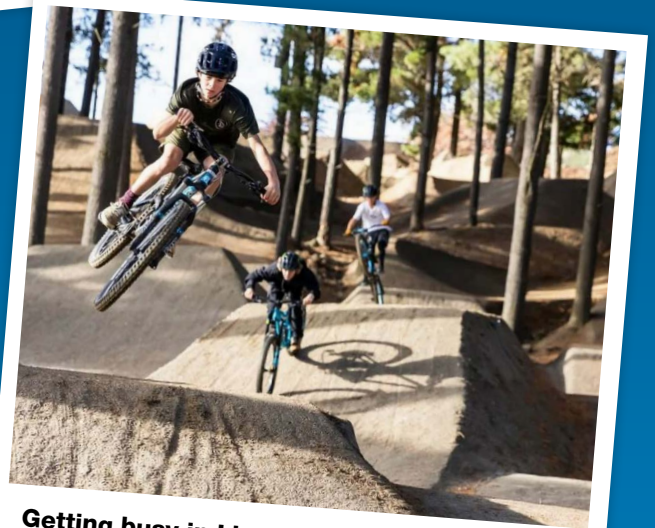
## Harvesting ideas about food resilience

Following its survey that revealed more than 75% of us are concerned about our district's food resiliency, Wao Aotearoa hosted a hui at Wānaka Community Hub to dig a little deeper and begin growing a collaborative plan for a sustainable food network. Around 40 people joined expert guest speakers for a compelling, productive and fun session that provided opportunities for all to learn and share.



## Reposting about Arrowtown's history

Arrowtown's unique history as a Tohu Whenua site has been recognised by a second post. Next time you're at the Library Green why not take a snap with your phone and post about the new post (#TohuWhenua) that bookends the town's original one located at the Chinese Settlement. Meaning 'landmark', Tohu Whenua is a national programme that acknowledges memories of the land, marking places made significant by our forebears and telling their stories – [tohuwhenua.nz](http://tohuwhenua.nz)



## Getting busy in Lizzy Woods

The revamped Lismore Jump Park overlooking Wānaka has been packed with eager bikers since opening in May. The result of many hours of mahi from pro trail builders and Bike Wānaka volunteers supported by many local businesses and organisations including QLDC, the new facility is a brilliant addition to the local biking network. *Image credit – Ray Tiddy.*





**A right royal tree planting**

A tōtara sapling planted in Te Kararo Queenstown Gardens marked the beginning of the reign of His Majesty King Charles III and The Queen Consort. Local dignitaries, council staff and members of the community gathered for this memorable event that was crowned with a traditional British high tea. Here are (L to R) Mayor Glyn Lewers, MP for Southland Joseph Mooney and QLDC Community Services General Manager Ken Bailey admiring their spadework.



**Remembering ANZAC Day**

This year's ANZAC Day ceremonies were once again poignant opportunities for our local communities to gather, reflect and remember. To mark the occasion, our Parks and Reserves team and contractors Delta painted a giant poppy on both Queenstown Recreation Ground and Wānaka Showgrounds. Lake Hawea's dawn service saw a flypast by three vintage Tiger Moths and a lone piper saluting the flag at half-mast, as photographed by Councillor Quentin Smith.



# Wānaka Play Space open for fun!

---

The new play space at Wānaka Recreation Centre is officially open!

The opening event was heaps of fun with more than 130 people chomping their way through 300 sizzling sausages, getting their faces painted and lapping up the sunshine and activities. Thank you to everyone who came along and celebrated the day with us, as well as all those who helped get this awesome project off the ground: QLDC Libraries, M!NT Trust, Wānaka Community Workshop MenShed and Mount Aspiring College's Students in the Community.

We hope to do more events here in the future, so watch this (play) space!

The play space is now open for everyone to enjoy.

Pick up a book from the Lilliput Library!

Play a game of table tennis or enjoy reading in our sheltered area.



*Fun and games at the opening event.*

# Please don't feed the ducks

---

Feeding ducks encourages them to gather in large numbers, which results in a lot of duck poo!

This can cause nasty things like E. coli, affect water quality and make it unsafe to swim in the lake.



Protect water quality and help the ducks by letting them feed naturally.



# Views on rural landscapes

---

What do the Upper Clutha's rural landscapes mean to you? Which aspects do you think should be protected, maintained or enhanced?

Last year we asked for your views on what you valued most about a range of priority landscapes across the district. The feedback helped us draft 'landscape schedules' – the values and elements of an area that people care about – to be included in the District Plan.

Learn more and chat with Council staff at our community drop-in session:

**Tuesday 4 July, 4.00-7.00pm at the Lake Wānaka Centre**

**Airey** | Engineering  
Ingenuity

Airey Consultants Ltd building a better future by delivering excellence in  
Civil, Structural and Fire  
Engineering Design

Queenstown Office  
03 442 3101 | [queenstown@aireys.co.nz](mailto:queenstown@aireys.co.nz) | [www.aireys.co.nz](http://www.aireys.co.nz)





Know how to read your tyre and get the right chains for your car. Your tyre size will be printed on the side. Use the **Snowsweat online calculator** to find the right size chains for your vehicle.

# KNOW BEFORE YOU GO

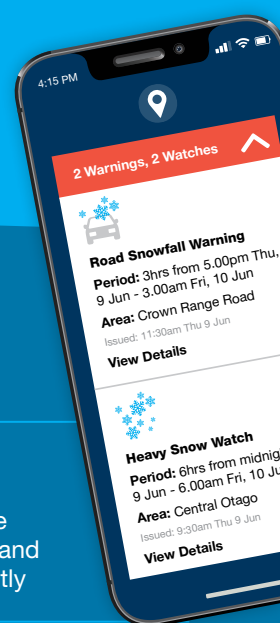
**THIS WINTER**



Grab a free **ice scraper** from QLDC offices, libraries and rec centres. Don't use hot water to clear your windscreen!

Whether you're an ace behind the wheel or haven't had much experience driving in ice and snow, there's plenty you can do to keep yourself and others as safe as possible when you're out on the roads this winter. **Here are some top tips:**

- |  |  |  |   |
|--|--|--|---|
| <p><b>1</b></p> <p>Double your following distance and don't overtake grit trucks</p>   | <p><b>2</b></p> <p>Plan extra travel time and slow down</p>  | <p><b>3</b></p> <p>Take extra care on bridge surfaces and when driving through shaded areas</p>  | <p><b>4</b></p> <p>Accelerate smoothly and brake gently</p> |
| <p><b>5</b></p> <p>Carry chains in your vehicle wherever you go, and know how and when to fit them. If you use Crown Range Road regularly, chains should be carried at all times</p> | <p><b>6</b></p> <p>If it's one of those really cold, snowy or icy days, sometimes it's just better to stay home and only travel if it's absolutely necessary</p> | <p><b>7</b></p> <p>Check road conditions before you leave the house, and make sure all vehicle windows are free of snow and ice before driving</p> |   |



Sign up to our Winter Road Reports at [www.qldc.govt.nz/winter-road-reports](http://www.qldc.govt.nz/winter-road-reports) and you'll get an email every morning before 7.00am with a heads up on what to expect.

Sign up to our community text alerts at [www.qldc.govt.nz/text-alerts](http://www.qldc.govt.nz/text-alerts) and we'll send you a txt message about any road closures due to snow or black ice warnings.



# Gritty Gritty Bang Bang!

More than 200 suggestions from members of the public and seven days of voting helped name four grit/plough and CMA\* trucks maintaining local roads this winter.

If you haven't already spotted them, these trucks should be out and about emblazoned with their new nicknames. A big thank you to everyone who joined in the fun making a suggestion and voting for your favourite.

\* *Calcium Magnesium Acetate* – a biodegradable de-icing agent we spray on roads which works down to -7°C.



**GRITTY GRITTY  
BANG BANG**

534 votes  
(grit/plough truck)



**THE CROWNED  
RANGER**

270 votes  
(grit/plough truck)



**THE BIG  
LEFLOWSKI**

179 votes  
(grit/plough truck)



**FAST AND  
FLURRYOUS**

174 votes  
(CMA truck)



## Regular timetables are back



For up-to-date bus information,  
check [orc.govt.nz/orbusQT](http://orc.govt.nz/orbusQT)



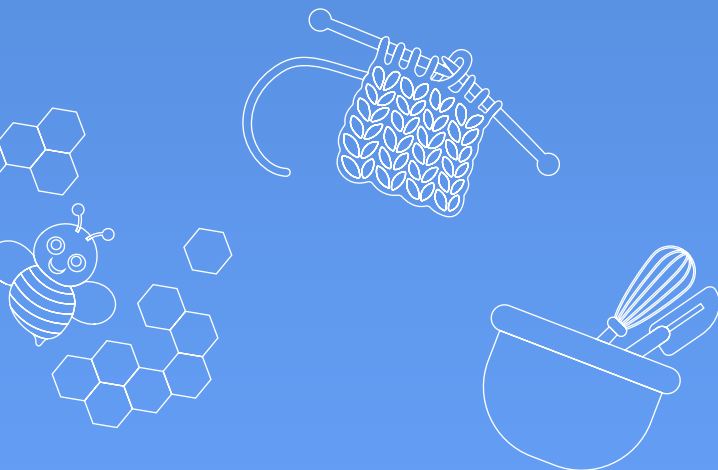
# WINTERDAZE

Wellbeing, community and connection!

Join us for a series of uplifting free events that will warm your spirits and bring our community closer together. Winterdaze is a collaboration between local organisations and QLDC dedicated to promoting wellness and joy during the colder months.

From board game nights to creative workshops, speed dating with a twist to mindful meditation sessions, Winterdaze has something for everyone. Get ready to embark on a journey of wellness and self-discovery!

The fun runs through until August. Don't miss out on these awesome opportunities to learn, connect and have fun.



Stay tuned to our social media channels for more details and join us in making this winter season unforgettable.



# 2023 Māori Electoral Option – Te Kōwhiringa Pōti Māori

He mana tō te kōwhiri – your choice has mana.

The Māori Electoral Option is a choice for Māori about which electoral roll they want to be on: the Māori roll or the general roll.

It's an important decision. The roll you choose decides which electorate you vote in – and what candidates you can choose from to represent you and your rohe in parliamentary and local elections.

If you want to change the roll you're on for this year's General Election, you need to do it before midnight 13 July.

It's quick and easy to find more information about the Māori Electoral Option or to change rolls at [vote.nz](https://vote.nz) or call 0800 36 76 56.





# Testing private water bores

Did you know there is a known risk of naturally occurring arsenic in bore water throughout the Queenstown Lakes District? Present in low levels in soil, rocks, air and water, people may consume small amounts of arsenic every day for a long time without any obvious health effects.

However, consuming large amounts of arsenic in drinking water can be harmful to health, and consuming moderate amounts of arsenic every day for many years may also cause long term health effects.

That's why it's really important owners of private drinking water supplies monitor their water and maintain and treat their supply.

And if you supply water to more than one household, you have a duty of care to provide safe drinking water to the communities or people who rely on your supply.

If you don't already undertake regular testing, please get your water supply tested or contact the person you receive water from to do so.

A list of IANZ accredited laboratories that can test your water can be found on the Taumata Arowai website: [taumataarowai.govt.nz](http://taumataarowai.govt.nz)

Following a report in April a slightly elevated level of arsenic in one drinking bore in Kingston, we'd like to thank all those in the area who have since tested their water supplies or continued their regular testing. If you live in Kingston and have not organised a test yet, as a precaution we recommend getting your drinking water supply tested for arsenic.

More details on private water supplies are available at [qldc.govt.nz/services/privatedrinkingwatersupply](http://qldc.govt.nz/services/privatedrinkingwatersupply)



# Proposed changes to zoning, density and heights

---

A variation that will allow for changes to the zoning and associated rules and standards of some urban land in the district was recently endorsed by Councillors for notification.

The proposed Urban Intensification Variation responds to Policy 5 of central government's National Policy Statement on Urban Development 2020 (NPS-UD), a directive to ensure urban environments are well-functioning and meet the changing needs of our communities.

Our district is under considerable growth pressure with high demand for a range of housing types. The proposed variation will enable intensification in suitable locations across the district including near commercial activities, or areas with existing

or planned access to frequent public transport services.

It will also provide for increased densities and heights of buildings in existing urban environments, allowing for the development of smaller and attached-style housing near public infrastructure.

Aiming to foster great places to live for everyone, the variation will help to provide a variety of housing choices and encourage a greater range of more affordable options. The proposed changes will also enable growth through intensification instead of urban sprawl, making it easier for more people to live in an appropriate location. And with that, services like public transport that supply those communities will be more efficient, and better utilised.

Provisions are included in the proposed variation to ensure appropriate residential amenity is maintained within intensification areas, that any proposed development could be appropriately serviced, and stormwater runoff addressed.

The proposed Urban Intensification Variation marks the implementation of several outcomes and objectives identified across the Queenstown Lakes Spatial Plan 2021, the Joint Housing Action Plan, and the Climate and Biodiversity Plan 2022-2025. These plans collectively determine how the district will

grow, create well-designed neighbourhoods and deliver integrated spatial planning decisions on land use, urban development, transport planning and natural corridor networks which help to reduce emissions, restore indigenous biodiversity, and improve climate change resilience across the district.

Find out more and have your say on the proposed Urban Intensification Variation on our website. Details on the public submissions process will be shared soon – watch this space!

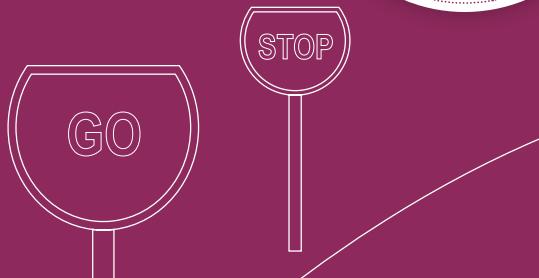
# Gorge Road open for winter

Following eight months of extensive work on underground services as part of the arterial road project, Gorge Road in Queenstown reopened for the ski season in mid-June.

There will be isolated pockets of work being completed at times requiring stop/go but two-way traffic will always be maintained at peak times.

The team will begin rebuilding the road, kerb and channel, and landscaping in spring. We'll keep you updated on timing for this work.

Go to [qldc.govt.nz/ka-huanui-a-tahuna](http://qldc.govt.nz/ka-huanui-a-tahuna) or scan here for regular updates:



# Scuttlebutt online

Scuttlebutt is distributed to our local residents and out-of-town ratepayers six times a year. That's a lot of paper and postage. We're no longer mailing Scuttlebutt to overseas ratepayers. If this means you, and you still want to receive it, you need to switch to our email distribution list. Just email [email\\_services@qldc.govt.nz](mailto:email_services@qldc.govt.nz) with the word "newsletter" as the subject and be sure to include your name, overseas postal address and the address of your property in the district so we can cross you off the mailing list. We'll send you a website link to view/download all future Scuttlebutts instead. Anyone can do this even if you live in NZ. You'll be helping us reduce the number of copies we print and distribute. And remember, every issue of Scuttlebutt is also on our website [qldc.govt.nz/scuttlebutt](http://qldc.govt.nz/scuttlebutt)

**HOLIDAY HOME MANAGEMENT**  
*Sorted.*

We offer all-round service from marketing, guest interaction, cleaning to property maintenance, giving our clients a complete handsfree, stress free experience. Contact us for a free assessment of your property's rental potential.

Ask us about our latest referral program.

**LUXE STAY**  
Queenstown • New Zealand

+64 21 126 3900 | [hello@luxestay.co.nz](mailto:hello@luxestay.co.nz) | [www.luxestay.co.nz](http://www.luxestay.co.nz)



# Glenorchy goodness returns to earth

A community composting facility has opened in Glenorchy allowing residents, tourists and hospitality businesses to convert food scraps and other organic waste into compost that will put all that goodness back into the soil.

QLDC and the Ministry for the Environment are co-funding a 12-month pilot project that will be operated by Zero Waste Glenorchy in partnership with Hewland Projects and The Headwaters.



The initial pilot will incorporate drop-off and collection options as well as educational opportunities for visitors and the community. The composting system itself is fully enclosed in a converted shipping container enabling year-round operation (the same system is successfully used in places like Alaska, Norway and Canada).

A recent launch event showcased the system in place and provided an opportunity for the community to learn about the benefits of composting.

Kerbside collection of composting material will begin later this year using a cargo e-bike with custom-built trailer to transport wheelie bins.



FIND OUT MORE AT:

[zerowasteglenorchy.com/pages/composting-information](http://zerowasteglenorchy.com/pages/composting-information)

The project supports Glenorchy's Shaping our Futures Environment vision of becoming a community recognised for conservation, environmental and sustainability leadership, with a goal of zero waste and 100% capture and recycling of nutrients and materials.

It's in line with Council's waste minimisation goals of keeping organic material out of landfill and also supporting community composting efforts as per the Climate and Biodiversity Plan.

*Here are some images taken at the public launch event.*

# Imagine a place where creativity thrives

We've teamed up with Three Lakes Cultural Trust to develop an arts, culture and heritage strategy for our district with valuable input from the local community captured during six recent district-wide hui.

A well-informed strategy will help set a shared vision and commitment to the sector. It will provide guidance for what should be preserved, maintained, celebrated, as well as outlining a roadmap of what we need to do to achieve this.

Arts, culture, heritage and creativity are essential for healthy, vibrant communities where people want to live, work and raise their families.

To be part of the conversation, keep an eye out for the draft strategy that will be shared later this year for public feedback.

Along with the trust, we'd love to hear from as many different voices as possible.

For further info head to [www.tewahitoinz](http://www.tewahitoinz)



**DIGUY**  
PRODUCT ASSEMBLY

**KITSET & FLATPACK ASSEMBLY SPECIALIST**

- Garden Sheds
- Furniture
- Tunnel Houses
- Pergolas
- Trampolines
- BBQ's

021 1414 513 | [diguy.co.nz](http://diguy.co.nz) | [nick@diguy.co.nz](mailto:nick@diguy.co.nz)

# Saying goodbye to plastics

The government is phasing out and banning the use of certain hard-to-recycle plastics and single-use items.

Plastic is one of our greatest environmental challenges because it regularly ends up as waste in our landfills, our moana and whenua. Hard-to-recycle packaging and products can interfere with our recycling systems and are often used only once before being disposed of.

Shifting away from them will help reduce plastic waste, improve our recycling systems and protect our environment. This shift is also part of a wider ambition to move Aotearoa New Zealand towards a low-emissions, low-waste economy.

QLDC was proud to make a submission to the government on behalf of the district, which strongly supported the phase out of these types of plastics.

## WHAT ITEMS ARE BANNED FROM 1 JULY?

- > After 1 July the manufacture, sale or distribution of single-use plastic produce bags, and plastic plates, bowls and cutlery will be banned.
- > The general sale of plastic straws will also be restricted. Some people with disabilities or a health condition need plastic straws to drink, so pharmacies, hospitality venues and health and disability services are still allowed to sell and provide plastic straws to people who need them. Plastic straws can also still be purchased from online retailers.
- > Plastic produce labels must begin the transition to become fully home compostable by 2025. This transition period will allow time for improvements to compostable label technology.

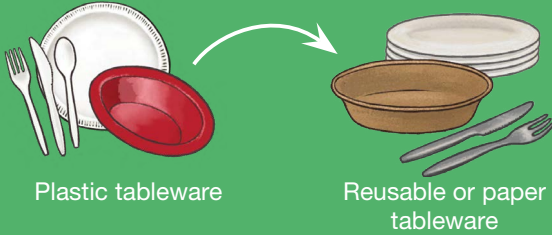
## WHO DOES THE BAN APPLY TO?

The ban applies to all businesses and organisations. Key sectors include:

- > Retail and hospitality businesses, such as cafes, bars, restaurants, hotels, takeaway food outlets, party and discount stores, supermarkets, market stalls, festivals and events.
- > Suppliers, such as manufacturers, distributors, importers, wholesalers, and online marketplaces.
- > Organisations and not-for-profits, such as health and community services, charities, community groups, sporting clubs, schools, and government bodies



## SO, WHAT ARE THE ALTERNATIVES?



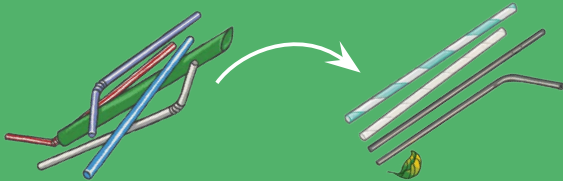
Plastic tableware

Reusable or paper tableware



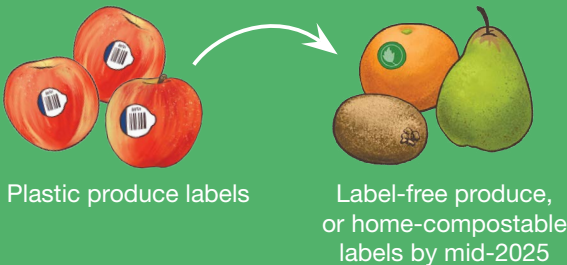
Plastic produce bags

Reusable, paper bag, or no bag



Plastic drinking straws

Reusable or paper straws, or no straw



Plastic produce labels

Label-free produce, or home-compostable labels by mid-2025

Alternatives to these single-use plastic items are widely available – here are some ideas. Individuals and businesses looking for alternatives to the items being phased out should consider reusable or recyclable alternatives first.



For further information on the bans, the alternatives to these and supporting resources, visit the Ministry of Environment's website: [environment.govt.nz/plastics](https://environment.govt.nz/plastics)

# 'Regenerating' the Spatial Plan

## WHERE SHOULD WE GROW?

We're in the early stages of developing the Spatial Plan 2024 Gen 2.0. It builds on our earlier work completed in 2021, and will become part of our Future Development Strategy – a government requirement for all high-growth councils in Aotearoa New Zealand.

One of the first steps we need to take is a public 'call for sites'. It's your opportunity to suggest areas that could be considered for future residential and business growth, or areas you consider inappropriate for urban development or warrant greater protection.

For more info head to [letstalk.qldc.govt.nz](https://letstalk.qldc.govt.nz) and have your say before 16 July.

## What a recent client had to say...



“We found Olivia exceptionally outstanding to work with. Olivia took the initiative from the outset, from organising staging to extra detail in marketing. The communication throughout the sale process was over and above expectations. Looking forward to marketing through Olivia again in the near future.”

CHRIS DINAN

Olivia Owen

021 170 1489 [olivia.owen@nzsir.com](mailto:olivia.owen@nzsir.com)

New Zealand | Sotheby's  
INTERNATIONAL REALTY

Each Office is Independently Owned and Operated. Browns Real Estate Limited (licensed under the REAA 2008) MREINZ.



# Let's talk

Register and find full details of these projects and more at [letstalk.qldc.govt.nz](http://letstalk.qldc.govt.nz)



## An update on key consultation topics happening in 2023.

We're in the full swing of another busy year with plenty of topics and projects we'd love your input on. Get the latest status update on key consultation topics here. And remember, the best way to stay informed on what's coming up for consultation is to register on Let's Talk – it's easy, head to [letstalk.qldc.govt.nz](http://letstalk.qldc.govt.nz)

### CURRENT CONSULTATIONS

#### SPATIAL PLAN 2024 GEN 2.0

A call for potential urban development sites to feed into a Future Development Strategy for the district.

**Status:**  
Call for sites closes on 16 July.

#### DRAFT ANNUAL PLAN 2023-2024

The budget for the year. Key projects prioritisation and what it means for rates and charges.

**Status:**  
Finalised plan to be presented to Full Council for adoption on 29 June.

#### QUEENSTOWN AIRPORT MASTERPLAN

A proposed series of infrastructure improvements over the next decade.

**Status:**  
Feedback closed on 23 June; submissions being reviewed.

#### JOINT HOUSING ACTION PLAN

A proposed programme of work to tackle the district's housing needs.

**Status:**  
Feedback closed on 9 June; submissions being reviewed.

#### TE PŪTAHI LADIES MILE DISTRICT PLAN VARIATION

Proposal to introduce a new special purpose zone to implement the Te Pūtahi Ladies Mile Masterplan.

**Status:**  
Submissions closed on 9 June; hearing to be scheduled.

#### DRAFT ACTIVITIES AND ALCOHOL RESTRICTIONS IN PUBLIC PLACES BYLAWS

An updated bylaw aimed at protecting the public from nuisance.

**Status:**  
Finalised bylaws to be considered by Full Council in August.

### UPDATES ON RECENT CONSULTATIONS

### WHAT'S COMING UP

MOUNT IRON RESERVE MANAGEMENT PLAN

LISMORE PARK DEVELOPMENT PLAN

PROPOSED URBAN INTENSIFICATION VARIATION

WELCOMING COMMUNITIES I TE WAHORO A KI NGĀ HAPORI WELCOMING PLAN 2023/26

PUBLIC TRANSPORT BUSINESS CASE (VIA WAY TO GO GROUP)

DISTRICT-WIDE SPEED REVIEW

CEMETERIES BYLAW REVIEW

WATERWAYS SAFETY AND NAVIGATION BYLAW REVIEW

## QLDC & SERVICE CENTRES

### Queenstown Office:

10 Gorge Road  
Private Bag 50072, Queenstown  
Phone: 03 441 0499

### Wānaka Office:

47 Ardmore Street, Wānaka  
Phone: 03 443 0024

E-mail: [services@qldc.govt.nz](mailto:services@qldc.govt.nz)  
[www.qldc.govt.nz](http://www.qldc.govt.nz)

### Office Hours:

Weekdays 8.00am – 5.00pm

## QUEENSTOWN EVENTS CENTRE AND VENUES

Arrowtown Athenaeum Hall  
Queenstown Memorial Hall  
Lake Hayes Pavilion  
Lake Wānaka Centre  
Luggate Memorial Centre  
Alpine Aqualand  
Alpine Health & Fitness  
Sports fields  
Phone: 03 450 9005

## WĀNAKA RECREATION CENTRE

Wānaka Pool  
Indoor Courts  
Phone: 03 443 9334

## TRANSFER STATIONS

**Wakatipu:** 110 Glenda Drive  
Frankton Industrial Area  
Phone: 03 348 5126  
**Upper Clutha:** Cnr of Ballantyne & Riverbank Roads  
Phone: 03 348 6125

## HARBOURMASTER

Report non-compliance of waterway rules by phone **03 441 0499** or email [services@qldc.govt.nz](mailto:services@qldc.govt.nz)

In an emergency on the water always **call 111**

## LIBRARIES

For library opening hours and locations please head to [codc-qldc.govt.nz](http://codc-qldc.govt.nz)

## EDITORIAL & ADVERTISING CONTACT

Scuttlebutt is published bi-monthly by Queenstown Lakes District Council to inform ratepayers and residents of council activities.

Sam White ✉ [sam.white@qldc.govt.nz](mailto:sam.white@qldc.govt.nz)  
Feedback and ideas are welcome.