

# Appendix B

QLDC RV Zone – landscape assessment

## Arcadia RV Zone – maps and photographs

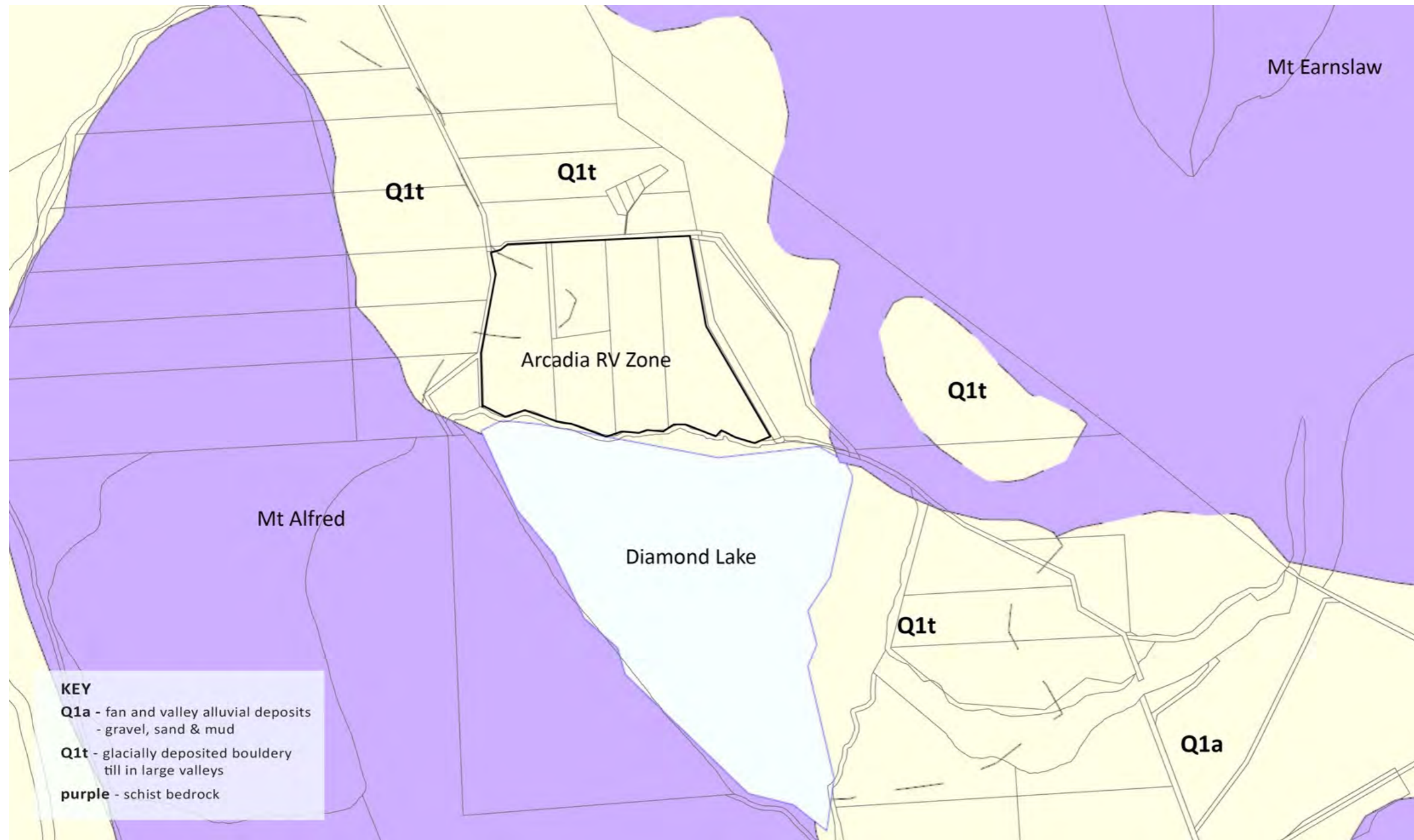


Figure 1: Geology in the vicinity of the Arcadia RV Zone (source QLDC GIS & GNS 1: 250.000 Wakatipu Geological Map)





Figure 2: Arcadia RV Zone immediate context





**Photograph 1:** View north-west from Glenorchy-Paradise Road toward Diamond Lake and Arcadia RV Zone (photograph taken at 50mm lens equivalent at 11.00am on 21-02-19)





**Photograph 2:** View south from Glenorchy-Paradise Road toward Diamond Lake with Arcadia RV Zone in foreground (photograph taken at 50mm lens equivalent at 10.10am on 21-02-19)



**Photograph 3:** View to Arcadia House from Glenorchy-Paradise Road (photograph taken at 85mm lens equivalent)



**Photograph 4:** View from Glenorchy-Paradise Road over north-west corner of RV Zone with Paradise Trust Annexe visible on right (panorama stitched from 2 photographs taken at 50mm lens equivalent at 10.30am on 21-02-19)





Figure 3: Landscape sensitivity of Arcadia RV Zone



# Arthurs Point RV Zone – maps and photographs

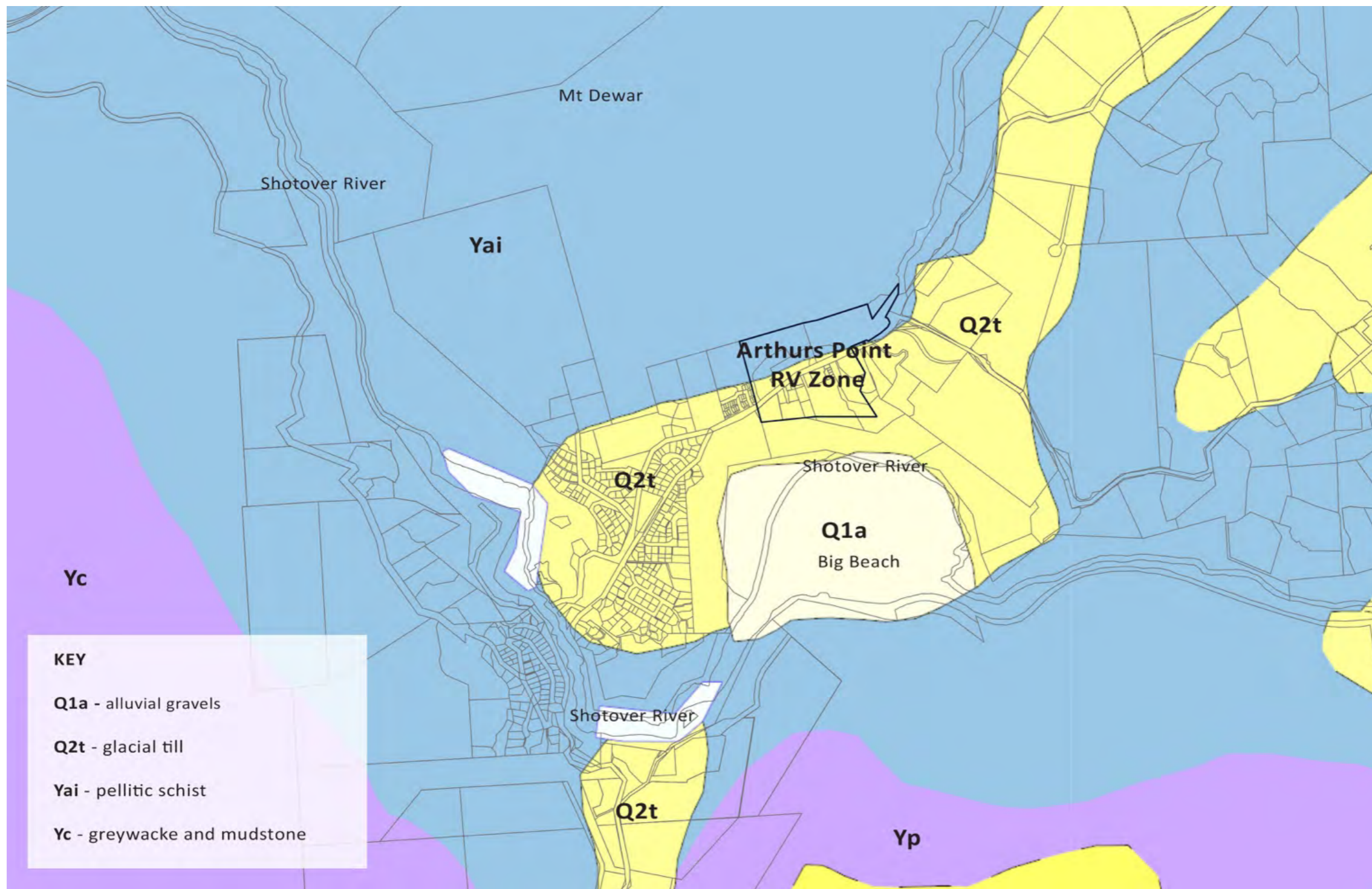


Figure 4: Geology in the vicinity of the Arthurs Point RV Zone (source QLDC GIS & GNS 1: 250.000 Wakatipu Geological Map)



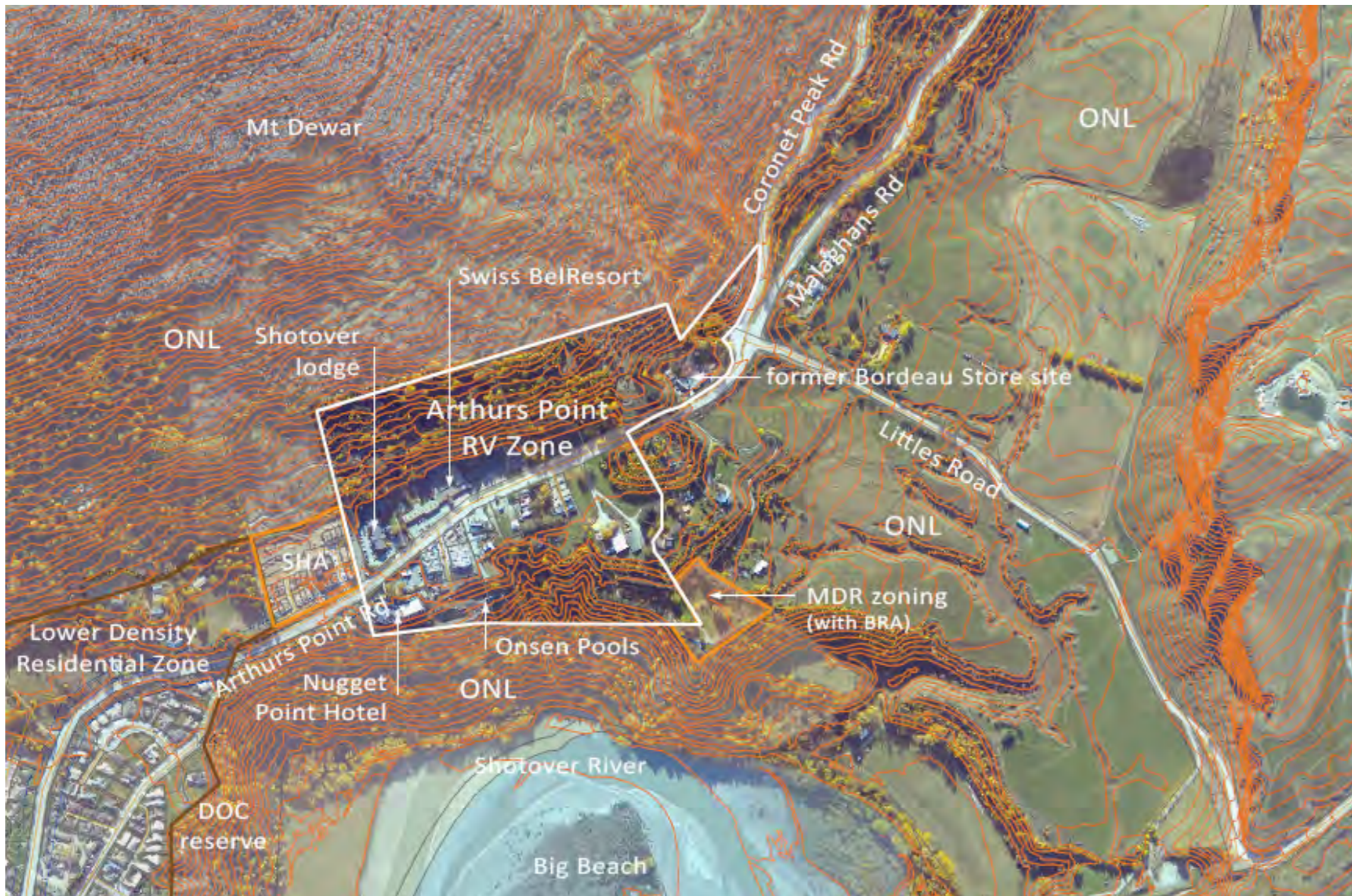


Figure 5: Arthurs Point Zone features and immediate context





**Photograph 5:** View from Littles Road towards Bowen Peak, Arthurs Point and Mt Dewar (panorama stitched from 2 photographs taken at 50mm lens equivalent at 12.55pm on 22-02-19)



**Photograph 6:** Multistorey apartments within the zone (photograph taken at 50mm lens equivalent on 22-02-19)



**Photograph 7:** View towards Swiss BelResort and vegetated part of zone on Mt Dewar (photograph taken at 50mm lens equivalent on 22-02-19)





**Photograph 8:** View over Onsen Pools extension to Shotover River (photograph taken at 50mm lens equivalent on 22-02-19)



**Photograph 9:** Commercial development within the zone (photograph taken at 50mm lens equivalent on 22-02-19)





Figure 6: Landscape sensitivity of Arthurs Point RV Zone



# Blanket Bay RV Zone – maps and photographs

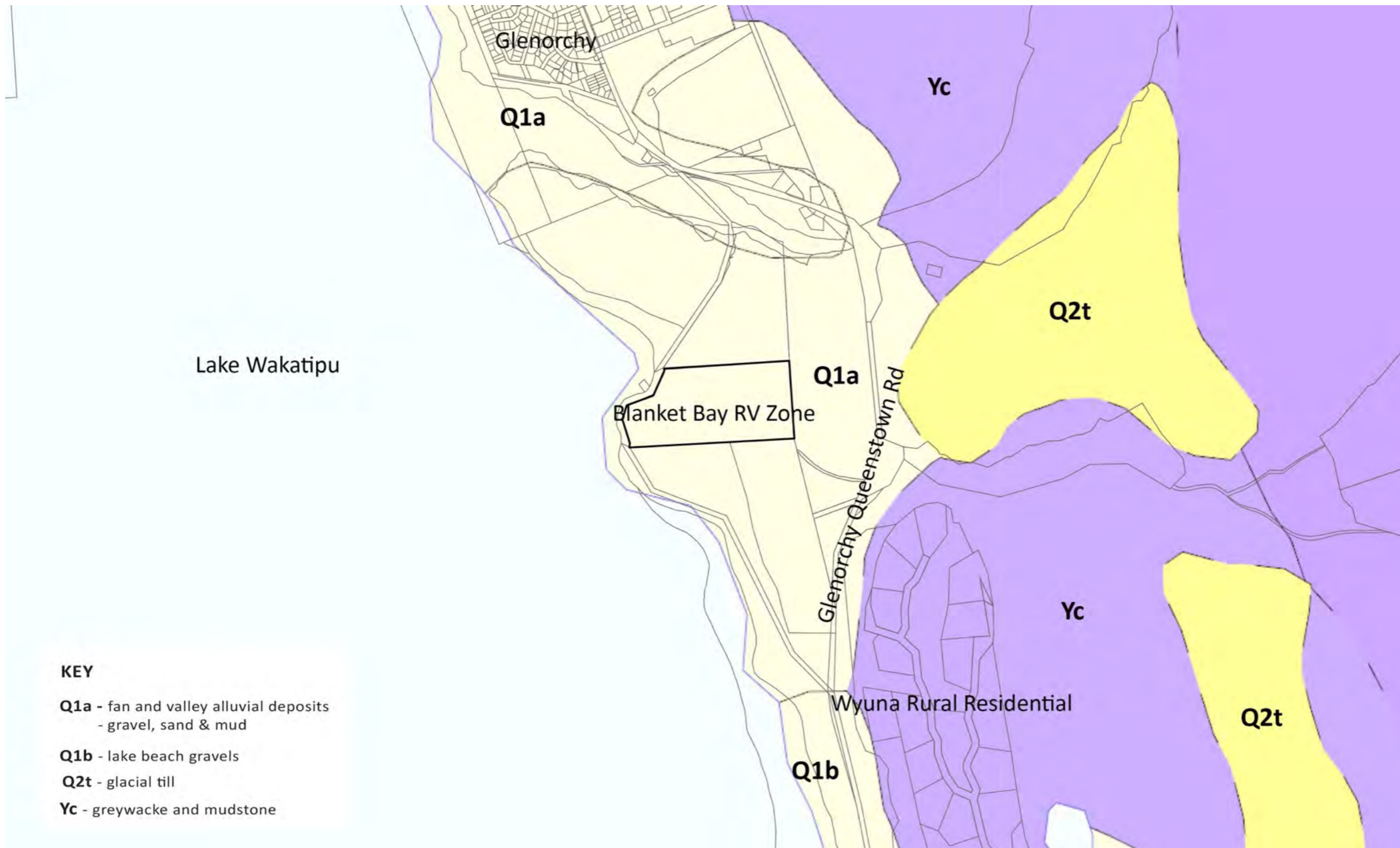


Figure 7: Geology in the vicinity of the Blanket Bay RV Zone (source QLDC GIS & GNS 1: 250,000 Wakatipu Geological Map)





Figure 8: Existing features and immediate context





**Photograph 10:** View to Blanket Bay, jetty and foreshore from south of Blanket Bay Lodge (panorama stitched from 2 photographs taken at 50mm lens equivalent at 11.30am on 21-02-19)



**Photograph 11:** Regenerating shrubland in SW corner of RV Zone (photograph taken at 50mm lens equivalent at 11.40am on 21-02-19)



**Photograph 12:** Stone Creek escarpments within the RV Zone (photograph taken at 50mm lens equivalent at 11.47am on 21-02-19)





Figure 9: Blanket Bay RV Zone landscape sensitivity.



## Cardrona RV Zone – maps and photographs

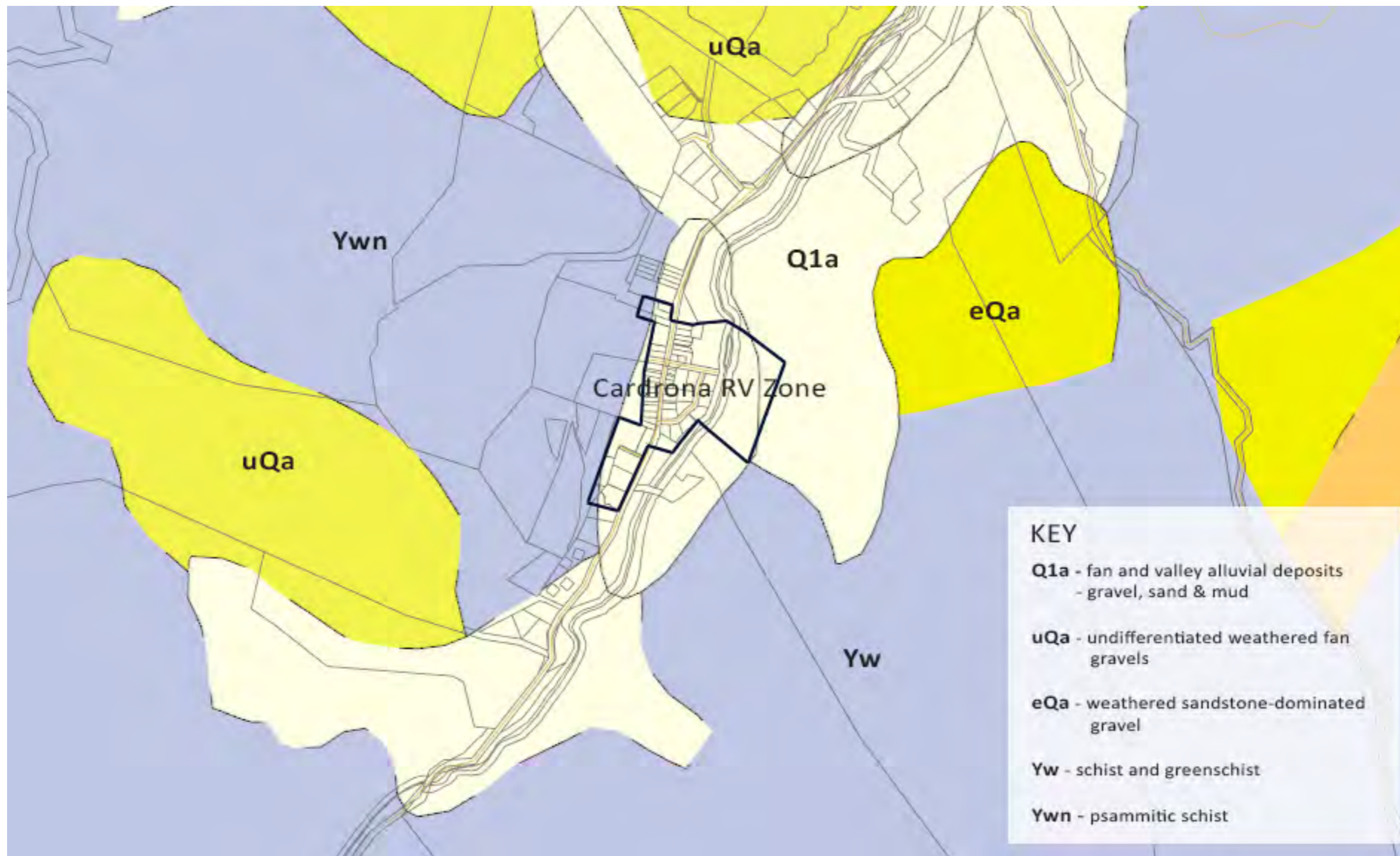


Figure 10: Geology in the vicinity of the Cardrona RV Zone (source QLDC GIS & GNS 1: 250,000 Wakatipu Geological Map)





Figure 11: Existing features and immediate context





**Photograph 13:** Cardrona Hotel, associated historic buildings and mature trees in the centre of the RV Zone (panorama stitched from 2 photographs taken at 9.30am on 22-02-19)



**Photograph 14:** View towards weedy vegetation on vacant lot in north-western part of the RV Zone that contains an unnamed water course (panorama stitched from 2 photographs taken at 50mm lens equivalent at 9.45am on 22-02-19)





**Photograph 15:** Vacant residential subdivision west of Cardrona River (panorama stitched from 3 photographs taken at 10.10am on 22-02-19)



**Photograph 16:** View east across Cardrona River to eastern part of RV Zone and base of eroded escarpment (panorama stitched from 3 photographs taken at 50mm lens equivalent at 10.15am on 22-02-19)



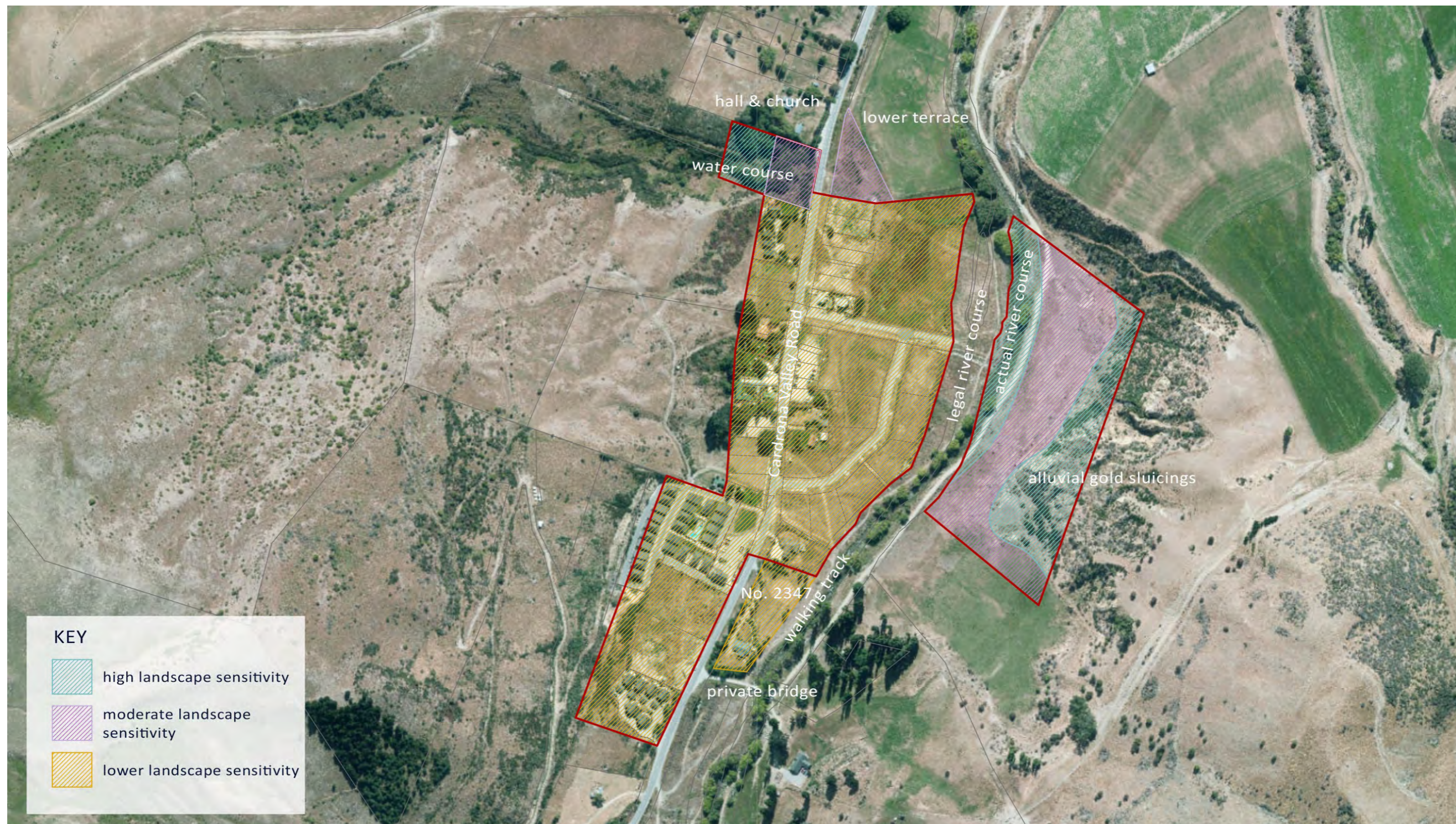


Figure 12: Cardrona RV Zone landscape sensitivity.



# Cecil Peak RV Zone – maps and photographs

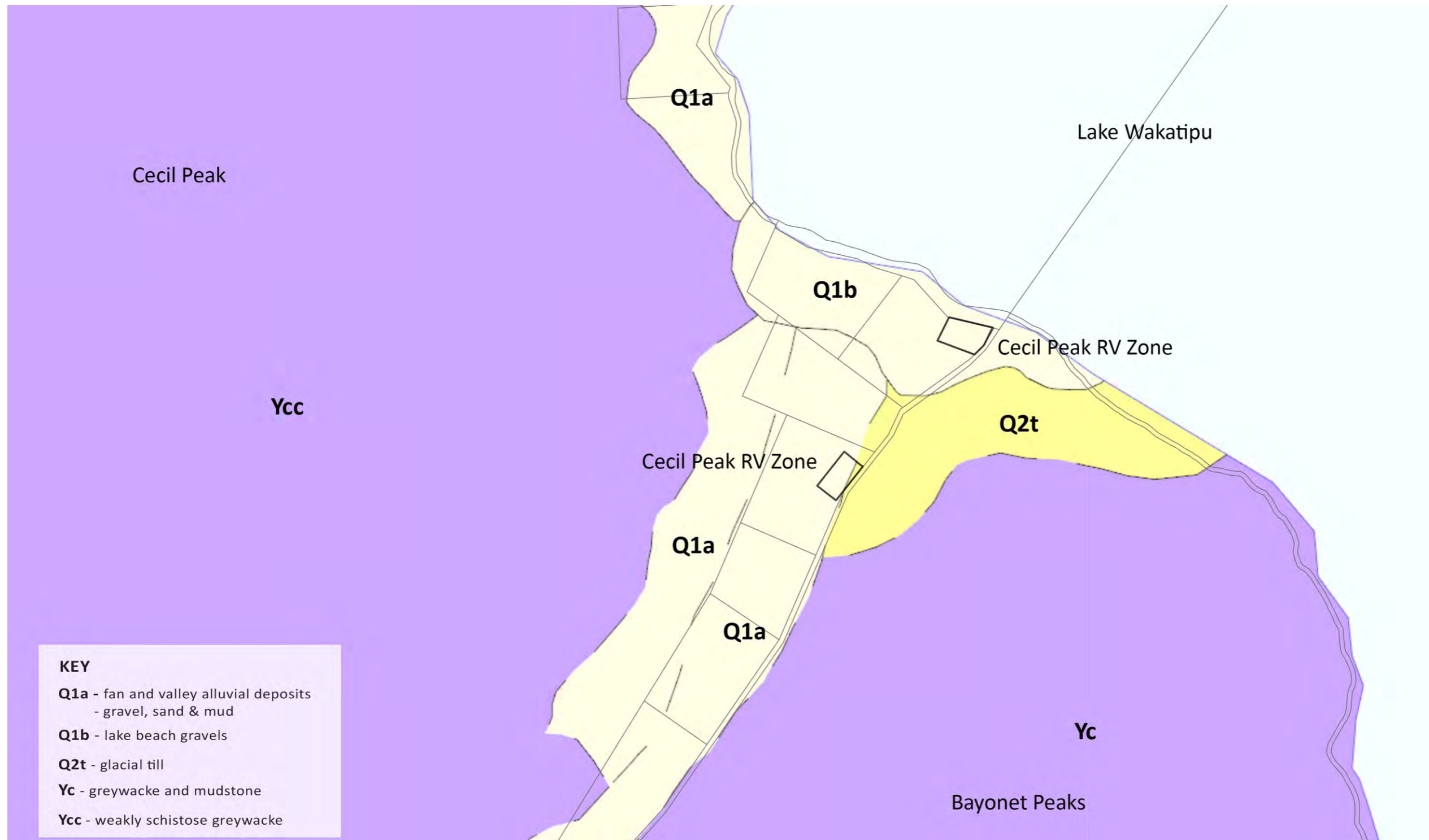


Figure 13: Geology in the vicinity of the Cecil Peak RV Zones (source QLDC GIS & GNS 1: 250.000 Wakatipu Geological Map)





Figure 14: Cecil Peak RV Zones features and immediate context.





**Photograph 18:** View from south-west corner of northern RV Zone showing short row of conifers (panorama stitched from 2 photographs taken at 50mm lens equivalent at 9.15am on 20-02-19)





**Photograph 19:** View south towards southern Cecil Peak RV Zone – greener pasture in mid-ground on right of farm track (panorama stitched from 2 photographs taken at 50mm lens equivalent at 9.25am on 20-02-19)



**Photograph 20:** View south across southern RV Zone (photograph taken at 50mm lens equivalent at 9.30am on 20-02-19)



**Photograph 21:** Enclosed picnic shelter, stone building and lodge at Cecil Peak Station with northern RV Zone in mid-ground (photograph taken at 50mm lens equivalent at 9.00am on 20-02-19)





Figure 15: Cecil Peak RV Zones landscape sensitivity.



## Walter Peak RV Zone – maps and photographs

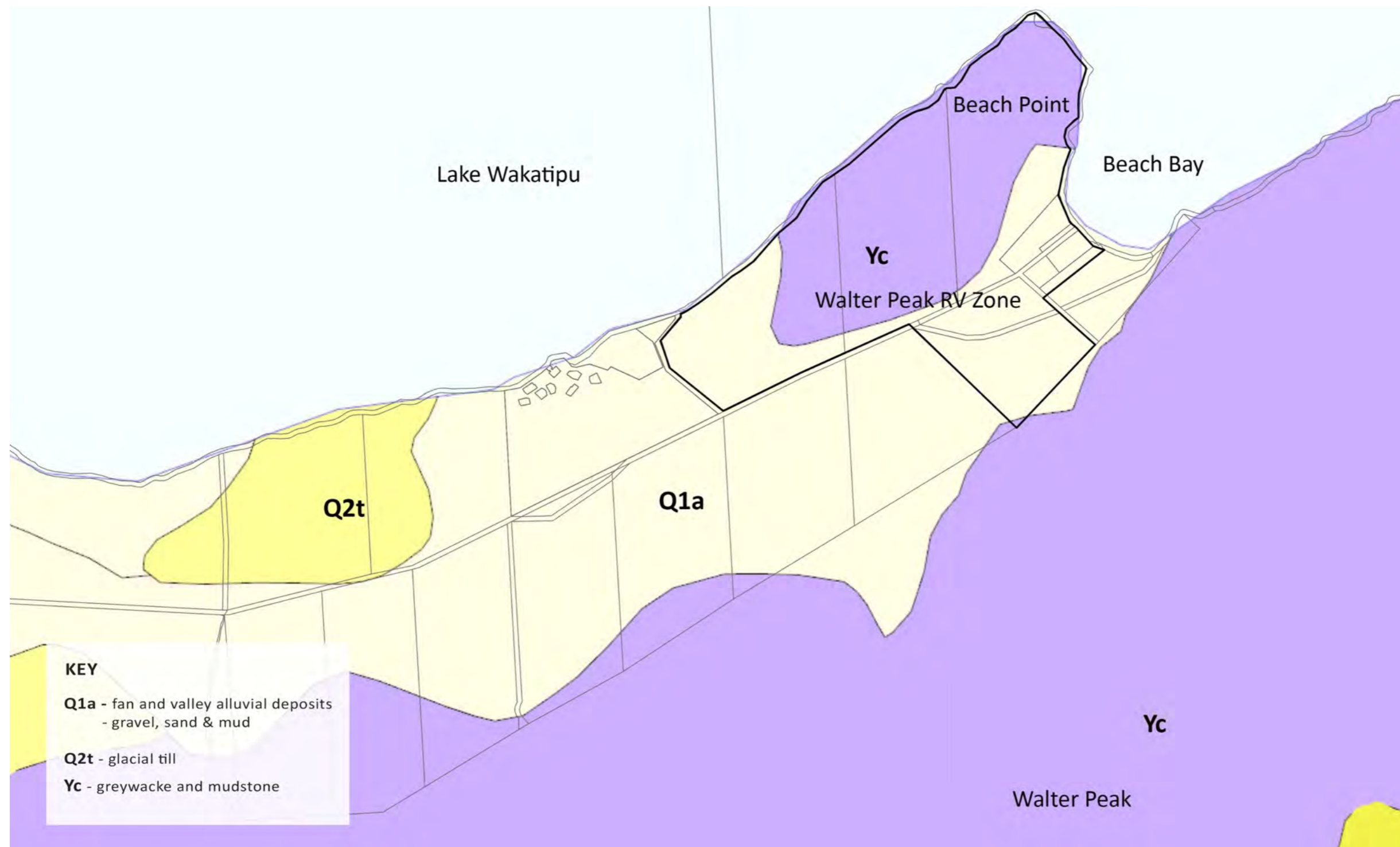


Figure 16: Geology in the vicinity of the Walter Peak RV Zone (source QLDC GIS & GNS 1: 250.000 Wakatipu Geological Map)



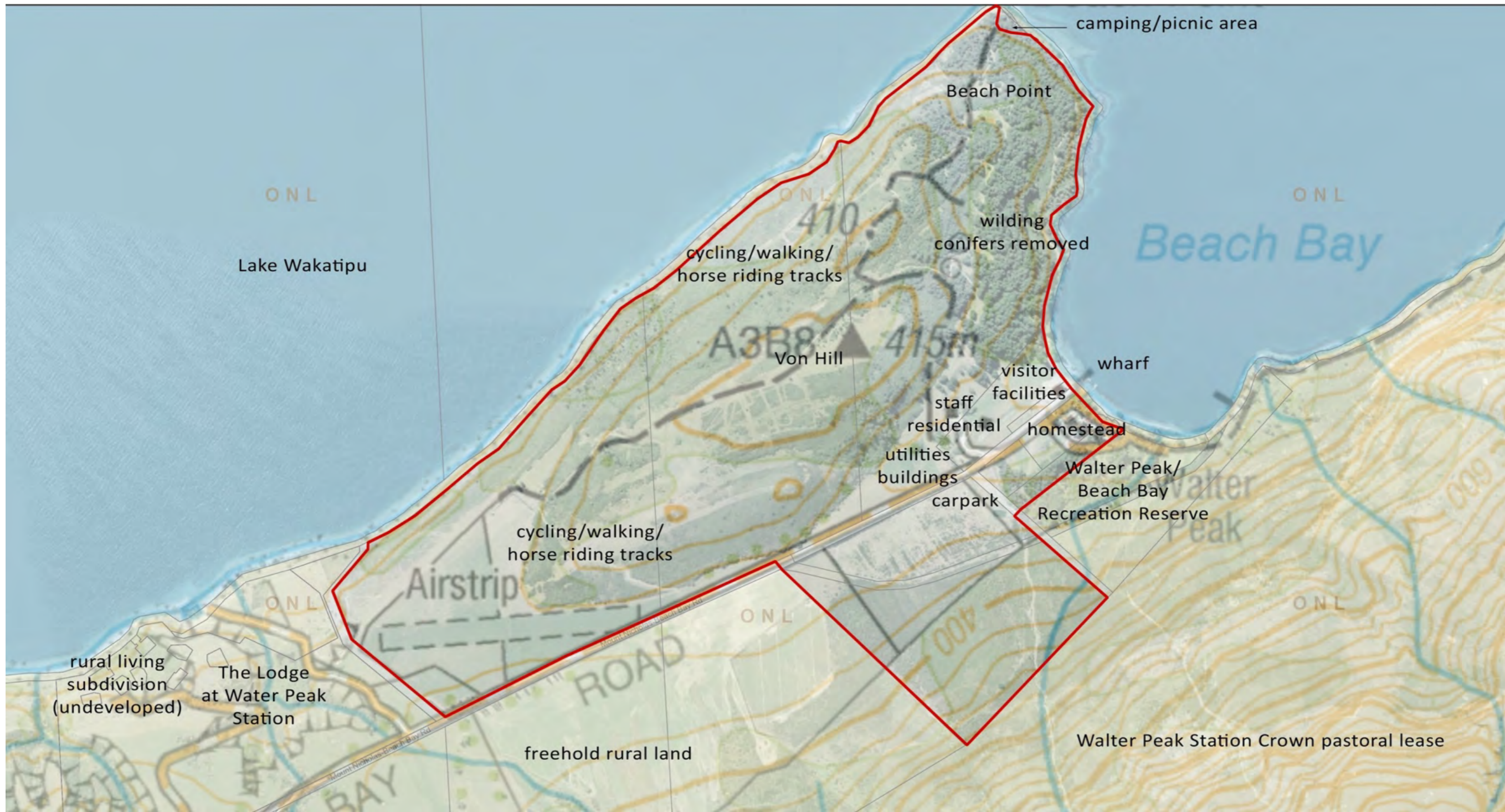


Figure 17: Existing features and immediate context





**Photograph 22:** View from lake to Beach Bay and Beach Point (panorama stitched from 3 photographs taken at 50mm lens equivalent at 11.35am on 20-02-19)



**Photograph 23:** View from lake to Beach Bay (photograph taken at 50mm lens equivalent at 11.35am on 20-02-19)



**Photograph 24:** Southern section of RV Zone extending up toe slopes of Walter Peak (photograph taken at 50mm lens equivalent at 12.10pm on 20-02-19)





**Photograph 25:** View from Mount Nicholas – Beach Bay Road over western area of RV Zone, including airstrip (panorama stitched from 3 photographs taken at 50mm lens equivalent at 12.20pm on 20-02-19)



**Photograph 26:** View east along Mount Nicholas-Beach Bay Road (photograph taken at 50mm lens equivalent at 112.25pm on 20-02-19)



**Photograph 27:** View to Walter Peak and RV Zone from northern lake shore (photograph taken at 105mm lens equivalent at 8.40am on 21-02-19)



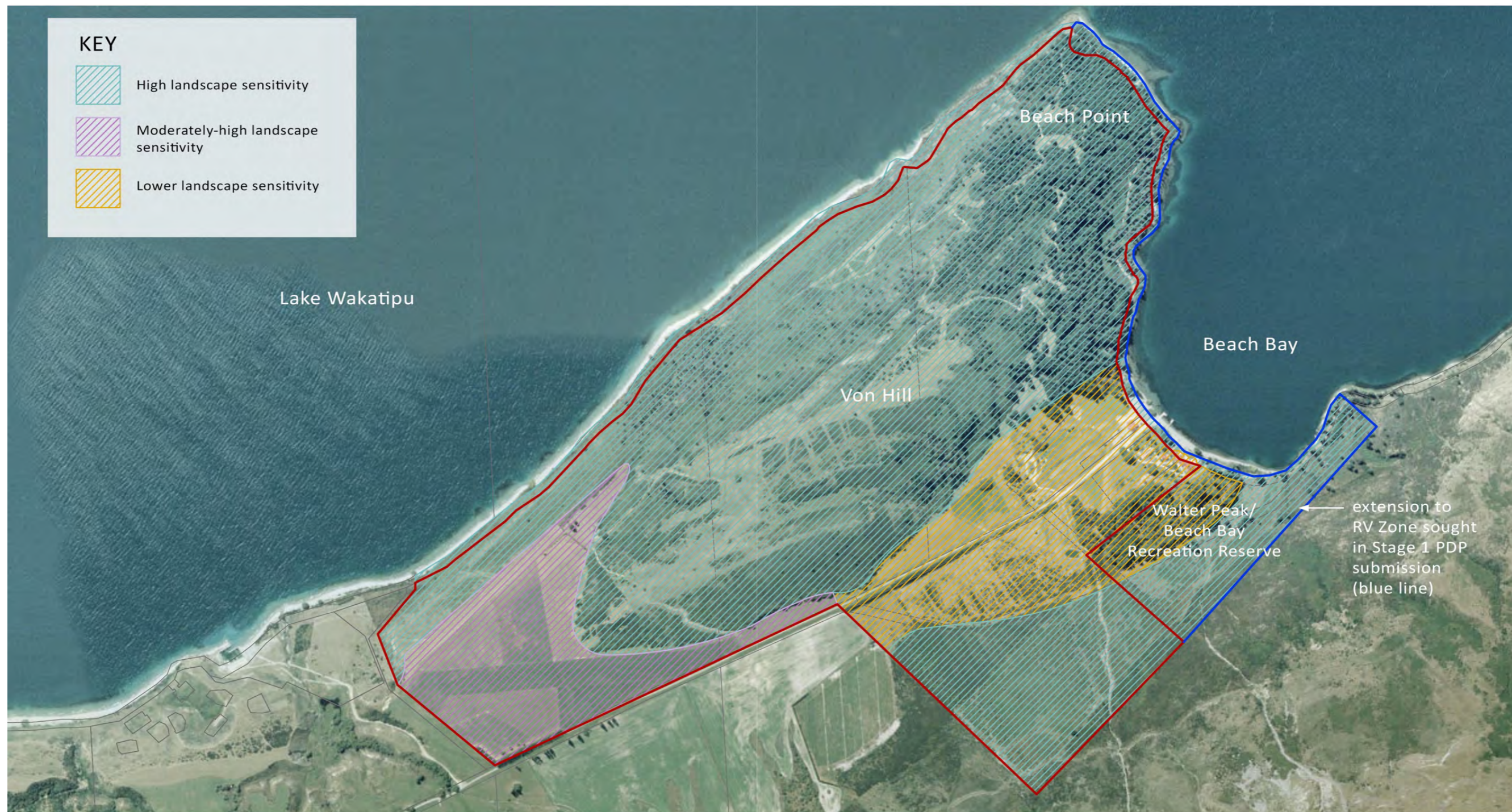


Figure 18: Walter Peak RV Zone landscape sensitivity.



## Windemere RV Zone – maps and photographs

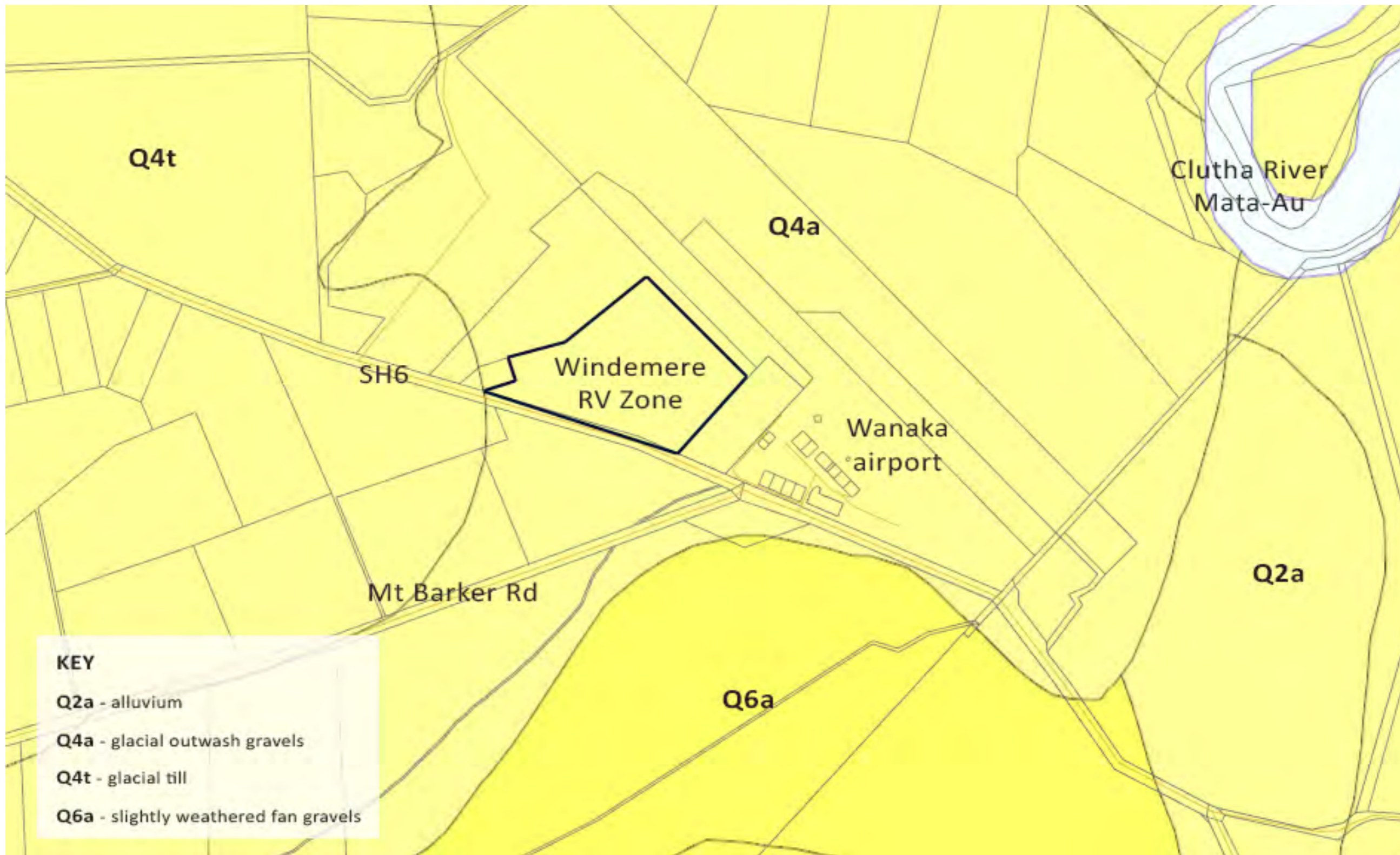


Figure 19: Geology in the vicinity of the Windemere RV Zone (source QLDC GIS & GNS 1: 250.000 Wakatipu Geological Map)





Figure 20: Existing features and immediate context





**Photograph 28:** View from SH6 across RV Zone to mountains (source: Google Earth 09/2018)



**Photograph 29:** View from SH6 across eastern part of RV Zone to mountains (source Google Earth 09/2018)



**Photograph 30:** View from SH6 at Wanaka airport showing views to mountains obscured (source: Google Earth 09/2018)





Figure 21: Windemere RV Zone landscape sensitivity.