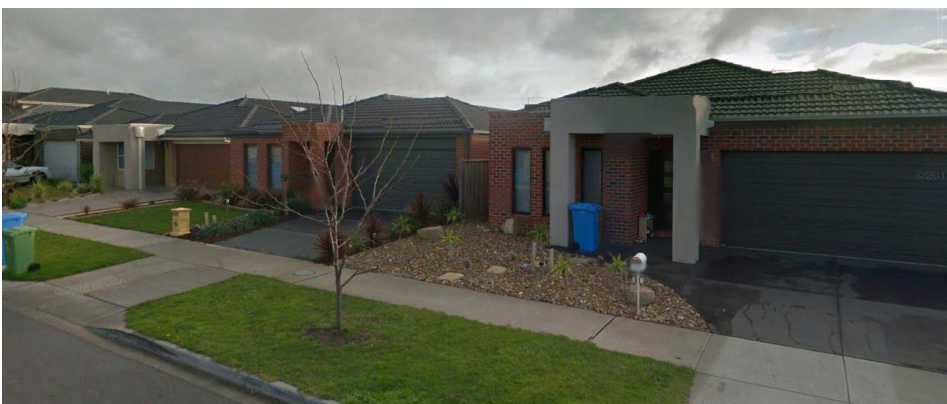
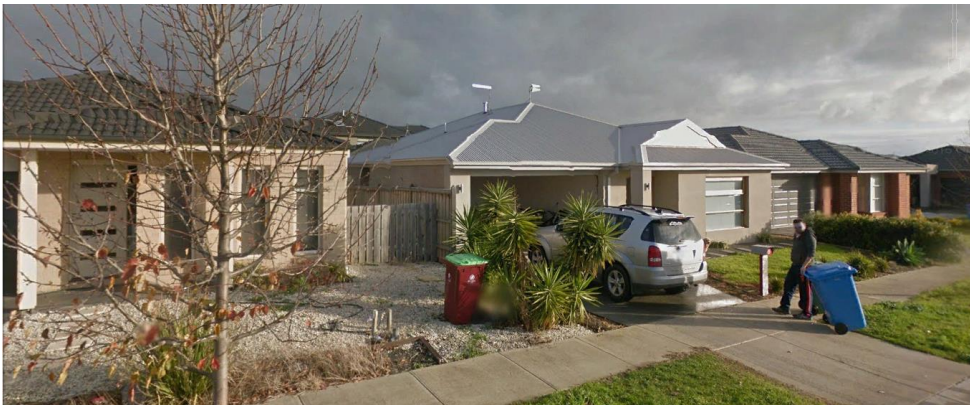
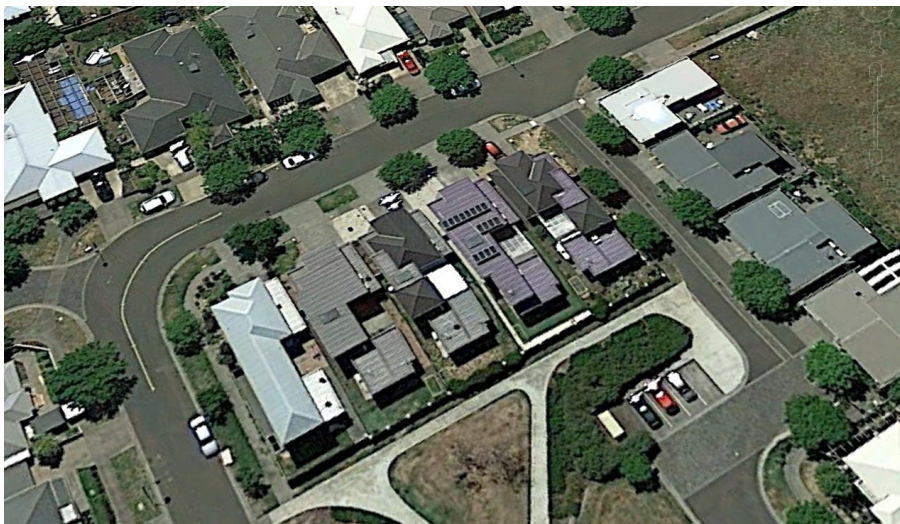


Supplementary evidence handout – Dan Wells – Subdivision hearing
– 1 August 2016 – Examples of small lot subdivision



12 x 26m sites (312m² sites) - Cranbourne, Melbourne, Victoria



Waterview boulevard, Craigieburn, Melbourne – 10 x 28m – 280m² sites



28x10m sites (280m²) – Hobsonville, Auckland



Breadlebane Avenue – Mendra, Victoria - 5.6 x 27m deep, 155m2 sections (served from a rear lane)

**Our Liberty Series has a choice of stunning facades.
Please speak to one of our New Homes Consultants for pricing details.**



Also from Mendra, Victoria - 8.5 x 22m (187m2) sections –examples from a building company brochure of houses that fit on these

