

# RETHINK, REDUCE, REUSE & RECYCLE



MAKE LANDFILL THE LAST RESORT

# WHAT GOES IN MY RECYCLING BINS?

## GLASS RECYCLING

CLEAN GLASS BOTTLES & JARS ONLY



Only glass bottles & jars that contained food or drink can be recycled. Ceramics & other glass have to go in the red rubbish bin, including wine glasses, drinking glasses, perfume bottles, moisturiser jars, heat-proof glass (like Pyrex), windows & mirrors. Lids go in the rubbish too.

## MIXED RECYCLING

CLEAN PLASTIC BOTTLES, TRAYS & CONTAINERS MARKED ♻️ ♻️ & ♻️, CANS, PAPER & CARDBOARD



Use the red rubbish bin for soft plastics, lids, coffee cups, drink cartons, plastics ♻️ ♻️ ♻️ or ♻️, & plastic or foil lined paper & cardboard.

# WHAT GOES IN MY RUBBISH BIN?

**RUBBISH E.G. SOFT PLASTICS, COFFEE CUPS, PLASTIC OR FOIL LINED PAPER/CARDBOARD, LIDS & DRINK CARTONS**

**RUBBISH**



No hot ashes, batteries, flammable aerosols or chemicals. They might leak or start a fire. Go to [www.qldc.govt.nz](http://www.qldc.govt.nz) for information on how to dispose of hazardous waste safely.

## EMPTY, CLEAN, RECYCLE

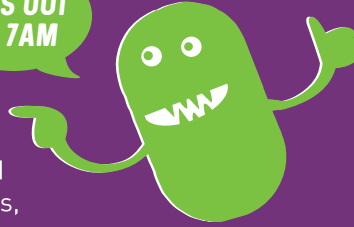
What you put in the bin matters, so please follow the golden rules:

- Empty bottles & containers of food & liquid & give them a clean before recycling them.
- Make sure your recycling is taken out of boxes & bags.
- Put lids, pumps & triggers in the rubbish.
- Items bigger than 4 litres & smaller than your palm go in the rubbish.



# ON COLLECTION DAY

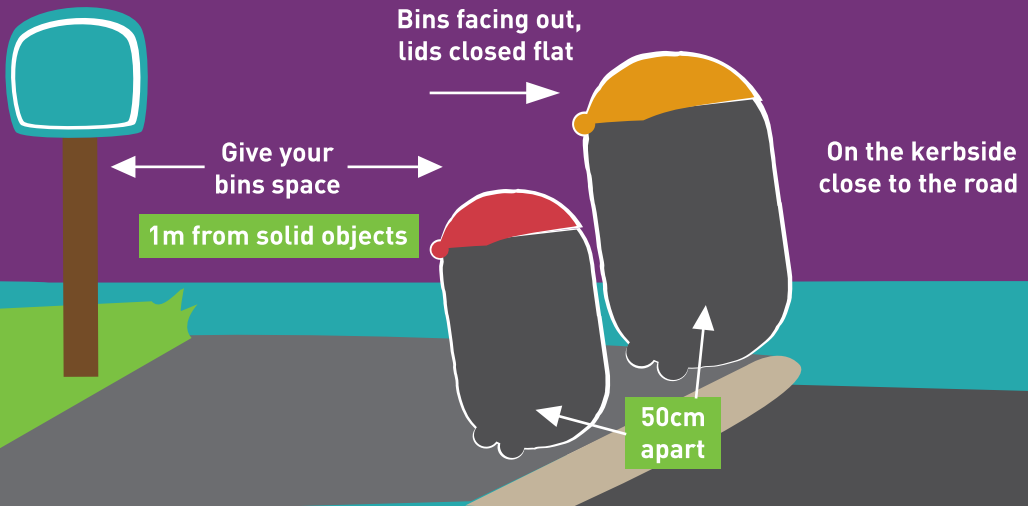
**BINS OUT  
BY 7AM**



Put your bins out on the kerb (or your designated collection point) the night before or by 7.00am on your collection day.

Place bins facing the road with the lids closed flat. Bins should be 50cm apart and 1m from fixed objects like letterboxes, trees, and power poles.

Placing your bins out correctly for collection and bringing them back in on the same day helps keep your neighbourhood footpaths clear and safe.



## BIN DAY REMINDERS



Your blue glass recycling bin and yellow mixed recycling bin are collected on alternate weeks.

Your red rubbish bin is collected every week.

Sign up for a weekly bin day text or email reminder at [reminders.saveourstuff.co.nz](http://reminders.saveourstuff.co.nz)

