

Scuttlebutt

THE QUEENSTOWN LAKES DISTRICT COUNCIL NEWSLETTER // AUG / SEP 2022 // ISSUE 150

Celebrating 150 editions

Welcome to our 150th edition of Scuttlebutt.

Scuttlebutt debuted as our resident and ratepayer newsletter back in 1996. Twenty-six years and four editors later, the publication is still going strong.

It was fun to look back at past editions and while a lot has certainly changed over the years, the heart of the newsletter remains the same. It's all about keeping our people informed and celebrating what makes this district special. We hope you enjoy the glimpse back at the past as much as we did. **Read more on page 9.**



INSIDE

02

A FAREWELL FROM JIM

05

PROTECTING OUR LANDSCAPES

06

GET SET TO VOTE

14

LATEST STREET UPGRADE NEWS



Tell us if you want to save paper and read Scuttlebutt online. See page 19 for details.



Scuttlebutt is printed on paper sourced from sustainably managed forests.



Scuttlebutt is recyclable. Please recycle me.

A farewell from Jim

‘It has been a privilege to lead such an amazing, passionate and outstanding community’

After two terms as Mayor, Jim Boulton is not seeking re-election in October.

“It has been a privilege to lead such an amazing, passionate and outstanding community, but it is now time for me to pass on the mayoral chains to someone new.”

Much has changed since Jim was first elected in 2016.

“Back then the big issues were parking outside the airport and freedom camping. Both those have disappeared, although the latter might come back with the welcome return of visitors,” he says.

He has thoroughly enjoyed his time leading this wonderful district.

“We have achieved some outstanding results over the past six years and my only regret is that some of our aims have been derailed by COVID-19.”

As he prepares to step down from public office, we asked Jim to share some of his best (and worst!) moments during his time as Mayor.

I'M PROUD OF:

Vision Beyond 2050 and all the hard work going into bringing it to life.

The work we did to get the \$2 bus established.

Progress on housing – the Secure Home programme that came out of the Mayoral Housing Affordability Taskforce is outstanding and is now being picked up by other councils and housing providers.

The Spatial Plan and the partnership approach being taken to implement it.

Getting money from the Government's shovel-ready fund to help pay for the Queenstown Town Centre Street Upgrades and Stage 1 of the Arterial Road.

Our handling of the migrant worker crisis when COVID struck.

Our interaction with central government – we have caused them to sit up and take notice.

The work being done in the community to respond to climate change.

The work done on economic diversification.

Our strong relationship with iwi.

The Wānaka Lakefront upgrade.

I'M DISAPPOINTED:

We didn't achieve the Visitor Levy – although I think it will come in the future.

About the angst in the community over airport matters.

About traffic congestion on the state highway – Waka Kotahi has let us down.

We haven't progressed further with Project Manawa.

More support wasn't given to the tourism industry over the past two years – those in it really suffered.

I WILL REALLY MISS:

Citizenship ceremonies – it's wonderful welcoming all the new citizens who add so much diversity to our district.

Working with the people at QLDC – a wonderful bunch.

Helping people – I think we have been able to make a real difference to some lives.

Mixing with the outstanding people who populate our incredible part of the world.

Working hard on behalf of locals.

Cool reminders about hot ashes

WORST MOMENT:

The realisation of the impact COVID would have.

BEST MOMENT:

Helping a mum from Argentina track down her son.

PARTING MESSAGE:

Thank you for the trust placed in me to lead the district. I have been honoured.



Who doesn't love a roaring fire on a frosty night, but take care when disposing of the ashes.

Hot embers can remain long after the flames have died down, and can start fires in rubbish bins, collection trucks, or the landfill. Fire and Emergency New Zealand recommends ash is put into a metal bucket and soaked with water. Leave it to cool for at least five days before bagging it and disposing of it in the rubbish.

Cold ash can also be spread on a garden as a fertiliser. Just make sure you're not burning treated wood.



Always outnumbered...
never outgunned.

vivian+espie

resource management and landscape planning

(03) 441 4189 www.vivianespie.co.nz

Introducing Abbey

New role to support relationships with small communities

We are delighted to introduce our new Community Associations Relationship Manager, Abbey Mocke.

Abbey has been appointed to build and enhance the relationships we have with recognised community associations across the district. She'll split her time between the Upper Clutha and Whakatipu.

"The last couple of years have been challenging for everyone and I'm thrilled that in this role I'll be out and about making sure we support our associations and maintain trusted relationships with our communities," she says.

We asked Abbey to share a bit about herself and her plans for her new role in our Community Partnerships Team.

PLEASE TELL US A BIT ABOUT YOUR BACKGROUND

I moved to the district from Queensland, Australia, early in 2021 with my husband and our two dogs. My husband grew up in New Zealand and we're really proud to now call this region our home. I had been working with the QLDC Parks Team, so already have some great community relationships and insight into the delivery of community projects here.

WHAT EXCITES YOU ABOUT YOUR NEW ROLE?

One of the most exciting things is the opportunity to enhance and build sustainable relationships with community associations throughout the district. We have a wonderful and diverse population and I am looking forward to getting to know each pocket of the district, to understand the needs of the people who live there and – most importantly – learn how I can help.

HOW CAN YOU HELP THE DISTRICT'S COMMUNITY ASSOCIATIONS?

In a nutshell, my role is to ensure community associations have the support and tools they need to be effective.

WHAT'S YOUR FAVOURITE THING ABOUT QUEENSTOWN LAKES DISTRICT?

The people that make up the community, hands down. Of course, the amazing scenery is the cherry on top, but since moving here, I have learnt that this community is

special ... it's passionate, friendly and is made up of people from all walks of life and that's what makes it special. Another thing I love is the change of seasons! As I grew up in a regional town in Queensland, I never had an opportunity to experience this until moving here. I am in awe of the beautiful autumn colours and, of course, the snow!



Protecting our landscapes

Our district is famous for its beautiful landscapes and we're working hard to protect them.

Schedules setting landscape values for 29 priority areas have been drafted and publicly notified as a variation to Chapter 21 Rural Zone of the Proposed District Plan. We know this is a complex process, and takes time to understand, but we urge you to take a look at www.qldc.govt.nz/landscape-schedules, then let us know what you think. Be quick, as submissions close on 26 August.

HOW DOES THIS AFFECT YOU OR YOUR COMMUNITY?

The proposed landscape schedules aim to clearly identify which aspects of these landscapes are to be protected, maintained, or enhanced. They will help in the assessment of applications for resource consents for subdivision or development on properties within the identified areas. There are no changes to the rules for subdivision or development as part of this proposal, and no changes are proposed to Proposed District Plan maps.

WHICH LANDSCAPES ARE INCLUDED?

You'll find a full list of the landscapes included and a map that shows the extent of each at www.qldc.govt.nz/landscape-schedules.

WHAT CAN YOU DO?

We'd like to know if you support or oppose the proposal. If you'd like changes make sure you tell us why. Submissions can be made using our online form found at www.qldc.govt.nz/landscape-schedules.

Or, you can send a written submission (which must be on the prescribed form 5) by:

Email: pdpsubmissions@qldc.govt.nz

Post: PDP Submissions, Queenstown Lakes District Council, Private Bag 50072, Queenstown 9348.

Submissions close on Friday 26 August 2022.

Need more information?

You'll find more information on the proposed variation to Chapter 21 Rural Zone of the Proposed District Plan at www.qldc.govt.nz/landscape-schedules.

A duty policy planner is also available to help during normal office hours until submissions close. Call 03 441 0499 (Queenstown) or 03 443 0024 (Wānaka) to talk on the phone or make an appointment.

Looking for the best return on your investment?



Talk to our **property management superheroes**

for honest, expert advice and a free market rental appraisal.

Awarded Queenstown Chamber of Commerce Small Business of the Year 2021

HOUSEMART
HOW SMART

Phone 03 442 3815

www.housemart.co.nz

IT'S LOCAL ELECTION YEAR

GET SET TO VOTE

If you're voting for the first time, or you're just feeling a bit rusty on the details, don't worry – we've got you covered.

CAN I VOTE?

You can vote if:

- > you are 18 years or older AND
- > you are a New Zealand citizen or permanent resident AND
- > you have lived in Aotearoa New Zealand for one year or more continuously at some point.

If you are unsure if you meet these criteria, the best thing to do is call the Electoral Commission on 0800 36 76 56.

AM I ENROLLED TO VOTE?

To vote, you need to be enrolled.

In Aotearoa New Zealand we have electoral rolls, which are lists of people who have enrolled to vote by district.

You are automatically enrolled to vote in the upcoming election if you're a Queenstown Lakes District resident and are already on the parliamentary electoral roll for the general election.

To enrol, check or update your enrolment details, go to www.vote.nz.

Freephone 0800 36 76 56 or free text 3676 to get a form sent to you in the mail.

HOW DO I VOTE?

Everyone who is enrolled will be sent voting papers in the mail in mid-September, so keep an eye on your mailbox. And if you have a PO box instead, remember to check that too!

When you get your voting papers, we encourage you to read them carefully and consider who you want to vote for.

You need to pop your voting papers back in the envelope and into a public mailbox by 4 October, to ensure they are delivered by the deadline of 8 October.

You can also drop your voting papers into a ballot box in the Wānaka or Queenstown offices.

WHAT IS A SPECIAL VOTE?

Special votes are available to people who are not enrolled but qualify to vote, for people who did not receive voting papers in the mail, or whose papers have been spoilt or damaged, and for those whose names appear on the unpublished electoral roll.

All you need to do to make a special vote is to pop into QLDC's Wānaka office at 47 Ardmore Street or our Queenstown office at 10 Gorge Road between Friday 16 September and Saturday 8 October.

You'll be able to fill out a special vote on the spot or you can take it home – just make sure you deliver it back in time to be with the Electoral Officer by 8 October.

Find out more www.qldc.govt.nz/elections
Stay up to date at www.facebook.com/QLDCinfo

Election day is 8 October 2022



**DESIGN
A VOTING
POSTER!**

ARE YOU AGED 15-20 AND HAVE AN EYE FOR DESIGN?

We're running a competition for young people to design a poster that encourages voting in this year's local election.

The winning design could be displayed on the back of a public bus*, published in Scuttlebutt, shared with local and national media, and on our website and social media channels.

The competition is open to anyone aged 15 to 20, but you'll need to be quick, as entries close at midnight on Sunday 21 August.

Entries need to be provided as PDF or JPEG files and sent to communications@qldc.govt.nz with the subject line: **Voting poster competition**.

For full competition terms and conditions visit www.qldc.govt.nz/competition-terms

**Subject to artwork being of high enough quality and meeting the printer's technical specifications.*

It's rabbit season

Wild rabbits are the number one pest in Otago and have long been a source of trouble for landowners all over Aotearoa New Zealand.

We're working with the Department of Conservation to reduce rabbits on reserve land adjacent to Albert Town, Hikuwai and Northlake. We're also completing our own operation at the old oxidation ponds at 101 Ballantyne Road, and in Luggate Park.

The operation involves carrot baits covered in a Pindone paste. Pindone is poisonous to humans and domestic animals so please don't handle any bait or animal carcasses, supervise children at all times, and do not allow your dog to eat animal carcasses in these areas. If you suspect your dog has been poisoned you should contact your vet immediately.

QLDC does not carry out rabbit control on land it does not manage. Private landowners will also be doing their own rabbit control during this time, and these sites should have warning signage, too.

**PLEASE WATCH FOR WARNING SIGNAGE
AND KEEP DOGS ON A LEASH IN THE
OPERATION AREAS.**

Read more information at
www.qldc.govt.nz/pest-control



Urban Design and Landscape Architecture

www.reseturban.co.nz



*Snow on the Crown Range Road is spectacular but treacherous.
Image credit: Jim Garland (Downer)*

Keeping drivers safe on the Crown Range

Sometimes in winter we make the tough decision to close the Crown Range.

When forecasts show a chilly evening ahead, likely snowfall, or an icy and abrupt change to road conditions, closing access to the Crown Range summit keeps people safe and, in the long run, means we can open the road the next morning earlier than we would otherwise.

On a snowy night on the Crown Range, we often see drivers still trying to use this route, sometimes without chains or experience driving in snow. Not only can this be extremely dangerous, but some drivers inevitably end up stuck on the road or try to turn around, only to be unable to make it back down safely. This means that when road crews wake in the early hours of the morning to clear the Crown Range of snow and ice before gritting the road, they must move abandoned vehicles out of the way before they can even start.

That gives crews more work to do, the Crown Range remains in an unsafe condition longer, and closures to the road last well into the following day.

It's never an easy decision to make, knowing many drivers would rather not take the slightly longer way around, but please be assured we only close the Crown Range overnight (usually from 10.00pm) when the weather is likely to create dangerous driving conditions that can't be easily resolved with a plough and some good old-fashioned grit.

CONDITIONS CHANGE QUICKLY IN AN ALPINE ENVIRONMENT – ALWAYS CARRY CHAINS AND KNOW WHEN AND HOW TO FIT THEM!

< Continued from cover >

Looking back over 150 editions

Here's a good dose of local nostalgia, Scuttlebutt style!



Community has always been front and centre.

And so has keeping our people up to date on the things that matter locally.



Although we certainly used to be a little blunter...

And we might just bring back this 'hot or not' column – although we're on the fence about the 'mayor in leathers' entry!

Here's to the next 150 editions!

As always, if you have feedback to share or ideas for future editions, please get in touch; we'd love to hear from you. Email communications@qldc.govt.nz

...the time to read this special edition of Scuttlebutt and tell us what you think of the proposals.
Convention Centre – go or no go?
Sports Facility – how big, how long?
Leathers – longer hours & access to parking – useful or not?
Leathers – pay off more of it?
• Consultation – what issues, and how?
• Performance – how can you assess it?
Now's the time to have your say.



Supporting tourism in Queenstown Lakes

Our Economic Development team has been busy supporting the tourism re-set in Queenstown Lakes, from tourism funding to destination management planning.

LAST CHANCE FOR TOURISM FUNDING

Are you a tourism business or supplier of tourism businesses? You can apply for funding from the Government of up to \$60,000!

The Ministry of Business, Innovation and Employment (MBIE) has three funds available for tourism businesses or suppliers of tourism businesses in the Queenstown Lakes District.

The purpose of the fund is to support tourism businesses to recover and re-set from the impacts of COVID-19 and it can be used in areas such as marketing, legal, accounting, wellbeing, training, digital enablement, HR, and sustainability.

QLDC's Economic Development Manager Peter Harris strongly encourages all tourism-related businesses to consider applying.

“Otago Regional Business Partners team will work with you to check if you're eligible, and help you navigate the application process.”

The QLDC finance team pays out the MBIE grants once they have been approved.

THE THREE FUNDS ARE

Business Advisory Support — up to \$5,000 per business operation to enable businesses to receive expert advice and support.

Advice Implementation Grant — up to \$5,000 per business operation for businesses to implement business advice.

Tourism Kick-start Fund — \$10,000 to \$50,000 per business operation to help tourism operators scale back up for the return of international visitors.

Register before 31 August 2022 with Otago Regional Business Partners at **web.regionalbusinesspartners.co.nz/business**.

TOURISM FOR A BETTER FUTURE

We partnered with Destination Queenstown and Lake Wānaka Tourism to develop a destination management plan for the district.

Tourism for a Better Future outlines a vision for regenerative tourism in the Queenstown Lakes District by 2030. The plan includes core values and guiding principles for tourism, and looks at challenges and opportunities for Queenstown Lakes. Feedback on the draft plan has now closed and will be reviewed with an aim to launching the final plan later this year. For more information check out **www.queenstownnz.co.nz/regenerative-tourism-2030/**.



Funding boost for local community groups

Sixteen hard-working community groups will share \$200,000 in funding distributed through this year’s Annual Plan process.

“The recipients of the Council grants are not-for-profit organisations that fulfil a broad range of valuable services to our community, including conservation, mental wellbeing support, active transport and the voluntary sector,” Marie Day, QLDC’s Community Partnerships Manager, says.

Most of the money will be used to cover annual operational costs. Longer-term community funding is allocated during the Council’s Ten Year Plan process.

The largest grant of \$40,000 went to Shaping Our Future, whose members are working with individual communities throughout the district to amplify their voices and to facilitate open debate to better inform decision-making.

THE FULL LIST OF QLDC COMMUNITY GRANTS APPROVED AS PART OF THE 2022-2023 ANNUAL PLAN IS:

Bike Wānaka - \$21,000
ChildPlayWorks Charitable Trust - \$2,000
Citizens Advice Bureau - \$5,000
Friends of Bullock Creek Inc. - \$10,000
Glenorchy Heritage and Museum Group - \$5,000
Glenorchy Trails Trust - \$20,000
Happiness House Trust - \$10,000
Hāwea Community Association - \$8,000
Volunteer South Kaitūao o te Taitonga - \$10,000
Queenstown Harvest Community Gardens - \$5,000
Shaping Our Future Inc. - \$40,000
Southern Lakes Branch of the New Zealand Deerstalkers Association - \$6,500
Southern Wellbeing Trust - \$13,000
Te Kākano Aotearoa Trust - \$3,500
The Lightfoot Initiative Charitable Trust - \$20,000
Upper Clutha Tracks Trust - \$21,000

Hotel puts scraps to good use

The Hilton hotel company is serious about reducing its environmental impact and preserving the beautiful destinations in which it operates.

It is proud of its claim to be the first major hotel company to establish science-based targets to reduce greenhouse gas emissions in line with the Paris Agreement. And it is taking major steps to reduce its environmental footprint through its Watts, Water and Waste programmes.

Waste prevention, recycling, and food upcycling and donation

are all key components of creating a greener hospitality industry, the company says.

“We have pledged to reduce our waste, including food waste, by 50% by 2030.”

In Queenstown, Hilton has found a win-win solution to help with that.

Food scraps from its kitchens and diners’ plates

are fed into a food waste dehydrator, set up with the help of a \$6,000 grant from the Queenstown Lakes District Council’s 2021 Waste Minimisation Community Fund. The dehydrated product, essentially compost, is donated to a local community garden.

Chris Ehmann, general manager of the Hilton Queenstown Resort & Spa and DoubleTree by Hilton

Queenstown, says the project diverts about 200 kilograms of food waste from landfill each week.

“We only have one planet and we need to take care of it! We are very focused on how to reduce our carbon footprint and support local organisations,” he says.

The introduction of the composting programme required some training



Hilton staff members feed food waste into the dehydrator.

Hilton staff members remove wilding pines from a plot of land they look after near the Skyline Gondola.

Backing for great ideas to cut waste

in sorting food waste at source, as well as changes to some processes.

However, Chris says staff were quick to adapt and support the programme.

“We are fully operational and composting all of our food waste. The WMCF grant helped get this programme established.”

Now, Chris and his team are looking for other ways to reduce waste and create a circular economy.



We only have one planet and we need to take care of it!

We are on a mission to end waste in the Queenstown Lakes District.

One of the ways we do that is by giving money to community initiatives to reduce waste or to reuse resources, thereby diverting them from landfill. About \$122,000 from QLDC’s Waste Minimisation Community Fund has just been allocated to 13 such initiatives.

Projects to receive grants this year include a bank of reusable nappies to be used by families in the Glenorchy area, and a pilot scheme by Wastebusters to rebrand and sell surplus uniforms.

The Wānaka Community Workshop Trust will receive money to buy another piece of machinery for its MenShed, as well as to set up the new Fabricate space where people can learn to repair, remake and create clothing and basic soft furnishings.

A past recipient, Wao, won a grant to continue its work encouraging a shift in behaviour in the construction and building sector towards a circular economy design and build model.

“Deciding where to allocate the money was tough this year, but it is inspiring to see so many great ideas for cutting waste coming from the community,” Waste Minimisation Officer Kath Buttar says.

QLDC is delighted to also support a range of initiatives involving children and schools. The Wanda Foundation has been funded to stage 14 shows for children across the district featuring Waste Free Wanda. Other grants will be used for composting and recycling programmes in schools.

“It’s fantastic that young people are helping to drive positive change and taking that into their homes.”

THE SUCCESSFUL APPLICANTS ARE:

Glenorchy Reusable Nappy Bank	Wānaka Community Workshop Trust
Hāwea Flat School	Wānaka Primary School
Lake Hayes A&P Society	Wanda Foundation
Mount Aspiring College	Wao
Pinnacles Early Learning Centre, Wānaka	Wastebusters
Queenstown Harvest Community Gardens	

We’ll profile these awesome projects in future editions of Scuttlebutt and on our social media channels.

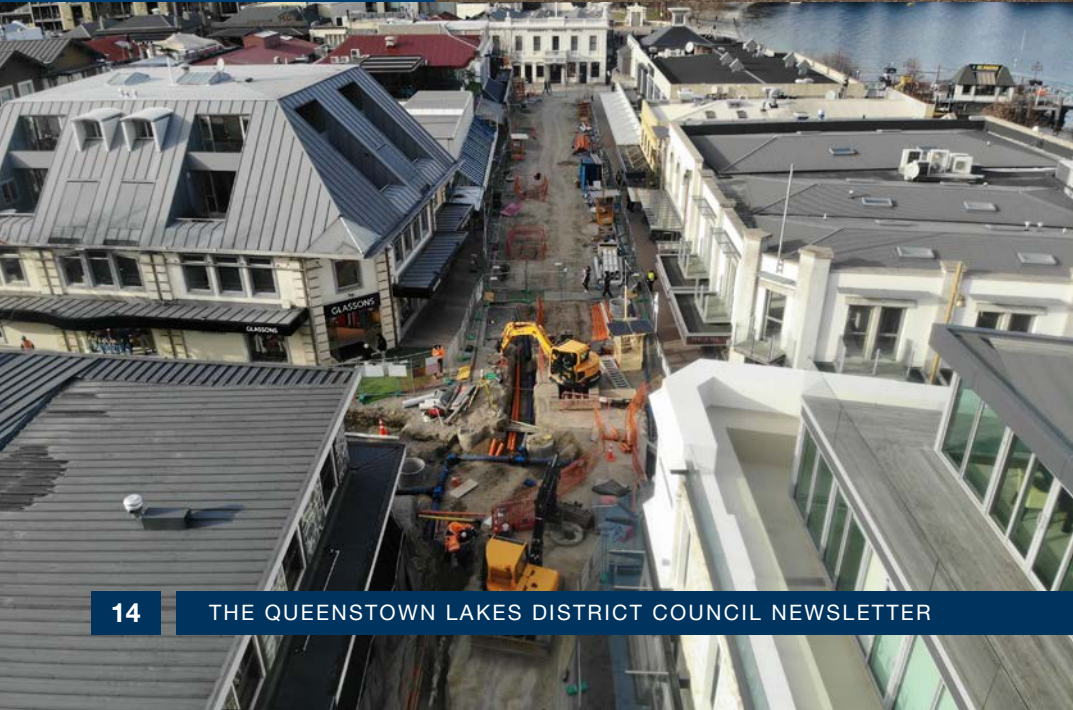
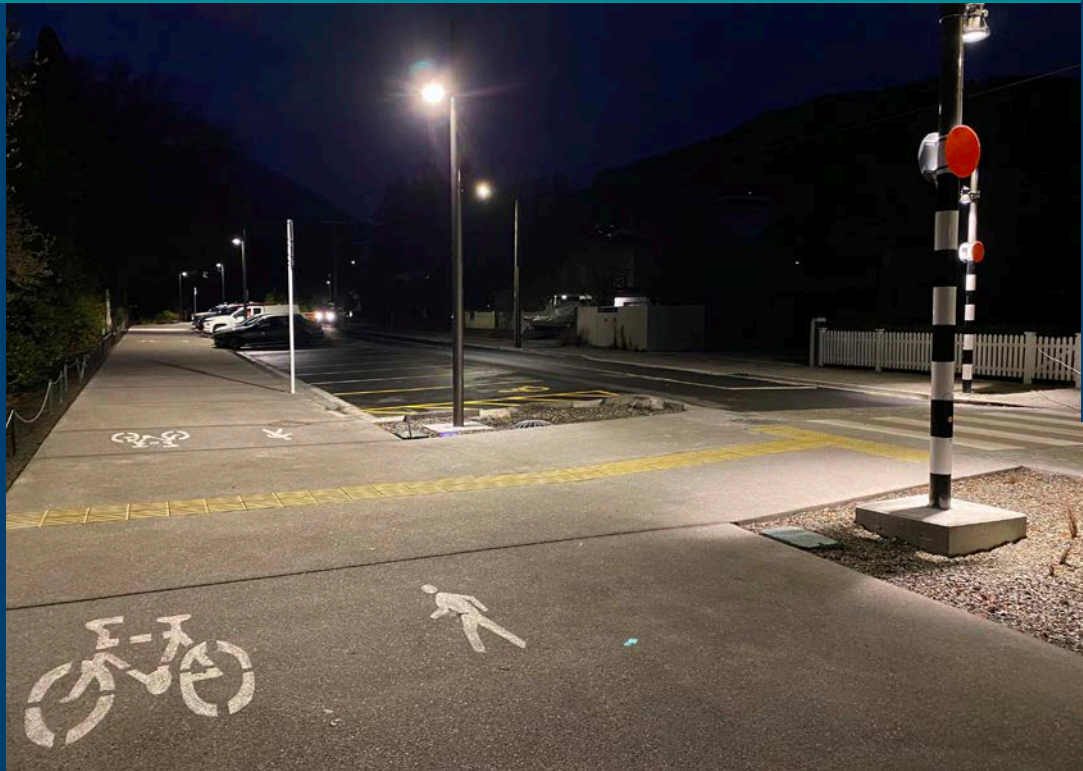
Latest street upgrade news

With each week, progress is being made across our street upgrade programme. Here's the latest news.

Park Street

Park Street has reopened to traffic and parking. The wide footpaths create a safe environment for walking and cycling. There are still a few finishing touches to complete in spring, such as planting garden beds, and installing street furniture and a balustrade along the western side of the street.

Park Street lights up — the new street lights on for the first time last month.



Rees Street

We have finished installing the underground services on Rees Street and are now rebuilding the base of the street in preparation for concrete pours in September. The team is doing everything it can to have the paving complete by Christmas.

Beach Street

Paving is complete on Lower Beach Street. We're expecting most street furniture and signage to be installed by September. The final element – a bespoke piece of timber seating on the edge of Earnslaw Park, will be installed in November. When it reopens to traffic in December, Lower Beach Street will be a low-speed, shared zone. One-way traffic will be retained but the space will prioritise access for walking and cycling, in a similar way to the existing shared zone on Marine Parade.

Upper Beach Street is being completed in two sections to ensure integration with the redevelopment of O'Connell's Mall. The result is a great example of how the public and private sector can work together to achieve a good outcome for Queenstown. To update on progress, all concrete has now been poured and final paving is underway. Work is underway to tie in Upper Beach Street and Camp Street. We're expecting to be finished on Upper Beach Street in September.



Brecon Street

The top half of Brecon Street is almost completed. A complex piece of work is now underway to construct a new intersection at Isle and Brecon streets.

The upgrade of Lower Brecon Street is progressing well. Base concrete has been poured and paving is underway. We've also finished installing ducting for the traffic lights that will control the intersection of Shotover, Duke and Rees streets in the future. Good progress is also being made to seamlessly integrate Brian Smith Park with the new shared space. A bigger lawn and more seating will provide plenty of spots to relax.

A note on delays

Without a doubt, the past few months have been an exceptionally challenging time. Like many local businesses, we've been challenged by staff absences due to winter illness and COVID-19, along with supply chain issues. We're optimistic the rest of the year will offer fewer challenges so we can wrap up the Queenstown Town Centre Street Upgrade programme with fewer delays.

Progress on the Town Centre Arterial – Stage 1

Good progress is being made to create the new intersection at Frankton Road and Melbourne Street.

The focus at the moment is on upgrading underground services in this location. We've also demolished the apartment annex at Ballarat Street, meaning you can now see how Melbourne and Henry streets will link to create Stage 1 of the new road. As Scuttlebutt went to print, final plans were being approved for the pedestrian overpass to create a safe connection between Queenstown Hill and the Town Centre. We'll publish some graphics to show how it will look as soon as they're ready. Check out www.qldc.govt.nz/queenstown-town-centre-arterial



Sign up for Huanui Pānui

A monthly update on the whole programme of work being delivered by Kā Huanui a Tāhuna.

Kā Huanui a Tāhuna is an alliance partnership between Waka Kotahi NZ Transport Agency and Queenstown Lakes District Council (QLDC) along with four design and construction companies, Beca, WSP, Downer New Zealand and Fulton Hogan.

Fine Free Trial

Borrowing for kids and teens has got a whole lot easier. We are waiving overdue fines on junior items borrowed by junior members.

If you would like your child to have their own membership card, join online at codc-qldc.govt.nz/join or ask a librarian for help.



This trial excludes children's and young adult's items borrowed on adult cards. Use the Library App to keep track!



On your bike!

Now there's even more reason to ditch the car for the bike if you're heading into Queenstown. Free, covered bike parking and e-bike charging stations are now available in the underground Church Street car park in the town centre.

We know cycling into town for work or play doesn't work for everyone. But for those who can, these facilities provide a safe and convenient place to park or 'juice up' your bike, right in the heart of town.



Free bike parking



Free bike charging

**17+ YEARS
EXPERIENCE
IN PROPERTY
MANAGEMENT
IN WANAKA**

**CALL US
(03) 443 2273**

HOMES&CO.
QUALITY PROPERTY MANAGEMENT - GUARANTEED



Marine Parade upgrades

Work to enhance Marine Parade and improve public access and connection between Queenstown's town centre, lakefront, and Te Kararo Queenstown Gardens begins later this month.

John Filmore Contracting (JFC) has been awarded the contract to complete Stage 1 of the project, which includes:

- > new lawns and drainage, with a raised concrete path and new access points all helping to reduce any pooling water on rainy days
- > a new four-bay public toilet block with an accessible toilet and a nappy-changing station
- > new furniture on the lawn spaces to provide a much better area for people to gather and enjoy Queenstown's lakefront and events.

Stage 2 of the project will see a new wastewater pump station building and infrastructure built to improve the resilience of the network, provide for emergency storage, and reduce the likelihood of spills into the lake. Dates for construction of Stage 2 are yet to be confirmed.

LOOKING FOR A WAY THROUGH?

You'll still be able to walk or cycle safely through the site while we work to enhance Marine Parade. We'll have detour routes in place with signage clearly directing you where to go.

ANY QUESTIONS?

If you have any questions about the Marine Parade upgrades, please email parksrequest@qldc.govt.nz or phone **03 441 0499**.

Only rain down the drain!

What goes down the drain outside your house or business - like cleaning detergent, oil residue and dirt from washing your car - ends up in our waterways untreated. We all have our part to play to prevent anything nasty into our waterways!

For more tips, head to www.qldc.govt.nz/stormwater



**Washing your car?
Get on the grass!**

Scuttlebutt online

Did you know that six times a year, we produce around 25,000 copies of Scuttlebutt to distribute to our local residents and out-of-town ratepayers. That's a lot of paper! You can help us reduce the number of copies we print by switching to our email distribution list.

Just email services@qldc.govt.nz with the word "newsletter" in the subject line, and be sure to include your name and postal address so we can cross you off the postal mailing list and send you a website link to Scuttlebutt instead.

Every issue of Scuttlebutt is also on our website www.qldc.govt.nz/scuttlebutt

Queenstown property management

Now in demand
Jack's Point, Arthur's Point & Arrowtown



Rentals Made Easy
Great returns ■ Smart solutions ■ Sound advice

Experience, insight and local knowledge pay dividends. Talk to us today about our **special offer** for new landlords.

[f](#) [+64 \(0\)3 409 0480](#) purepropertyrentals.co.nz

CONNECTING WITH KIDS THROUGH ESPORTS

Can esports and video games be a way to connect with young people? This is the question Zane De'souza is asking and it seems to be a resounding yes!

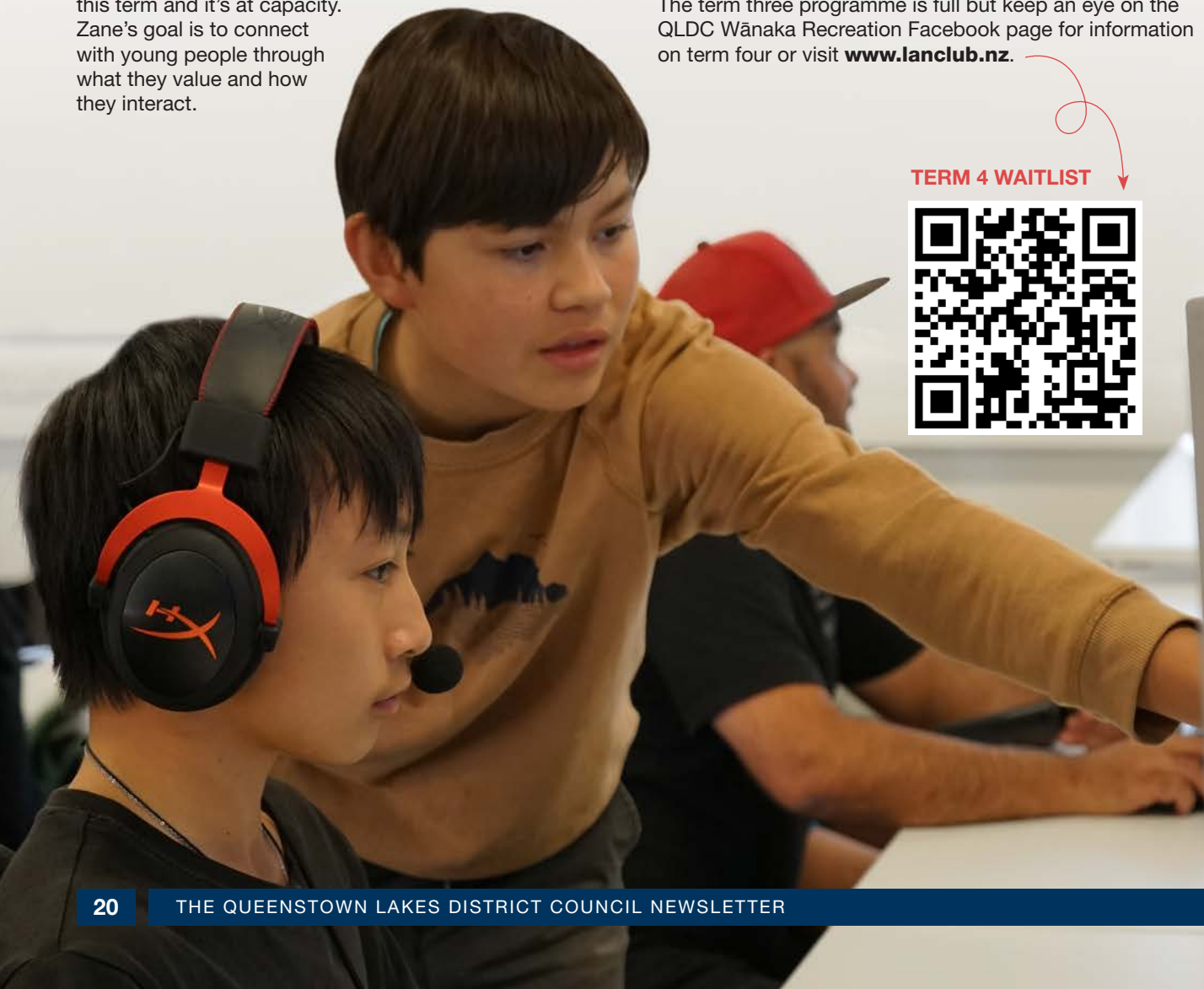
Zane's LAN Club is running a trial programme in partnership with the Wānaka Recreation Centre this term and it's at capacity. Zane's goal is to connect with young people through what they value and how they interact.

"Video games can be a coping mechanism for young people to deal with bullying, depression, disadvantage and other issues. We want to get video games out of the bedroom and bring in some social interaction and healthy habits via an esports-based programme," he says.

The kids in this initial programme will learn about esports as a profession, how to stay healthy, and how to build computers and life skills that will set them up for success, no matter what they choose to do. All while having fun, playing some video games and exercising at the centre.

The term three programme is full but keep an eye on the QLDC Wānaka Recreation Facebook page for information on term four or visit www.lanclub.nz.

TERM 4 WAITLIST



NEW MEMBERSHIP OPTIONS AND UPDATED OPENING HOURS

TERM 3 LOOKS A LITTLE DIFFERENT!

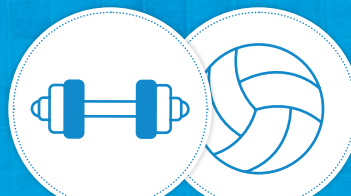


Alpine Aqualand

Wānaka Recreation Centre Pools

Weekdays **6.00am to 7.30pm**

Weekends **8.00am to 6.00pm**



Alpine Health & Fitness

Queenstown Events Centre Stadium

Wānaka Recreation Centre Stadium

Weekdays **6.00am to 9.00pm**

Weekends **8.00am to 8.00pm**

**NEW MEMBERSHIP
OPTIONS AVAILABLE!**

We just launched new membership products aimed at making our facilities more accessible.

We're now offering off-peak memberships and Tertiary student memberships – speak to our customer service staff today to find out more!

Sport & Recreation
QUEENSTOWN LAKES DISTRICT COUNCIL

 qldc.govt.nz/recreation

Queenstown Events Centre | Joe O'Connell Drive, Frankton | T 03 450 9005 | E qec@qldc.govt.nz
Wānaka Recreation Centre | Sir Tim Wallis Drive, Three Parks | T 03 443 9334 | E wrc@qldc.govt.nz

DON'T PUT BATTERIES IN THE BIN

Never ever toss a battery in your rubbish or recycling bin. Batteries contain hazardous substances that can harm the environment. They also pose a fire risk and could set a waste collection truck alight or cause a fire to break out at our waste facilities or landfill.

WHERE CAN BATTERIES BE DROPPED OFF FOR RECYCLING?

- > Whakatipu Recycling Centre, 112 Glenda Drive, Frankton
- > Wānaka Transfer Station, Ballantyne Road, Wānaka
- > Mobile phones contain lithium ion batteries that can be hard to remove. Unwanted mobile phones can be dropped off free of charge at a Vodafone, Spark or 2Degrees retailer, who recycle these through Re:Mobile. Mobiles can also be dropped off as e-waste for recycling at the Wānaka and Frankton transfer stations (fees apply).

To learn more about ways to reduce the environmental impact of batteries, see www.qldc.govt.nz/services/rubbish-recycling/other-waste/batteries-fireworks



Flush it out

Did you know some plumbing fittings have the potential to allow minute traces of metals to accumulate in water standing in the fittings for several hours.

Although the health risk is small, the Ministry of Health recommends you flush a mugful of water from your drinking-water tap each morning before use to remove any metals that might have dissolved from the plumbing fittings.

We are recommending this simple precaution for all households, including those on public and private water supplies.



Celebrating our cultural diversity



We were delighted to launch a Māori, Pasifika and Newcomer Profile booklet as part of our Welcoming Communities Te Waharoa ki ngā Hapori programme in June.

This collection of profiles showcases the cultural diversity that adds character to our community. It was a rewarding project, collaborating with 21 community groups across the district.

The booklet offers a snapshot of each group, explaining how each was established and operates, and describing all the wonderful events and activities they run.

You'll find out how to connect with each group and learn more about them. We encourage those in the wider community to reach out to make connections and welcome newcomers in the district we share.

Booklets can be found at all the district's libraries and online at www.qldc.govt.nz/welcoming-communities.



Let's talk

Don't miss the opportunity to have your say!
Join loads of other locals signing up to get involved – head to letstalk.qldc.govt.nz and register today!



An update on key consultation topics happening in 2022. There are lots of important topics to talk about this year, so keep your eyes peeled for details on key projects we'll be seeking your input on.

CURRENT CONSULTATIONS:

LANDSCAPE SCHEDULES – VARIATION TO QUEENSTOWN LAKES PROPOSED DISTRICT PLAN

A variation to Chapter 21 Rural Zone of the Proposed District Plan, to introduce landscape schedules. These schedules set out the landscape values for 29 Priority Area landscapes across the Whakatipu Basin and Upper Clutha.

Status: Formal consultation underway. Submissions close 28 August 2022.

UPDATES ON RECENT CONSULTATION TOPICS:

QUEENSTOWN ARTS CENTRE BUILDING

A proposal to determine the future status of the Arts Centre building on Stanley Street.

Status: Council decision made on 11 August 2022. Check the Let's Talk page for details.

LAND DEVELOPMENT AND SUBDIVISION CODE OF PRACTICE

Stage 3 of an ongoing review of guidelines and minimum standards for land development and subdivision infrastructure.

Status: Submissions closed 14 August 2022.

PROPOSED DISPOSAL OF LAND AT 516 LADIES MILE HIGHWAY

Potential land disposal and tree removal to support a proposed new roundabout at Howards Drive.

Status: Submissions closed 5 August 2022. A submission hearing is to be confirmed.

QUEENSTOWN EVENTS CENTRE / FRANKTON GOLF CENTRE LAND DISPOSAL

Potential land disposal and reorientation of Frankton Golf Centre to support major intersection upgrade at SH6-6A.

Status: Submissions closed 14 July 2022, hearing held on 10 August 2022. Decision expected at September Council meeting.

INCREASED INVESTMENT IN CARDRONA WATER SUPPLY

Proposed increase to budget and debt recovery to invest in a community drinking water scheme for Cardrona Valley.

Status: Submission hearing held on 2 August 2022. Decision expected at September Council meeting.

BALLANTYNE ROAD RECREATION MASTERPLAN

Creating a plan to transform the old Ballantyne Road oxidation pond site into a community recreation hub.

Status: Early ideas being fed into some draft Masterplan options. Further community engagement expected in November 2022.

QLDC & SERVICE CENTRES

Queenstown Office:

10 Gorge Road
Private Bag 50072, Queenstown
Phone: 03 441 0499

Wānaka Office:

47 Ardmore Street, Wānaka
Phone: 03 443 0024

E-mail: services@qldc.govt.nz
www.qldc.govt.nz

Office Hours:

Weekdays 8.00am – 5.00pm

QUEENSTOWN EVENTS CENTRE

Arrowtown Athenaeum Hall
Queenstown Memorial Hall
Lake Hayes Pavilion
Lake Wānaka Centre
Alpine Aqualand
Alpine Health & Fitness
Sports fields

Phone: 03 450 9005

WĀNAKA RECREATION CENTRE

Wānaka Pool
Indoor Courts
Phone: 03 443 9334

TRANSFER STATIONS

Wakatipu: 110 Glenda Drive
Frankton Industrial Area
Phone: 03 348 5126
Upper Clutha: Cnr of Ballantyne
& Riverbank Roads
Phone: 03 348 6125

HARBOURMASTER

Report non-compliance of waterway rules by phone **03 441 0499** or email services@qldc.govt.nz

In an emergency on the water always **call 111**

LIBRARIES

For library opening hours and locations please head to codc-qldc.govt.nz

EDITOR: REBECCA PITTS

TO ADVERTISE CONTACT:

✉ rebecca.pitts@qldc.govt.nz
Feedback and ideas are welcome.

Sam White
✉ sam.white@qldc.govt.nz

Scuttlebutt is published bi-monthly by Queenstown Lakes District Council to inform ratepayers and residents of council activities.

SCUTTLEBUTT // AUG/SEP 2022 // ISSUE 150 // www.qldc.govt.nz

ISSN 1177-133X