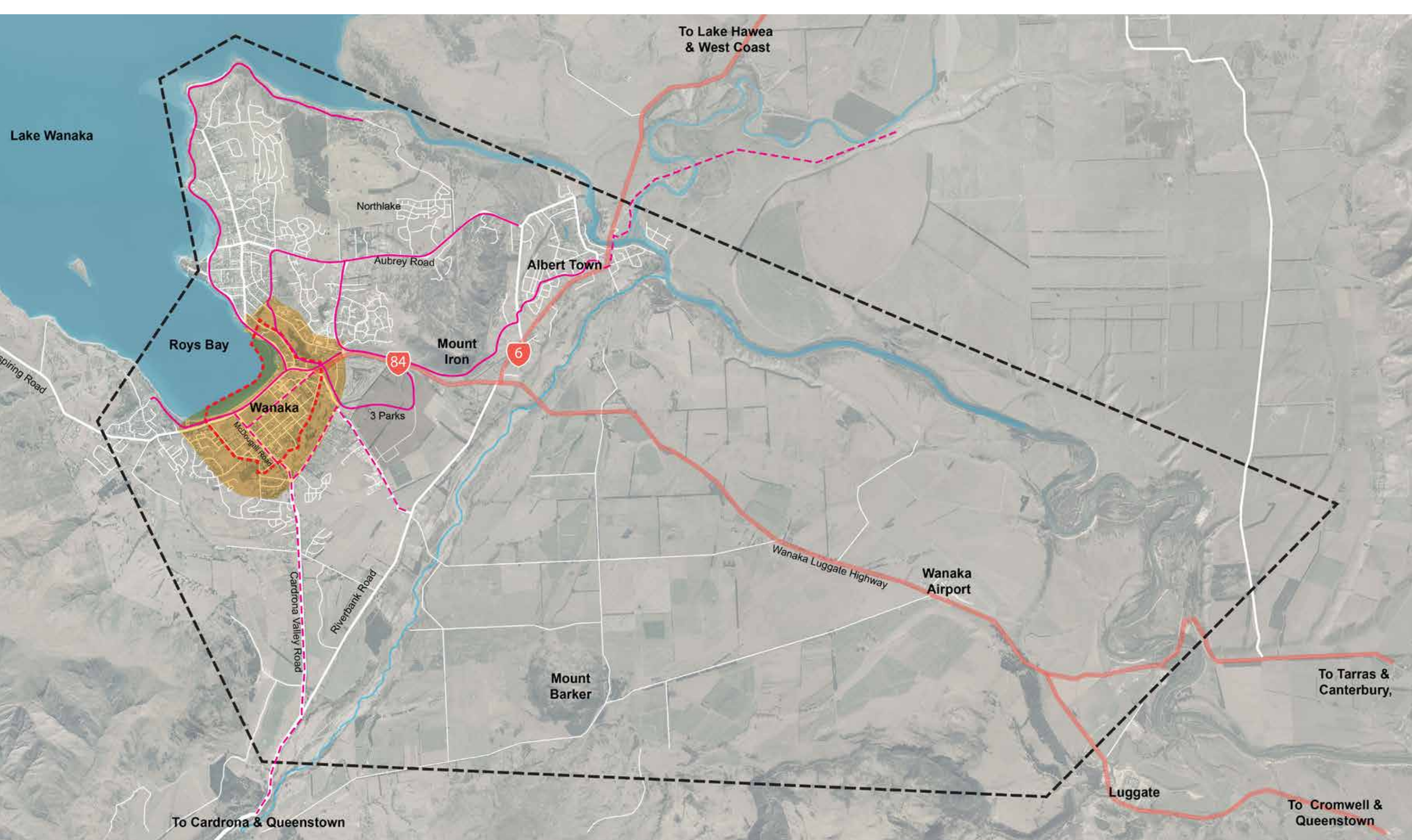


TRANSFORMING WANAKA

While the Masterplan project focuses on the town centre, it cannot be considered in isolation. There are a range of issues that will influence the success of a town centre transformation. We've outlined some of these for you to consider here.



YOU SAID YOU WANTED IMPROVED TRAVEL CHOICE

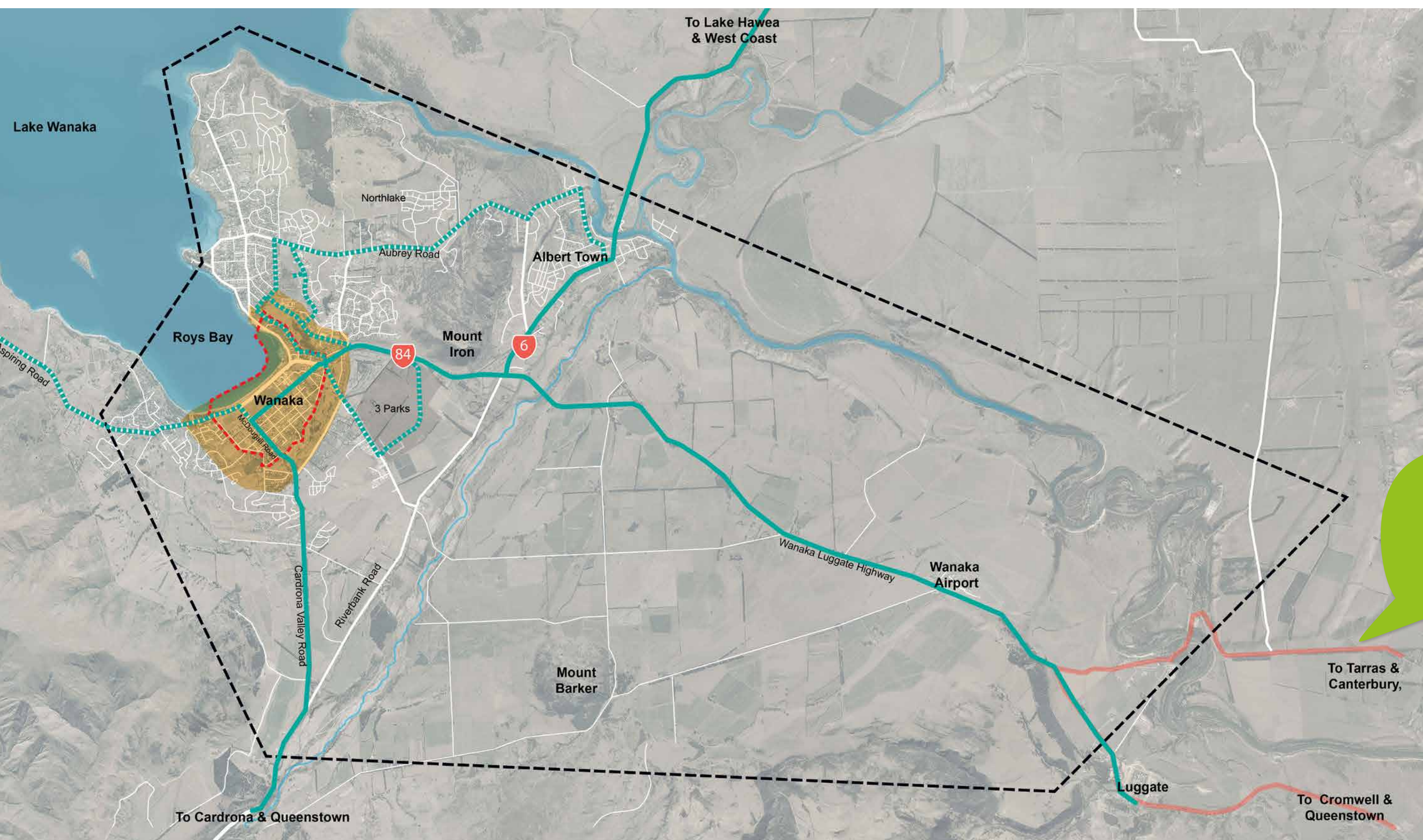
Wanaka's cycle network largely consists of off-road recreational trails and generally does not support commuter access to key activities and destinations. The state highway network creates a barrier to access between local schools and the new recreation centre. There is currently no public transport available to residents and visitors in Wanaka.

THE RESPONSE: A CYCLE NETWORK

The people of Wanaka have consistently said they want to see improved cycling facilities. To provide safe cycling facilities, decisions such as the removal of parking or changes to the road network or access may be required.

An indicative map of a potential cycle network for Wanaka is shown on the adjacent maps. We'll need to do further work and have more conversations with the community to determine the preferred routes and types of cycle facilities that will be constructed.

TRANSFORMING WANAKA

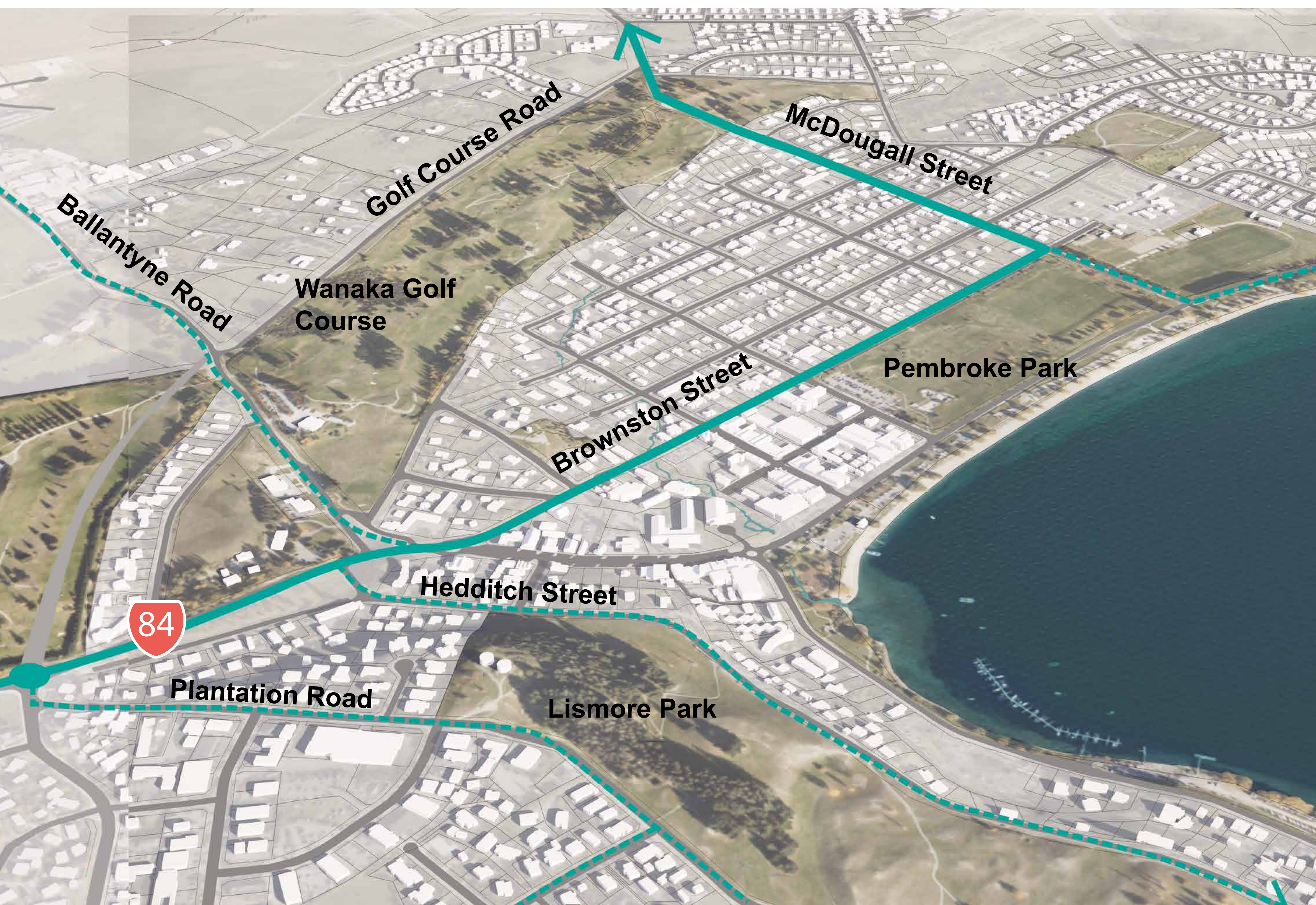


**YOU SAID
YOU WANTED
IMPROVED
TRAVEL CHOICE**

**THE RESPONSE:
A BUS NETWORK**

Wanaka is experiencing rapid growth, and some members of the community want a bus network to manage the negative effects of car dependency, traffic congestion and parking demand.

An indicative map of a possible future bus network that serves the residential areas of Wanaka, as well as routes connecting to the main outer settlements is shown on the adjacent maps. We'll continue to work with the Otago Regional Council (who operate the region's bus networks) to determine when a bus network in Wanaka might be feasible, and what form this takes.



TRANSFORMING WANAKA

YOU SAID YOU WANTED IMPROVED ACCESS AROUND THE WIDER WANAKA AREA

At the moment, many people need to travel through the town centre to get across town. This creates congestion and increases the safety risk to pedestrians and cyclists.

THE RESPONSE: NEW ROAD OPTIONS

The following additional road connections are being considered to provide improved connectivity across the wider Wanaka area:

- A)** Anderson Road to Cardrona Valley Road via Golf Course Road link
- B)** West Coast to Queenstown via Riverbank Road link
- C)** Wanaka Airport to Queenstown via Mt Barker Road

