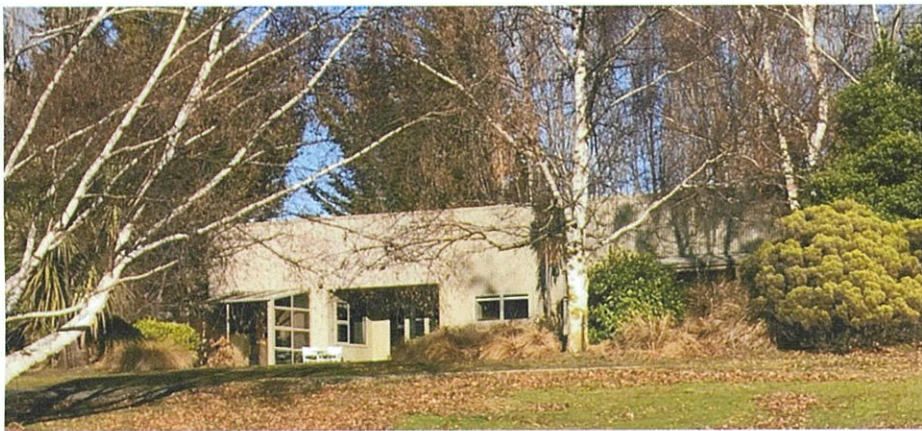


Example A – An area of MRZ that does not have the Millbrook suit of controls on it. Approval of buildings was therefore reserved to QLDC. Despite being located outside of the Residential Activity Zone QLDC approved the conversion of a former hay barn into a house and the addition of several small corrugated iron sheds without any consultation with Millbrook.



Example B – An example of a dwelling and landscape approved by the Millbrook Design Review Panel.

