

Appendix A

Graphic Attachment

Hawthenden Farm - Wanaka

Prepared for Hawthenden Ltd
by
Rough and Milne Landscape Architects

04 April 2017

24 Dungarvon Street
Level 1, Wanaka 9305

PO Box 349
Wanaka 9343
New Zealand

Tel +64 3 974 7940
hannah@roughandmilne.co.nz

rough & milne landscape architects

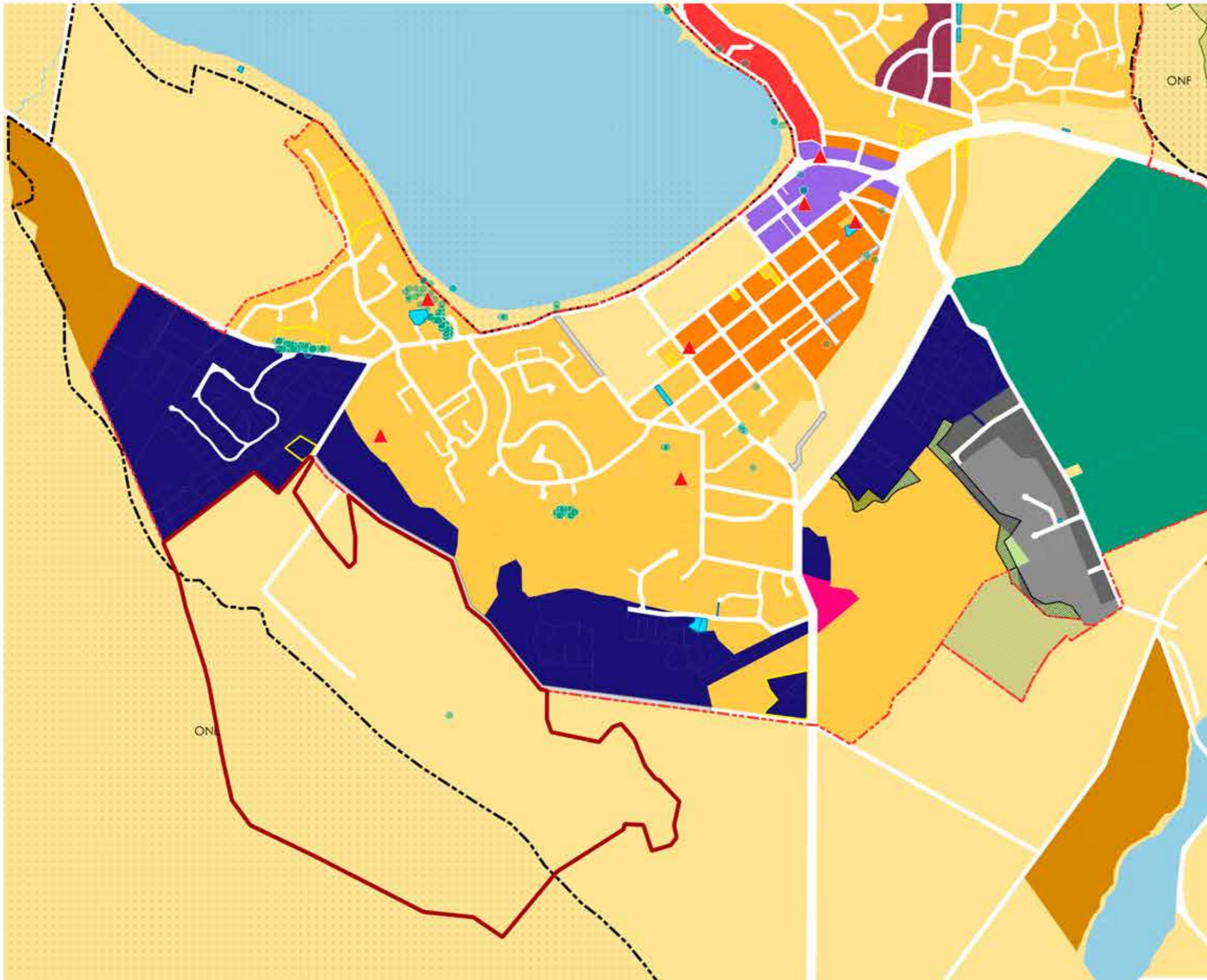


* This report is intended to be printed single sided in colour A3 landscape format



Scale: 1:250000 & 1:50000
Map/Aerial Photo Source: LINZ TOPO MAPS





Legend

- Hawthenden Farm Boundary
- Urban Growth Boundary
- Plan Change Boundary
- Visitor Accommodation Subzone
- Unformed Roads
- Designated Areas
- Potential Open Space (Stage 2 DP Review)
- Heritage Features
- Protected Trees
- Significant Natural Area

Proposed ONF

- ONF
- ONL

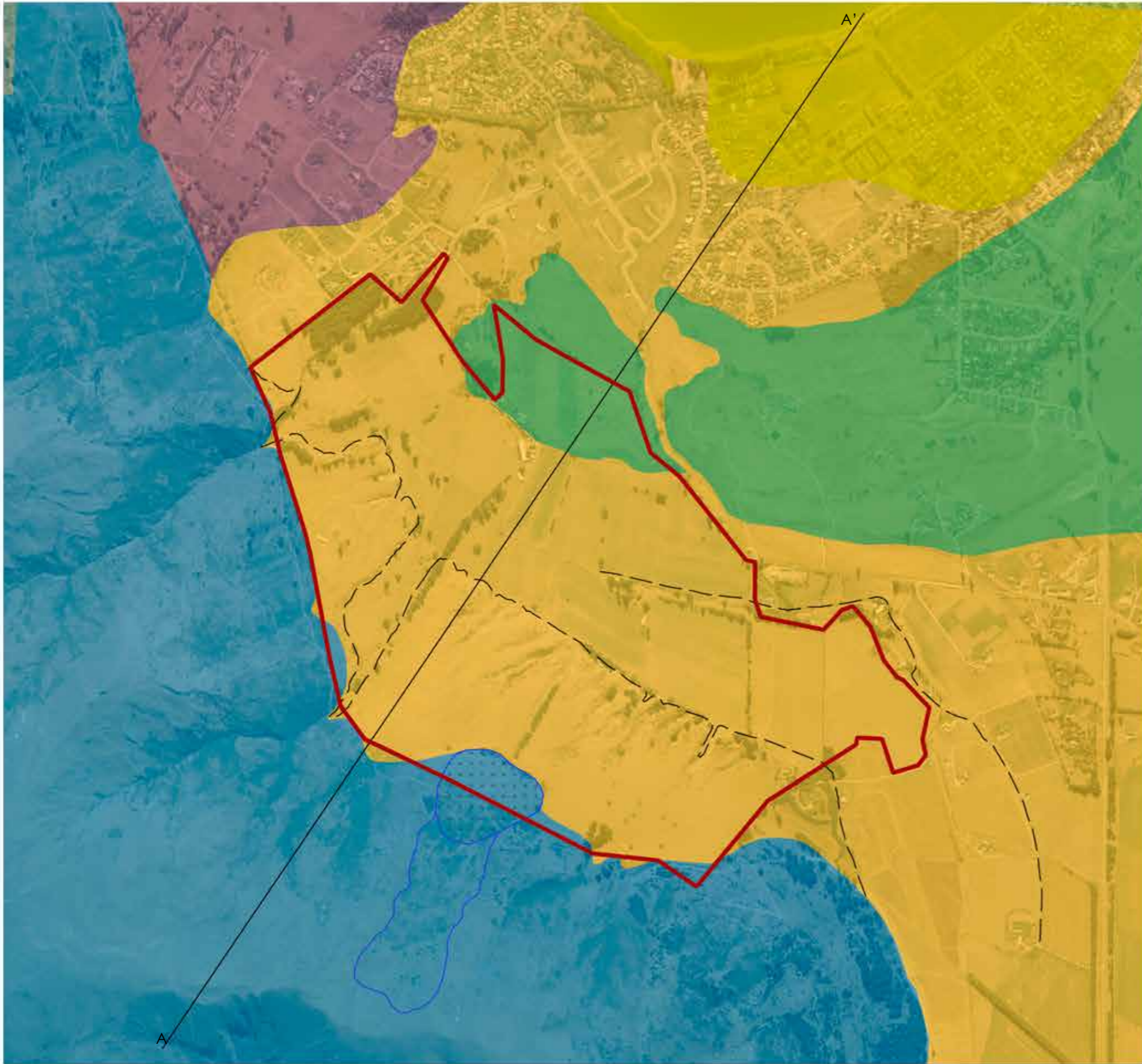
Proposed DP Zones

- High Density Residential
- Medium Density Residential
- Low Density Residential
- Local Shopping Centre
- Industrial A Zone (Operative)
- Industrial B (Operative)
- Large Lot Residential
- Mixed Business Use
- Rural Area
- Rural Generative (Operative)
- Rural Lifestyle
- Rural Residential
- Rural Residential (Operative)
- Special Zones
- Wanaka Town Centre
- Water

NORTH



Scale: 1:25000
Data Source: QLDC MAPS



Legend

- Hawthenden Farm Boundary
- Crosssection line
- Alluvial Terraces
- Landslide
- Lake deposits
- Schist
- Moraine
- Alluvials
- Undifferentiated alluvials and moraine

A'

Geology Cross Section

A

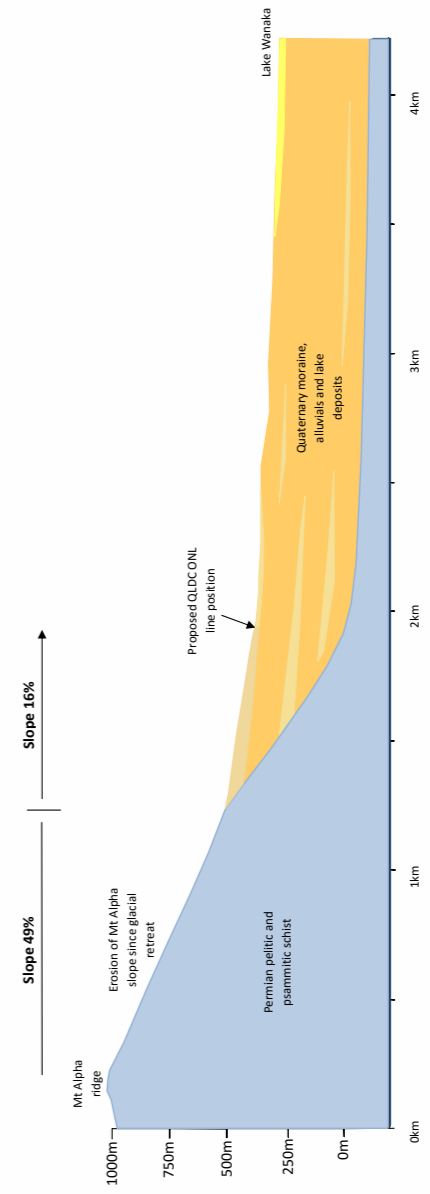
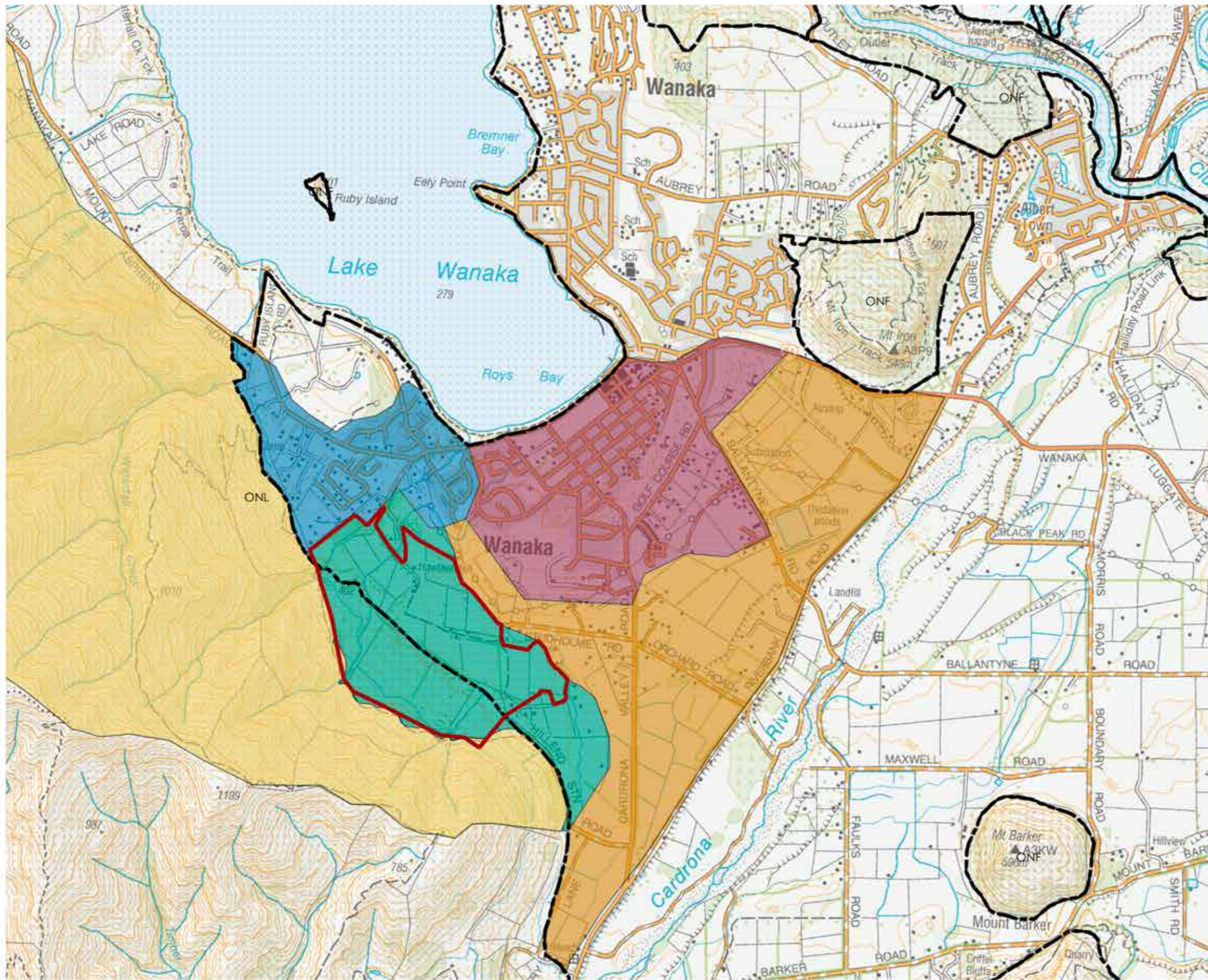


Figure 2. Geology cross section from the Mt. Alpha ridge across the Hawthenden farm to Lake Wanaka, view looking NW. For location refer to figure 1.



Scale: 1:20000
 Aerial Image Source: LINZ AERIAL
 Data Source: GEOLOGIST STEVE LEARY



Legend

Hawthenden Farm Boundary

Landscape Classification

Existing ONF

Existing ONL

Landscape Character Areas

- LCA 1: The Alpha Range Mountainside
- LCA 2: Hawthenden Farm Alluvial Fans and Terraces
- LCA 3: Developed Alluvial Fans and Terraces
- LCA 4: Wanaka Rural Valley Floor
- LCA 5: Wanaka Urban Valley Floor

NORTH



Scale: 1:50000
 Map/Aerial Photo Source: LINZ TOPO50
 Data Source: GLDC MAPS

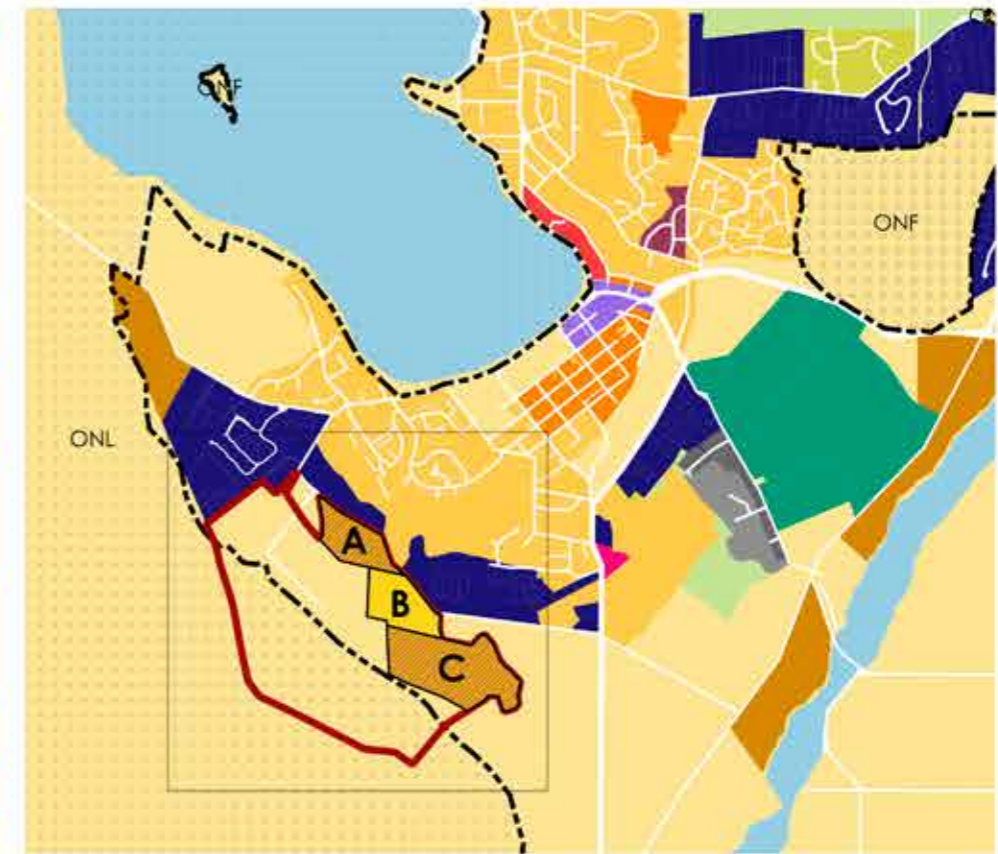
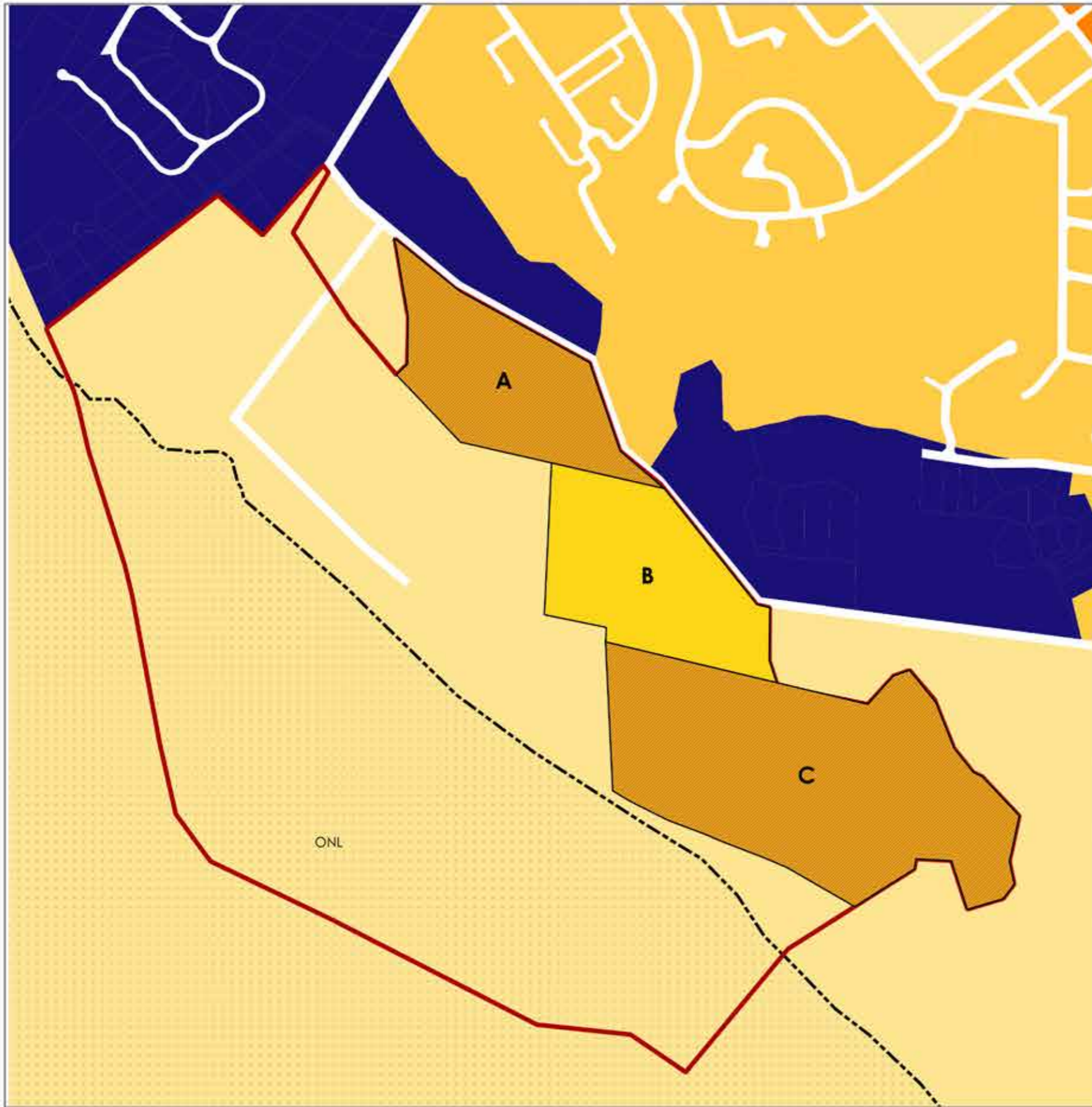


Legend

- Hawthenden Farm Boundary
- Landscape Classification**
- Existing ONL
- Proposed ONL
- A Rezone Area A (Potential RL Zone)
- B Rezoned Area B (Potential RR Zone)
- C Rezoned Area C (Potential RL Zone)



Scale: 1:15000
 Map/Aerial Photo Source: LINZ AERIAL
 Data Source: GLDC MAPS



Legend

Hawthenden Farm Boundary

Proposed Zoning

- Area A
- Area B
- Area C

Landscape Classification

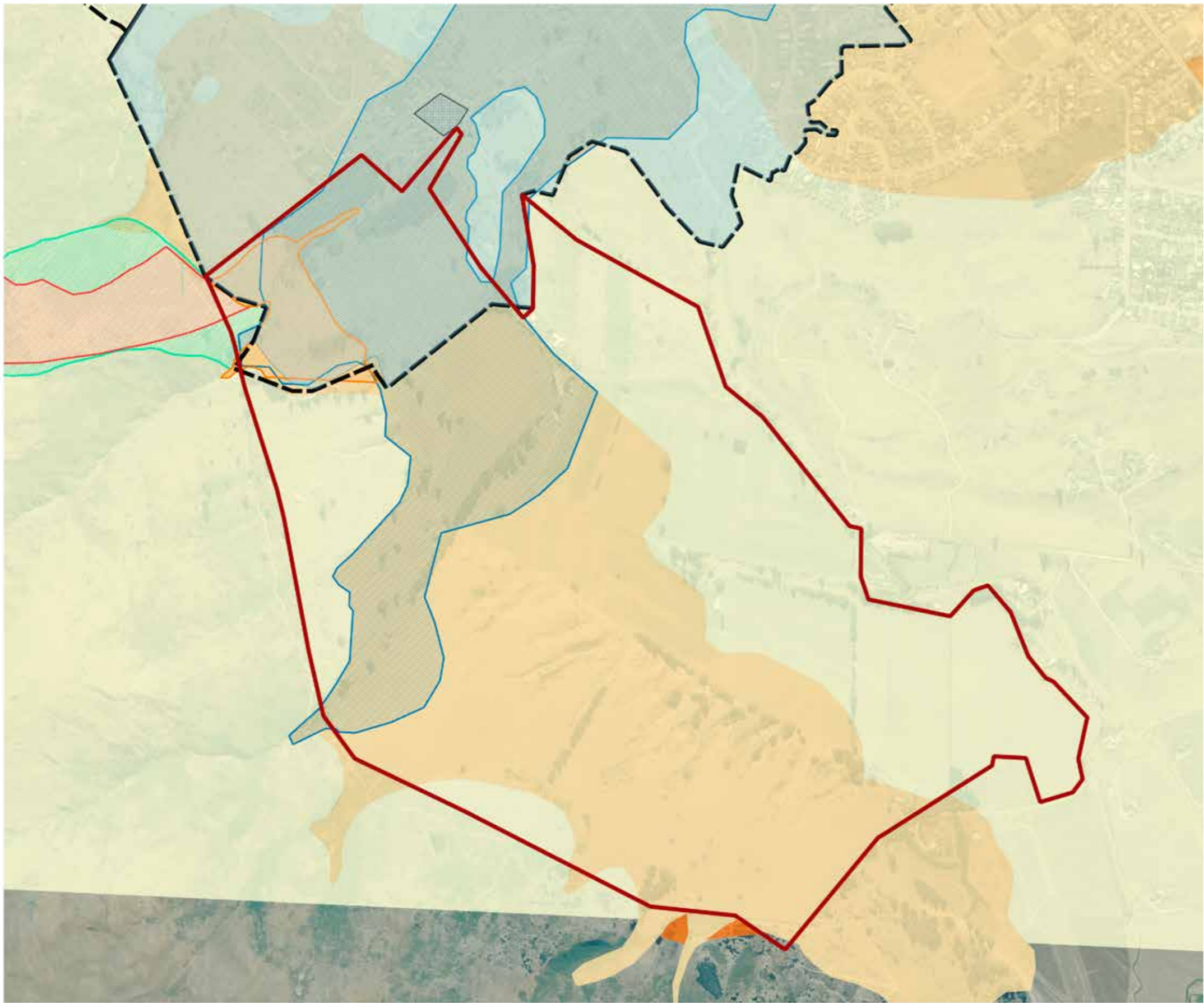
- Existing ONF
- Existing ONL

Zones

- High Density Residential
- Industrial A Zone (Operative)
- Industrial B (Operative)
- Large Lot Residential
- Local Shopping Centre
- Low Density Residential
- Medium Density Residential
- Mixed Business Use
- Open Space
- Rural Area
- Rural Generative (Operative)
- Rural Lifestyle
- Rural Residential
- Rural Residential (Operative)
- Special Zones
- Wanaka Town Centre
- Water



Scale: 1:15000 & 1:75000
Map/Aerial Photo Source: LINZ AERIAL



Legend

- Hawthenden Farm Boundary
- Erosion Areas
- Alluvial Fan High Hazard Area
- Flooding from rainfall

Liquefaction Risk

- Nil to Low
- Probably Low
- Possibly Low
- Possibly Susceptible

Landslide Areas

- Active Schist Debris Landslides
- Dormant/Slowly Creeping Pre-existing Schist Debris Landslides
- Potential Hazard - Debris Flood/Debris Flow
- Potential Hazard - Debris Flow

NORTH



Scale: 1:15000
 Map/Aerial Photo Source: LINZ AERIAL
 Data Source: QLDC MAPS



Photograph 1 - View overlooking Wanaka from the top of Mt Iron; the Mt Alpha range dominates the south-western backdrop to Wanaka.



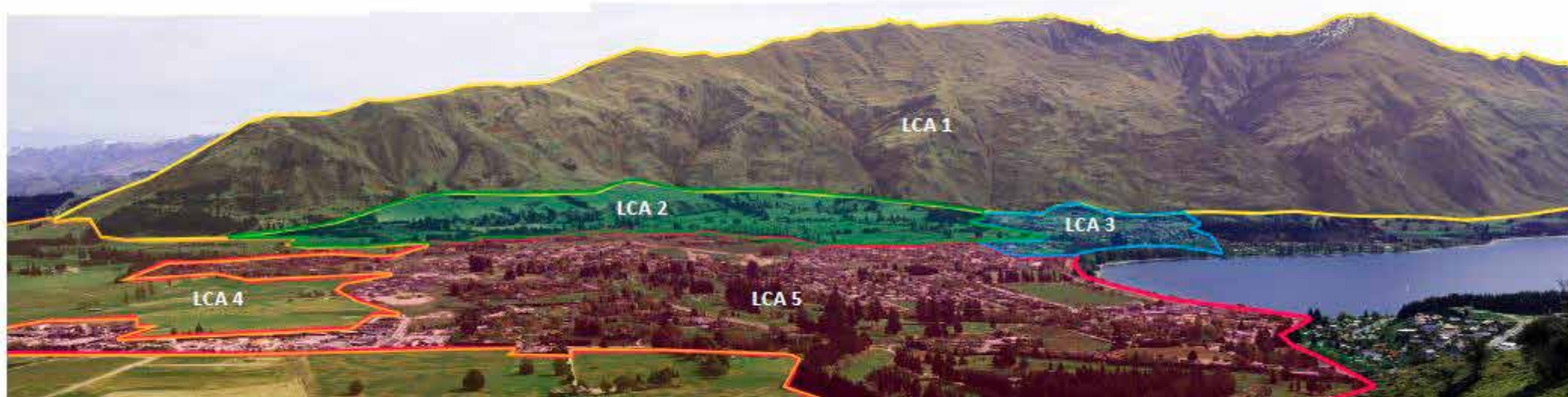
Photograph 2 - View from the upper slopes of Hawthenden Farm overlooking the farm, the settlement of Wanaka and the glaciated landscapes of the Upper Clutha Valley.



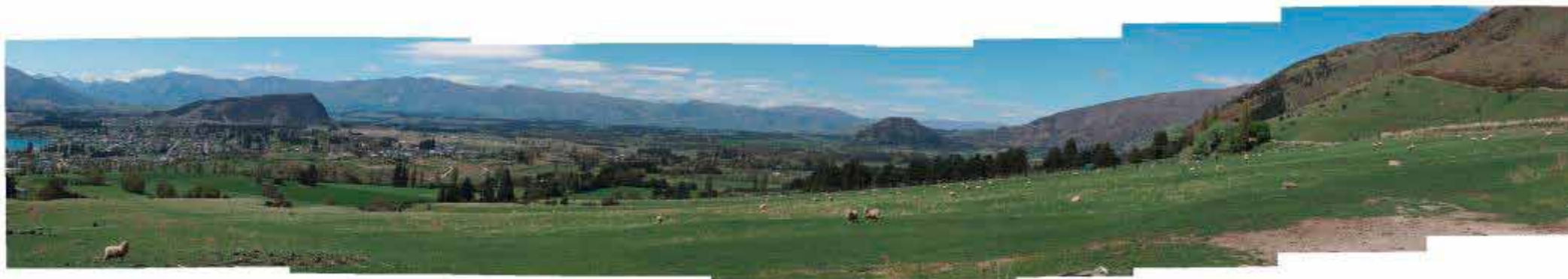
Photograph 3 - Historic dairy shed on Hawthenden Farm thought to be constructed around 1890



Photograph 4 - View from Mt Iron of Hawthenden Farm (boundary indicated as solid line where visible) indicating current ONL Line (shown as dashed line)



Photograph 5 - View From Mt Iron indicating Landscape Character Areas (LCAs) relating to Hawthenden Farm (indicative)



Photograph 6 - View across Hawthenden Farm from the top of the Mt Alpha Fan demonstrating the pastoral landscape character of LCA 2.



Photograph 7 - View of Hawthenden Farm from Cardona Valley Road (near Oakridge Resort), with suggested ONL line indicated as dashed line.

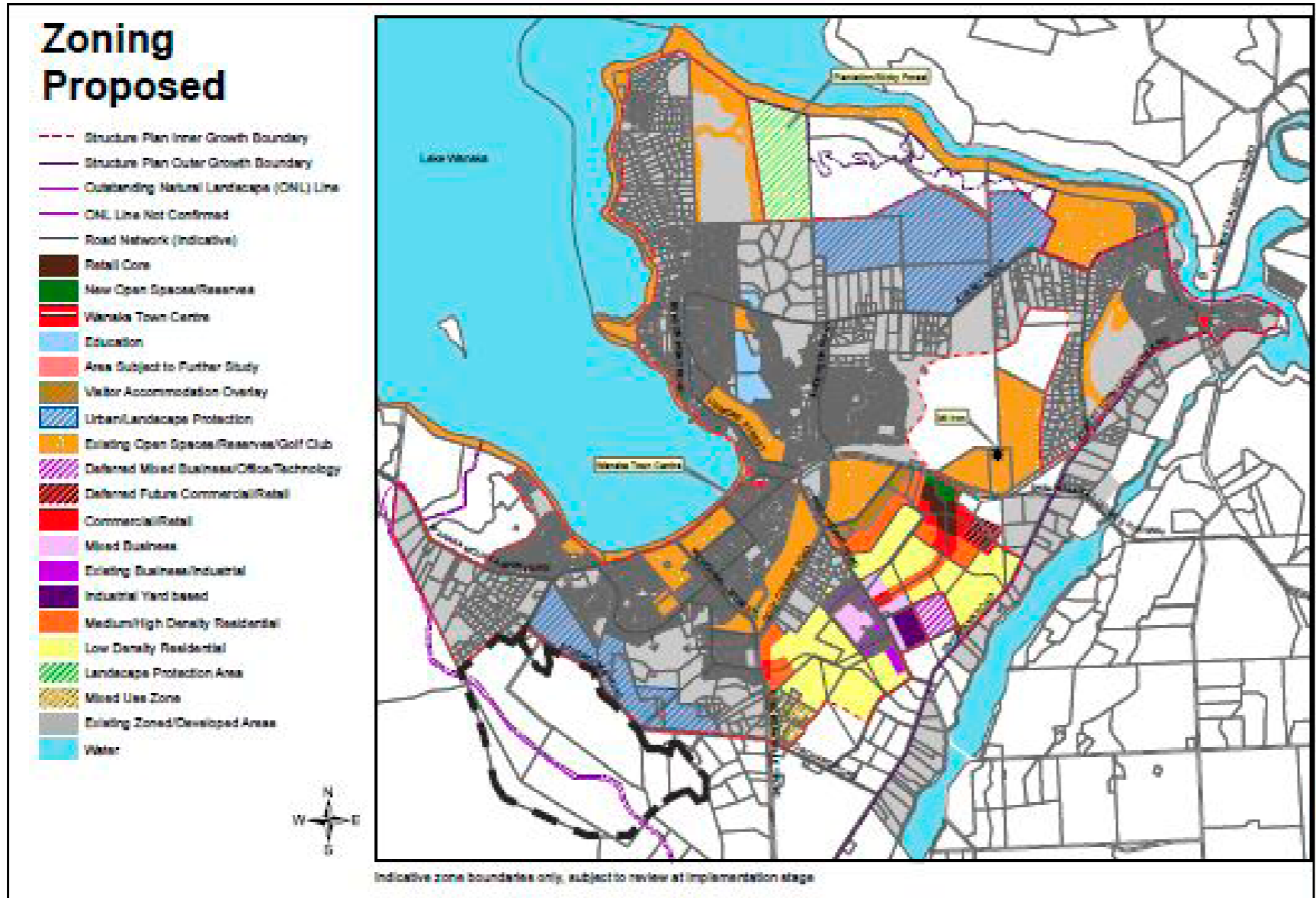


Figure 1 - Wanaka Structure Plan (2007) with Hawthenden Farm boundary shown as dashed black line