

ANNEXURE A

CERTIFICATES OF TITLE

<i>Title identifier</i>	<i>Legal Description</i>	<i>Area</i>
17563	Lot 5, Deposited Plan 25644 and Lot 26 Deposited Plan 304345	17.1530ha
17558	Lots 6 & 27 Deposited Plan 304345	47.0323ha
347189	Lot 8, 386734 and Lots 7, 24-25 Deposited Plan 304345	41.7064ha
OT17A/956	Lot 6, Deposited Plan 25112	0.8000 ha
OT17C/1175	Lot 2, Deposited Plan 25643	9.2862ha
OT17C/1182	Lot 108, Deposited Plan 25645	0.1024 ha
OT17C/1183	Lot 109, Deposited Plan 25645	0.1101 ha



**COMPUTER FREEHOLD REGISTER
UNDER LAND TRANSFER ACT 1952**



Search Copy


R. W. Muir
Registrar-General
of Land

Identifier 17563
Land Registration District Otago
Date Issued 03 November 2006

Prior References

1640 OT17C/1179

Estate Fee Simple
Area 17.1530 hectares more or less
Legal Description Lot 5 Deposited Plan 25644 and Lot 26
Deposited Plan 304345

Proprietors

Remarkables Park Limited

Interests

Land Covenant in Deed 5285272.3 - 17.7.2002 at 9:00 am (affects Lot 26)
Land Covenant in Easement Instrument 6642552.1 - 10.11.2005 at 9:00 am (affects Lot 26)
Land Covenant in Easement Instrument 6863718.3 - 12.5.2006 at 11:15 am (affects Lot 26)
Land Covenant in Easement Instrument 7067811.18 - 12.10.2006 at 9:00 am (affects Lot 26)
Subject to Section 241(2) Resource Management Act 1991 (affects DP 304345)
Land Covenant in Easement Instrument 7098676.34 - 3.11.2006 at 9:00 am
Land Covenant in Easement Instrument 7098676.36 - 3.11.2006 at 9:00 am
Land Covenant in Easement Instrument 7098676.38 - 3.11.2006 at 9:00 am
7098676.43 Mortgage to ASB Bank Limited - 3.11.2006 at 9:00 am
Land Covenant in Transfer 7596490.2 - 31.10.2007 at 9:00 am

Title Diagram diagra

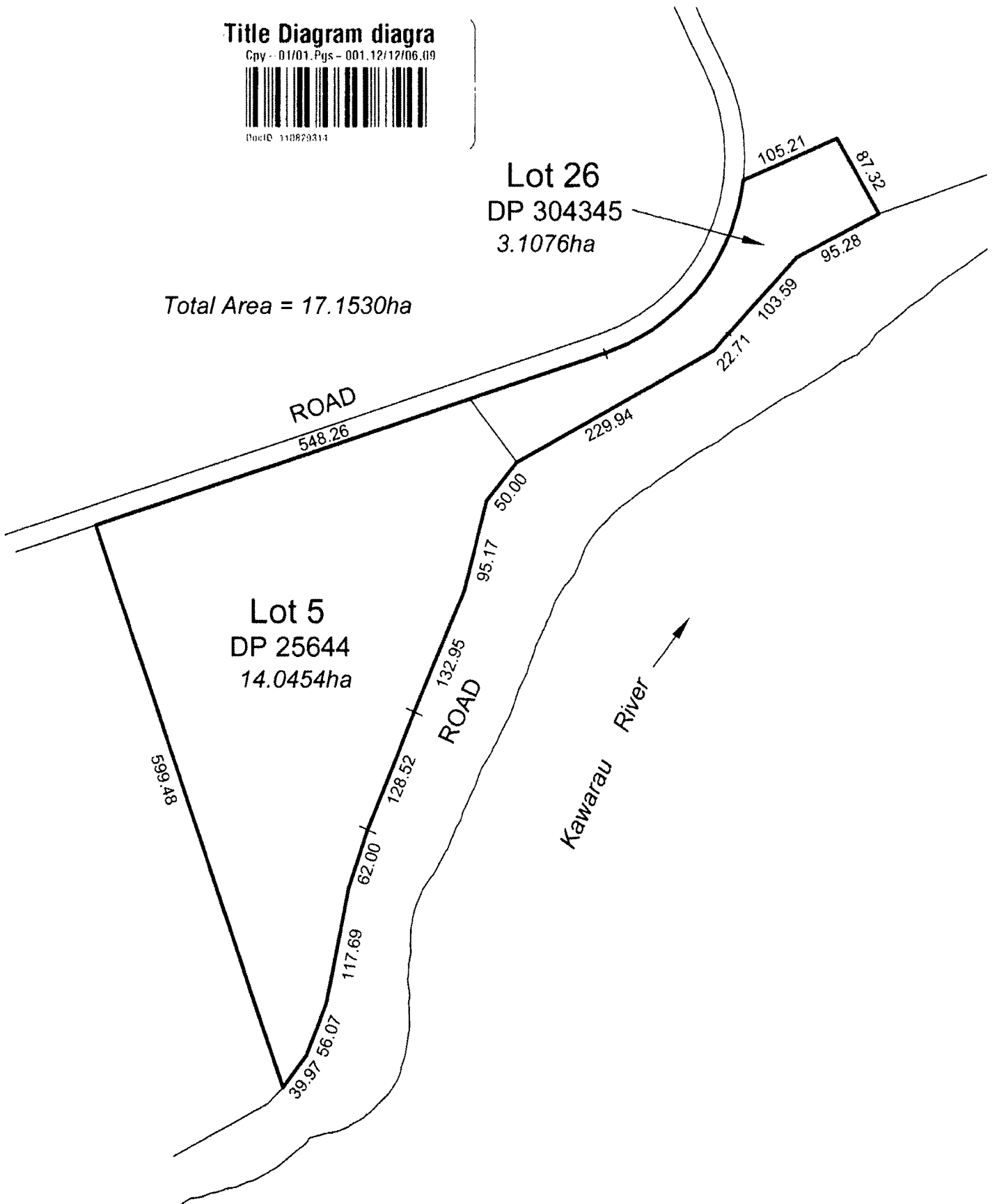
Cpy - 01/01.Pgs - 001,12/12/06,09

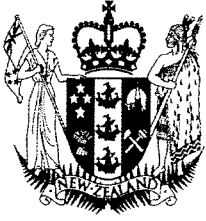


DocID 110829313

Lot 26
DP 304345
3.1076ha

Total Area = 17.1530ha





**COMPUTER FREEHOLD REGISTER
UNDER LAND TRANSFER ACT 1952**



Search Copy


R. W. Muir
Registrar-General
of Land

Identifier 17558
Land Registration District Otago
Date Issued 03 November 2006

Prior References

1640 OT14A/1069

Estate Fee Simple
Area 47.0323 hectares more or less
Legal Description Lot 6, 27 Deposited Plan 304345

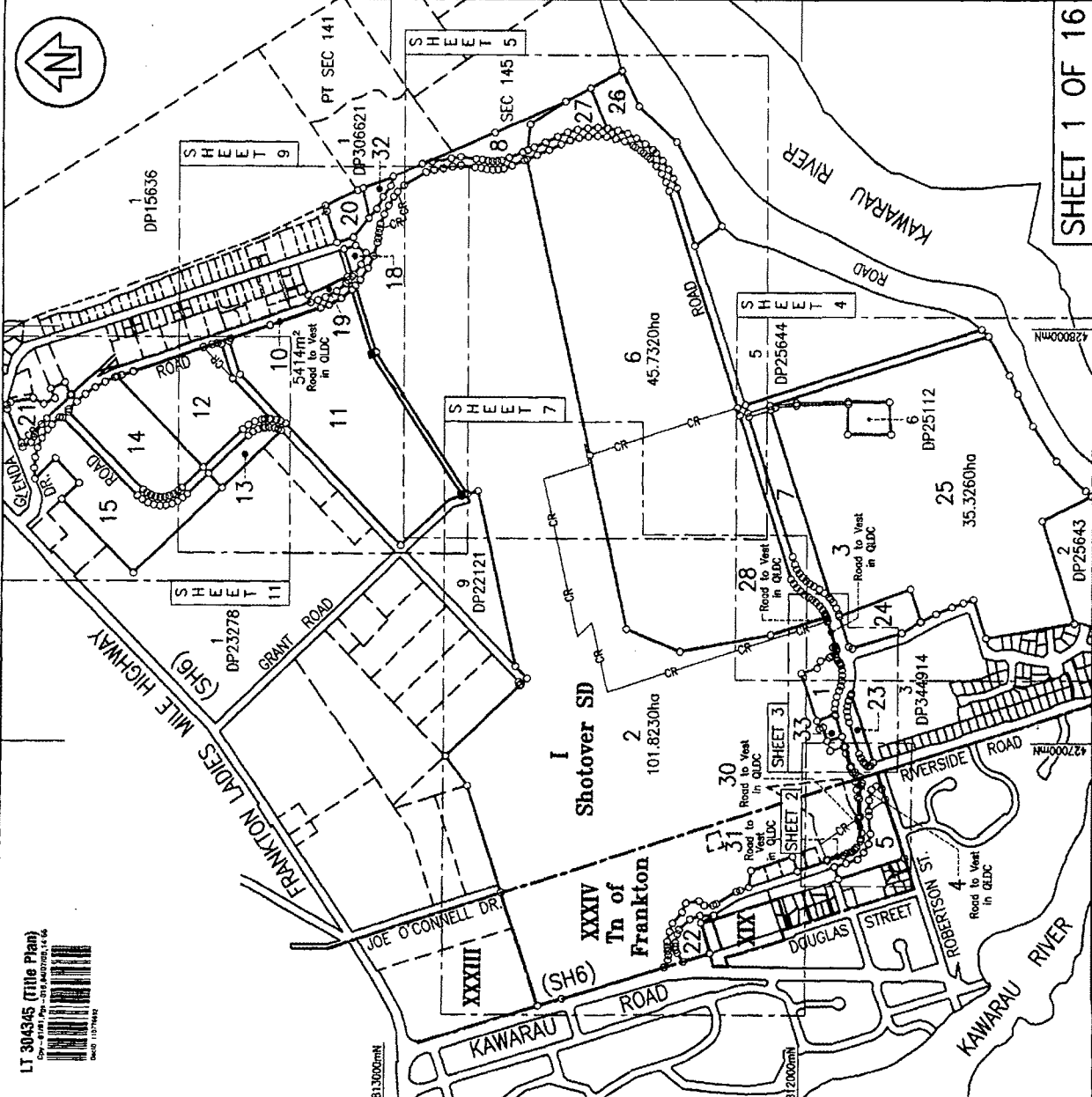
Proprietors

Remarkables Park Limited

Interests

Subject to Section 8 Coal Mines Amendment Act 1950 (affects that part of Lot 6 formerly Section 161 Block I Shotover SD)
Land Covenant in Deed 5285272.3 - 17.7.2002 at 9:00 am (affects the part formerly CT 1640)
Land Covenant in Easement Instrument 6642552.1 - 10.11.2005 at 9:00 am (affects the part formerly CT 1640)
Land Covenant in Easement Instrument 6863718.3 - 12.5.2006 at 11:15 am (affects the part formerly CT 1640)
Land Covenant in Easement Instrument 7067811.18 - 12.10.2006 at 9:00 am (affects the part formerly CT 1640)
7098676.2 Consent Notice pursuant to Section 221 Resource Management Act 1991 - 3.11.2006 at 9:00 am
Subject to Section 241(2) Resource Management Act 1991 (affects DP 304345)
Land Covenant in Easement Instrument 7098676.32 - 3.11.2006 at 9:00 am
Land Covenant in Easement Instrument 7098676.33 - 3.11.2006 at 9:00 am
Land Covenant in Easement Instrument 7098676.35 - 3.11.2006 at 9:00 am
Land Covenant in Easement Instrument 7098676.37 - 3.11.2006 at 9:00 am
Land Covenant in Transfer 7596490.2 - 31.10.2007 at 9:00 am
7940955.6 Mortgage to ASB Bank Limited - 30.9.2008 at 12:41 pm

LT 304345 (Title Plan)
 Date: 11/27/2005
 Sheet: 11/27/2005



SHEET 1 OF 16

LAND DISTRICT.....OTAGO.

LOTS 1-8, 10-15, 18-28 & 30-33 inc. BEING A SUBDIVISION OF PT. SEC. 166 BLK 1 SHOTOVER SD. LOT 4 DP12475, LOT 1 DP12550, LOT 1 DP17314, LOTS 1 & 2 DP17755, PT. LOT 1 & LOTS 3-5 DP22121, LOTS 1 & 2 DP22194, PT. LOTS 1-3 DP25245, PT. LOT 1 DP25634, PT. LOT 4 DP25644, LOT 2 DP27577, LOTS 1, 5 & 6 DP27578, LOTS 1 & 4 DP27775, LOTS 4-8 DP30017, LOTS 1 & 2 DP337572 & SEC'S 1-6 & 10 S024763

TERRITORIAL AUTHORITY: QUEENSTOWN LAKES DIST
 Surveyed by: **Apex Surveying Ltd** (1009)
 Scale: 1:7500 Date: JULY 2005

Approvals

I HEREBY CERTIFY THAT THIS PLAN WAS APPROVED BY THE QUEENSTOWN LAKES DISTRICT COUNCIL PURSUANT TO SECTION 223 OF THE RESOURCE MANAGEMENT ACT ON THE DAY OF 13/11/2005.

SUBJECT TO THE GRANTING OR RESERVING OF THE EASEMENTS SET OUT IN THE MEMORANDUMS HEREON AND SUBJECT TO THE AMALGAMATION CONDITIONS SET OUT HEREON.

CHIEF EXECUTIVE OFFICER RM050958

MEMORANDUM OF EASEMENTS

PURPOSE	SHOWN	SERVIENT TENEMENT	DOMINANT TENEMENT
RIGHT OF WAY TO TRANSMIT ELECTRICITY, TELECOMMUNICATIONS & COMPUTER MEDIA	(AA) (AB) (AC)	Lot 2 Hereon	Lots 1 & 33 Hereon
RIGHT TO CONVEY GAS TO USE IN WATER & SEWAGE	(K)	Lot 7 Hereon	Lot 6 DP-25112
RIGHT TO CONVEY WATER & SEWAGE	(L)	Lot 26 Hereon	Lot 6 DP-25112

MEMORANDUM OF EASEMENTS IN GROSS

PURPOSE	SHOWN	SERVIENT TENEMENT	GRANTEE
RIGHT TO DRAIN SEWAGE	(A) (I)	Lot 2 Hereon	QUEENSTOWN LAKES DISTRICT COUNCIL
RIGHT TO CONVEY WATER	(AB) (J)	Lot 2 Hereon	IRRIGATION COMPART LIMITED
RIGHT TO CONVEY WATER	(D) (L)	Lot 2 Hereon	IRRIGATION COMPART LIMITED

Class of Survey 1

Total Area.....232.1509 ha.

Comprised in...OR's. 0114/1069...0119/1148, 1640, 1651, 28340, 28341, 11435, 154283

I, KETRY FREDERICK BERTON, being a person entitled to practice as a cadastral surveyor, certify that the above, and the plans and documents to which they refer, are accurate, and were undertaken by me or under my direction in accordance with the Cadastral Survey Act 2002 and the Surveyor General's Rules for Cadastral Survey 2002/2.

(b) The document is accurate, and has been created in accordance with that Act and those Rules.

Dated at ALBANY this 13th day of Nov. 2005

Signature: [Signature] p. Traverse Book: p.

Reference Plans: p.

Examined: Correct.

Approved as to Survey by Land Information NZ on 5/11/2006

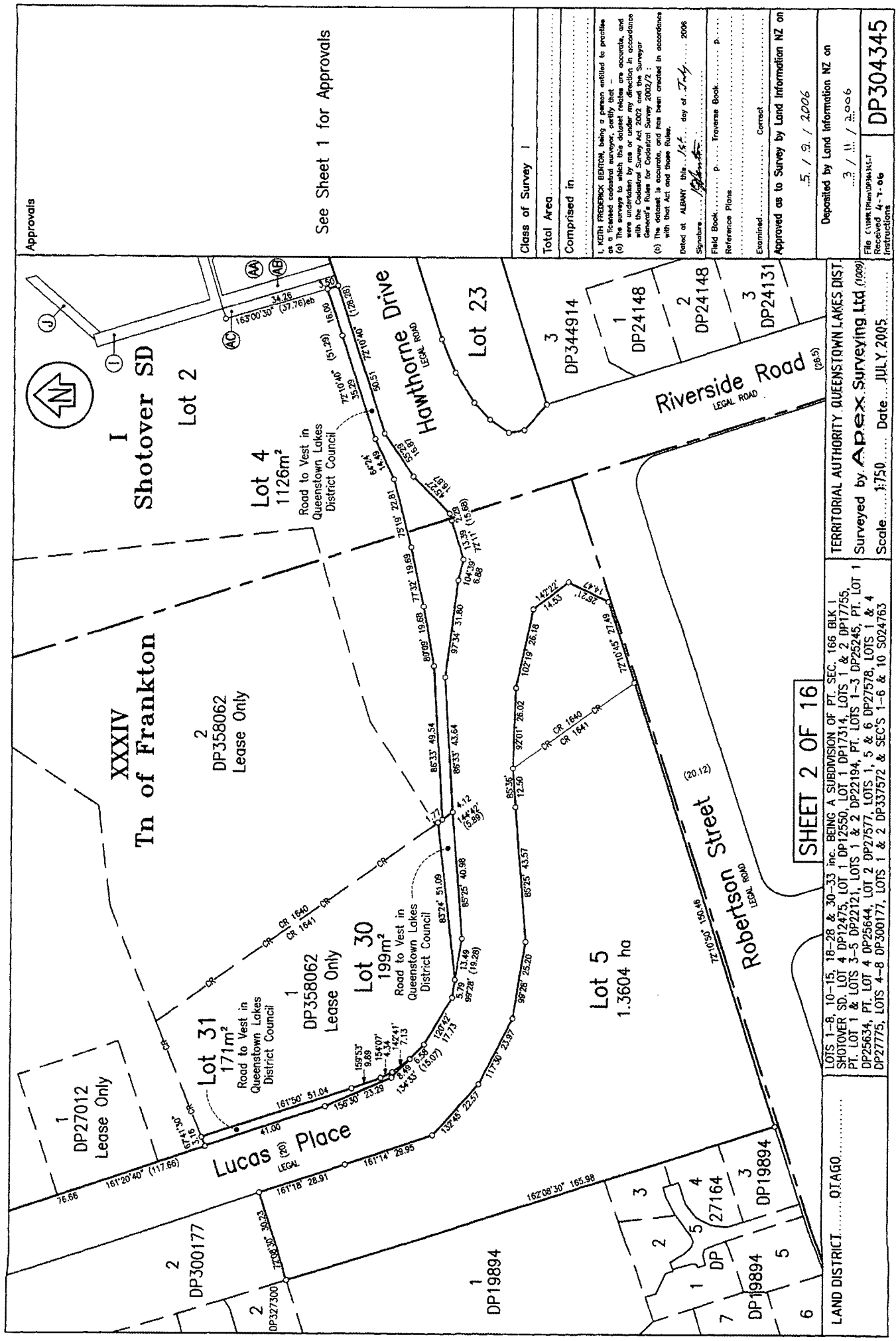
Deposited by Land Information NZ on 3/11/2006

Received 4-7-06

Instructions DP304345

Approvals

See Sheet 1 for Approvals



XXXIV
Tn of Frankton

I
Shotover SD

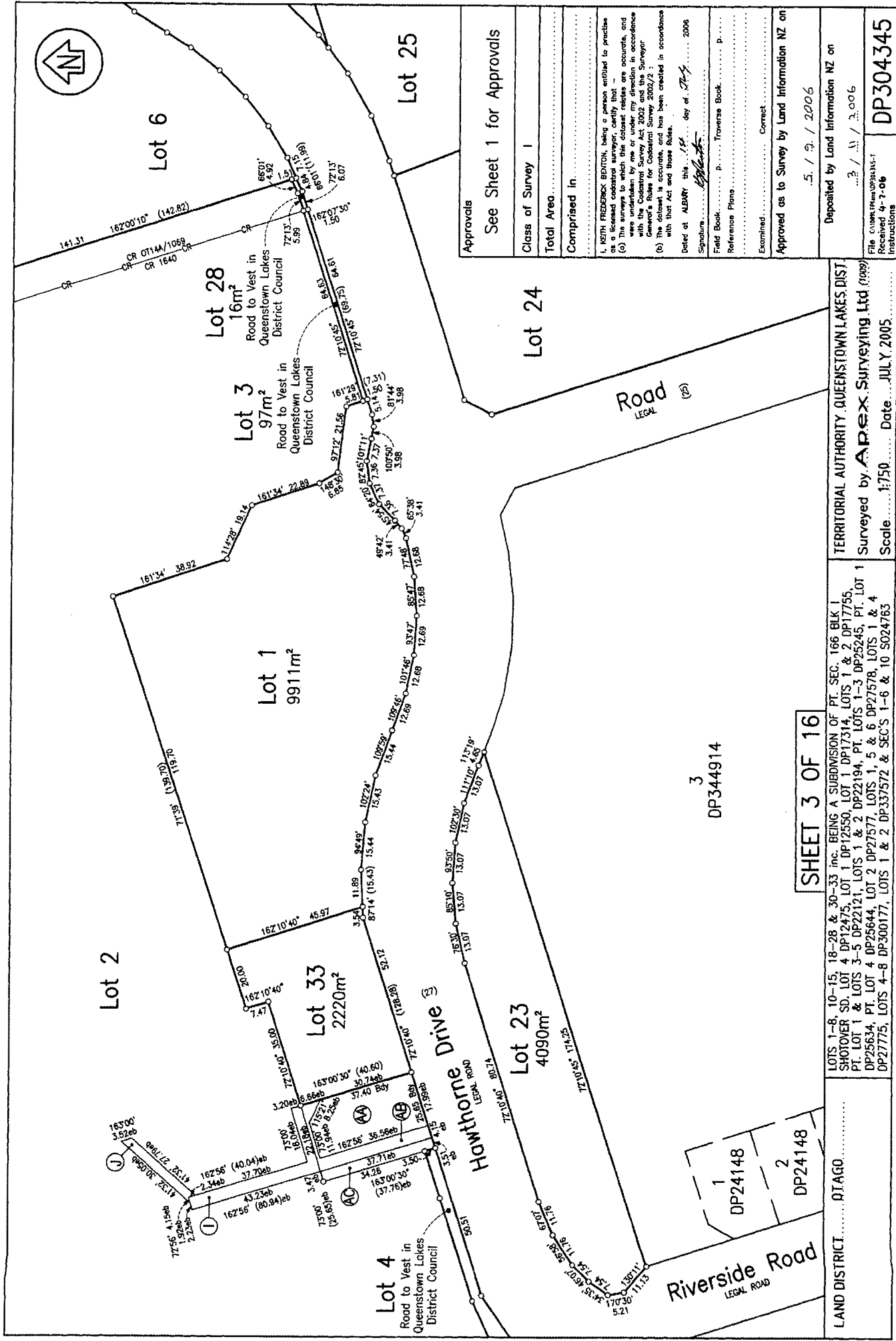
SHEET 2 OF 16

TERRITORIAL AUTHORITY: QUEENSTOWN LAKES DIST.
 Surveyed by: **Apex Surveying Ltd** (9099)
 Scale: 1:750 Date: JULY 2005

LOTS 1-8, 10-15, 18-28 & 30-33 inc. BEING A SUBDIVISION OF PT. SEC. 186 B/LK 1 SHOTOVER SD, LOT 4 DP12550, LOT 1 DP17314, LOTS 1 & 2 DP17755, PT. LOT 1 & LOTS 3-5 DP22121, LOTS 1 & 2 DP22194, PT. LOTS 1-3 DP25245; PT. LOT 1 DP25634, PT. LOT 4 DP25644, LOT 2 DP27577, LOTS 1, 5 & 6 DP27578, LOTS 1 & 4 DP27775, LOTS 4-8 DP300177, LOTS 1 & 2 DP337572 & SECS 1-6 & 10 S024763

LAND DISTRICT: Otago

Class of Survey	I
Total Area	
Comprised in	
I, KETH FREEDERICK BERTON, being a person entitled to practice as a licensed cadastral surveyor, do hereby certify that the surveys to which this document relates are accurate, and were undertaken by me or under my direction in accordance with the Cadastral Survey Act 2002 and the Surveyor-General's Rules for Cadastral Survey 2002/2.	
(b) The dataset is accurate, and has been created in accordance with that Act and those Rules.	
Dated at	ALBANY this 15th day of July 2006
Signature	<i>[Signature]</i>
Field Book	P. Traverse Book
Reference Plans	
Examined	Correct
Approved as to Survey by Land Information NZ on	5 / 9 / 2006
Deposited by Land Information NZ on	3 / 11 / 2006
File Number	DP304345
Received	4-7-06
Instructions	



Approvals See Sheet 1 for Approvals
Class of Survey I
Total Area
Comprised in
I, KEITH FREDERICK BENTON, being a person entitled to practise as a licensed cadastral surveyor, certify that (a) The surveys to which this document relates are accurate, and were undertaken by me or under my direction in accordance with the Cadastral Survey Act 2002 and the Surveyor-General's Rules for Cadastral Survey 2002/2; (b) The dataset is accurate, and has been created in accordance with that Act and those Rules.
Dated at ALBANY this 15th day of July 2005
Signature: <i>[Signature]</i>
Field Book: p. Traverse Book. p.
Reference Plane: Correct
Examined: Correct
Approved as to Survey by Land Information NZ on 5 / 9 / 2005

Deposited by Land Information NZ on
3 / 11 / 2006
File number: LON345-1
Received 4-7-06
Instructions: DP304345

SHEET 3 OF 16

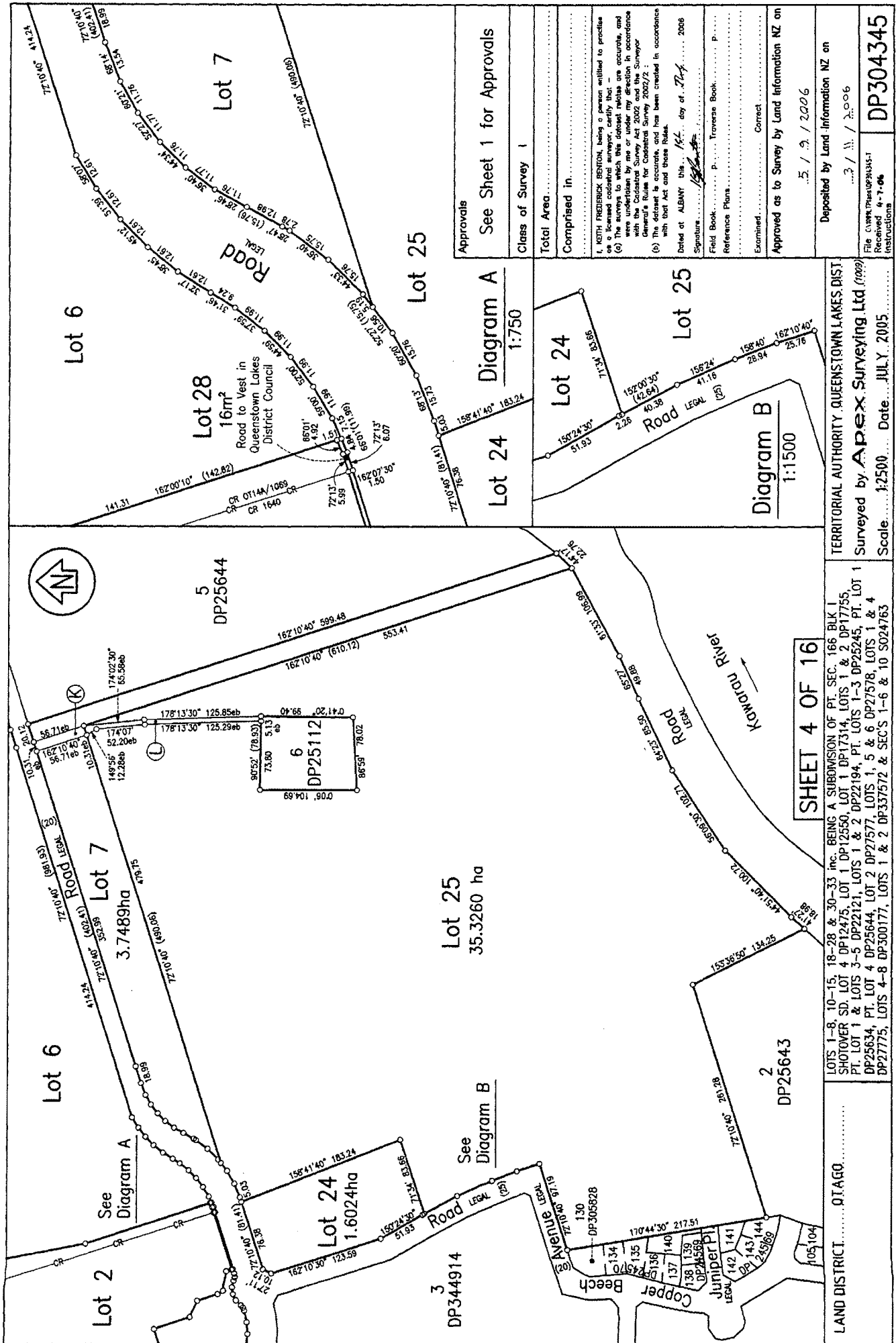
TERRITORIAL AUTHORITY: QUEENSTOWN LAKES DIST.
Surveyed by: **Apex Surveying Ltd** (1999)
Scale: 1:750 Date: JULY 2005

LOTS 1-8, 10-15, 18-28 & 30-33 inc. BEING A SUBDIVISION OF PT. SEC. 166 BLK 1 SHOTOVER SD, LOT 4 DP12475, LOT 1 DP12550, LOT 1 DP17314, LOTS 1 & 2 DP17755, PT. LOT 1 & LOTS 3-5 DP22121, LOTS 1 & 2 DP22194, PT. LOTS 1-3, DP25245, PT. LOT 1 DP25634, PT. LOT 4 DP25644, LOT 2 DP27577, LOTS 1, 5 & 6 DP27578, LOTS 1 & 4 DP27775, LOTS 4-8 DP300177, LOTS 1 & 2 DP3337572 & SEC'S 1-6 & 10 S024763

3
DP344914

LAND DISTRICT: OTAGO

DP24148
2
DP24148



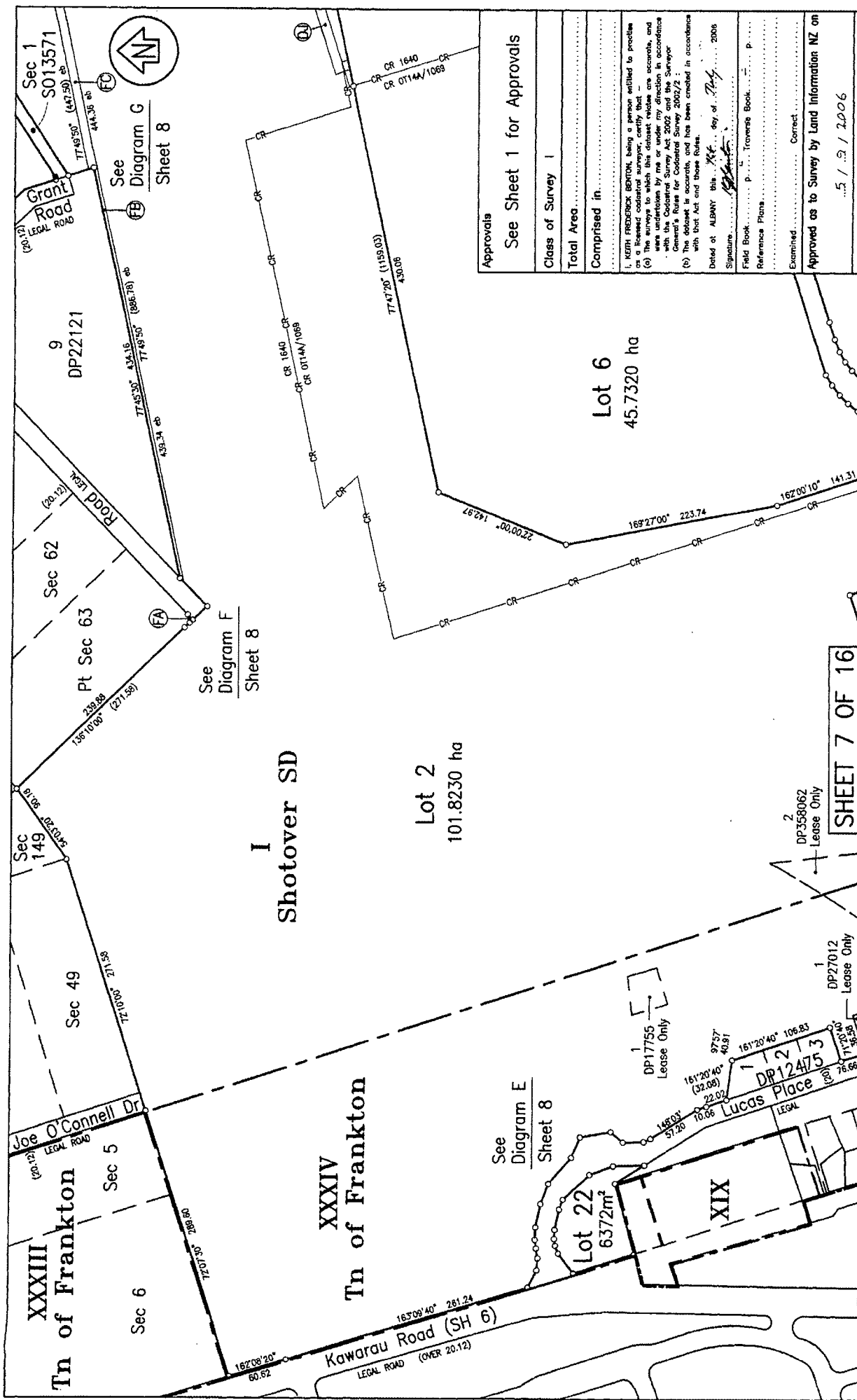
SHEET 4 OF 16

TERRITORIAL AUTHORITY: QUEENSTOWN LAKES DIST.
 Surveyed by: Apex Surveying Ltd (1999)
 Scale: 1:2500 Date: JULY, 2005

LOTS 1-8, 10-15, 18-28 & 30-33 inc. BEING A SUBMISSION OF PT. SEC. 166 BLK 1 SHOTOVER SD. LOT 4 DP12475, LOT 1 DP12550, LOT 1 DP17314, LOTS 1 & 2 DP17755, PT. LOT 1 & LOTS 3-5 DP22121, LOTS 1 & 2 DP22194, PT. LOTS 1-3 DP25245, PT. LOT 1 DP25634, PT. LOT 4 DP25644, LOT 2 DP27577, LOTS 1, 5 & 6 DP27578, LOTS 1 & 4 DP27775, LOTS 4-8 DP300177, LOTS 1 & 2 DP337572 & SEC'S 1-6 & 10 S024763

LAND DISTRICT: OIAGO

Approvals	See Sheet 1 for Approvals
Class of Survey	1
Total Area	
Comprised in	
I, WETH FREDERICK BENTON, being a person entitled to practise as a licensed cadastral surveyor, certify that - (a) The surveys to which this dataset relates are accurate, and were undertaken by me or under my direction in accordance with the Cadastral Survey Act 2002 and the Surveyor General's Instructions for Cadastral Survey 2002/2; (b) The dataset is a true and correct copy of the original with that Act and these Rules. Dated at ALBANY this 14th day of July, 2006 Signature: <i>[Signature]</i> Field Book: P Traverse Book P Reference Plans: Correct Examined: Correct Approved as to Survey by Land Information NZ on 15/9/2006 Deposited by Land Information NZ on 3/11/2006 File # NZLIS/DP304345-1 Received 4-7-06 (instructions) DP304345	



LAND DISTRICT..... OTAGO..... Tn of Frankton XXXIV Shotover SD Lot 2 101.8230 ha Lot 6 45.7320 ha Lot 22 6372m ² Lot XIX	See Diagram E Sheet 8 See Diagram F Sheet 8 See Diagram G Sheet 8 See Diagram H Sheet 8	DP17755 Lease Only DP27012 Lease Only DP358062 Lease Only DP12475 DP27757 DP27758 DP27759 DP27760 DP27761 DP27762 DP27763 DP27764 DP27765 DP27766 DP27767 DP27768 DP27769 DP27770 DP27771 DP27772 DP27773 DP27774 DP27775 DP27776 DP27777 DP27778 DP27779 DP27780 DP27781 DP27782 DP27783 DP27784 DP27785 DP27786 DP27787 DP27788 DP27789 DP27790 DP27791 DP27792 DP27793 DP27794 DP27795 DP27796 DP27797 DP27798 DP27799 DP27800	SHEET 7 OF 16 BEING A SUBDIVISION OF PT. SEC. 166 BLK 1 SHOTOVER SD, LOT 1 DP12550, LOT 1 DP17314, LOTS 1 & 2 DP17755, PT. LOT 1 & LOTS 3-5 DP22121, LOTS 1 & 2 DP22194, PT. LOTS 1-3 DP25245, PT. LOT 1 & 4 DP25644, LOT 2 DP27577, LOTS 1, 5 & 6 DP27578, LOTS 1 & 4 DP27775, LOTS 4-8 DP300177, LOTS 1 & 2 DP337572 & SEC'S 1-6 & 10 SD24763	TERRITORIAL AUTHORITY QUEENSTOWN LAKES DIST. Surveyed by APEX Surveying Ltd. (1009) Scale 1:2500 Date JULY 2005	Approved as to Survey by Land Information NZ on 5 / 9 / 2006 Deposited by Land Information NZ on 3 / 11 / 2006 File C:\www\Plan\434345.1 Received 4-7-06 Instructions DP304345
--	--	--	--	--	--

Approvals
 See Sheet 1 for Approvals
 Class of Survey 1
 Total Area
 Comprised in
 I, KERR FREDERICK BENTON, being a person entitled to practice as a licensed cadastral surveyor, certify that -
 (a) The surveys to which this dataset relate are accurate, and were made by me or under my direction in accordance with the Otago Survey Act 2002/2
 General's Rules for Cadastral Survey 2002/2
 (b) The dataset is accurate, and has been created in accordance with that Act and those Rules.
 Dated at ALBANY this 24th day of July 2006
 Signature: *[Signature]*
 Field Book: p. Traverse Book. P.
 Reference Plans
 Examined: Correct
 Approved as to Survey by Land Information NZ on
 5 / 9 / 2006
 Deposited by Land Information NZ on
 3 / 11 / 2006
 File C:\www\Plan\434345.1
 Received 4-7-06
 Instructions
DP304345

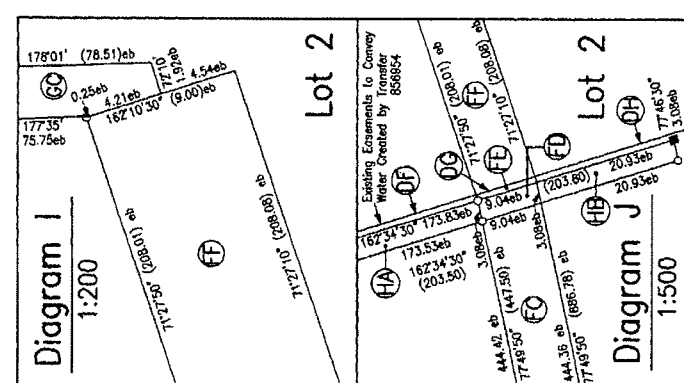
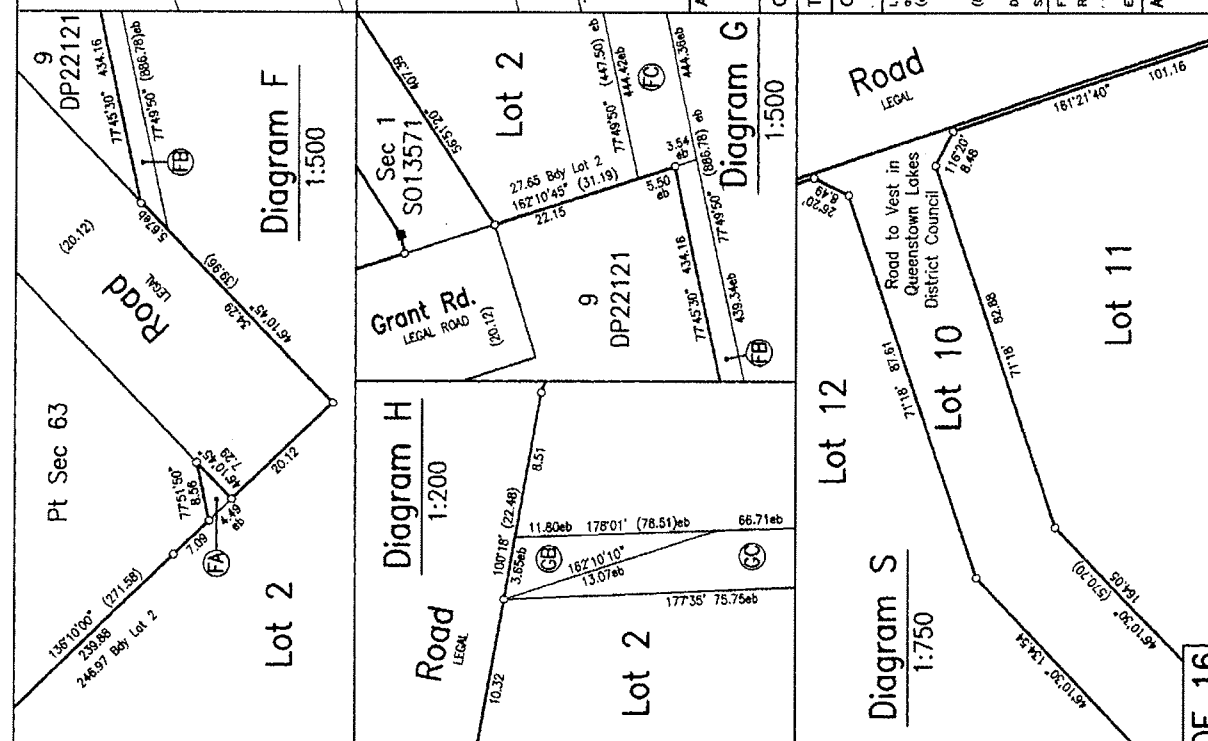
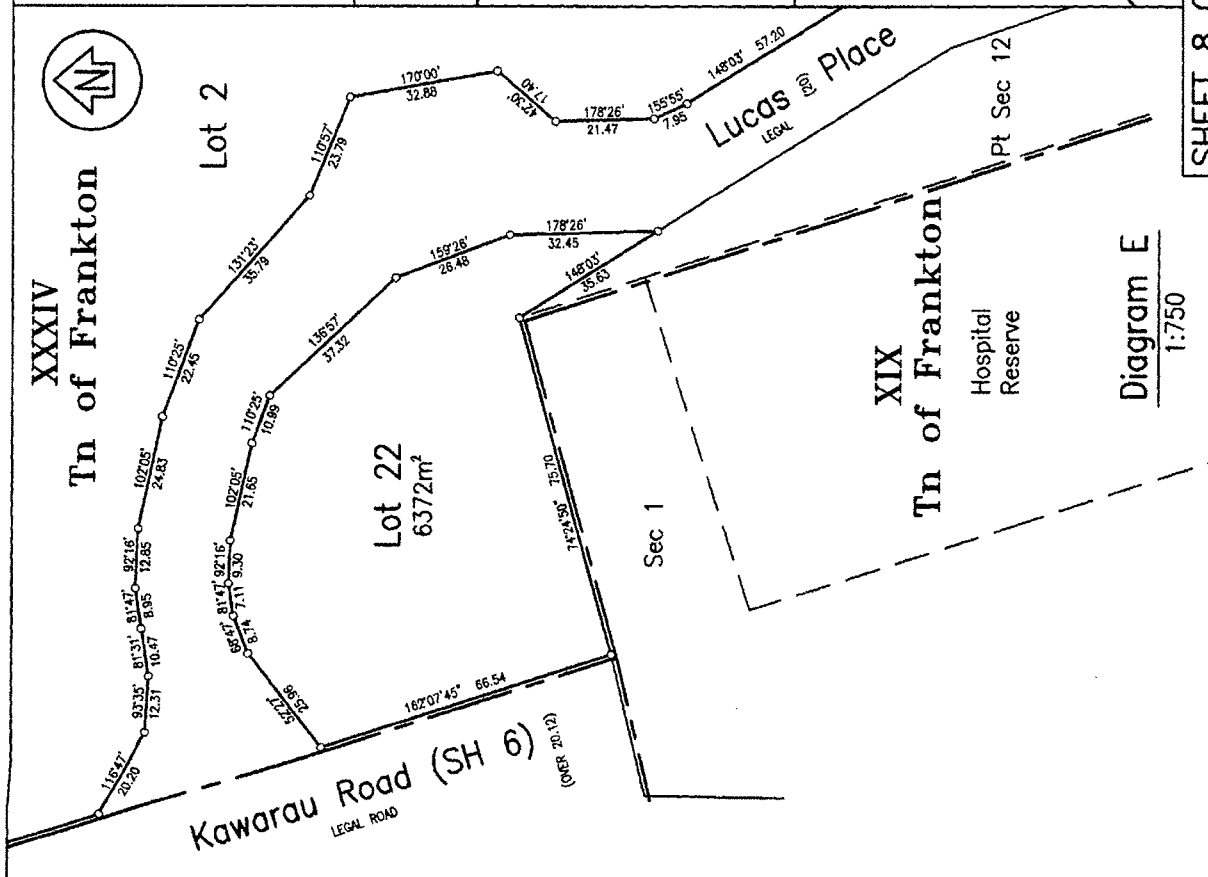
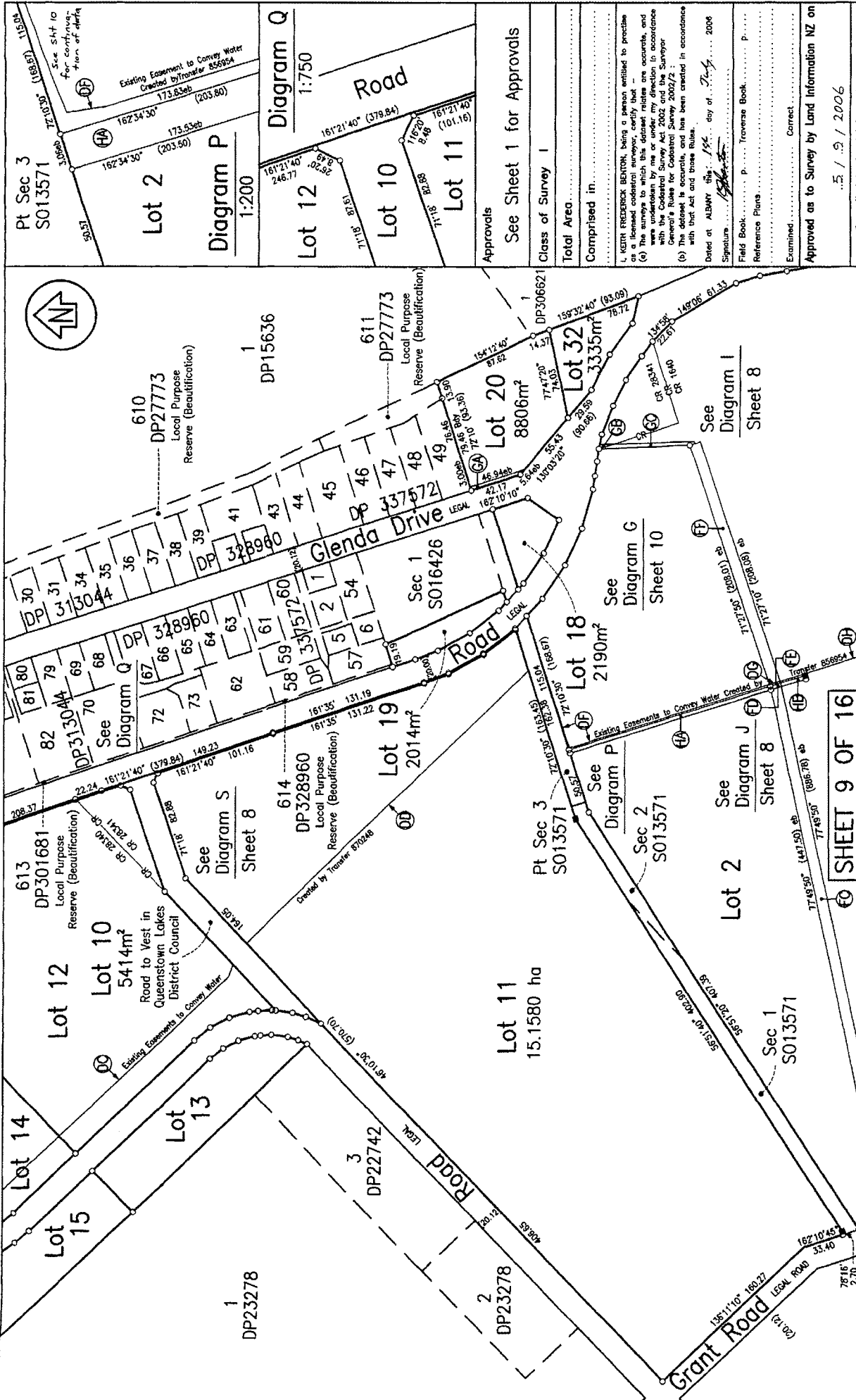


Diagram I
 1:200
 Diagram J
 1:500
 Approvals
 See Sheet 1 for Approvals
 Class of Survey I
 Total Area.....
 Comprised in.....
 I, KEITH FREDERICK BENTON, being a person entitled to practice as a licensed cadastral surveyor, certify that the accounts and plans were undertaken by me or under my direction in accordance with the Cadastral Survey Act 2002 and the Surveyor General's Rules for Cadastral Survey, 2002/2.
 (b) The document is accurate, and has been created in accordance with that Act and those Rules.
 Dated at ALBANY this 14th day of July 2006
 Signature: *[Signature]*
 Field Book:
 Reference Plans:
 Examined:
 Approved as to Survey by Land Information NZ on 15/07/2006
 Deposited by Land Information NZ on 13/07/2006
 File Number: DP304345
 Received 4-1-06
 Instructions

SHEET 8 OF 16

TERRITORIAL AUTHORITY: QUEENSTOWN LAKES DIST.
 Surveyed by: **Apex Surveying Ltd** (1009)
 Scale: AS SHOWN. Date: JULY 2005.

LAND DISTRICT.....OTAGO.....
 LOTS 1-8, 10-15, 18-28 & 30-33 inc. BEING A SUBDIVISION OF PT. SEC. 166 BLK 1 SHOTOVER SD, LOT 4 DP12475, LOT 1 DP12350, LOT 1 DP17314, LOTS 1 & 2, DP17795, PT. LOT 1 & LOTS 3-5 DP22121, LOTS 1 & 2 DP22194, PT. LOTS 1-3 DP25245, PT. LOT 1 DP25634, PT. LOT 4 DP25644, LOT 2 DP27577, LOTS 1, 5 & 6 DP27578, LOTS 1 & 4 DP27775, LOTS 4-8 DP300177, LOTS 1 & 2 DP337572 & SEC'S 1-6 & 10 S024763



LAND DISTRICT.....OTAGO

LOTS 1-8, 10-15, 18-28 & 30-33 inc. BEING A SUBDIVISION OF PT. SEC. 166 BLK 1 SHOTOVER SD. LOT 4 DP12475, LOT 1 DP12550, LOT 1 DP17314, LOTS 1 & 2 DP17755, PT. LOT 1 & LOTS 3-5 DP22121, LOTS 1 & 2 DP22194, PT. LOTS 1-3 DP25245, PT. LOT 1 DP25634, PT. LOT 4 DP25644, LOT 2 DP27577, LOTS 1, 5 & 6 DP27578, LOTS 1 & 4 DP27775, LOTS 4-8 DP300177, LOTS 1 & 2 DP337572 & SEC'S 1-6 & 10 S024763

Scale: 1:2000 Date: JULY, 2006

TERRITORIAL AUTHORITY: QUEENSTOWN LAKES DIST.
 Surveyed by: **Apex Surveying Ltd (1999)**

Approved as to Survey by Land Information NZ on
 ..5 / 9 / 2006

Deposited by Land Information NZ on
 ... / ... / 2006

File NUMBER: DP304345-1
 Received 4-7-06
 Instructions

DP304345

1. KATH FRASER BENTON, being a person entitled to practice as a licensed cadastral surveyor, certifies that the contents and accuracy of this plan were undertaken by me or under my direction in accordance with the Cadastral Survey Act 2002 and the Surveyor General's Rules for Cadastral Survey 2002/2.

2. The detail is accurate, and has been created in accordance with that Act and these Rules.

Dated at ALBANY this 12th day of July, 2006

Signature: *[Signature]*

Field Book: P. Traverse Book: P.

Reference Plans: Correct

Examined: Correct

Approved as to Survey by Land Information NZ on
 ..5 / 9 / 2006

Class of Survey 1

Total Area

Comprised in

See Sheet 1 for Approvals

See Diagram P

See Diagram Q

See Diagram R

See Diagram S

See Diagram T

See Diagram U

See Diagram V

See Diagram W

See Diagram X

See Diagram Y

See Diagram Z

See Diagram AA

See Diagram AB

See Diagram AC

See Diagram AD

See Diagram AE

See Diagram AF

See Diagram AG

See Diagram AH

See Diagram AI

See Diagram AJ

See Diagram AK

See Diagram AL

See Diagram AM

See Diagram AN

See Diagram AO

See Diagram AP

See Diagram AQ

See Diagram AR

See Diagram AS

See Diagram AT

See Diagram AU

See Diagram AV

See Diagram AW

See Diagram AX

See Diagram AY

See Diagram AZ

See Diagram BA

See Diagram BB

See Diagram BC

See Diagram BD

See Diagram BE

See Diagram BF

See Diagram BG

See Diagram BH

See Diagram BI

See Diagram BJ

See Diagram BK

See Diagram BL

See Diagram BM

See Diagram BN

See Diagram BO

See Diagram BP

See Diagram BQ

See Diagram BR

See Diagram BS

See Diagram BT

See Diagram BU

See Diagram BV

See Diagram BW

See Diagram BX

See Diagram BY

See Diagram BZ

See Diagram CA

See Diagram CB

See Diagram CC

See Diagram CD

See Diagram CE

See Diagram CF

See Diagram CG

See Diagram CH

See Diagram CI

See Diagram CJ

See Diagram CK

See Diagram CL

See Diagram CM

See Diagram CN

See Diagram CO

See Diagram CP

See Diagram CQ

See Diagram CR

See Diagram CS

See Diagram CT

See Diagram CU

See Diagram CV

See Diagram CW

See Diagram CX

See Diagram CY

See Diagram CZ

See Diagram DA

See Diagram DB

See Diagram DC

See Diagram DD

See Diagram DE

See Diagram DF

See Diagram DG

See Diagram DH

See Diagram DI

See Diagram DJ

See Diagram DK

See Diagram DL

See Diagram DM

See Diagram DN

See Diagram DO

See Diagram DP

See Diagram DQ

See Diagram DR

See Diagram DS

See Diagram DT

See Diagram DU

See Diagram DV

See Diagram DW

See Diagram DX

See Diagram DY

See Diagram DZ

See Diagram EA

See Diagram EB

See Diagram EC

See Diagram ED

See Diagram EE

See Diagram EF

See Diagram EG

See Diagram EH

See Diagram EI

See Diagram EJ

See Diagram EK

See Diagram EL

See Diagram EM

See Diagram EN

See Diagram EO

See Diagram EP

See Diagram EQ

See Diagram ER

See Diagram ES

See Diagram ET

See Diagram EU

See Diagram EV

See Diagram EW

See Diagram EX

See Diagram EY

See Diagram EZ

See Diagram FA

See Diagram FB

See Diagram FC

See Diagram FD

See Diagram FE

See Diagram FF

See Diagram FG

See Diagram FH

See Diagram FI

See Diagram FJ

See Diagram FK

See Diagram FL

See Diagram FM

See Diagram FN

See Diagram FO

See Diagram FP

See Diagram FQ

See Diagram FR

See Diagram FS

See Diagram FT

See Diagram FU

See Diagram FV

See Diagram FW

See Diagram FX

See Diagram FY

See Diagram FZ

See Diagram GA

See Diagram GB

See Diagram GC

See Diagram GD

See Diagram GE

See Diagram GF

See Diagram GG

See Diagram GH

See Diagram GI

See Diagram GJ

See Diagram GK

See Diagram GL

See Diagram GM

See Diagram GN

See Diagram GO

See Diagram GP

See Diagram GQ

See Diagram GR

See Diagram GS

See Diagram GT

See Diagram GU

See Diagram GV

See Diagram GW

See Diagram GX

See Diagram GY

See Diagram GZ

See Diagram HA

See Diagram HB

See Diagram HC

See Diagram HD

See Diagram HE

See Diagram HF

See Diagram HG

See Diagram HH

See Diagram HI

See Diagram HJ

See Diagram HK

See Diagram HL

See Diagram HM

See Diagram HN

See Diagram HO

See Diagram HP

See Diagram HQ

See Diagram HR

See Diagram HS

See Diagram HT

See Diagram HU

See Diagram HV

See Diagram HW

See Diagram HX

See Diagram HY

See Diagram HZ

See Diagram IA

See Diagram IB

See Diagram IC

See Diagram ID

See Diagram IE

See Diagram IF

See Diagram IG

See Diagram IH

See Diagram II

See Diagram IJ

See Diagram IK

See Diagram IL

See Diagram IM

See Diagram IN

See Diagram IO

See Diagram IP

See Diagram IQ

See Diagram IR

See Diagram IS

See Diagram IT

See Diagram IU

See Diagram IV

See Diagram IW

See Diagram IX

See Diagram IY

See Diagram IZ

See Diagram JA

See Diagram JB

See Diagram JC

See Diagram JD

See Diagram JE

See Diagram JF

See Diagram JG

See Diagram JH

See Diagram JI

See Diagram JJ

See Diagram JK

See Diagram JL

See Diagram JM

See Diagram JN

See Diagram JO

See Diagram JP

See Diagram JQ

See Diagram JR

See Diagram JS

See Diagram JT

See Diagram JU

See Diagram JV

See Diagram JW

See Diagram JX

See Diagram JY

See Diagram JZ

See Diagram KA

See Diagram KB

See Diagram KC

See Diagram KD

See Diagram KE

See Diagram KF

See Diagram KG

See Diagram KH

See Diagram KI

See Diagram KJ

See Diagram KK

See Diagram KL

See Diagram KM

See Diagram KN

See Diagram KO

See Diagram KP

See Diagram KQ

See Diagram KR

See Diagram KS

See Diagram KT

See Diagram KU

See Diagram KV

See Diagram KW

See Diagram KX

See Diagram KY

See Diagram KZ

See Diagram LA

See Diagram LB

See Diagram LC

See Diagram LD

See Diagram LE

See Diagram LF

See Diagram LG

See Diagram LH

See Diagram LI

See Diagram LJ

See Diagram LK

See Diagram LL

See Diagram LM

See Diagram LN

See Diagram LO

See Diagram LP

See Diagram LQ

See Diagram LR

See Diagram LS

See Diagram LT

See Diagram LU

See Diagram LV

See Diagram LW

See Diagram LX

See Diagram LY

See Diagram LZ

See Diagram MA

See Diagram MB

See Diagram MC

See Diagram MD

See Diagram ME

See Diagram MF

See Diagram MG

See Diagram MH

See Diagram MI

See Diagram MJ

See Diagram MK

See Diagram ML

See Diagram MM

See Diagram MN

See Diagram MO

See Diagram MP

See Diagram MQ

See Diagram MR

See Diagram MS

See Diagram MT

See Diagram MU

See Diagram MV

See Diagram MW

See Diagram MX

See Diagram MY

See Diagram MZ

See Diagram NA

See Diagram NB

See Diagram NC

See Diagram ND

See Diagram NE

See Diagram NF

See Diagram NG

See Diagram NH

See Diagram NI

See Diagram NJ

See Diagram NK

See Diagram NL

See Diagram NM

See Diagram NN

See Diagram NO

See Diagram NP

See Diagram NQ

See Diagram NR

See Diagram NS

See Diagram NT

See Diagram NU

See Diagram NV

See Diagram NW

See Diagram NX

See Diagram NY

See Diagram NZ

See Diagram OA

See Diagram OB

See Diagram OC

See Diagram OD

See Diagram OE

See Diagram OF

See Diagram OG

See Diagram OH

See Diagram OI

See Diagram OJ

See Diagram OK

See Diagram OL

See Diagram OM

See Diagram ON

See Diagram OO

See Diagram OP

See Diagram OQ

See Diagram OR

See Diagram OS

See Diagram OT

See Diagram OU

See Diagram OV

See Diagram OW

See Diagram OX

See Diagram OY

See Diagram OZ

See Diagram PA

See Diagram PB

See Diagram PC

See Diagram PD

See Diagram PE

See Diagram PF

See Diagram PG

See Diagram PH

See Diagram PI

See Diagram PJ

See Diagram PK

See Diagram PL

See Diagram PM

See Diagram PN

See Diagram PO

See Diagram PP

See Diagram PQ

See Diagram PR

See Diagram PS

See Diagram PT

See Diagram PU

See Diagram PV

See Diagram PW

See Diagram PX

See Diagram PY

See Diagram PZ

See Diagram QA

See Diagram QB

See Diagram QC

See Diagram QD

See Diagram QE

See Diagram QF

See Diagram QG

See Diagram QH

See Diagram QI

See Diagram QJ

See Diagram QK

See Diagram QL

See Diagram QM

See Diagram QN

See Diagram QO

See Diagram QP

See Diagram QQ

See Diagram QR

See Diagram QS

See Diagram QT

See Diagram QU

See Diagram QV

See Diagram QW

See Diagram QX

See Diagram QY

See Diagram QZ

See Diagram RA

See Diagram RB

See Diagram RC

See Diagram RD

See Diagram RE

See Diagram RF

See Diagram RG

See Diagram RH

See Diagram RI

See Diagram RJ

See Diagram RK

See Diagram RL

See Diagram RM

See Diagram RN

See Diagram RO

See Diagram RP

See Diagram RQ

See Diagram RR

See Diagram RS

See Diagram RT

See Diagram RU

See Diagram RV

See Diagram RW

See Diagram RX

See Diagram RY

See Diagram RZ

See Diagram SA

See Diagram SB

See Diagram SC

See Diagram SD

See Diagram SE

See Diagram SF

See Diagram SG

See Diagram SH

See Diagram SI

See Diagram SJ

See Diagram SK

See Diagram SL

See Diagram SM

See Diagram SN

See Diagram SO

See Diagram SP

See Diagram SQ

See Diagram SR

See Diagram SS

See Diagram ST

See Diagram SU

See Diagram SV

See Diagram SW

See Diagram SX

See Diagram SY

See Diagram SZ

See Diagram TA

See Diagram TB

See Diagram TC

See Diagram TD

See Diagram TE

See Diagram TF

See Diagram TG

See Diagram TH

See Diagram TI

See Diagram TJ

See Diagram TK

See Diagram TL

See Diagram TM

See Diagram TN

See Diagram TO

See Diagram TP

See Diagram TQ

See Diagram TR

See Diagram TS

See Diagram TT

See Diagram TU

See Diagram TV

See Diagram TW

See Diagram TX

See Diagram TY

See Diagram TZ

See Diagram UA

See Diagram UB

See Diagram UC

See Diagram UD

See Diagram UE

See Diagram UF

See Diagram UG

See Diagram UH

See Diagram UI

See Diagram UJ

See Diagram UK

See Diagram UL

See Diagram UM

See Diagram UN

See Diagram UO

See Diagram UP

See Diagram UQ

See Diagram UR

See Diagram US

See Diagram UT

See Diagram UY

See Diagram UZ

See Diagram VA

See Diagram VB

See Diagram VC

See Diagram VD

See Diagram VE

See Diagram VF

See Diagram VG

See Diagram VH

See Diagram VI

See Diagram VJ

See Diagram VK

See Diagram VL

See Diagram VM

See Diagram VN

See Diagram VO

See Diagram VP

See Diagram VQ

See Diagram VR

See Diagram VS

See Diagram VT

See Diagram VU

See Diagram VV

See Diagram VW

See Diagram VX

See Diagram VY

See Diagram VZ

See Diagram WA

See Diagram WB

See Diagram WC

See Diagram WD

See Diagram WE

See Diagram WF

See Diagram WG

See Diagram WH

See Diagram WI

See Diagram WJ

See Diagram WK

See Diagram WL

See Diagram WM

See Diagram WN

See Diagram WO

See Diagram WP

See Diagram WQ

See Diagram WR

See Diagram WS

See Diagram WT

See Diagram WU

See Diagram WV

See Diagram WW

See Diagram WX

See Diagram WY

See Diagram WZ

See Diagram XA

See Diagram XB

See Diagram XC

See Diagram XD

See Diagram XE

See Diagram XF

See Diagram XG

See Diagram XH

See Diagram XI

See Diagram XJ

See Diagram XK

See Diagram XL

See Diagram XM

See Diagram XN

See Diagram XO

See Diagram XP

See Diagram XQ

See Diagram XR

See Diagram XS

See Diagram XT

See Diagram XU

See Diagram XV

See Diagram XW

See Diagram XX

See Diagram XY

See Diagram XZ

See Diagram YA

See Diagram YB

See Diagram YC

See Diagram YD

See Diagram YE

See Diagram YF

See Diagram YG

See Diagram YH

See Diagram YI

See Diagram YJ

See Diagram YK

See Diagram YL

See Diagram YM

See Diagram YN

See Diagram YO

See Diagram YP

See Diagram YQ

See Diagram YR

See Diagram YS

See Diagram YT

See Diagram YU

See Diagram YV

See Diagram YW

See Diagram YX

See Diagram YY

See Diagram YZ

See Diagram ZA

See Diagram ZB

See Diagram ZC

See Diagram ZD

See Diagram ZE

See Diagram ZF

See Diagram ZG

See Diagram ZH

See Diagram ZI

See Diagram ZJ

See Diagram ZK

See Diagram ZL

See Diagram ZM

See Diagram ZN

See Diagram ZO

See Diagram ZP

See Diagram ZQ

See Diagram ZR

See Diagram ZS

See Diagram ZT

See Diagram ZU

See Diagram ZV

See Diagram ZW

See Diagram ZX

See Diagram ZY

See Diagram ZZ

Approvals

See Sheet 1 for Approvals

Class of Survey 1

Total Area

Comprised in

I, KETH FREDERICK BENTON, being a person entitled to practise as a licensed cadastral surveyor, certify that -
(a) The surveys to which this dataset relates are accurate, and were conducted in accordance with the provisions of the Survey Act 2002, and the General's Rules for Cadastral Survey 2002/2;
(b) The dataset is accurate, and has been created in accordance with that Act and those Rules.

Dated at ALEXANDRIA this 11th day of July, 2006

Signature: [Signature]

Field Book: P Traverse Book

Reference Plans: P

Examined: Correct

Approved as to Survey by Land Information NZ on

5 / 9 / 2006

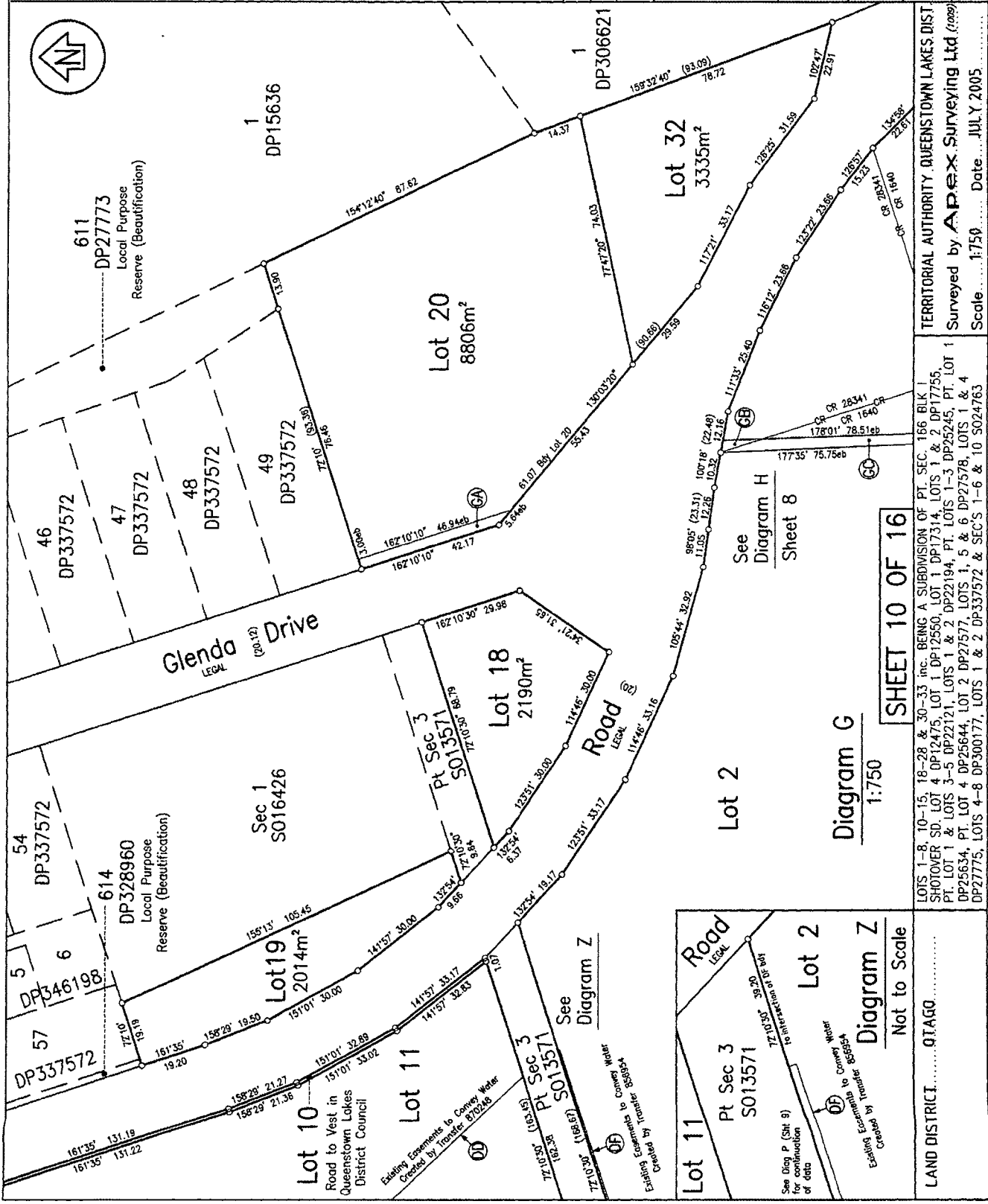
Deposited by Land Information NZ on

3 / 11 / 2006

Received 28-8-06

DP304345

File C:\work\man\DP304345\1
Instructions



SHEET 10 OF 16

Diagram G
1:750

Lot 2

See Diagram H
Sheet 8

Lot 11

Pt Sec 3
S013571

Lot 2

Diagram Z
Not to Scale

LAND DISTRICT.....OTAGO

LOTS 1-8, 10-15, 18-28 & 30-33 inc. BEING A SUBDIVISION OF PT. SEC. 166 BLK 1 SHOTOVER SD. LOT 4 DP12475, LOT 1 DP12550, LOT 1 DP17314, LOTS 1 & 2 DP17755, PT. LOT 1 & LOTS 3-5 DP22121, LOTS 1 & 2 DP22194, PT. LOTS 1-3 DP25245, PT. LOT 1 DP25634, PT. LOT 4 DP25644, LOT 2 DP27577, LOTS 1, 5 & 6 DP27578, LOTS 1 & 4 DP27775, LOTS 4-8 DP300177, LOTS 1 & 2 DP337372 & SEC'S 1-6 & 10 S024763

TERRITORIAL AUTHORITY QUEENSTOWN LAKES DIST
Surveyed by APEX Surveying Ltd (1009)
Scale 1:750 Date JULY 2005

Approvals

See Sheet 1 for Approvals

AREAS MARKED (A) - (LM) INC. ARE SUBJECT TO LAND COVENANTS

Class of Survey 1

Total Area

Comprised in

I, KEITH FREDERICK BENTON, being a person entitled to practice as a licensed cadastral surveyor, certify that - (a) the boundaries and areas shown on this plan are true and correct, and were undertaken by me or under my direction in accordance with the Cadastral Survey Act 2002 and the Surveyor-General's Rules for Cadastral Survey 2002/2; (b) The database is accurate, and has been created in accordance with that Act and those Rules.

Dated at ALBANY this 15th day of July 2006

Signature: [Signature]

Field Book: [Blank]

Reference Plans: [Blank]

Examined: [Blank]

Approved as to Survey by Land Information NZ on

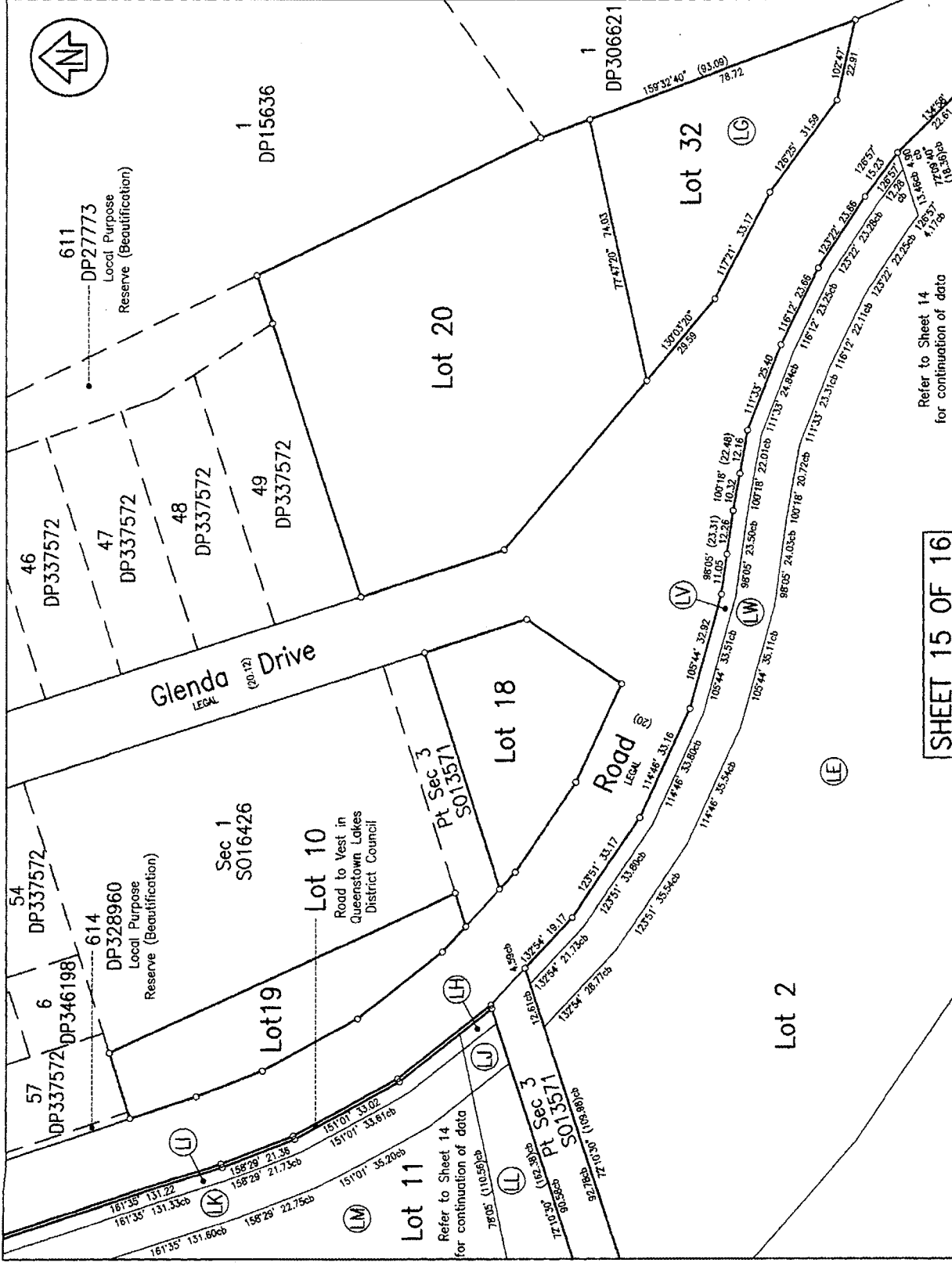
5 / 9 / 2006

Deposited by Land Information NZ on

3 / 11 / 2006

DP304345

File Number: [Blank]
Received Instructions: 4.1.06



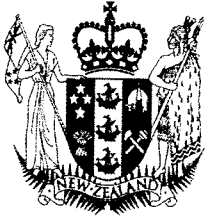
SHEET 15 OF 16

Refer to Sheet 14 for continuation of data

LOTS 1-8, 10-15, 18-28 & 30-33 inc. BEING A SUBDIVISION OF PT. SEC. 166 BLK. 1 SHOTOVER SD. LOT 4 DP12475, LOT 1 DP12550, LOT 1 DP17314, LOTS 1 & 2 DP17755, PT. LOT 1 & LOTS 3-5 DP22121, LOTS 1 & 2 DP22194, PT. LOTS 1-3 DP25245, PT. LOT 1 DP25634, PT. LOT 4 DP25644, LOT 2 DP27577, LOTS 1, 5 & 6 DP27578, LOTS 1 & 4 DP27775, LOTS 4-8 DP30017, LOTS 1 & 2 DP337572 & SEC'S 1-6 & 10 S024763

LAND DISTRICT: OIAGO

TERRITORIAL AUTHORITY: QUEENSTOWN LAKES DIST.
Surveyed by: APEX Surveying Ltd (1009)
Scale: 1:750 Date: JULY 2005



COMPUTER FREEHOLD REGISTER UNDER LAND TRANSFER ACT 1952



Search Copy

R.W. Muir
Registrar-General
of Land

Identifier 347189
Land Registration District Otago
Date Issued 09 August 2007

Prior References

111573 17559

Estate Fee Simple
Area 41.7064 hectares more or less
Legal Description Lot 8 Deposited Plan 386734 and Lot 7,
24-25 Deposited Plan 304345

Proprietors

Remarkables Park Limited

Interests

Subject to Section 8 Coal Mines Amendment Act 1950 (affects that part of Lot 7 DP 304345 formerly Section 161 Block I Shotover SD)

5726093.2 Consent Notice pursuant to Section 221 Resource Management Act 1991 - 11.9.2003 at 9:00 am (affects part Lot 8 DP 386734 formerly in CT 23235)

Subject to a right (in gross) to drain stormwater over part Lot 8 DP 386734 marked T on DP 386734 in favour of Queenstown Lakes District Council created by Transfer 5726093.9 - 11.9.2003 at 9:00 am

The easement created by Transfer 5726093.9 is subject to Section 243 (a) Resource Management Act 1991 7098676.2 Consent Notice pursuant to Section 221 Resource Management Act 1991 - 3.11.2006 at 9:00 am (affects Lots 7, 24 and 25 DP 304345)

Subject to Section 241(2) Resource Management Act 1991 (affects DP 304345)

Subject to a right of way, to convey electric power, telecommunications, computer media, gas, water and to drain sewage and water over part Lot 7 DP 304345 marked K on DP 304345 created by Easement Instrument 7098676.27 - 3.11.2006 at 9:00 am

The easements created by Easement Instrument 7098676.27 are subject to Section 243 (a) Resource Management Act 1991

Subject to a right of way, to convey electric power, telecommunications, computer media, gas and water and to drain sewage and water over part Lot 25 DP 304345 marked L on DP 304345 created by Easement Instrument 7098676.29 - 3.11.2006 at 9:00 am

The easements created by Easement Instrument 7098676.29 are subject to Section 243 (a) Resource Management Act 1991

Appurtenant to Lot 8 DP 386734 are rights of way and rights to convey electric power, telecommunications, computer media, water and gas created by Easement Instrument 7147036.4 - 6.12.2006 at 9:00 am

Some of the easements created by Easement Instrument 7147036.4 are subject to Section 243 (a) Resource Management Act 1991

7496562.6 Consent Notice pursuant to Section 221 Resource Management Act 1991 - 9.8.2007 at 9:00 am

Subject to Section 241(2) and Sections 242(1) and (2) Resource Management Act 1991 (affects DP 386734)

Subject to a right (in gross) to drain stormwater over part Lot 8 DP 386734 marked GU, GV, GW, GX, GY and a right to drain sewage over part Lot 8 DP 386734 marked GW all on DP 386734 in favour of Queenstown Lakes District Council created by Easement Instrument 7496562.8 - 9.8.2007 at 9:00 am

The easements created by Easement Instrument 7496562.8 are subject to Section 243 (a) Resource Management Act 1991

Subject to a right of way over part Lot 8 DP 386734 marked F and a right to drain sewage and stormwater over

Identifier**347189**

part Lot 8 DP 386734 marked HG, HH all on DP 386734 created by Easement Instrument 7496562.9 - 9.8.2007 at 9:00 am

Appurtenant to Lot 8 DP 386734 is a right of way, pedestrian access and landscaping, a bus stop and a right to convey water created by Easement Instrument 7496562.9 - 9.8.2007 at 9:00 am

The easements created by Easement Instrument 7496562.9 are subject to Section 243 (a) Resource Management Act 1991

7496562.16 Mortgage to ASB Bank Limited - 9.8.2007 at 9:00 am

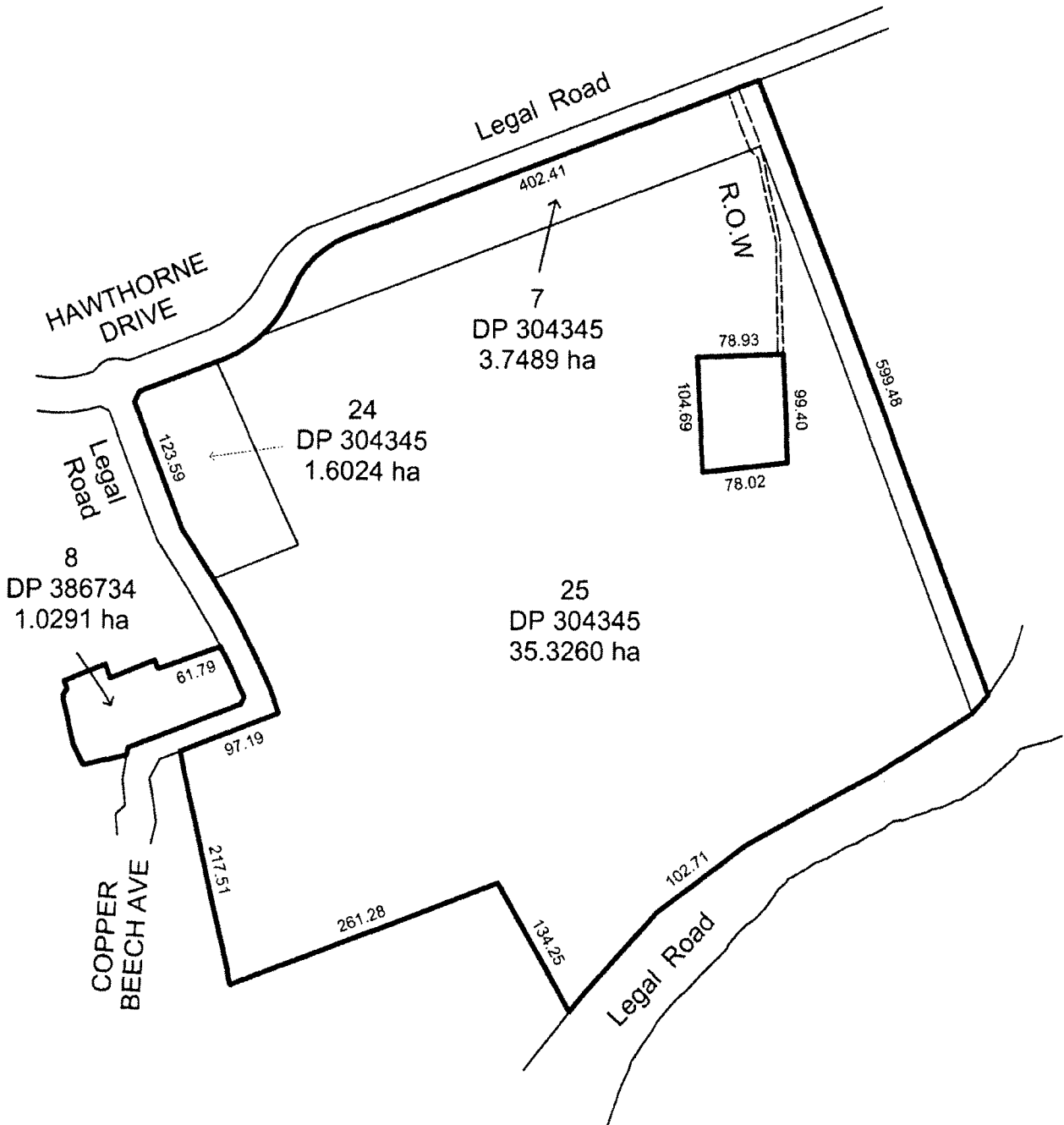
Land Covenant in Transfer 7596490.2 - 31.10.2007 at 9:00 am

Title Diagram 347189

Cpy - 01/01, Pgs - 001, 07/09/07, 08:28



DocID: 312970626



Total area: 41.7064 ha

For further dimensions see DP 304345 & DP 386734



COMPUTER FREEHOLD REGISTER UNDER LAND TRANSFER ACT 1952



Search Copy


R. W. Muir
Registrar-General
of Land

Identifier OT17A/956
Land Registration District Otago
Date Issued 15 March 1996

Prior References

OT238/188

Estate Fee Simple
Area 8000 square metres more or less
Legal Description Lot 6 Deposited Plan 25112

Proprietors

Remarkables Park Limited

Interests

Subject to Section 243 (c) Resource Management Act 1991 (see DP 25112)

Land Covenant in Transfer 5243252.2 - 10.6.2002 at 9:00 am
Land Covenant in Transfer 5267177.2 - 27.6.2002 at 9:05 am
Land Covenant in Transfer 5311811.2 - 13.8.2002 at 9:00 am
Land Covenant in Transfer 5338942.2 - 9.9.2002 at 9:03 am
Land Covenant in Transfer 5396905.2 - 8.11.2002 at 9:00 am
Land Covenant in Transfer 5607450.1 - 3.6.2003 at 9:00 am
Land Covenant in Transfer 5659934.1 - 17.7.2003 at 9:00 am
Land Covenant in Transfer 5659076.2 - Produced 16.7.2003 at 9:00 am and Entered 17.7.2003 at 9:00 am
Land Covenant in Transfer 5668227.2 - 24.7.2003 at 9:00 am
Land Covenant in Transfer 5712125.2 - 1.9.2003 at 9:00 am
Land Covenant in Transfer 5714450.1 - 3.9.2003 at 9:00 am
Land Covenant in Transfer 5897786.1 - 13.2.2004 at 9:00 am
Land Covenant in Transfer 5946813.4 - 26.3.2004 at 9:00 am
Land Covenant in Transfer 5948208.5 - 29.3.2004 at 9:00 am
Land Covenant in Transfer 5948276.3 - 29.3.2004 at 9:00 am
Land Covenant in Transfer 5948276.6 - 29.3.2004 at 9:00 am
Land Covenant in Transfer 5948825.3 - 29.3.2004 at 9:00 am
Land Covenant in Transfer 5949716.5 - 30.3.2004 at 9:00 am
Land Covenant in Transfer 5983985.3 - 29.4.2004 at 9:00 am
Land Covenant in Transfer 6080741.6 - 16.7.2004 at 9:00 am
Land Covenant in Transfer 6136112.3 - 3.9.2004 at 9:00 am
Land Covenant in Transfer 6172077.2 - 6.10.2004 at 9:00 am
Land Covenant in Transfer 6177352.4 - 11.10.2004 at 9:00 am
Land Covenant in Transfer 6205437.1 - 5.11.2004 at 9:00 am
Land Covenant in Transfer 6208427.1 - 9.11.2004 at 9:00 am
6478510.3 Mortgage to ASB Bank Limited - 30.6.2005 at 9:00 am
Appurtenant hereto is a right of way, to convey electric power, telecommunications, computer media, gas and water and to drain sewage and water created by Easement Instrument 7098676.27 - 3.11.2006 at 9:00 am
The easements created by Easement Instrument 7098676.27 are subject to Section 243 (a) Resource Management Act 1991

Identifier**OT17A/956**

Appurtenant hereto is a right of way, to convey electric power, telecommunications, computer media, gas and water and to drain sewage and water created by Easement Instrument 7098676.29 - 3.11.2006 at 9:00 am

The easements created by Easement Instrument 7098676.29 are subject to Section 243 (a) Resource Management Act 1991

Land Covenant in Easement Instrument 7098676.34 - 3.11.2006 at 9:00 am

Land Covenant in Easement Instrument 7098676.36 - 3.11.2006 at 9:00 am

Land Covenant in Easement Instrument 7098676.38 - 3.11.2006 at 9:00 am

Land Covenant in Transfer 7596490.2 - 31.10.2007 at 9:00 am

8154806.1 Variation of Covenant 6080741.6 - 14.7.2009 at 9:07 am

Land Covenant in Transfer 8496990.1 - 24.5.2010 at 11:01 am

Land Covenant in Transfer 8515147.1 - 22.6.2010 at 9:13 am

Land Covenant in Transfer 8503191.2 - 21.7.2010 at 10:31 am

Land Covenant in Transfer 8503191.3 - 21.7.2010 at 10:31 am

Land Covenant in Transfer 8584650.2 - 6.9.2010 at 3:24 pm

Land Covenant in Transfer 8599440.2 - 12.10.2010 at 8:53 am

Land Covenant in Transfer 8661829.2 - 16.12.2010 at 4:47 pm



**COMPUTER FREEHOLD REGISTER
UNDER LAND TRANSFER ACT 1952**



Search Copy


R. W. Muir
Registrar-General
of Land

Identifier OT17C/1175
Land Registration District Otago
Date Issued 25 October 1996

Prior References

OT17A/819 OT238/188

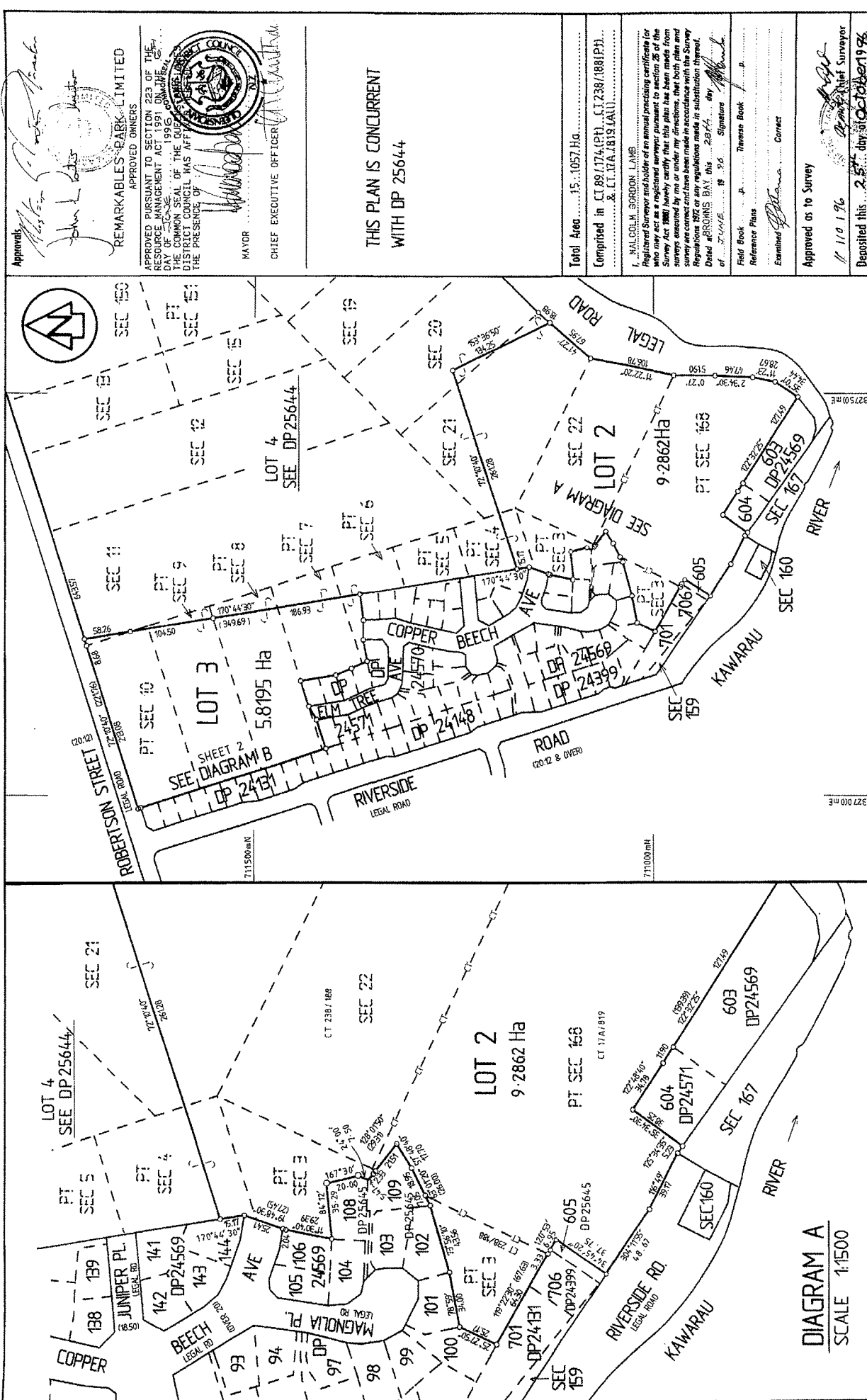
Estate Fee Simple
Area 9.2862 hectares more or less
Legal Description Lot 2 Deposited Plan 25643

Proprietors

Remarkables Park Limited

Interests

6478510.3 Mortgage to ASB Bank Limited - 30.6.2005 at 9:00 am
Land Covenant in Easement Instrument 7507832.1 - 17.8.2007 at 9:00 am
Land Covenant in Transfer 7596490.2 - 31.10.2007 at 9:00 am
8139939.1 CAVEAT BY QUEENSTOWN LAKES DISTRICT COUNCIL - 22.4.2009 at 11:35 am



LAND DISTRICT... OTAGO
 SURVEY BLK. & DIST. I. SHOTOVER
 NZMS 261 SHI... E.41... RECORD MAP No 05:16:12:4
 TERRITORIAL AUTHORITY QUEENSTOWN-LAKES... DIST.
 Surveyed by LAMB AND ASSOCIATES 3857/PRESHT
 Scale 1:3000 Date APRIL 1996
 LOTS 2 & 3 BEING A SUBDIVISION OF PT. SEC'S
 3, 4, 5, 6, 7, 8, 9, 10 & SEC'S 11, 20, 21 & 22.

Approvals
 [Signatures]
 REMARKABLES PARK LIMITED
 APPROVED OWNERS

APPROVED PURSUANT TO SECTION 223 OF THE
 RESOURCE MANAGEMENT ACT 1991
 DAY OF...
 THE COMMON SEAL OF THE COUNCIL OF THE
 DISTRICT COUNCIL WAS AFFIXED IN THE
 PRESENCE OF
 [Signature] MAYOR
 [Signature] CHIEF EXECUTIVE OFFICER

THIS PLAN IS CONCURRENT
 WITH DP 25644

Total Area... 15,105.7 Ha.
 Comprised in CT 89/174 (PT), CT 238/198 (P.D.)...
 & CT 374/181 (LAU)
 I. MALCOLM SORDON, LAMB
 Registered Surveyor and holder of an annual practicing certificate for
 who may act as a registered surveyor pursuant to section 26 of the
 Survey Act 1981 hereby certify that this plan has been made from
 surveys conducted by him or under his supervision in accordance with the
 Regulations 1972 or any regulations made in substitution thereof.
 Dated... 28/4/96
 Signature...
 Field Book...
 Reference Plans...
 Examined...
 Approved as to Survey
 11/01/96
 Deposited this... 25th day of October 1996
 District Land Registrar
 DP 25643
 1/1/1996

1:11750 mN

1:11500mN

1:26750mN

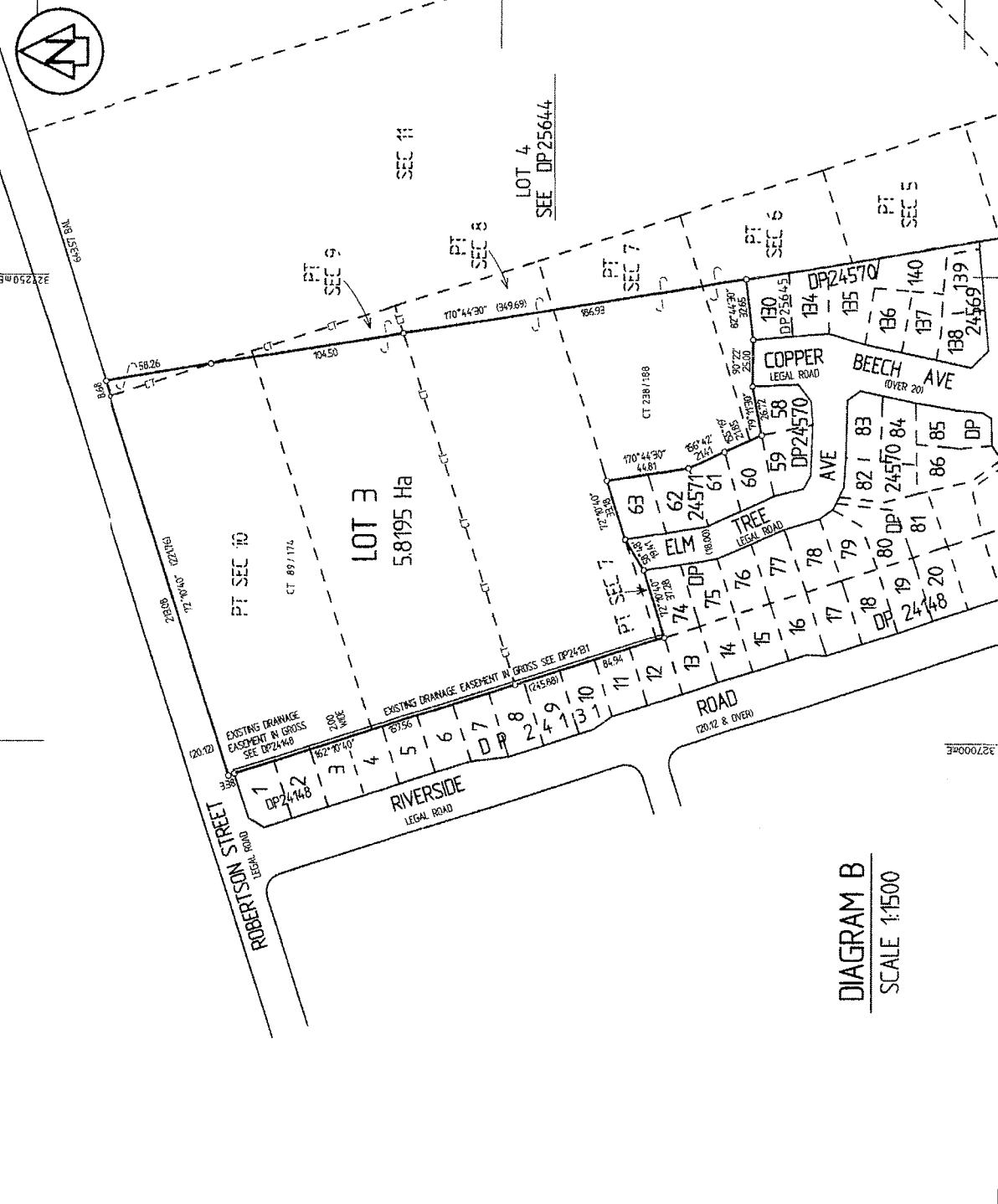


DIAGRAM B
SCALE 1:1500

LAND DISTRICT OTAGO
SURVEY BLK. & DIST. I. SHOTOVER
NZMS 261 SHT E41 RECORD MAP No 05-16/2-4

LOTS 2 & 3 BEING A SUBDIVISION OF PT. SEC'S
3, 4, 5, 6, 7, 8, 9, 10 & 168 & SEC'S 11, 20, 21 & 22.

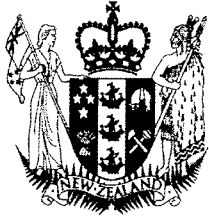
TERRITORIAL AUTHORITY QUEENSTOWN-LAKES, DIST.
Surveyed by LAMB AND ASSOCIATES 3857 (RES) LT
Scale 1:1500 Date APRIL 1996

Approvals
John L. Lamb
District Land Registrar

REFER TO SHEET 1 FOR APPROVALS

THIS PLAN IS CONCURRENT
WITH DP25644

Total Area	
Comprised in	
I. MALCOLM GIBBON, LAMB, Registered Surveyor and holder of an annual practicing certificate for the year ending 31st December 1996, certifies that the plan has been made from surveys executed by me or under my directions, that both plan and survey are correct and have been made in accordance with the Survey Regulations 1972 or any regulations made in substitution thereof. Dated at DUNEDIN, this 28th day of JUNE 1996. Signatures	
Field Book	Traverse Book
Reference Plans	Correct
Examined	Correct
Approved as to Survey	
Deposited this 25th day of OCTOBER 1996	
Received	District Land Registrar
Instructed	DP 25643



**COMPUTER FREEHOLD REGISTER
UNDER LAND TRANSFER ACT 1952**



R. W. Muir
Registrar-General
of Land

Search Copy

Identifier OT17C/1182
Land Registration District Otago
Date Issued 26 August 1997

Prior References

OT16C/412 OT238/188

Estate Fee Simple
Area 1024 square metres more or less
Legal Description Lot 108 Deposited Plan 25645
Proprietors
Chee Huat Ng and Bee Leng Lian

Interests

935361.10 Easement Certificate specifying the following easements - 26.8.1997 at 9.01 am

Type	Servient Tenement	Easement Area	Dominant Tenement	Statutory Restriction
Transmit electricity	Lot 108 Deposited Plan 25645 - herein	C DP 25645	Lot 109 Deposited Plan 25645 - CT OT17C/1183	
Telephone communications	Lot 108 Deposited Plan 25645 - herein	C DP 25645	Lot 109 Deposited Plan 25645 - CT OT17C/1183	
Convey gas	Lot 109 Deposited Plan 25645 - CT OT17C/1183	D DP 25645	Lot 108 Deposited Plan 25645 - herein	
Convey water	Lot 109 Deposited Plan 25645 - CT OT17C/1183	D DP 25645	Lot 108 Deposited Plan 25645 - herein	
Transmit electricity	Lot 109 Deposited Plan 25645 - CT OT17C/1183	B DP 25645	Lot 108 Deposited Plan 25645 - herein	
Right of way	Lot 109 Deposited Plan 25645 - CT OT17C/1183	B DP 25645	Lot 108 Deposited Plan 25645 - herein	Section 243 (a) Resource Management Act 1991
Right of way	Lot 109 Deposited Plan 25645 - CT OT17C/1183	D DP 25645	Lot 108 Deposited Plan 25645 - herein	Section 243 (a) Resource Management Act 1991
Telephone communications	Lot 109 Deposited Plan 25645 - CT OT17C/1183	B DP 25645	Lot 108 Deposited Plan 25645 - herein	
Transmit electricity	Lot 108 Deposited Plan 25645 - herein	A DP 25645	Lot 109 Deposited Plan 25645 - CT OT17C/1183	
Telephone communications	Lot 108 Deposited Plan 25645 - herein	A DP 25645	Lot 109 Deposited Plan 25645 - CT OT17C/1183	
Right of way	Lot 108 Deposited Plan 25645 - herein	A DP 25645	Lot 109 Deposited Plan 25645 - CT OT17C/1183	Section 243 (a) Resource Management Act 1991

Identifier **OT17C/1182**

Right of way Lot 108 Deposited Plan C DP 25645 Lot 109 Deposited Plan Section 243 (a) Resource
25645 - herein 25645 - CT Management Act 1991
OT17C/1183

935361.11 Transfer creating the following easements in gross - 26.8.1997 at 9.01 am

Type	Servient Tenement	Easement Area	Grantee	Statutory Restriction
Drain sewage	Lot 108 Deposited Plan 25645 - herein	F DP 25645	Queenstown Lakes District Council	Section 243 (a) Resource Management Act 1991
Drain water	Lot 108 Deposited Plan 25645 - herein	F DP 25645	Queenstown Lakes District Council	Section 243 (a) Resource Management Act 1991
Drain sewage	Lot 108 Deposited Plan 25645 - herein	C DP 25645	Queenstown Lakes District Council	Section 243 (a) Resource Management Act 1991
Drain water	Lot 108 Deposited Plan 25645 - herein	C DP 25645	Queenstown Lakes District Council	Section 243 (a) Resource Management Act 1991

Land Covenant contained in Deed 937045.2

945474.4 Encumbrance to Remarkables Park Limited - 27.3.1998 at 11.02 am

Approvals
John L. Dink
Mark J. Dink

REMARKABLES PARK LIMITED
 APPROVED OWNERS
 APPROVED PURSUANT TO SECTION 223 OF THE
 RESOURCE MANAGEMENT ACT 1991 ON THE
 DAY OF 20-08-1996 SUBJECT TO THE
 GRANTING OR RESERVING OF THE EASEMENTS
 SET OUT IN THE MEMORANDUM HEREON THE
 COMMON SEAL OF THE QUEENSTOWN-LAKES
 DISTRICT COUNCIL WAS AFFIXED HERETO IN
 THE PRESENCE OF

MAYOR
 CHIEF EXECUTIVE OFFICER

MEMORANDUM OF EASEMENTS IN GROSS		SHOWN	GRANTEE
PURPOSE	SERVIENT TENEMENT	SHOWN	GRANTEE
DRAIN TO SENEGERAGE	LOT 130	(G)	QUEENSTOWN LAKES DISTRICT COUNCIL
RIGHT TO DRAIN SEWERAGE	LOT 108	(F)	
RIGHT TO DRAIN WATER	LOT 102	(J)	
RIGHT TO DRAIN WATER	LOT 108	(C)	
RIGHT TO DRAIN WATER	LOT 109	(D)	
RIGHT TO DRAIN WATER	LOT 103	(E)	

MEMORANDUM OF EASEMENTS		SHOWN	DOMINANT TENEMENT
PURPOSE	SERVIENT TENEMENT	SHOWN	DOMINANT TENEMENT
RIGHT OF WAY	LOT 108	(A)	LOT 109
	LOT 109	(B)	LOT 108

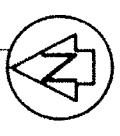
Total Area 5086 m²
 Comprised in CT 238/188 (PT), CT 174/89, PT, A, B, C, D, E, F, G, H, I, J, K, L, M, N, O, P, Q, R, S, T, U, V, W, X, Y, Z, AA, AB, AC, AD, AE, AF, AG, AH, AI, AJ, AK, AL, AM, AN, AO, AP, AQ, AR, AS, AT, AU, AV, AW, AX, AY, AZ, BA, BB, BC, BD, BE, BF, BG, BH, BI, BJ, BK, BL, BM, BN, BO, BP, BQ, BR, BS, BT, BU, BV, BW, BX, BY, BZ, CA, CB, CC, CD, CE, CF, CG, CH, CI, CJ, CK, CL, CM, CN, CO, CP, CQ, CR, CS, CT, CU, CV, CW, CX, CY, CZ, DA, DB, DC, DD, DE, DF, DG, DH, DI, DJ, DK, DL, DM, DN, DO, DP, DQ, DR, DS, DT, DU, DV, DW, DX, DY, DZ, EA, EB, EC, ED, EE, EF, EG, EH, EI, EJ, EK, EL, EM, EN, EO, EP, EQ, ER, ES, ET, EU, EV, EW, EX, EY, EZ, FA, FB, FC, FD, FE, FF, FG, FH, FI, FJ, FK, FL, FM, FN, FO, FP, FQ, FR, FS, FT, FU, FV, FW, FX, FY, FZ, GA, GB, GC, GD, GE, GF, GG, GH, GI, GJ, GK, GL, GM, GN, GO, GP, GQ, GR, GS, GT, GU, GV, GW, GX, GY, GZ, HA, HB, HC, HD, HE, HF, HG, HH, HI, HJ, HK, HL, HM, HN, HO, HP, HQ, HR, HS, HT, HU, HV, HW, HX, HY, HZ, IA, IB, IC, ID, IE, IF, IG, IH, II, IJ, IK, IL, IM, IN, IO, IP, IQ, IR, IS, IT, IU, IV, IW, IX, IY, IZ, JA, JB, JC, JD, JE, JF, JG, JH, JI, JJ, JK, JL, JM, JN, JO, JP, JQ, JR, JS, JT, JU, JV, JW, JX, JY, JZ, KA, KB, KC, KD, KE, KF, KG, KH, KI, KJ, KK, KL, KM, KN, KO, KP, KQ, KR, KS, KT, KU, KV, KW, KX, KY, KZ, LA, LB, LC, LD, LE, LF, LG, LH, LI, LJ, LK, LL, LM, LN, LO, LP, LQ, LR, LS, LT, LU, LV, LW, LX, LY, LZ, MA, MB, MC, MD, ME, MF, MG, MH, MI, MJ, MK, ML, MM, MN, MO, MP, MQ, MR, MS, MT, MU, MV, MW, MX, MY, MZ, NA, NB, NC, ND, NE, NF, NG, NH, NI, NJ, NK, NL, NM, NN, NO, NP, NQ, NR, NS, NT, NU, NV, NW, NX, NY, NZ, OA, OB, OC, OD, OE, OF, OG, OH, OI, OJ, OK, OL, OM, ON, OO, OP, OQ, OR, OS, OT, OU, OV, OW, OX, OY, OZ, PA, PB, PC, PD, PE, PF, PG, PH, PI, PJ, PK, PL, PM, PN, PO, PP, PQ, PR, PS, PT, PU, PV, PW, PX, PY, PZ, QA, QB, QC, QD, QE, QF, QG, QH, QI, QJ, QK, QL, QM, QN, QO, QP, QQ, QR, QS, QT, QU, QV, QW, QX, QY, QZ, RA, RB, RC, RD, RE, RF, RG, RH, RI, RJ, RK, RL, RM, RN, RO, RP, RQ, RR, RS, RT, RU, RV, RW, RX, RY, RZ, SA, SB, SC, SD, SE, SF, SG, SH, SI, SJ, SK, SL, SM, SN, SO, SP, SQ, SR, SS, ST, SU, SV, SW, SX, SY, SZ, TA, TB, TC, TD, TE, TF, TG, TH, TI, TJ, TK, TL, TM, TN, TO, TP, TQ, TR, TS, TT, TU, TV, TW, TX, TY, TZ, UA, UB, UC, UD, UE, UF, UG, UH, UI, UJ, UK, UL, UM, UN, UO, UP, UQ, UR, US, UT, UY, UZ, VA, VB, VC, VD, VE, VF, VG, VH, VI, VJ, VK, VL, VM, VN, VO, VP, VQ, VR, VS, VT, VU, VV, VW, VX, VY, VZ, WA, WB, WC, WD, WE, WF, WG, WH, WI, WJ, WK, WL, WM, WN, WO, WP, WQ, WR, WS, WT, WU, WV, WW, WX, WY, WZ, XA, XB, XC, XD, XE, XF, XG, XH, XI, XJ, XK, XL, XM, XN, XO, XP, XQ, XR, XS, XT, XU, XV, XW, XX, XY, XZ, YA, YB, YC, YD, YE, YF, YG, YH, YI, YJ, YK, YL, YM, YN, YO, YP, YQ, YR, YS, YT, YU, YV, YW, YX, YY, YZ, ZA, ZB, ZC, ZD, ZE, ZF, ZG, ZH, ZI, ZJ, ZK, ZL, ZM, ZN, ZO, ZP, ZQ, ZR, ZS, ZT, ZU, ZV, ZW, ZX, ZY, ZZ

L. MALCOLM GORDON LAMB
 Registered Surveyor and holder of an annual practicing certificate for who may act as a registered surveyor pursuant to section 26 of the Survey Act 1980 hereby certify that this plan has been made from surveys executed by me or under my directions, that both plan and survey are correct and have been made in accordance with the Survey Regulations 1982 or any regulations made in substitution thereof. Dated at BROOKS, BAY OF BAYS, 28th day of JUNE 1996 Signature: *[Signature]*

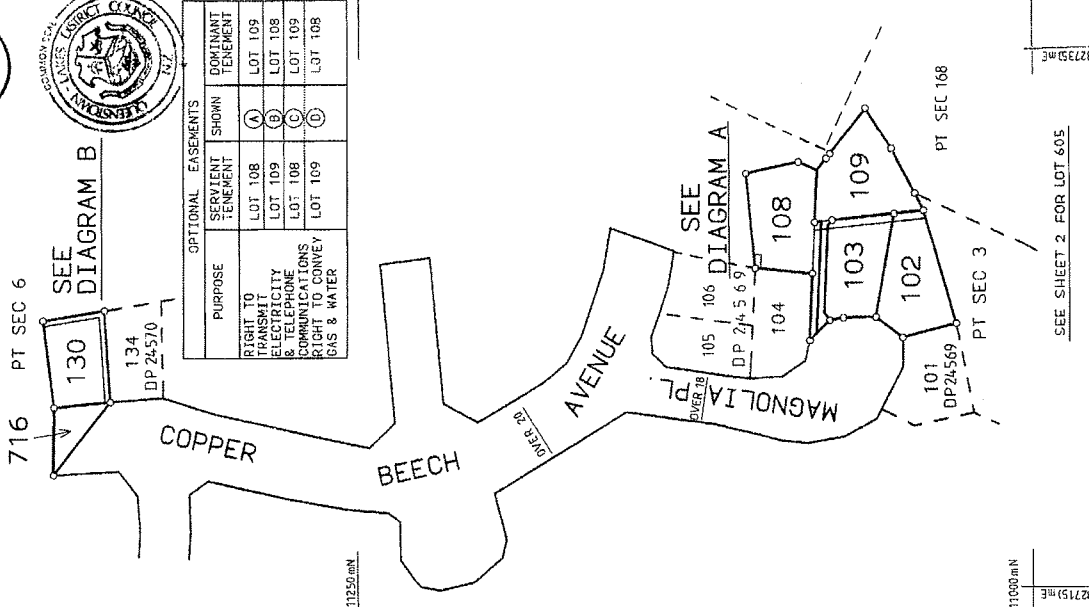
Field Book p. Reverse Book p.
 Reference Plans
 Examined *[Signature]* Correct

Approved as to Survey
 19.1.96
 Deposited this 26th day of August 1996

Chat Surveyor
 District Land Registrar
 DP 25645
 Received 1/7/96
 Instructions

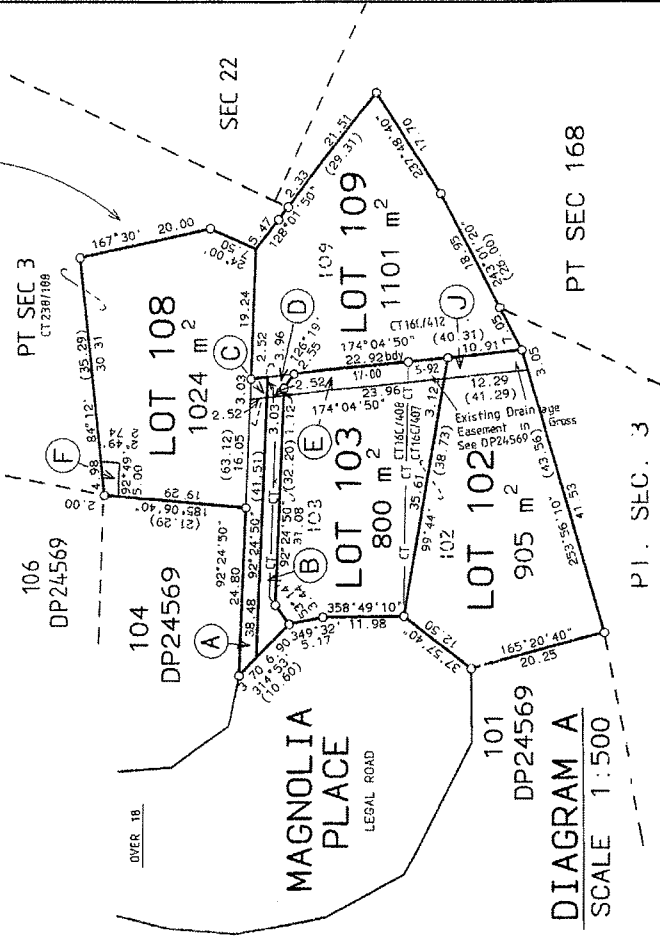
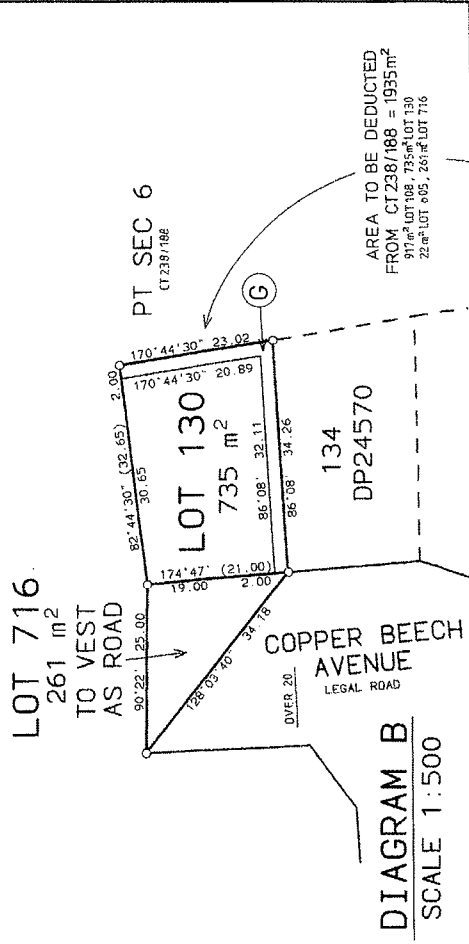


OPTIONAL EASEMENTS		SHOWN	DOMINANT TENEMENT
PURPOSE	SERVIENT TENEMENT	SHOWN	DOMINANT TENEMENT
RIGHT TO TRANSMIT ELECTRICITY & TELEPHONE CABLES	LOT 108	(A)	LOT 109
RIGHT TO CONVEY GAS & WATER	LOT 109	(B)	LOT 108
	LOT 108	(C)	LOT 109
	LOT 109	(D)	LOT 108



SEE SHEET 2 FOR LOT 605
 TERRITORIAL AUTHORITY QUEENSTOWN-LAKES DISTRICT
 Surveyed by LAMB AND ASSOCIATES 3857 R.H.
 Scale 1:1250 Date APRIL 1996

SHEET 1 OF 2



LOTS 102, 103, 108, 109, 130, 605 & 716 BEING A SUBDIVISION OF LOTS 102, 103 & 109 & PT SEC'S 3, 6 & 168

LAND DISTRICT COTAGO
 SURVEY BLK. & DIST. J. SHOTOVER
 NZMS 261 SHIT E.4.1 RECORD MAP No. 05.16

W.A. ROBERTSON, SURVEYOR GENERAL, DEPARTMENT OF SURVEY AND LAND INFORMATION, NEW ZEALAND
 C/VE APPROVED LMB:BS



COMPUTER FREEHOLD REGISTER UNDER LAND TRANSFER ACT 1952



R. W. Muir
Registrar-General
of Land

Search Copy

Identifier **OT17C/1183**
Land Registration District **Otago**
Date Issued 26 August 1997

Prior References

OT16C/408 OT16C/412

Estate Fee Simple
Area 1101 square metres more or less
Legal Description Lot 109 Deposited Plan 25645

Proprietors

Chee Huat Ng and Bee Leng Lian

Interests

889592.2 Consent Notice pursuant to Section 221 (1) Resource Management Act 1991 by Queenstown Lakes District Council - 23.8.1995 at 9.12 am (affects part formerly CT OT16C/408)

Land Covenant in Deed 891073.4 - 13.9.1995 at 9.33 am (affects part formerly CT OT16C/408)

935361.10 Easement Certificate specifying the following easements - 26.8.1997 at 9.01 am

Type	Servient Tenement	Easement Area	Dominant Tenement	Statutory Restriction
Right of way	Lot 108 Deposited Plan 25645 - CT OT17C/1182	A DP 25645	Lot 109 Deposited Plan 25645 - herein	Section 243 (a) Resource Management Act 1991
Right of way	Lot 108 Deposited Plan 25645 - CT OT17C/1182	C DP 25645	Lot 109 Deposited Plan 25645 - herein	Section 243 (a) Resource Management Act 1991
Right of way	Lot 109 Deposited Plan 25645 - herein	B DP 25645	Lot 108 Deposited Plan 25645 - CT OT17C/1182	Section 243 (a) Resource Management Act 1991
Right of way	Lot 109 Deposited Plan 25645 - herein	D DP 25645	Lot 108 Deposited Plan 25645 - CT OT17C/1182	Section 243 (a) Resource Management Act 1991
Transmit electricity	Lot 108 Deposited Plan 25645 - CT OT17C/1182	A DP 25645	Lot 109 Deposited Plan 25645 - herein	Section 243 (a) Resource Management Act 1991
Telephone communications	Lot 108 Deposited Plan 25645 - CT OT17C/1182	A DP 25645	Lot 109 Deposited Plan 25645 - herein	Section 243 (a) Resource Management Act 1991
Transmit electricity	Lot 109 Deposited Plan 25645 - herein	B DP 25645	Lot 108 Deposited Plan 25645 - CT OT17C/1182	Section 243 (a) Resource Management Act 1991
Telephone communications	Lot 109 Deposited Plan 25645 - herein	B DP 25645	Lot 108 Deposited Plan 25645 - CT OT17C/1182	Section 243 (a) Resource Management Act 1991
Transmit electricity	Lot 108 Deposited Plan 25645 - CT OT17C/1182	C DP 25645	Lot 109 Deposited Plan 25645 - herein	Section 243 (a) Resource Management Act 1991

Identifier **OT17C/1183**

Telephone communications	Lot 108 Deposited Plan C DP 25645 25645 - CT OT17C/1182	Lot 109 Deposited Plan 25645 - herein	Section 243 (a) Resource Management Act 1991
Convey gas	Lot 109 Deposited Plan D DP 25645 25645 - herein	Lot 108 Deposited Plan 25645 - CT OT17C/1182	Section 243 (a) Resource Management Act 1991
Convey water	Lot 109 Deposited Plan D DP 25645 25645 - herein	Lot 108 Deposited Plan 25645 - CT OT17C/1182	Section 243 (a) Resource Management Act 1991

935361.11 Transfer creating the following easements in gross - 26.8.1997 at 9.01 am

Type	Servient Tenement	Easement Area	Grantee	Statutory Restriction
Drain water	Lot 109 Deposited Plan 25645 - herein	D DP 25645	Queenstown Lakes District Council	Section 243 (a) Resource Management Act 1991

Land Covenant in Deed 937045.2 - 25.9.1997 at 9.00 am

937045.3 Encumbrance to Remarkables Park Limited - 25.9.1997 at 9.00 am

Approvals
John Latta Director
Mark ...

REMARKABLES PARK LIMITED
 APPROVED OWNERS
 APPROVED PURSUANT TO SECTION 223 OF THE RESOURCE MANAGEMENT ACT 1991 ON THE DAY OF 28.06.1995 SUBJECT TO THE GRANTING OR RESERVING OF THE EASEMENTS SET OUT IN THE MEMORANDUM HEREON THE COMMON SEAL OF THE QUEENSTOWN-LAKES DISTRICT COUNCIL WAS AFFIXED HERETO IN THE PRESENCE OF
 MAYOR
 CHIEF EXECUTIVE OFFICER

MEMORANDUM OF EASEMENTS IN CROSS

PURPOSE	SERVIENT TENEMENT	SHOWN	GRANTEE
RIGHT TO DRAIN WATER	LOT 130	(G)	QUEENSTOWN DISTRICT COUNCIL
SEWERAGE	LOT 108	(F)	
RIGHT TO DRAIN WATER	LOT 102	(J)	
RIGHT TO DRAIN WATER	LOT 108	(C)	
RIGHT TO DRAIN WATER	LOT 109	(D)	
RIGHT TO DRAIN WATER	LOT 103	(E)	

MEMORANDUM OF EASEMENTS

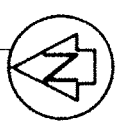
PURPOSE	SERVIENT TENEMENT	SHOWN	DOMINANT TENEMENT
RIGHT OF WAY	LOT 108	(A)	LOT 109
	LOT 109	(B)	LOT 108
	LOT 109	(D)	LOT 108

Total Area 5086 m²
 Comprised in CT 238/188 (PT), CT 174/819, PT, CT 162/407 (ALL), 162/408 (ALL), 162/412 (ALL)

1. MARGALUM GORDON LAMB
 I hereby certify that this plan has been made from surveys enclosed by me or under my directions. That both plan and surveys are correct and have been made in accordance with the Survey Regulations 1927 or any regulations made in substitution thereof.
 Dated at BROWNS BAY this 28th day of JUNE 1995
 Signature
 Field Book p. Inverse Book p.
 Reference Plans
 Examined Correct

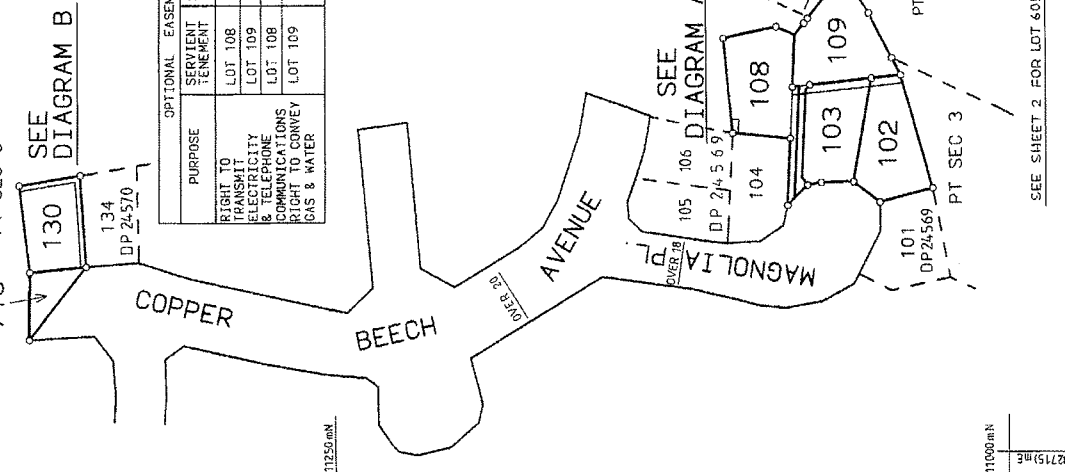
Approved as to Survey
 Deposited this 26th day of AUGUST 1995
 Chief Surveyor

Received 1/7/95
 DP 25645
 Instructions



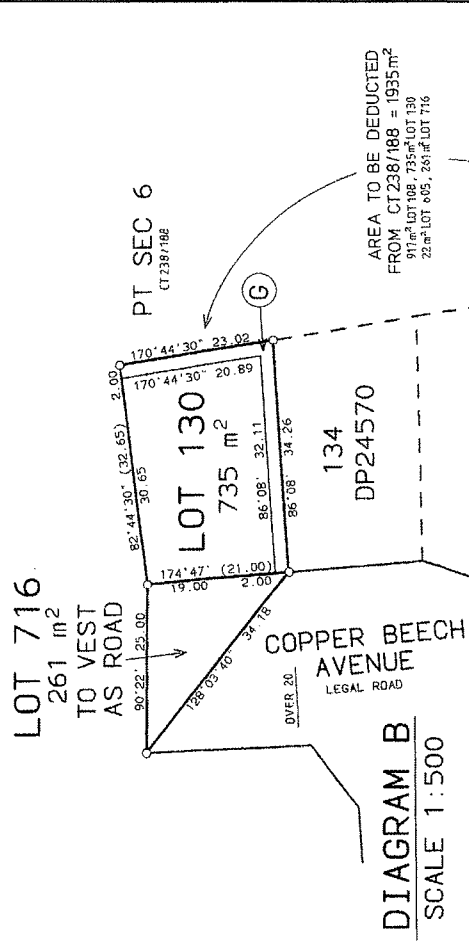
OPTIONAL EASEMENTS

PURPOSE	SERVIENT TENEMENT	SHOWN	DOMINANT TENEMENT
RIGHT TO TRANSMIT & TELEPHONE CABLES TO CONVEY GAS & WATER	LOT 108	(A)	LOT 109
	LOT 108	(B)	LOT 109
	LOT 109	(C)	LOT 108
	LOT 109	(D)	LOT 108

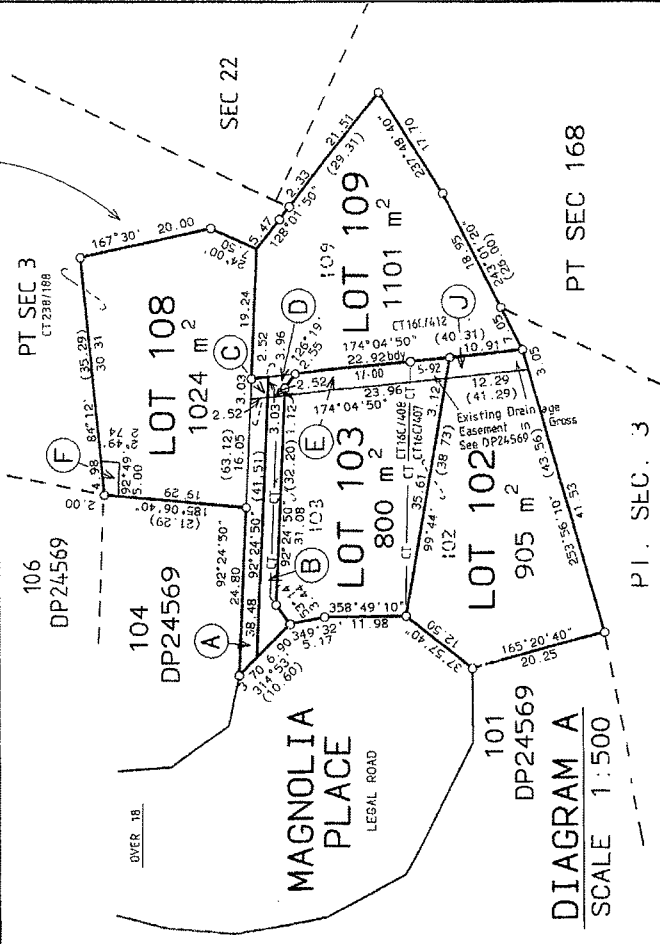


TERRITORIAL AUTHORITY QUEENSTOWN-LAKES DISTRICT
 Surveyed by LAMB AND ASSOCIATES 3857 RH
 Scale 1:1250 Date APRIL 1996

SHEET 1 OF 2



AREA TO BE DEDUCTED FROM CT238/188 = 1935 m²
 91 m² LOT 108, 735 m² LOT 130, 22 m² LOT 605, 241 m² LOT 716



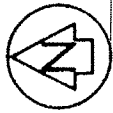
LOTS 102, 103, 108, 109, 130, 605 & 716 BEING A SUBDIVISION OF LOTS 102, 103 & 109 DP24569 & PT SEC'S 3, 6 & 168.

LAND DISTRICT OTAGO
 SURVEY BLK. & DIST. I. SHOTOVER
 NZMS 261 SHIT F.4.1 RECORD MAP No. 05.16.

W.A. ROBERTSON, SURVEYOR GENERAL, DEPARTMENT OF SURVEY AND LAND INFORMATION, NEW ZEALAND

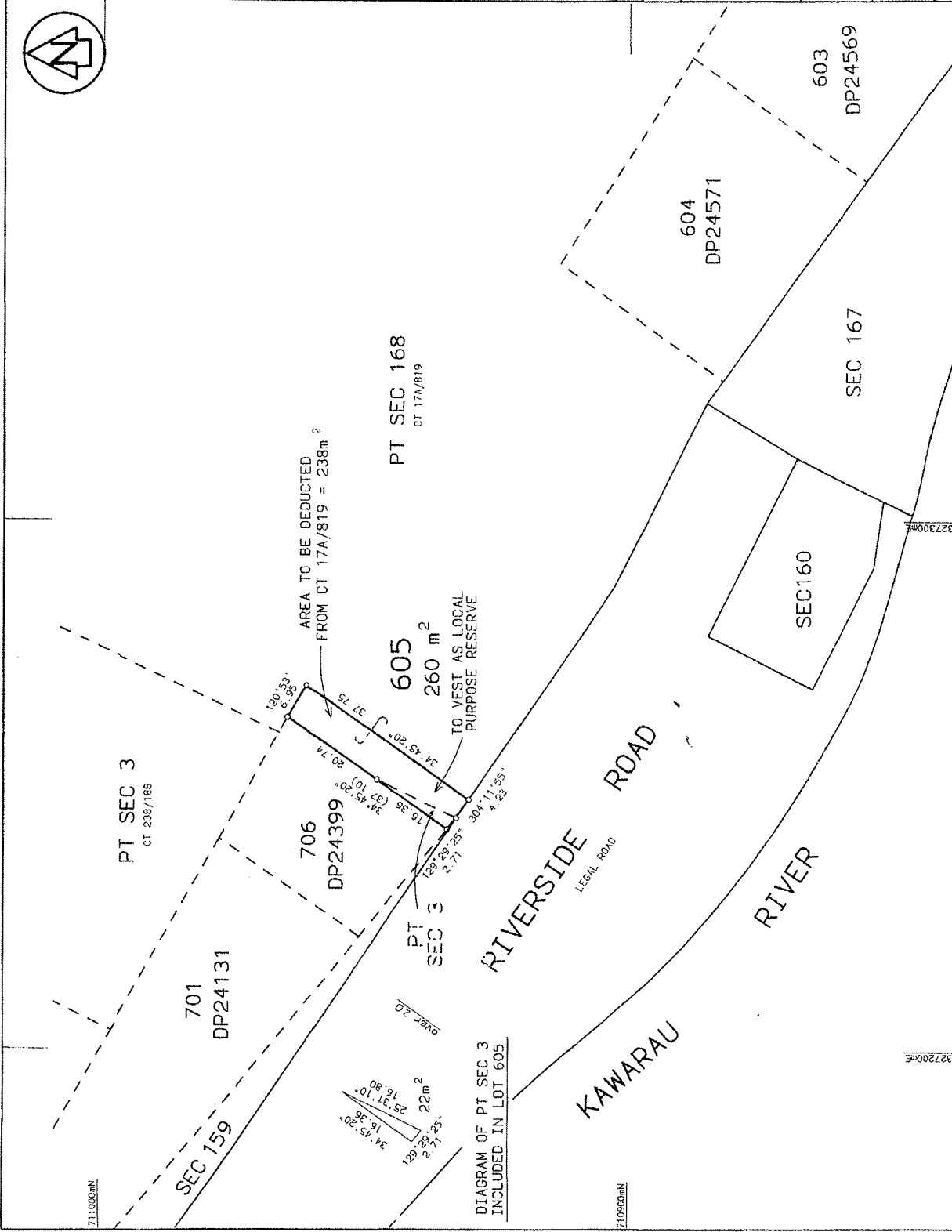
CPDF APPROVED LAM-BITS

Approvals



REFER TO SHEET 1 FOR APPROVALS

Total Area ... 5086 m ²
Comprised in CT 238/188 (PT 17A/819 PT) ... S.S.L. 18C/402 (A.L. 166 (608) A.L. 118 (A.R. (ALL) ...
I. MALCOLM GORDON LAMB Registered Surveyor and holder of an annual practicing certificate for who may act as a registered surveyor pursuant to section 2 of the Survey Act 1987. I hereby certify that this plan has been made from surveys conducted by me or under my directions. That both plan and surveys comply with the provisions of the Survey Act 1987 and the Regulations 1977 or any regulations made in substitution thereof. Dated at BROWNS BAY this 28 th day of of JULY 1996 Signature <i>M. Gordon</i>
Field Book ... p. Traverse Book ... p.
Reference Plans ... p. Correct
Examined <i>R. Lamb</i> Correct
Approved as to Survey 12.1.1996 Chief Surveyor <i>R. Lamb</i>
Deposited this 26 th day of August 1996 District Land Registrar <i>R. Lamb</i>
Received 1/7/95 DP 25645



TERRITORIAL AUTHORITY QUEENSTOWN LAKES DIST.
Surveyed by LAMB AND ASSOCIATES 3857 RH
Scale 1:500 Date APRIL 1996

LAND DISTRICT OTAGO
SURVEY BLK. & DIST. I. SHOTOVER
NZMS 261 SHT F.41 RECORD MAP No. 05.16.
& PT. SEC'S 3, 6 & 168.