

From: [Ben Gresson](#)
To: [Lynley Scott](#); [DP Hearings](#)
Cc: [Michelle van Kampen](#)
Subject: QLDC Inclusionary Housing - Metlifecare Limited - Information requested
Date: Thursday, 29 February 2024 8:41:14 AM
Attachments: [image001.png](#)
[image002.png](#)
[image003.png](#)

Hi Lynley,

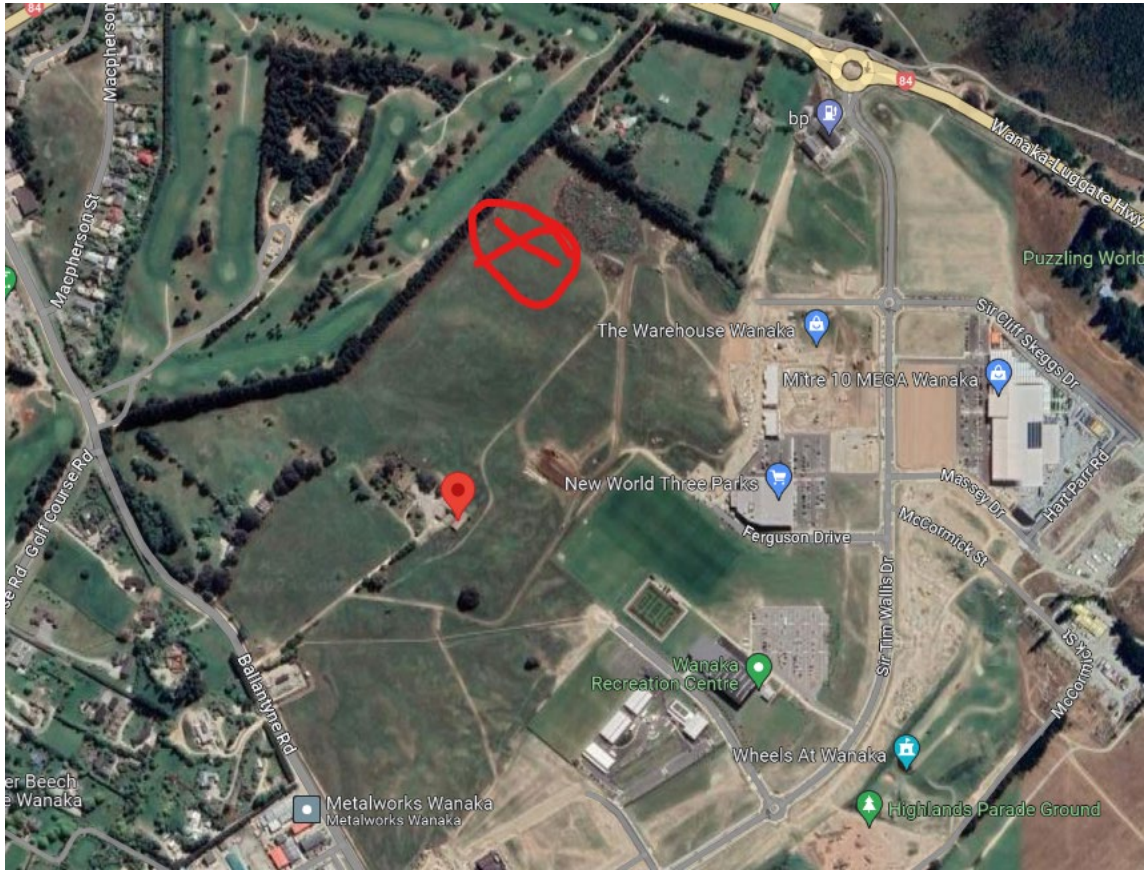
Further to the Panel's questions of Ms van Kampen yesterday and the further information requested:

Below is a list of retirement villages in the Queenstown Lakes District (with two in the Central Otago district) which are in a more affordable market than Metlifecare and its competitors:

- Ranui Court, Alexandra – [Ranui Court » Presbyterian Support Otago \(psotago.org.nz\)](#)
- Wanaka Retirement Village - [About Wanaka Retirement Village » Presbyterian Support Otago \(psotago.org.nz\)](#)
- Frankton Court, 32 McBride Street, Frankton ([Frankton Court Retirement Village - Queenstown - Retirement Villages to Purchase - retirementvillages.co.nz \(eldernet.co.nz\)](#)).
- Aurum on Clutha ([Aurum on Clutha - Clyde - Retirement Villages to Purchase - retirementvillages.co.nz \(eldernet.co.nz\)](#))

Here is also a photograph and a map showing the location of the proposed Metlifecare village in Wanaka (the New World being at the bottom of the image).





Ben Gresson

Associate

P: +64 3 441 2743 | M: +64 (0) 21 069 9209 | F: +64 3 441 2976

E: ben@toddandwalker.com

W: www.toddandwalker.com



CONFIDENTIALITY: The contents of this email (including any attachment) may be legally privileged and confidential. Any unauthorised use of the contents is prohibited. If you have received this email in error, please advise us immediately, and then delete this email together with all attachments.