

Attachment A - Additional parking restrictions applying to Queenstown Lakes District 14th

December 2020

Note: Designs are available for some restrictions at the end of this Attachment.

Arrowtown								
Road	Restriction	Suburb	Issue Description	Resolution	Side	Length	Start	End
Arrowtown-Lake Hayes Road	No Stopping at all times / Bus Stop	Arrowtown	Formalise bus stop outside Amisfield Winery. Change from unsigned hail & ride to bus stop.	NO STOPPING AT ALL TIMES except for buses	Left	45	145	190
Arrowtown-Lake Hayes Road	No Stopping at all times / Bus Stop	Arrowtown	Formalise bus stop opposite Amisfield Winery. Change from unsigned hail & ride to bus stop.	NO STOPPING AT ALL TIMES except for buses	Right	35	95	130
Berkshire Street	No Stopping at all times	Arrowtown	Vehicles mounting kerb and parking on grass.	NO STOPPING AT ALL TIMES (see Figure 2 and Figure 3)	Left	59	421	480
Buckingham Street	Loading Zone/ Permitted SPVS	Arrowtown	Taxi not being able to utilise loading zone after 6pm.	Change from LOADING ZONE 8am-10pm to LOADING ZONE 6am-6pm and Permitted Small Passenger Service Vehicle Stand 6pm-6am	Left	0	140	140
Helms Court	No Stopping at all times	Arrowtown	School pick vehicles parking in cul-de-sac and turning head becoming useable	NO STOPPING AT ALL TIMES (see Figure 4)	Left	3	100	108
Shaw Street (North)	No Stopping at all times	Arrowtown	Waste truck cannot turn around safely in cul-de-sac, vehicles obstructing accessways	NO STOPPING AT ALL TIMES (see Figure 5)	Left	4	20	24

Queenstown								
Road	Restriction	Suburb	Issue Description	Resolution	Side	Length	Start	End
Fernhill Rd	No Stopping at all times / Bus Stop	Fernhill	Formalise bus stop outside 201 Fernhill Rd. Enables disestablishment of existing informal stop at Lorden's Pl.	NO STOPPING AT ALL TIMES except for buses (see Figure 1)	Left	45	1625	1670
Mackinnon Terrace	No Stopping at all times	Fernhill	Narrow Road (7.4m)	NO STOPPING AT ALL TIMES (see figures 6 – 11)	Both	241	10	244
Matakauri Place	No Stopping at all times	Fernhill	Waste truck cannot turn around safely in Cul-de-sac	NO STOPPING AT ALL TIMES	Right	23	103	126
Andrews Road	No Stopping at all times	Queenstown	Blind crest on narrow road, install BYL to keep two-way traffic open	NO STOPPING AT ALL TIMES (see Figure 12)	Right	97	180	325
Caples Place	No Stopping at all times	Queenstown	Difficulty in using turning head while vehicles are parked	NO STOPPING AT ALL TIMES	Left	153	2	155
Frankton Road	No Stopping at all times	Queenstown	Vehicles blocking accessways	NO STOPPING AT ALL TIMES (see Figure 13)	Left	193	22	215
Isle Street	No Stopping at all times	Queenstown	Vehicles blocking accessways	NO STOPPING AT ALL TIMES	Left	4	301	305
Panorama Place	No Stopping at all times	Queenstown	Road being too narrow for rubbish collection to be completed, vehicles mounting kerb and parking on verge to allow for collection.	NO STOPPING AT ALL TIMES (see Figure 14)	Right	58	0	58
Peregrine Place	No Stopping at all times	Queenstown	Waste truck cannot turn around safely in Cul-de-sac	NO STOPPING AT ALL TIMES (see Figure 15)	Left	158	12	170
State Highway 6A (Shotover Street)	Loading Zone/ Permitted SPVS	Queenstown	Aotea Gift Shop converted what was some private parking spaces for Real Journeys into a storage area. Outside the shop are still the yellow lines that prevented people from parking in front of the private parking area.	LOADING ZONE 6am-6pm and Permitted Small Passenger Service Vehicle Stand 6pm-6am (see Figure 16 and Figure 17)	Left	15	6816	6831

Queenstown								
Road	Restriction	Suburb	Issue Description	Resolution	Side	Length	Start	End
Wilmot Avenue	No Stopping at all times	Queenstown	Narrow Road	NO STOPPING AT ALL TIMES	Both	114	8	122
Willow Place	No Stopping at all times	Queenstown	Narrow Road	NO STOPPING AT ALL TIMES	Right	536	8	544

Arthurs Point								
Road	Restriction	Suburb	Issue Description	Resolution	Side	Length	Start	End
Amber Close	No Stopping at all times	Arthurs Point	No stopping lines associated with cycling upgrade	NO STOPPING AT ALL TIMES	Both	23	0	23
Amber Close	No Stopping at all times	Arthurs Point	No stopping lines associated with cycling upgrade	NO STOPPING AT ALL TIMES	Both	40	124	165
Arthurs Point Road	No Stopping at all times	Arthurs Point	No stopping lines associated with cycling upgrade	NO STOPPING AT ALL TIMES	Right	115	1623	1736
Arthurs Point Road	No Stopping at all times	Arthurs Point	No stopping lines associated with cycling upgrade	NO STOPPING AT ALL TIMES	Right	43	1848	1889
Atley Road	No Stopping at all times	Arthurs Point	No stopping lines associated with cycling upgrade	NO STOPPING AT ALL TIMES	Right	34	366	399
Atley Road	No Stopping at all times	Arthurs Point	No stopping lines associated with cycling upgrade	NO STOPPING AT ALL TIMES	Right	72	456	534
Atley Road	No Stopping at all times	Arthurs Point	No stopping lines associated with cycling upgrade	NO STOPPING AT ALL TIMES	Left	441	95	534
Atley Road	No Stopping at all times	Arthurs Point	No stopping lines associated with cycling upgrade	NO STOPPING AT ALL TIMES	Right	78	93	172

Frankton								
Road	Restriction	Suburb	Issue Description	Resolution	Side	Length	Start	End
Elm Tree Avenue	No Stopping at all times	Frankton	emergency vehicles and rubbish trucks can't get through when cars are parked on both sides	NO STOPPING AT ALL TIMES (see Figure 18)	Right	200	6	206
Frankton Road Access way	No Stopping at all times	Frankton	Narrow Road	NO STOPPING AT ALL TIMES	Right	171	12	183
Grant Road	No Stopping at all times	Frankton	With cars parked on the side ,when driving down Grant Road you must cross the centre line into oncoming traffic	NO STOPPING AT ALL TIMES (see Figure 19)	Left	427	155	595
Remarkables Crescent	No Stopping at all times	Frankton	Vehicles parking on the corner and encroaching in the live lane	NO STOPPING AT ALL TIMES (see Figure 20)	Right	12	3	15
Riverside Road West	No Stopping at all times	Frankton	parking space is difficult to determine if it's for 1 or 2 vehicles	NO STOPPING AT ALL TIMES (see Figure 21)	Left	15	357	372
Robertson Street West	No Stopping at all times	Frankton	Narrow Road, vehicles blocking accessways	NO STOPPING AT ALL TIMES (see Figure 22 and Figure 23)	Both	182	9	191

Lake Hayes								
Road	Restriction	Suburb	Issue Description	Resolution	Side	Length	Start	End
Archeron Place	No Stopping at all times	Lake Hayes	Emergency vehicles and rubbish trucks can't get through when cars are parked on both sides	NO STOPPING AT ALL TIMES	Both	116	0	116
Erskine Street	No Stopping at all times	Lake Hayes	Narrow Road	NO STOPPING AT ALL TIMES (see figure 24 – 31)	Both	876	0	876

Lake Hayes								
Road	Restriction	Suburb	Issue Description	Resolution	Side	Length	Start	End
Longlands Street	No Stopping at all times	Lake Hayes	Vehicles blocking accessways	NO STOPPING AT ALL TIMES (see Figure 32)	Right	41	0	41
Lorne Street	No Stopping at all times	Lake Hayes	Narrow Road	NO STOPPING AT ALL TIMES (see Figure 33)	Right	152	8	160
Widgeon Place	No Stopping at all times	Lake Hayes	emergency vehicles and rubbish trucks can't get through when cars are parked on both sides	NO STOPPING AT ALL TIMES (see Figure 34)	Left	8	275	283

Wanaka urban/ Late addition to report as requested at WCB meeting 03/12/2020								
Road	Restriction	Suburb	Issue Description	Resolution	Side	Length	Start	End
Dunmore Street	P10 – all vehicles	Wanaka	Short term parking to accommodate for post office being relocated into paper plus	Remove unused bus stop and install 4x parking spaces, designated by hockey stick. Install P10 signage either end max 10 min stay.	Left	22	146	168

Figure 1: Fernhill Road: No Stopping at all times / Bus Stop



Figure 2: Berkshire Street: No stopping at all times

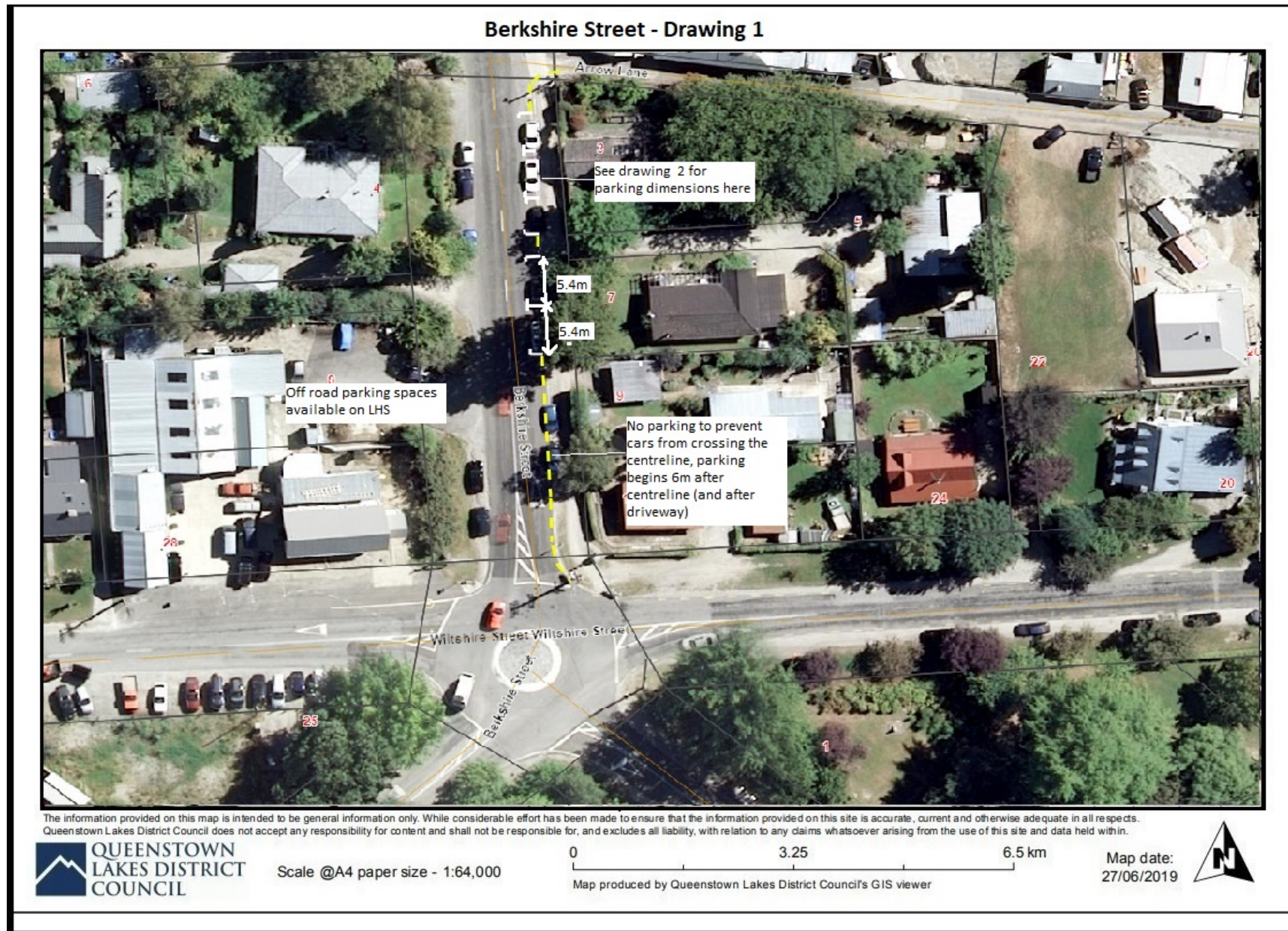


Figure 3: Berkshire Street: No stopping at all times

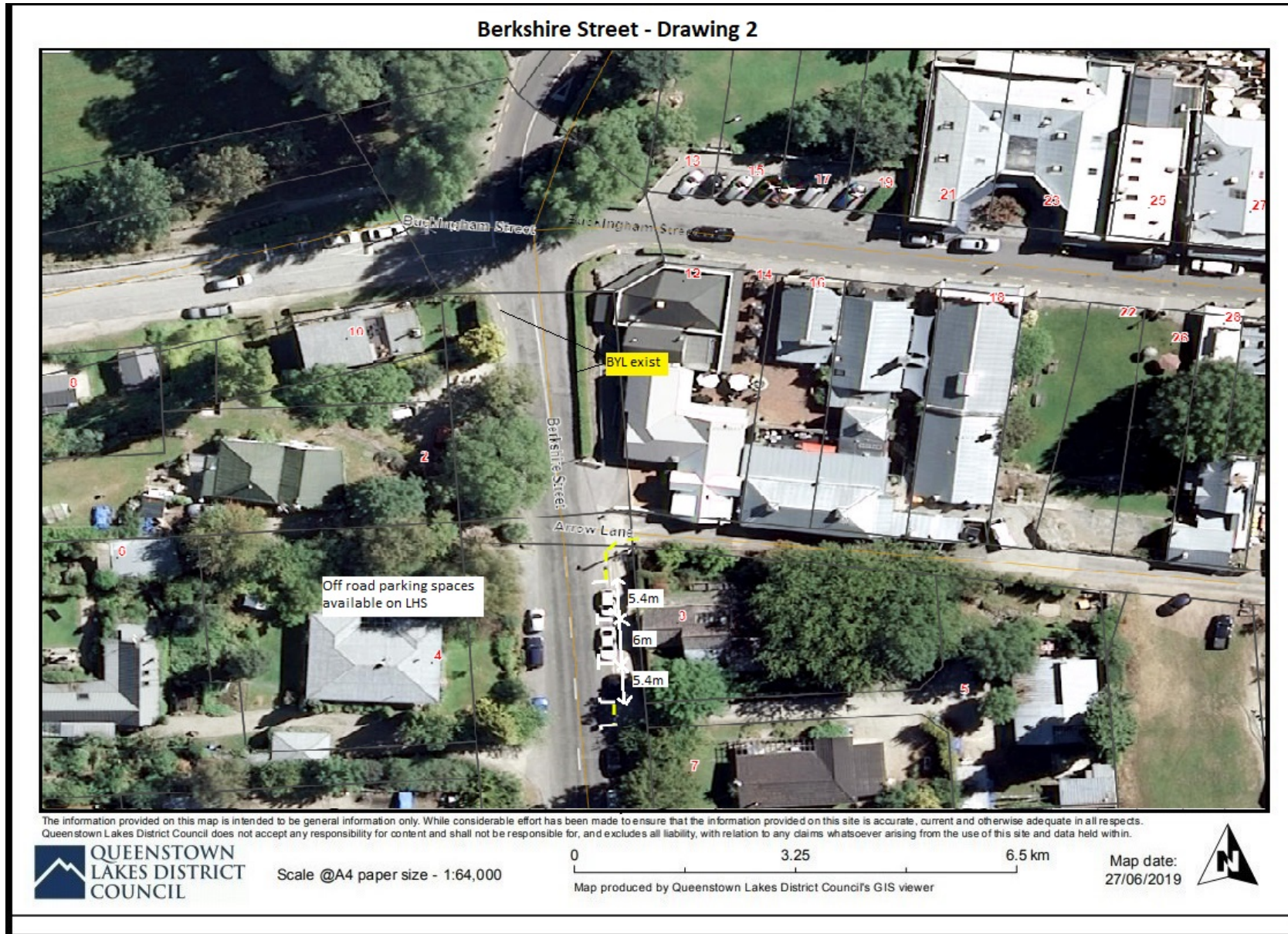


Figure 4: Helms Court: No stopping at all times



Figure 5: Shaw Street: No stopping at all times



Figure 6: Mackinnon Terrace: No stopping at all times

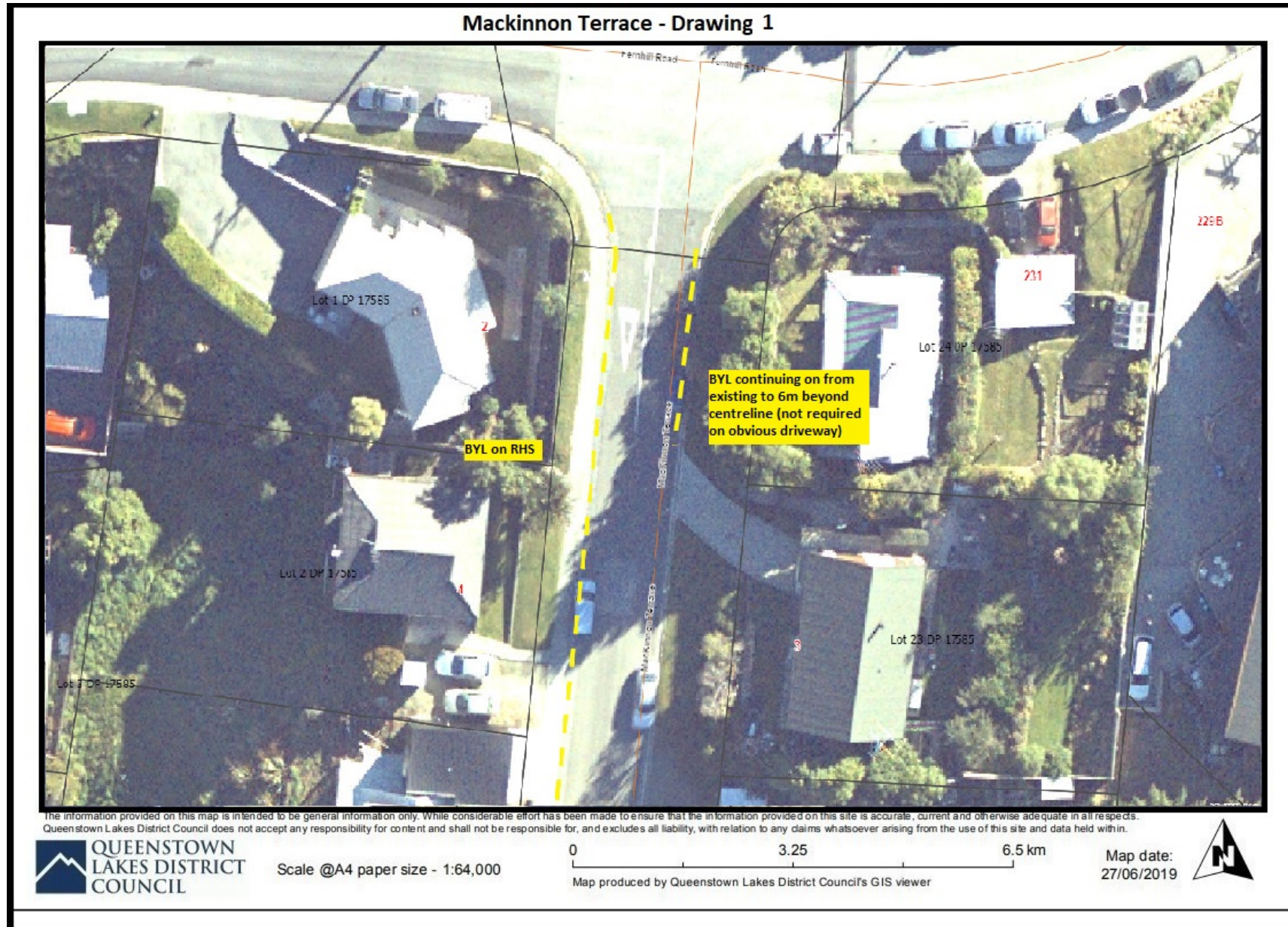


Figure 7: Mackinnon Terrace: No stopping at all times



Figure 8: Mackinnon Terrace: No stopping at all times



Figure 9: Mackinnon Terrace: No stopping at all times

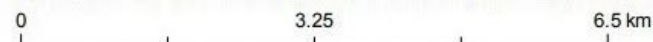
Mackinnon Terrace - Drawing 4



The information provided on this map is intended to be general information only. While considerable effort has been made to ensure that the information provided on this site is accurate, current and otherwise adequate in all respects. Queenstown Lakes District Council does not accept any responsibility for content and shall not be responsible for, and excludes all liability, with relation to any claims whatsoever arising from the use of this site and data held within.



Scale @A4 paper size - 1:64,000



Map produced by Queenstown Lakes District Council's GIS viewer

Map date:
27/06/2019



Figure 10: Mackinnon Terrace: No stopping at all times

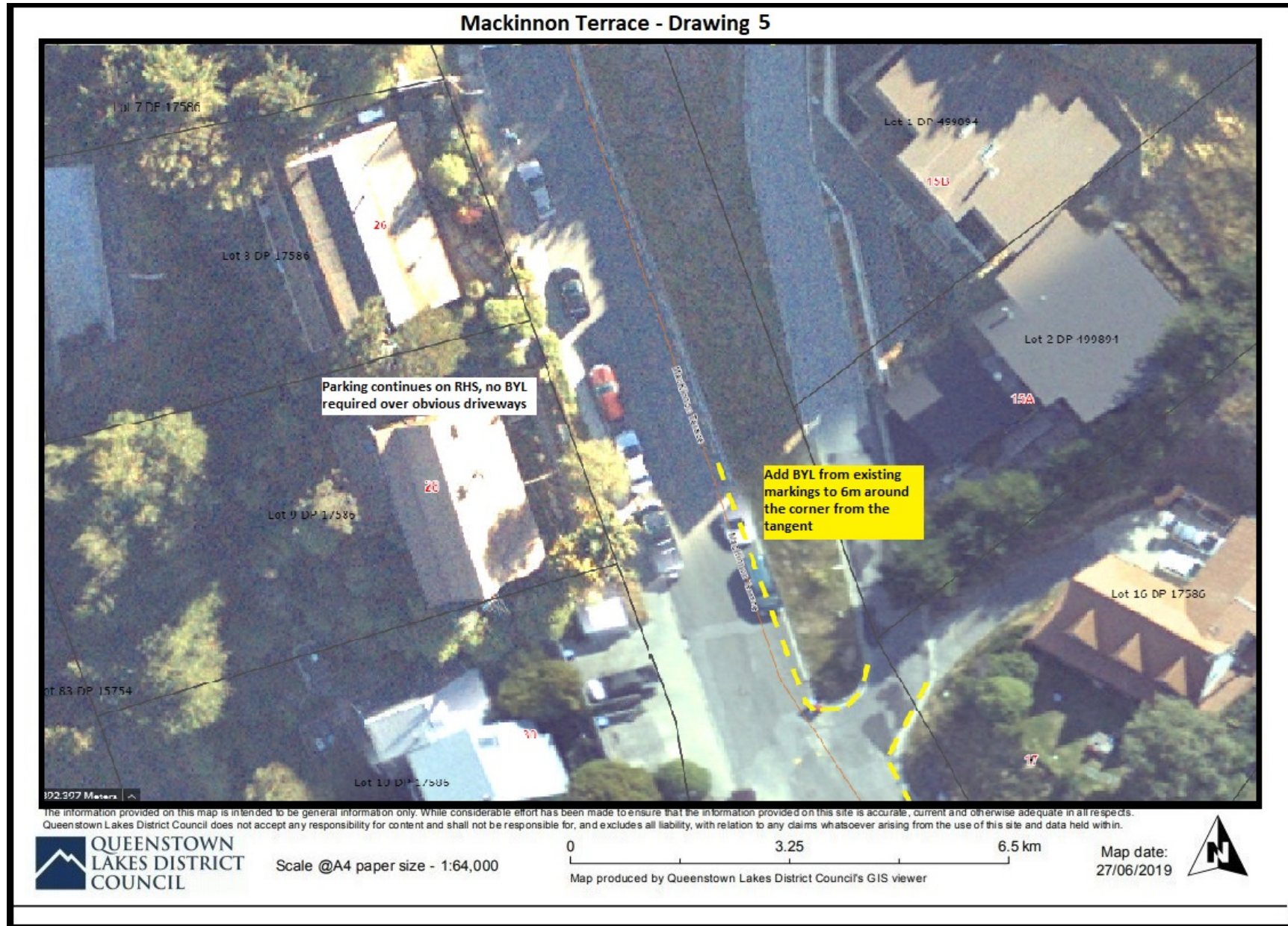


Figure 11: Mackinnon Terrace: No stopping at all times



Figure 12: Andrews Road: No stopping at all times



Figure 13: Frankton Road: No stopping at all times

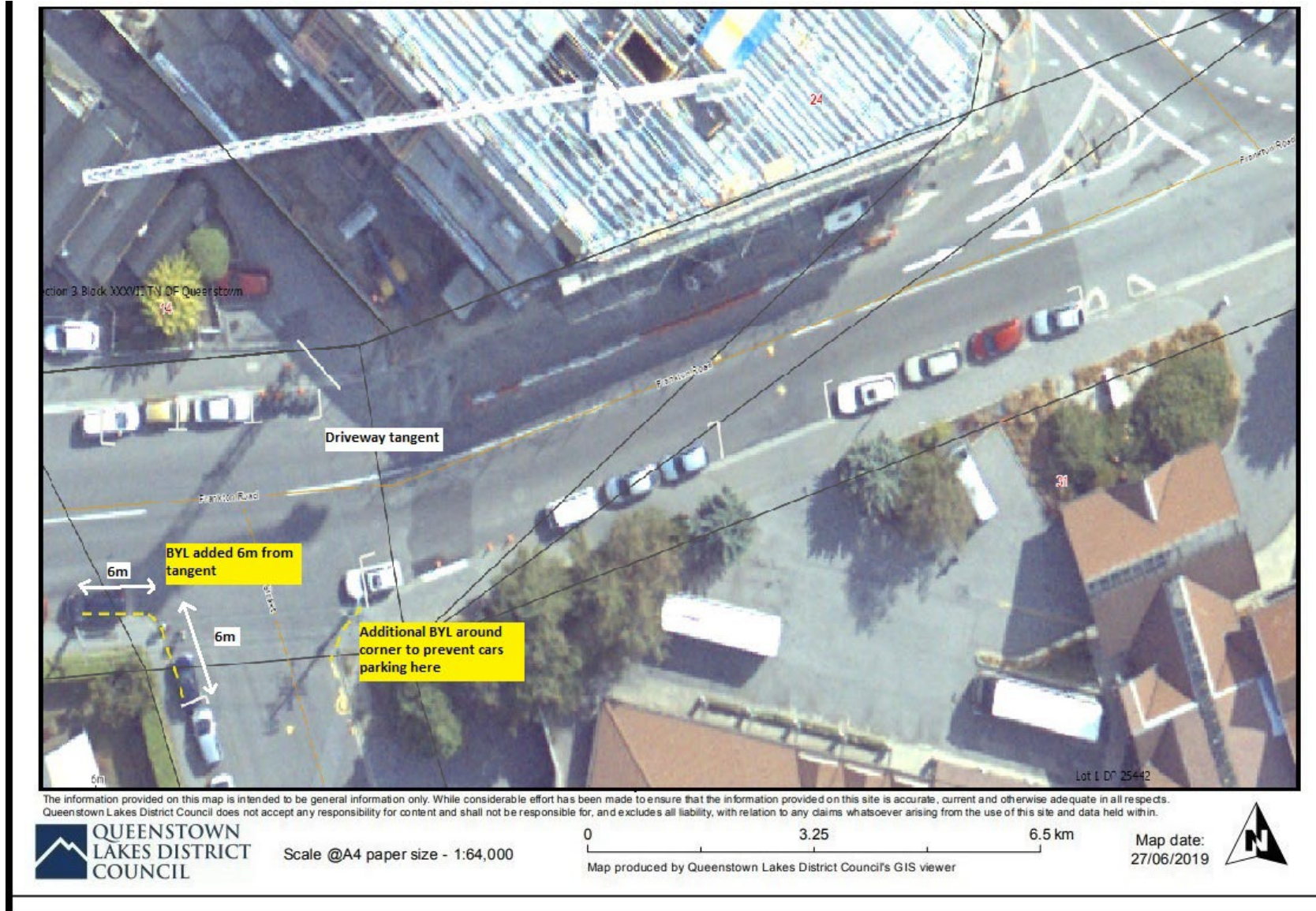


Figure 14: Panorama Place: No stopping at all times



Figure 15: Peregrine Place: No stopping at all times



Figure 16: State Highway 6A (Shotover Street): Loading Zone/Permitted Small Passenger Service Vehicles



Figure 17: State Highway 6A (Shotover Street): Loading Zone/Permitted Small Passenger Service Vehicles

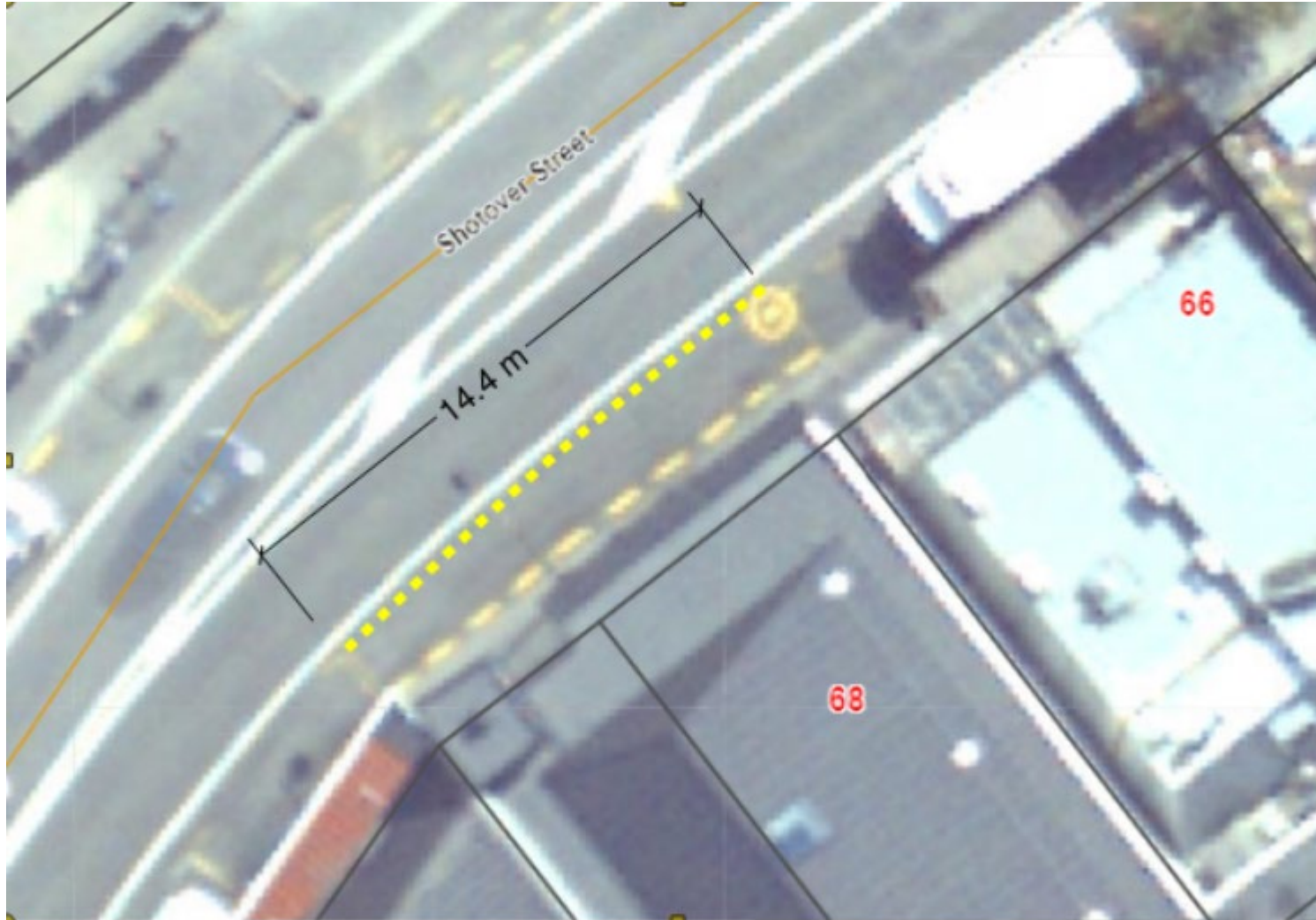


Figure 18: Elm Tree Avenue: No stopping at all times



Figure 19: Grant Road: No stopping at all times



Figure 20: Remarkables Crescent: No stopping at all times



Figure 21: Riverside Road: No stopping at all times



Figure 22: Robertson Street West: No stopping at all times

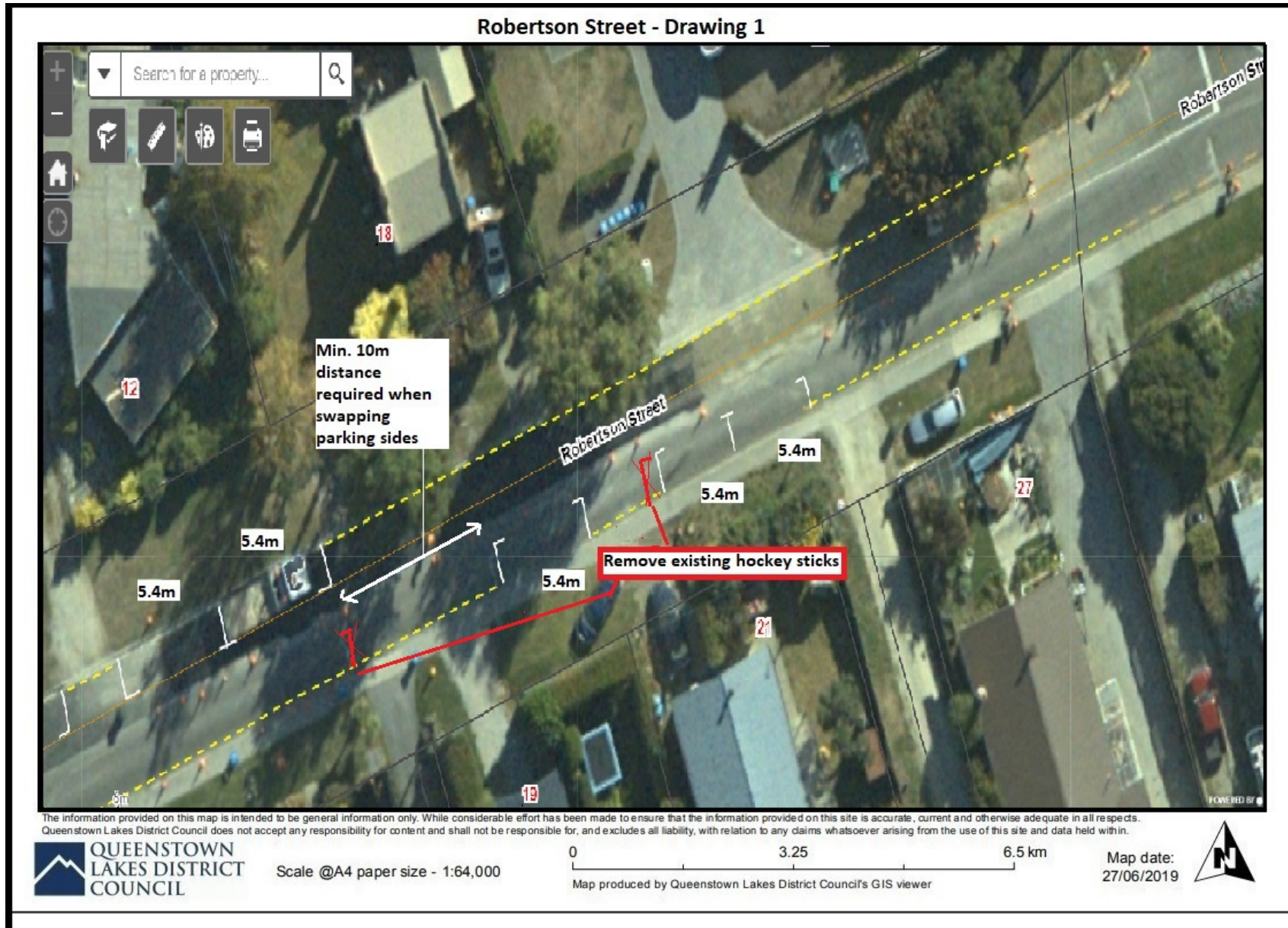


Figure 23: Robertson Street West: No stopping at all times

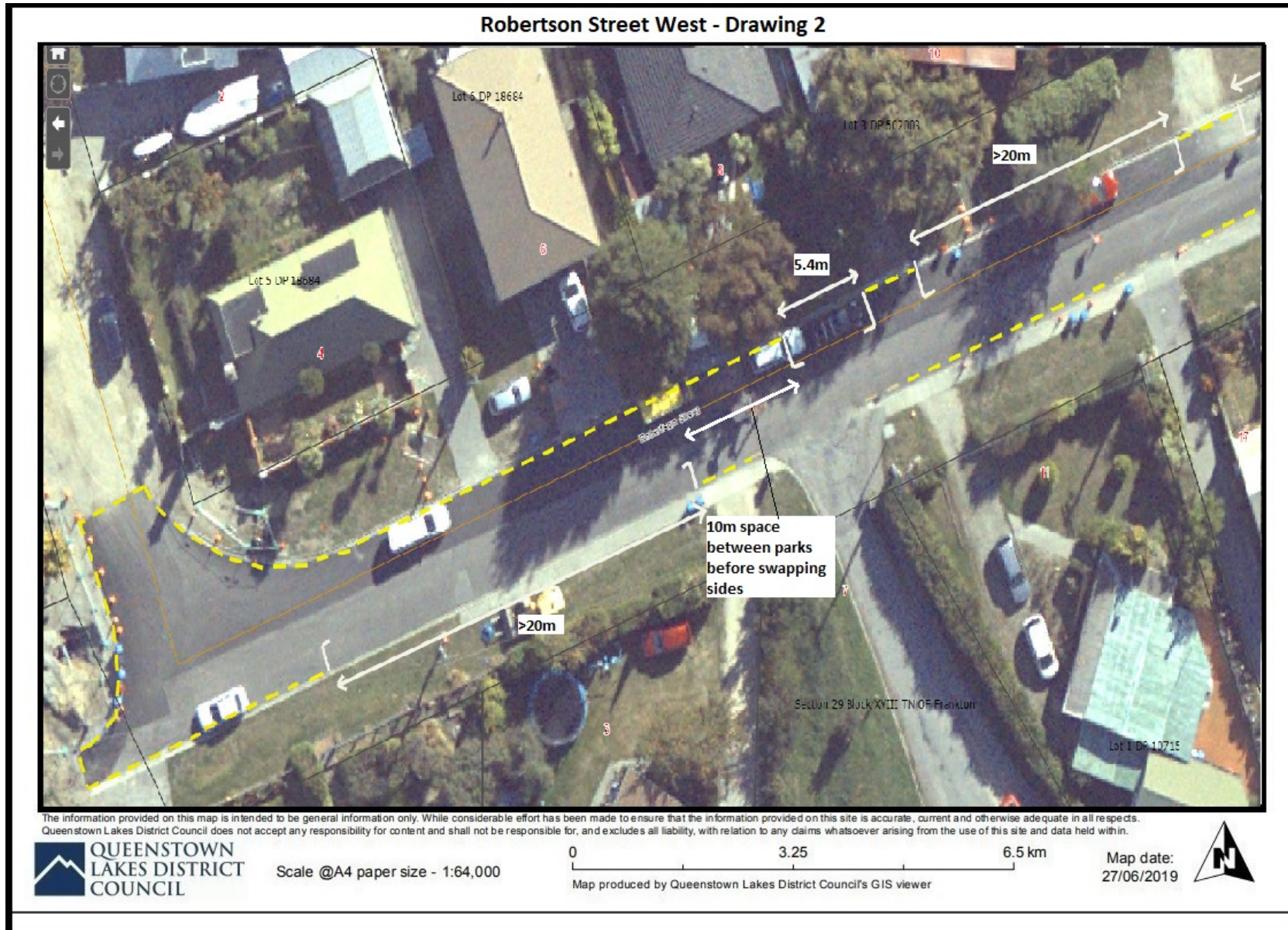


Figure 24: Erskine Road: No stopping at all times

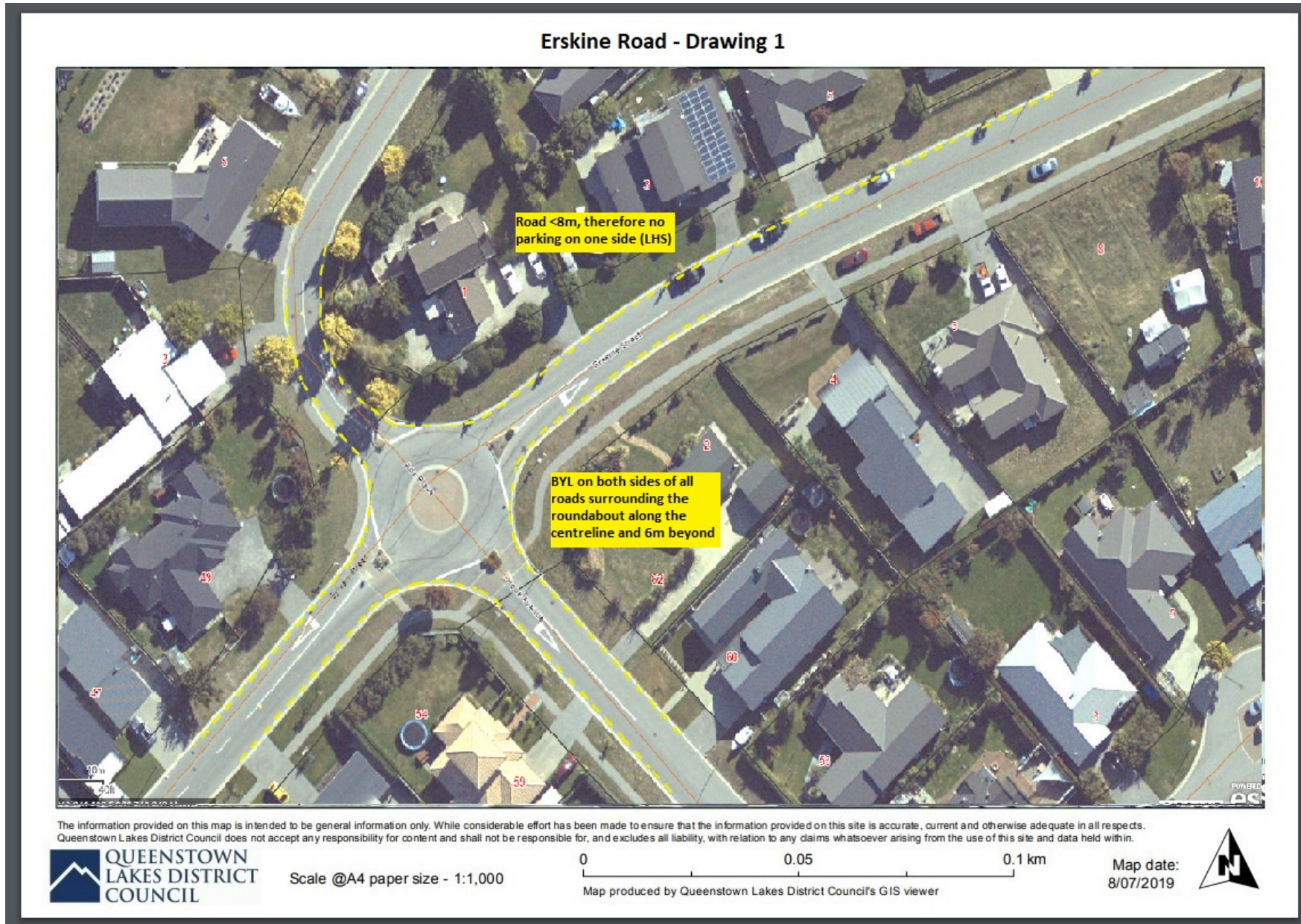


Figure 25: Erskine Road: No stopping at all times

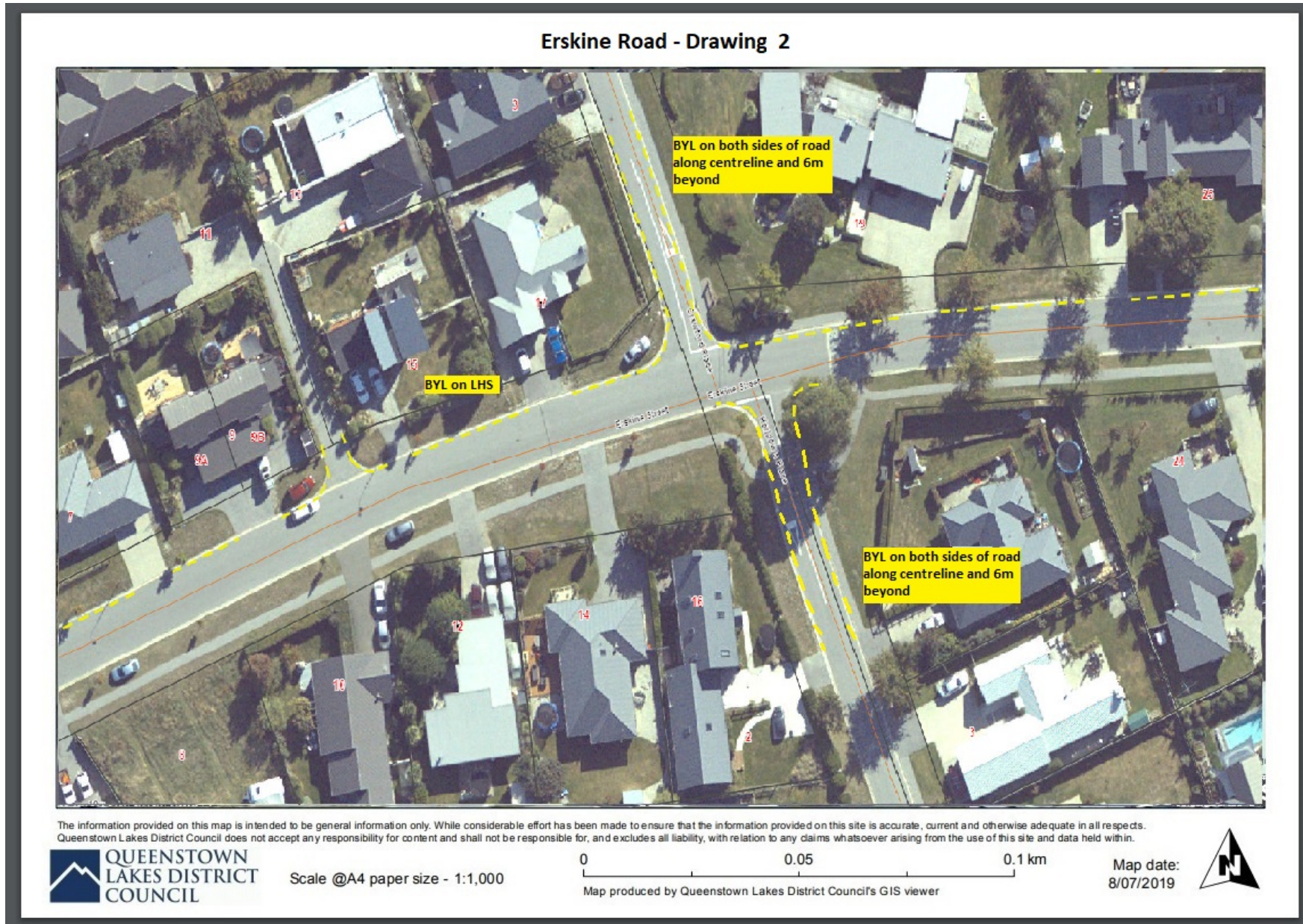


Figure 26: Erskine Road: No stopping at all times

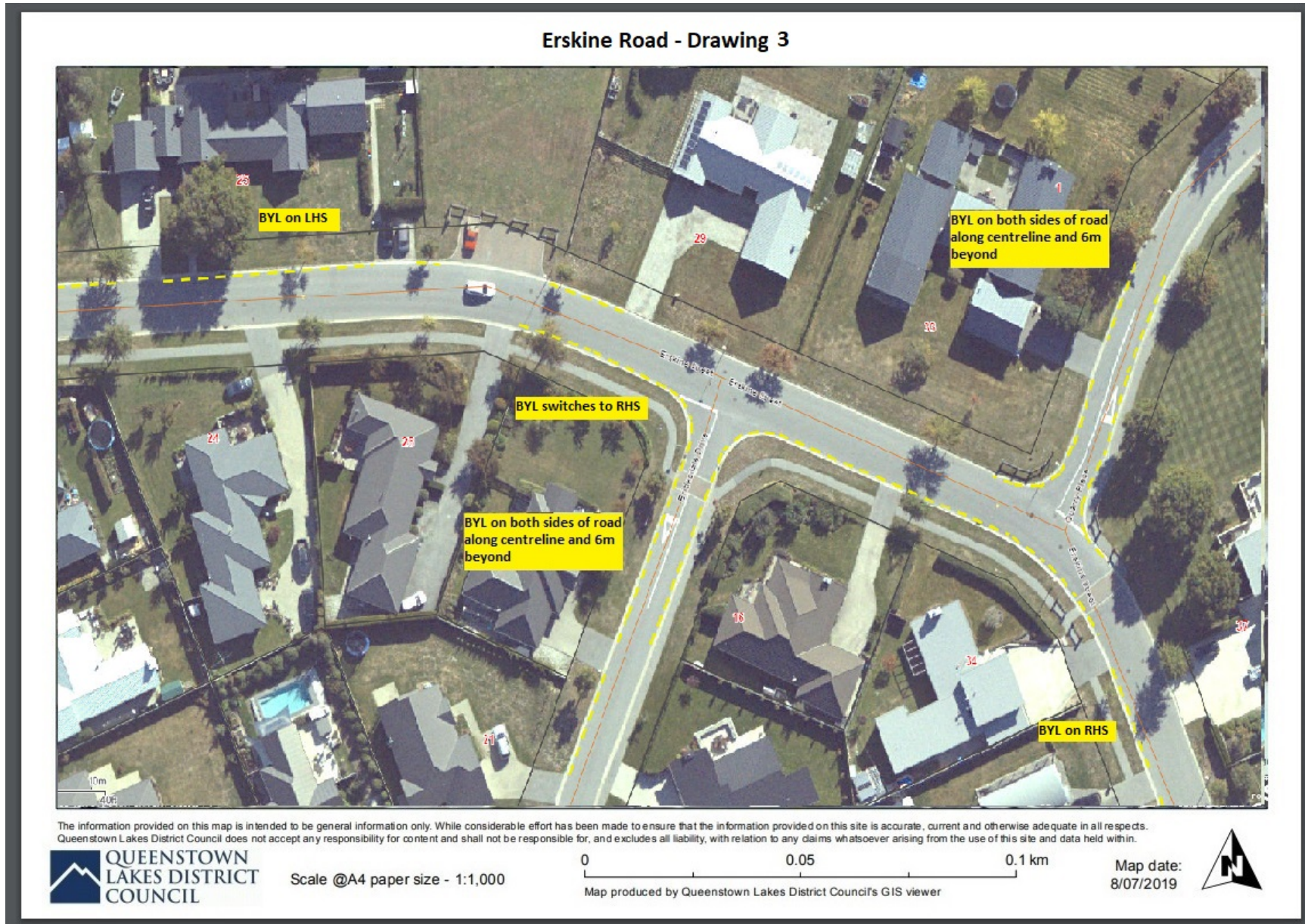


Figure 27: Erskine Road: No stopping at all times

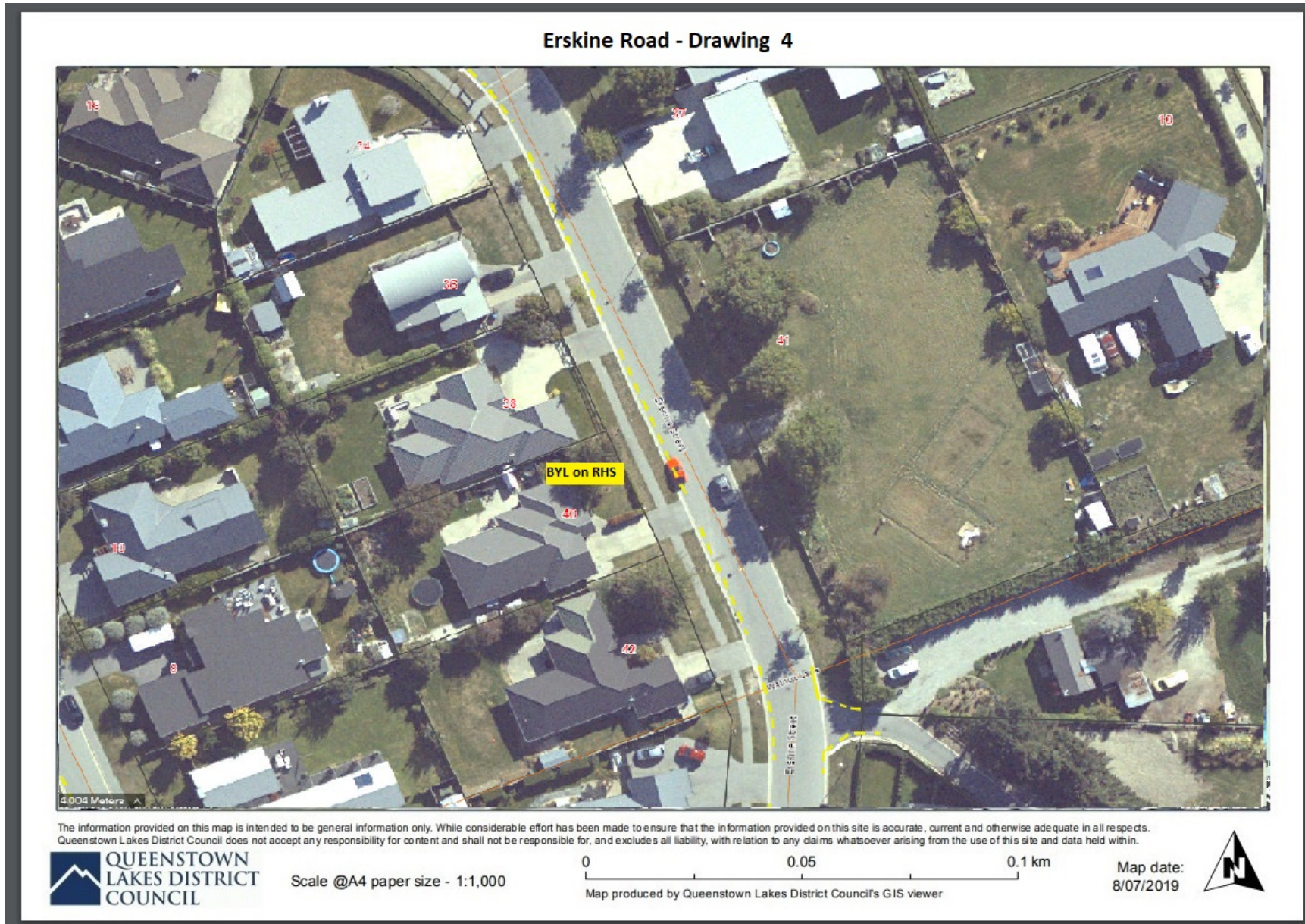


Figure 28: Erskine Road: No stopping at all times

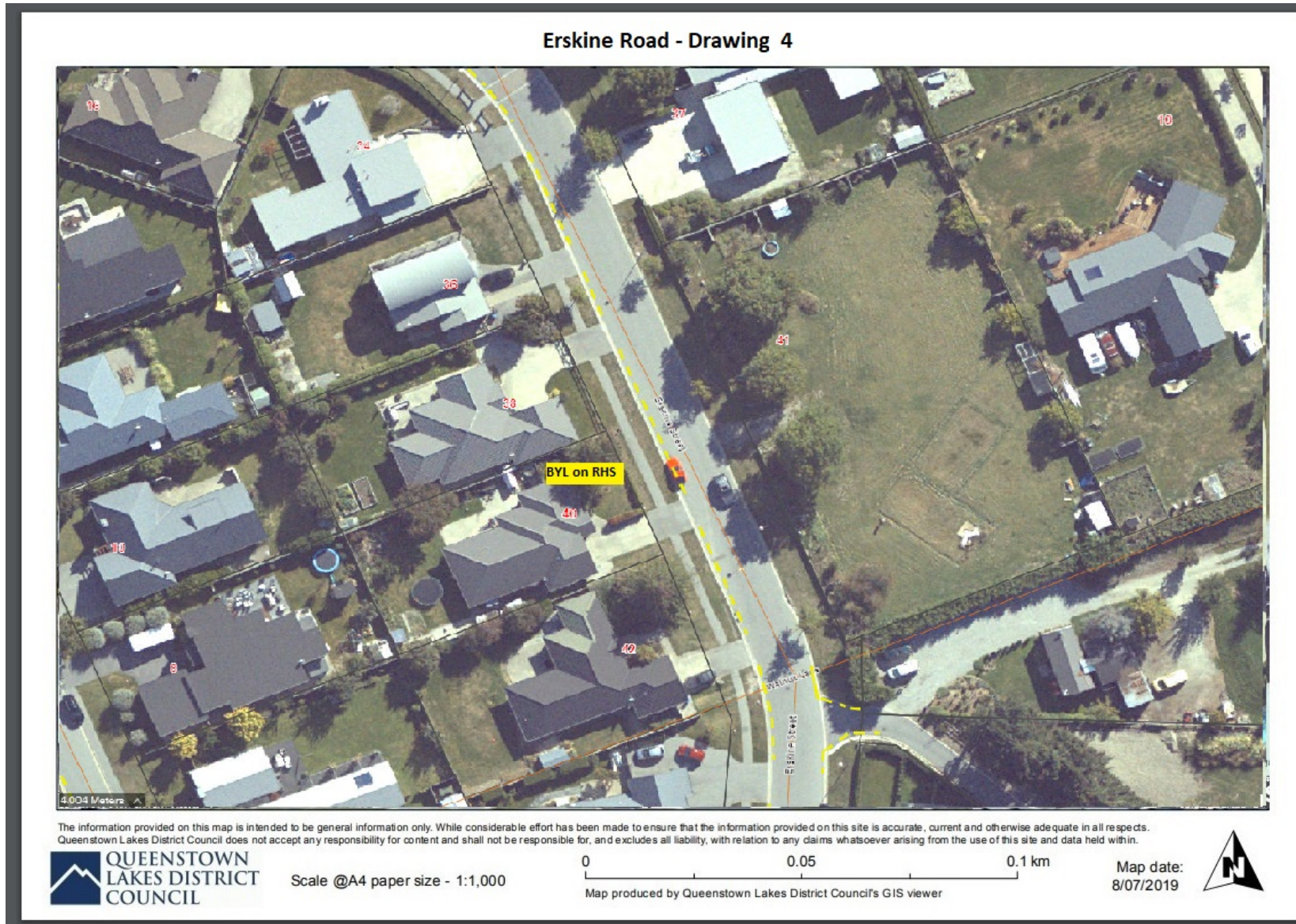


Figure 29: Erskine Road: No stopping at all times

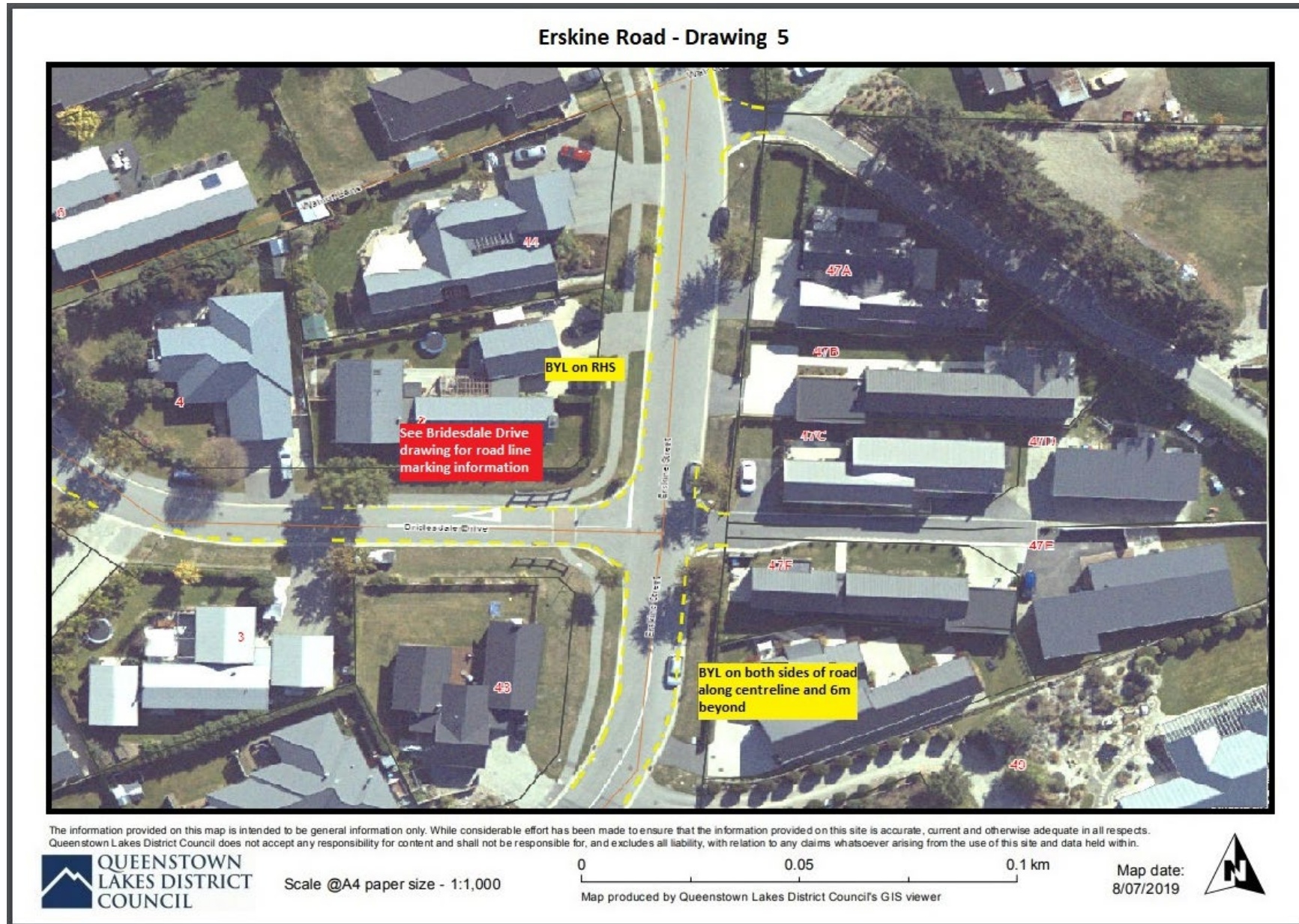


Figure 30: Erskine Road: No stopping at all times



Figure 31: Erskine Road: No stopping at all times

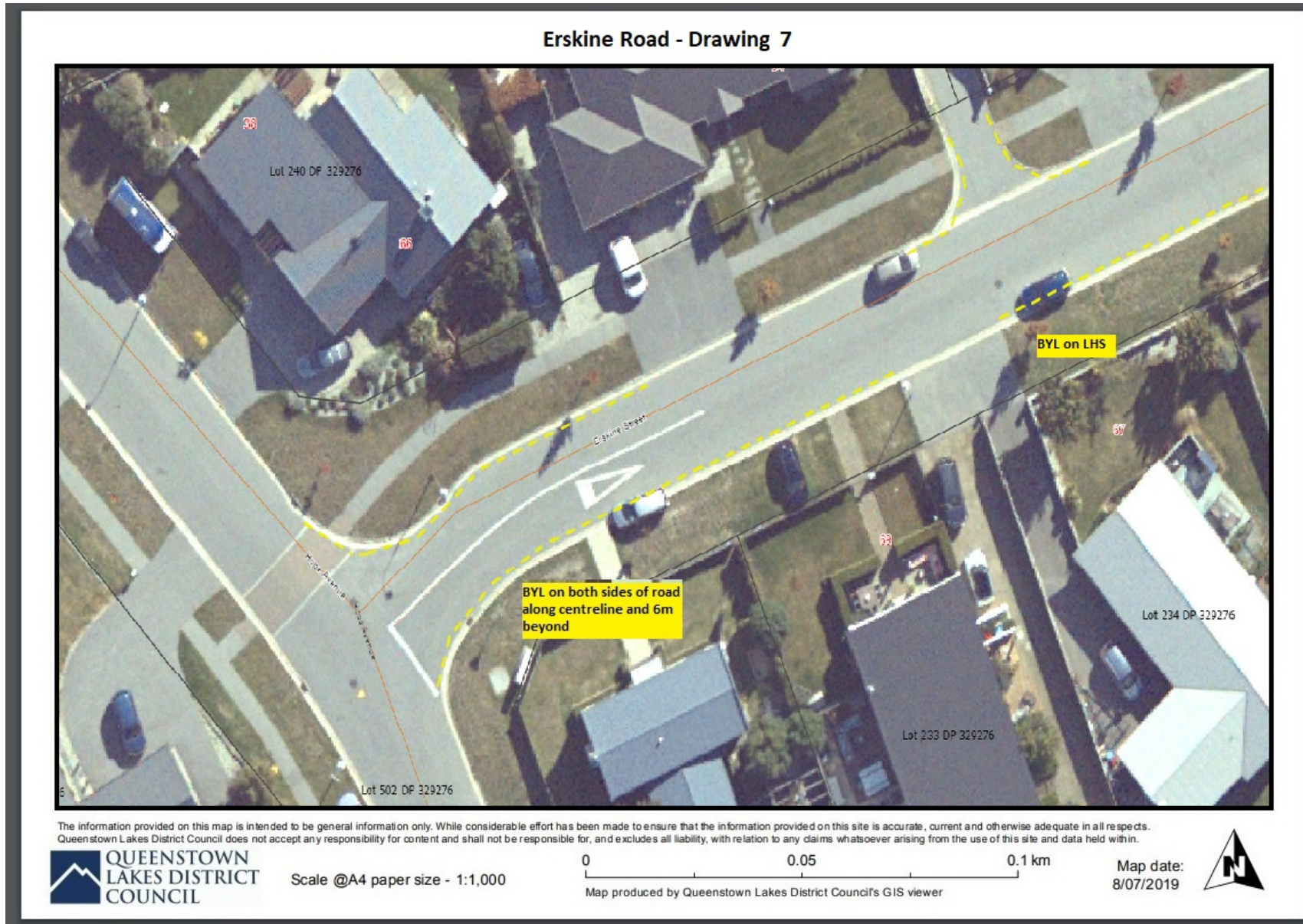


Figure 32: Longlands Street: No stopping at all times

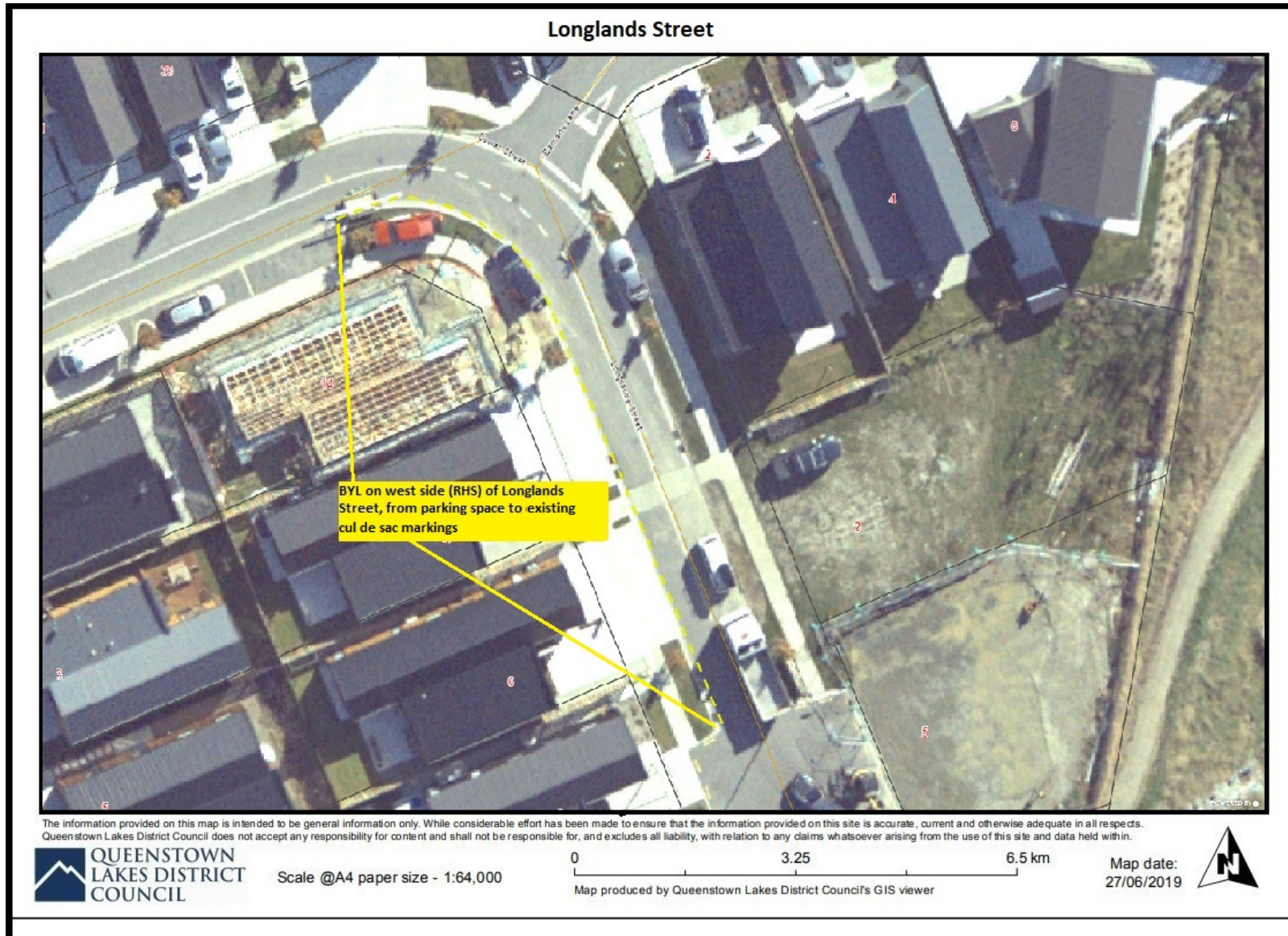


Figure 33: Lorne Street: No stopping at all times



Figure 34: Widgeon Place: No stopping at all times



Item requested at WCB meeting 03/12/2020 for approval.

Figure 35: Dunmore Street: 4x parking bays with P10 restrictions.

