

Attachment Five – Recommended amendments to correct river mapping anomalies

Map 5.1



Wāhi Tūpuna	#11 Ōrau
Location	Longitude 169.174 Latitude -44.701 (Riverbank Rd, near Wanaka-Luggate Highway crossing)
Adjacent tenure	Both sides - Crown marginal strip then private fee simple (except for break in marginal strip provision on north side near SH6)
Recommendations	<ol style="list-style-type: none"> <li data-bbox="459 1621 1353 1686">1. Extend mapping on east side within hydro parcel to fix gap in mapping of river <li data-bbox="459 1693 1353 1765">2. Reduce mapping on west side of river to fix uneven buffering, as per red lines

Map 5.2



Wāhi Tūpuna	#11 Ōrau
Location	Longitude 169.145 Latitude -44.733 (near intersection Riverbank & Cardrona Valley Rds)
Adjacent tenure	Private fee simple east of hydro parcel. To west of hydro parcel, Crown marginal strip then private fee simple.
Recommendations	<ol style="list-style-type: none"> 1. Remove hole in mapping of river as per red cross 2. Reduce mapping to remove bulge to west as per red line 3. Remove kink to east to better capture river as per red line – extension of mapping to boundary of hydro parcel

Map 5.3



Wāhi Tūpuna	#11 Ōrau
Location	Longitude 169.046 Latitude -44.849
Adjacent tenure	Crown marginal strip then private fee simple.
Recommendations	1. Extend mapping to boundary of Crown marginal strip to capture missing awa as per red line

Map 5.4



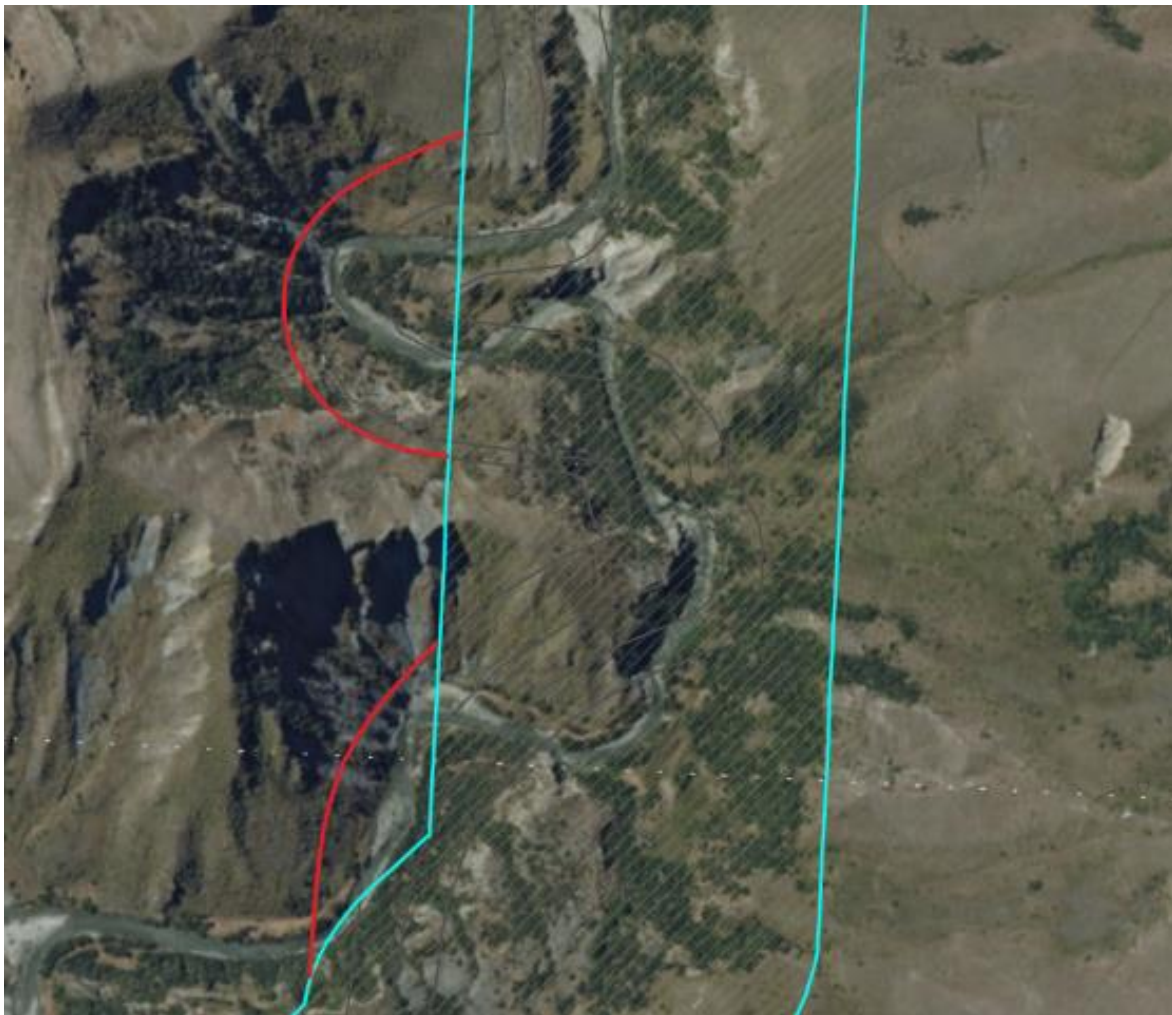
Wāhi Tūpuna	#24 Kawarau
Location	Confluence of Kawarau & Nevis Rivers
Adjacent tenure	True right side of Kawarau – road reserve then private fee simple
Recommendations	<p>1. Remove odd kink in mapping as per red line</p> <p>Note that from Kawarau/Nevis confluence downstream, the wāhi tūpuna is cropped to QLDC boundary so doesn't fully map some extents of the Kawarau</p>

Map 5.5



Wāhi Tūpuna	#28 Haehaenui (Arrow River)
Location	Longitude 168.819 Latitude -44.863 (Macetown)
Adjacent tenure	East side (of missing extent) - Crown marginal strip then private fee simple West side (of missing extent) – Crown marginal strip then Department of Conservation (mining reserve)
Recommendations	<p>1. Correct erroneous mapping of extent of Rich Burn (rather than Arrow) by mapping to east side of Arrow to match boundary of Crown marginal strip, and to west side of Arrow (within mining reserve) as per red lines above.</p> <p>Note a further extent of erroneous mapping immediately to north (at top of image, location: 168.818, -44.858), where wāhi tūpuna leaves the river (follows hydro parcel mapping, which is also erroneous). It is not anticipated that this can be corrected, as this extent of river entirely within private land.</p>

Map 5.6



Wāhi Tūpuna	#28 Haehaenui (Arrow River)
Location	Longitude 168.820 Latitude -44.855 (north of Macetown)
Adjacent tenure	Crown marginal strip then private land
Recommendations	1. Extend wāhi tūpuna mapping to west to follow Crown marginal strips as per red lines, to correct erroneous mapping of Arrow.

Map 5.7



Wāhi Tūpuna	#29 Kimiākau (Shotover River)
Location	Confluence of Kimiākau & Shotover
Adjacent tenure	Gap in mapping of river to north west – conservation land, then Council designation for sewage treatment Gap in mapping (between Kawarau & Shotover wāhi tūpuna, indicated by red cross) – tenure is hydro parcel; road reserve; QLDC unvalued (eroded land)
Recommendations	<ol style="list-style-type: none"> 1. Including missing portion of river to northwest (near sewage works) as per red line 2. Include gap at confluence denoted by red cross into #29 Kimiākau, remap confluence end of Kimiākau as per red line to include missing extent of river (to edge of Crown marginal strip) and remove mapping of Kimiākau extending onto southern bank of Kawarau <p>Note odd-shaped mapping kink at top centre of image caused by removal of wāhi tūpuna mapping over Volume B land (Shotover Country Special Zone)</p>

Map 5.8



Wāhi Tūpuna	#29 Kimiākau (Shotover River)
Location	Tucker Beach
Adjacent tenure	Some Crown marginal strip provision, some Department of Conservation land, private land
Recommendations	1. Correct missing mapping of river as per red lines in image, drawn within Crown marginal strip or Department of Conservation land

Map 5.9



Wāhi Tūpuna	#29 Kimiākau (Shotover River)
Location	The Branches Station vicinity (longitude 168.732 latitude -44.764 to longitude 168.714 latitude -44.703)
Adjacent tenure	Crown marginal strip, then private land
Recommendations	<ol style="list-style-type: none"> 1. Fill in holes in wāhi tūpuna mapping within river 2. A number of stretches where wāhi tūpuna mapping does not take in full extent of river – map to boundary of Crown marginal strip

Map 5.10



Wāhi Tūpuna	#29 Kimiākau (Shotover River)
Location	Longitude 168.645 latitude -44.659 (North of Sixteen Mile Creek confluence)
Adjacent tenure	Crown marginal strip, then private land
Recommendations	1. Correct missing mapping of river to edge of Crown marginal strip, as per red line

Map 5.11



Wāhi Tūpuna	#29 Kimiākau (Shotover River)
Location	Longitude 168.645 latitude -44.649 (Seventeen Mile Creek confluence)
Adjacent tenure	Crown marginal strip, then private land
Recommendations	1. Correct missing mapping of river to boundary of Crown marginal strip, as per red line

Map 5.12



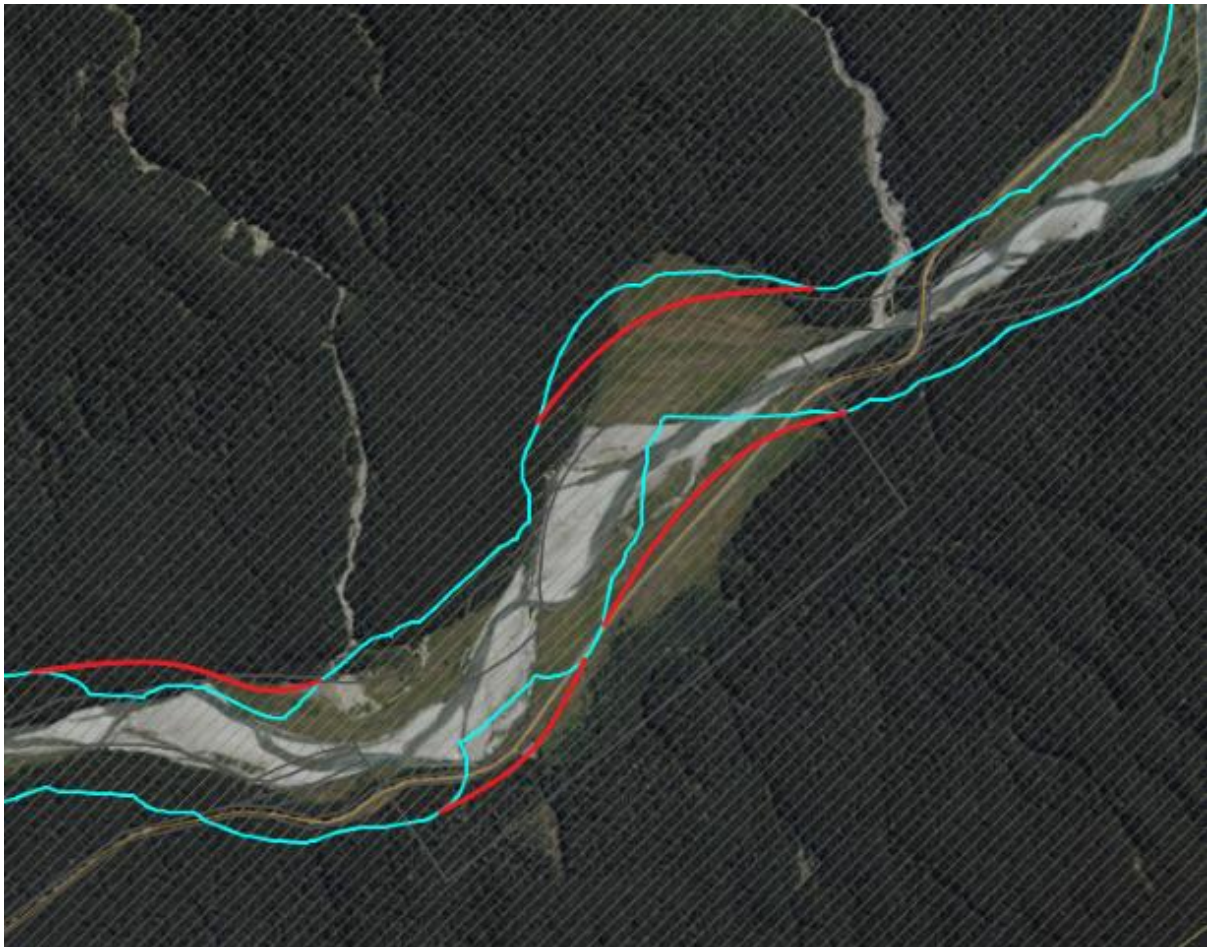
Wāhi Tūpuna	#30 Makarore River
Location	Longitude 169.453 Latitude -44.117
Adjacent tenure	Conservation estate – Mt Aspiring National Park
Recommendations	1. Extend mapping as per red line to fix gap in mapping of river

Map 5.13



Wāhi Tūpuna	#30 Makarore River
Location	Longitude 169.425 Latitude -44.133
Adjacent tenure	Conservation estate – Mt Aspiring National Park
Recommendations	1. Extend mapping as per red line to fix gap in mapping of river

Map 5.14



Wāhi Tūpuna	#30 Makarore River
Location	Longitude 169.323 Latitude -44.142 (Kiwi Flat, northeast of Cameron Flat)
Adjacent tenure	Conservation estate – Mt Aspiring National Park
Recommendations	<ol style="list-style-type: none"> 1. Extend mapping as per red line to fix gaps in mapping of river 2. Reduction in mapping on north side of river to fix uneven buffering, as per red line

Map 5.15



Wāhi Tūpuna	#32 Mata-Au
Location	Lake Wānaka Outlet
Adjacent tenure	Recreation reserve
Recommendations	<ol style="list-style-type: none"> 1. Correct erroneous gap in mapping of wāhi tūpuna as per red lines. 2. As an alternate (if new mapping on recreation reserve rejected, map to hydro parcel boundaries)

Map 5.16



Wāhi Tūpuna	#32 Mata-Au
Location	Albert Town
Adjacent tenure	Adjacent land - true left: Recreation reserve up to Hāwea confluence. Adjacent land – true right: Crown marginal strip/conservation land (to Gunn Road), road reserve & private land (Gunn Road to Hāwea confluence).
Recommendations	1. Correct erroneous gap in mapping of river as per red line.